

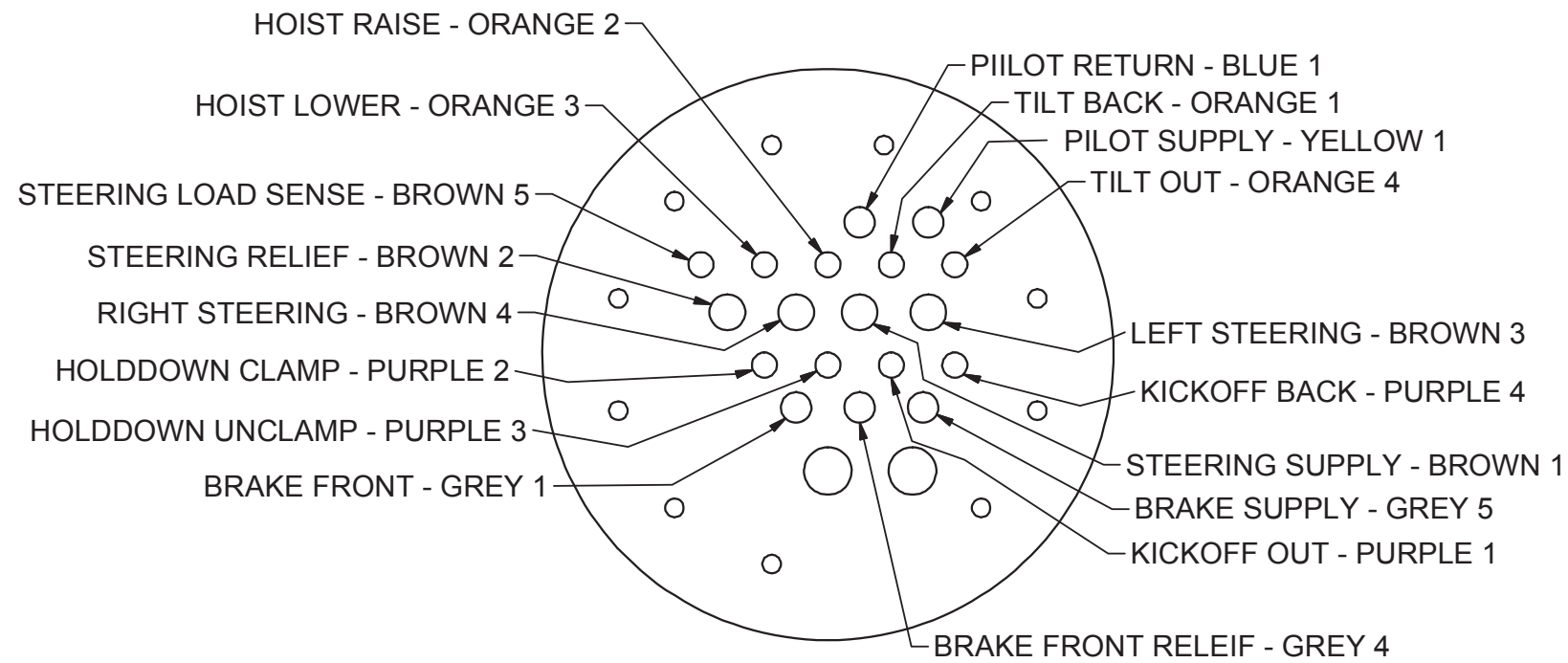
---

Assembly, Seat

## Assembly, Seat

Item	Part No.	Qty	Description	Item	Part No.	Qty	Description
	<b>594266</b>		<b>Assembly, Seat</b>				
1.1	* 595604	1	. Seat	1.34	589094	2	. Shim
1.2	586704	1	. Platform Weldment	1.35	230838	2	. Connector, Cord
1.3	00103339	6	. Flat Washer	1.36	230764	2	. Ring Nut
1.4	579412	1	. Angle	1.37	244506	1	. Steering Wheel
1.5	221767W	30	. Hard Washer	1.38	591654	1LB	. Grease
1.6	586724	3	. Plate, Cover	1.39	R1933720	2	. Plug, Button
1.7	221771W	6	. Washer	1.40	* 586716	1	. Steering Column
1.8	R13811191	10	. Locknut	1.41	588902	1	. Steering Column
1.9	Y25G-0408	18	. Capscrew	1.42	587189	1	. Cover Plate
1.10	Y17C-0616	3	. Capscrew	1.43	* 586692	1	. Driveline Assembly
1.11	Y17C-0624	5	. Capscrew	1.44	195-0142	1	. Column, Steering
1.12	R13801813	6	. Capscrew	1.46	587192	1	. Cover Plate
1.13	R13811043	1	. Capscrew	1.47	208264	2	. Grommet
1.14	200454W	6	. Capscrew	1.48	258503	6	. Capscrew
1.15	200247	4	. Terminal Ring	1.49	R13809543	2	. Locknut
1.16	228351	10	. Terminal Ring	1.50	587019	12'	. Loom, Wire
1.17	221179	2	. Terminal Ring	1.56	221499W	7	. Capscrew
1.18	22635	2	. Diode	1.57	162572W	4	. Capscrew
1.19	243304	2	. Bearing Cup	1.59	249395	9	. Capscrew
1.20	243305	2	. Bearing Cone	1.61	234651	1	. Button, Horn
1.21	240151	2	. O-Ring	1.62	232182	1	. Knob, Spinner
1.22	576444	1	. Tube	1.63	R13803026	2	. Clip, Insul
1.23	576445	1	. Retainer Weldment, Bearing	1.64	207155	1	. Switch, Ignition w/Keys
1.24	Y09G-0820	6	. Capscrew	1.65	546943	1	. Decal
1.25	240566	2	. Relay	1.66	591148	1	. Plate, Base Adapt
1.26	240519	1	. Thermistor	1.78	Y25G-0516	4	. Capscrew
1.27	574208	1	. Bracket	1.79	R13802914	4	. Hard Washer
1.28	574276	1	. Actuator	1.80	R13811190	4	. Locknut
1.29	574409	1	. Plate, Mounting	1.82	586762	1	. Hose Tamer Weldment
1.30	593534	1	. Bulkhead Weldment	1.88	595697	2	. Plate, Seat Mount
1.31	219436	10'	. Wire	1.89	595999	1	. Plate, Adapt
1.32	231707	2'	. Wire				
1.33	588904	1	. Shim				

\* See Separate Coverage

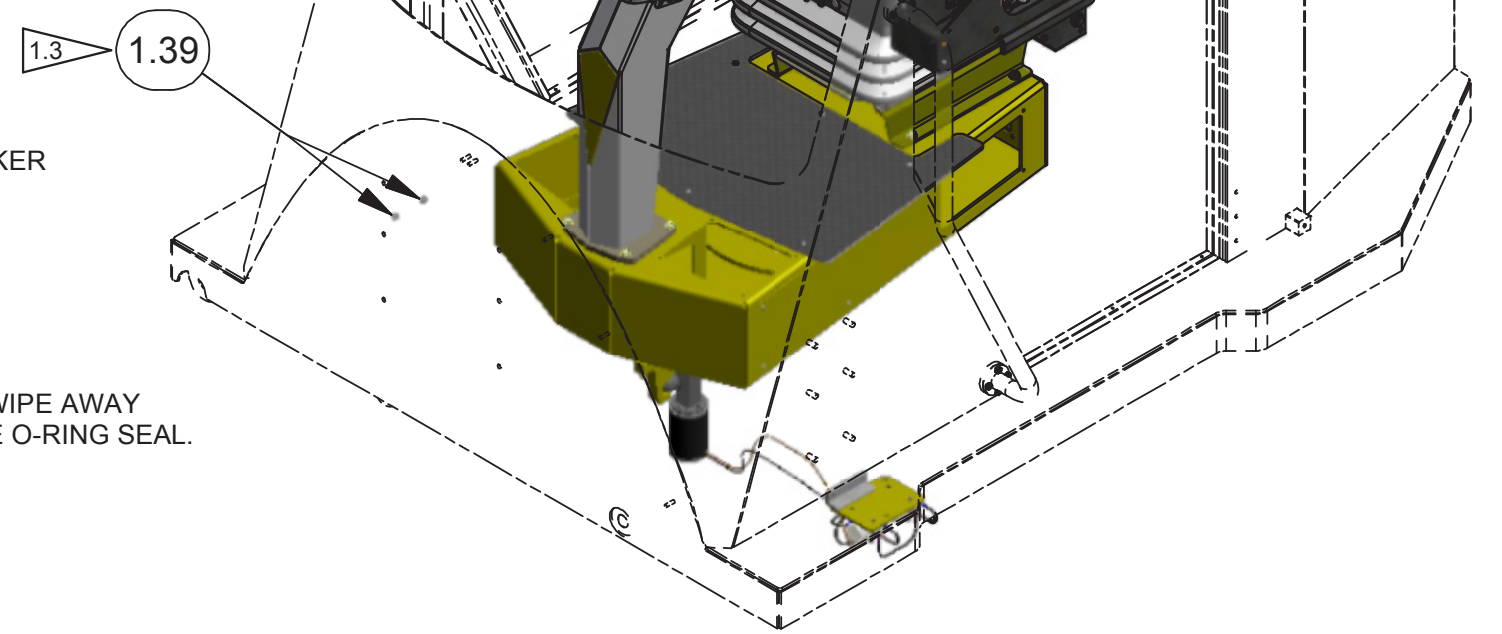


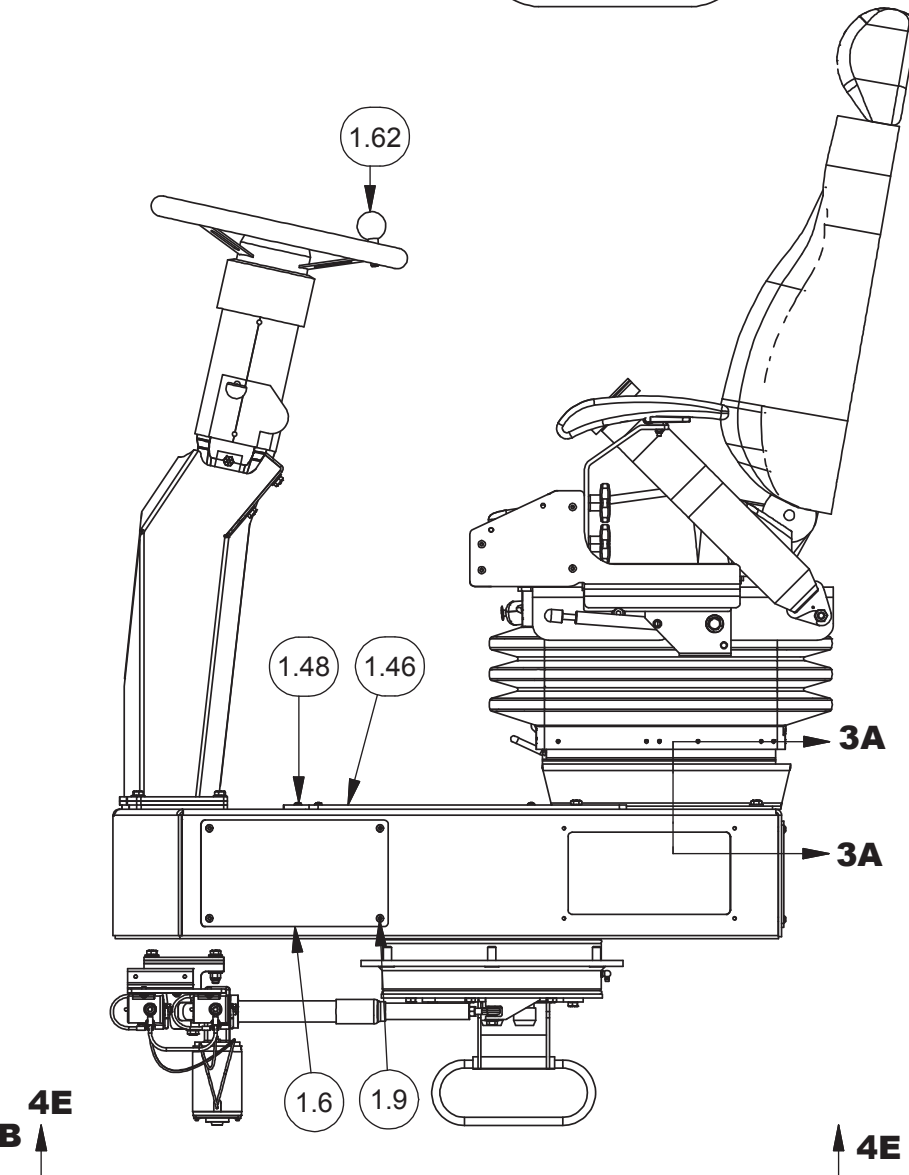
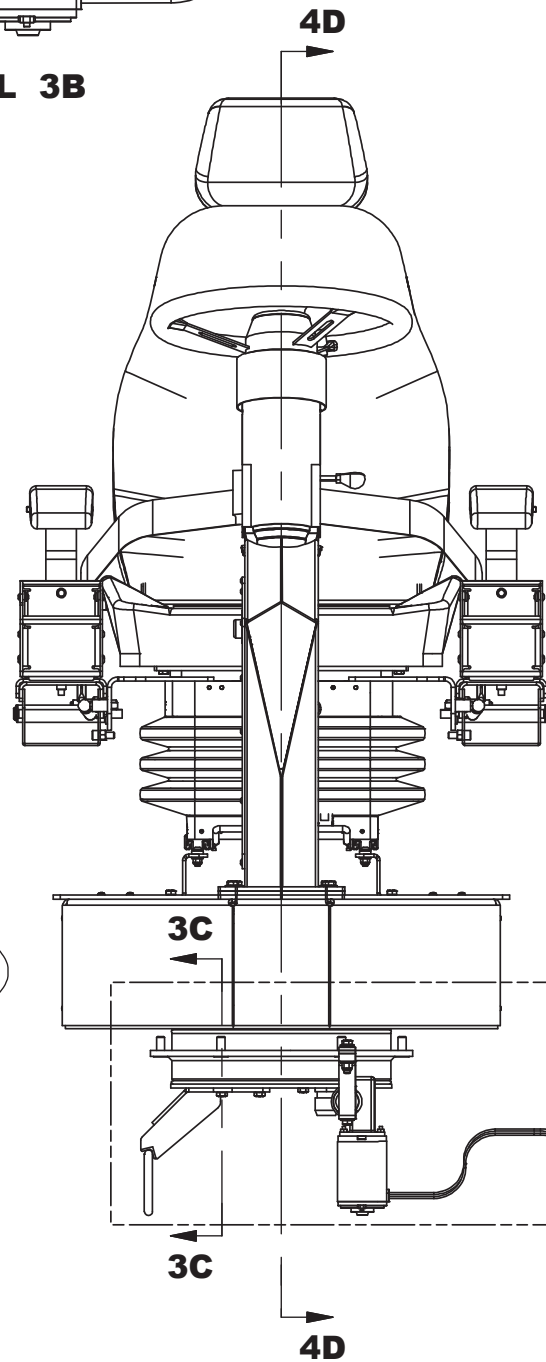
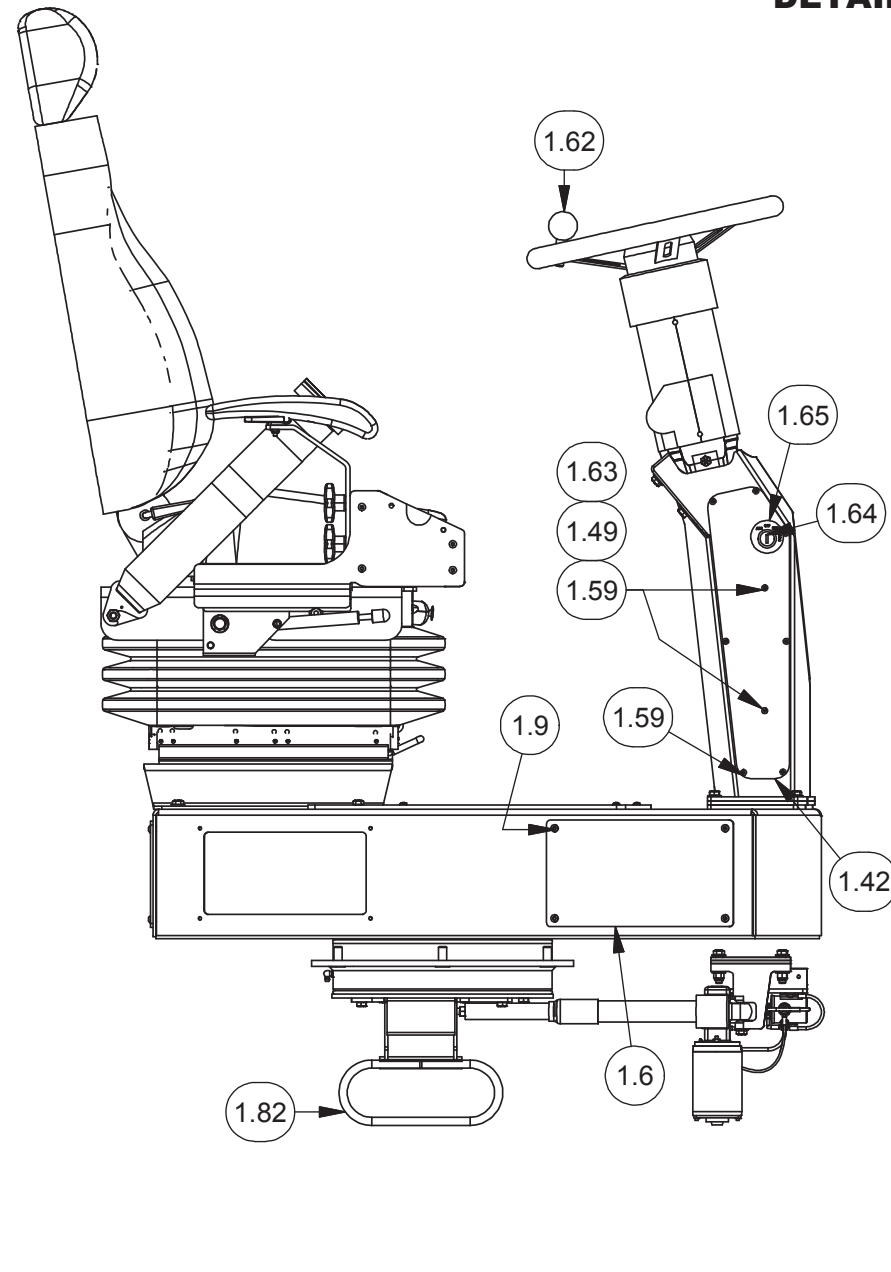
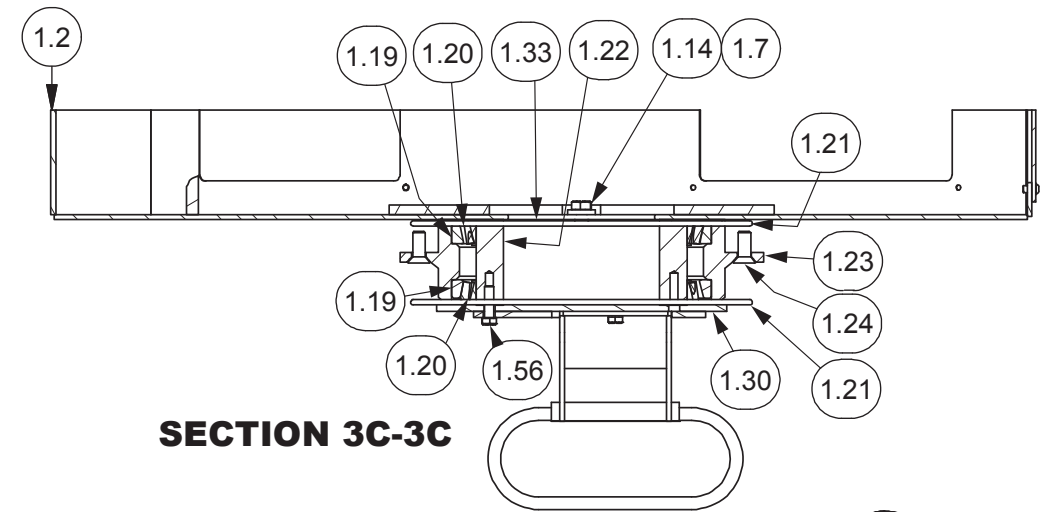
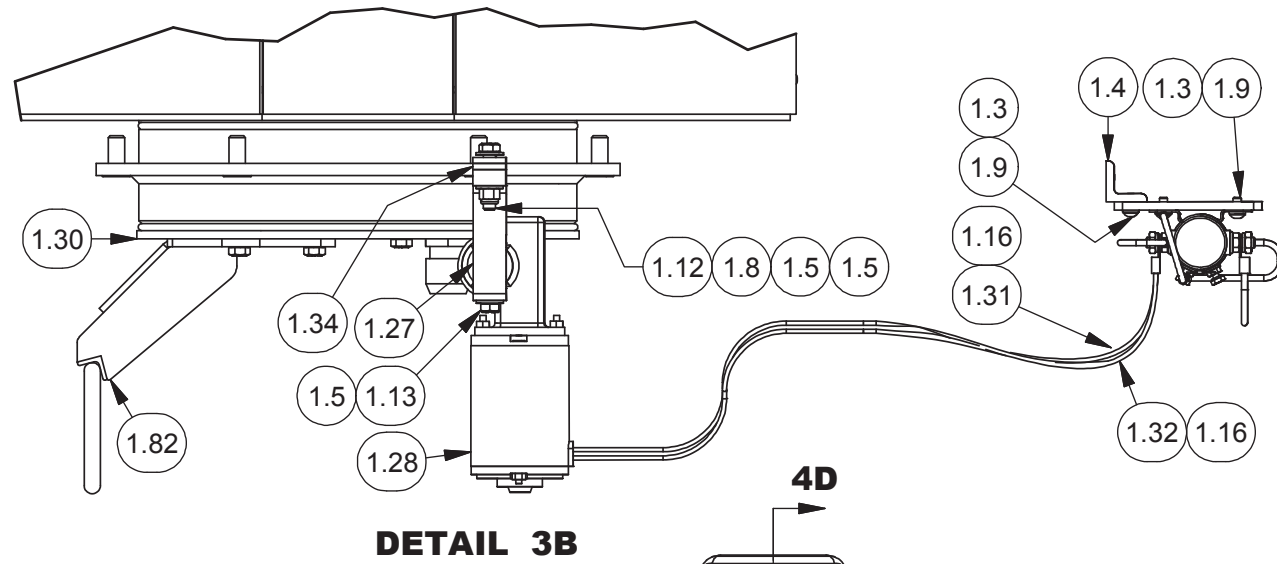
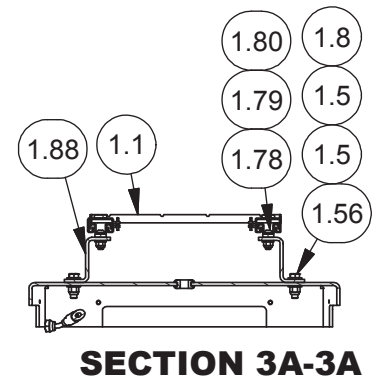
**HYD BULKHEAD SCHEMATIC**

LOOKING DOWN FROM THE CHAIR

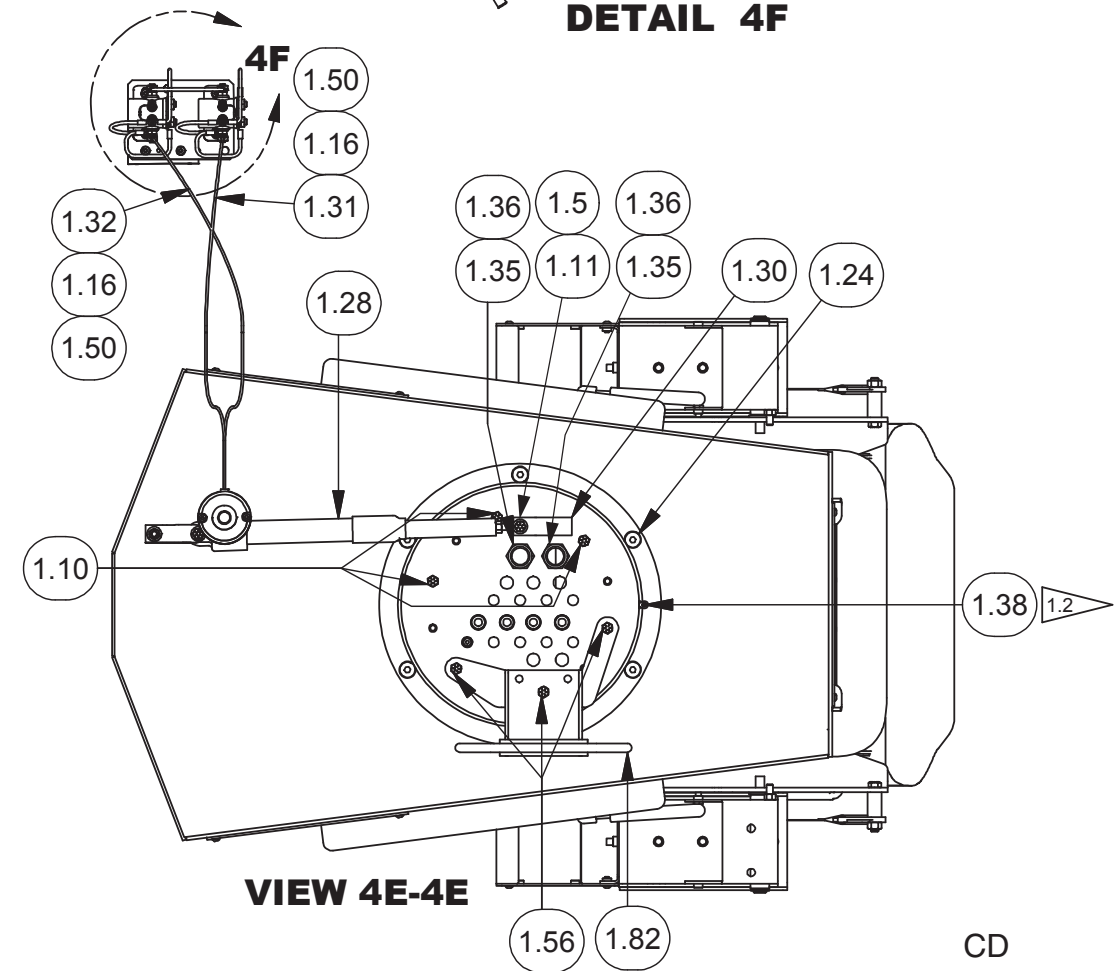
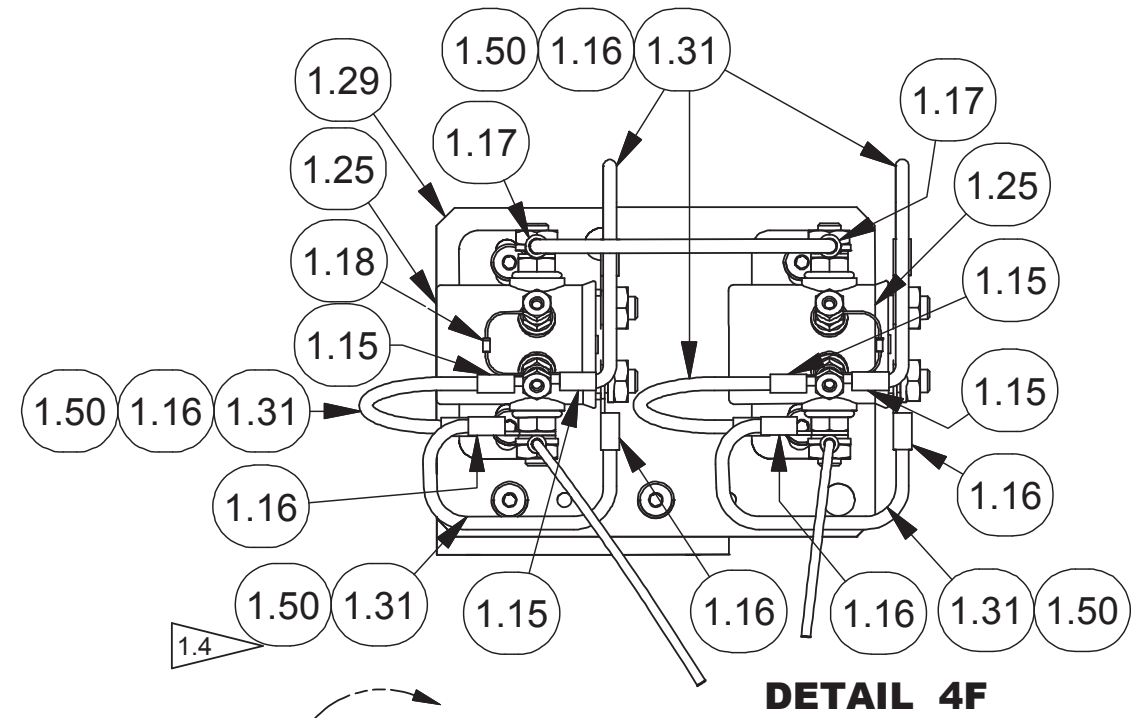
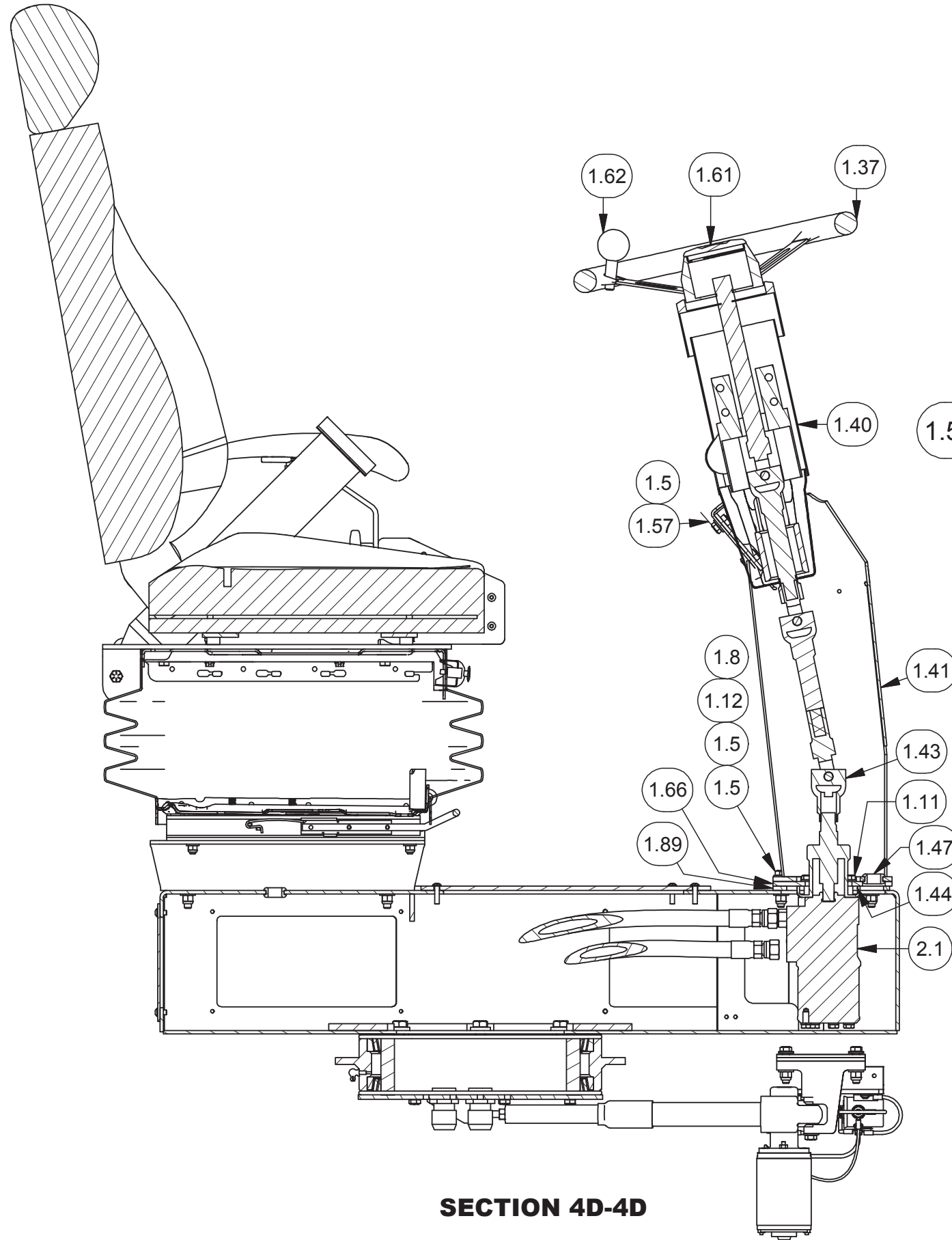
**NOTES:**

- 1.1 LOCATE THERMISTOR (NOT SHOWN) ON CIRCUIT BREAKER PANEL NEXT TO SEAT ROTATE CIRCUIT BREAKER.
- 1.2 LUBRICATE WITH GREASE UNTIL GREASE IS VISABLE AT THE O-RINGSEAL.  
 1. WIPE OFF RESIDUAL GREASE  
 2. ROTATE THE SEAT PLATFORM 90° AND REPEAT.  
 3. ROTATE THE SEAT PLATFORM SEVERAL TIMES AND WIPE AWAY ANY RESIDUAL GREASE THAT ACCUMULATES ON THE O-RING SEAL.
- 1.3 INSTALL PLUGS IN FLOOR IN UNUSED HOLES FOR THE LINEAR ACTUATOR BRACKET
- 1.4 INSTALL LOOM ON ALL SEAT ROTATE WIRES





CD



CD