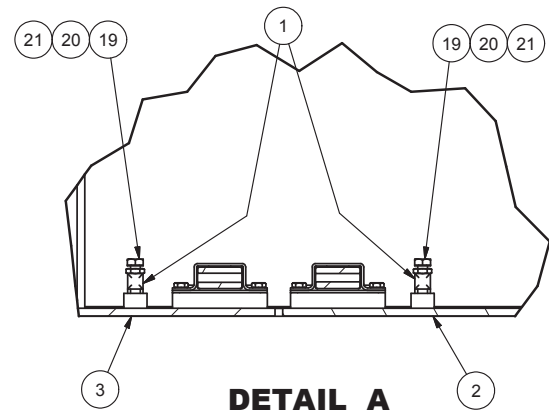

Service Bay Assembly - RH

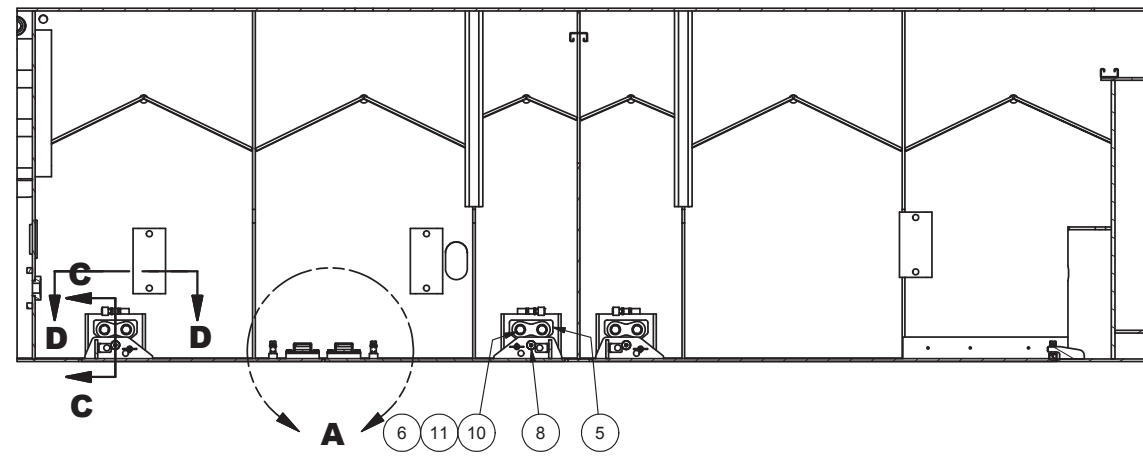
Service Bay Assembly - RH

Item	Part No.	Qty	Description	Item	Part No.	Qty	Description
	594192		Service Bay Assembly - RH				
1	* 594194	1	. Service Bay, RH	12	594938	2	. Belt, Support
2	* 594902	1	. Assembly, Door	13	Y19C-M2450	4	. Capscrew
3	* 594903	1	. Assembly, Door	14	302406W	4	. Locknut
4	594905	1	. Weldment, Door	15	R13811213	8	. Capscrew
5	590815	6	. Weldment, Door Hinge	16	296420W	16	. Hard Washer
6	590826	6	. Plate, Washer	17	302401W	8	. Locknut
7	594937	1	. Weldment, Step	19	251199	8	. Capscrew
8	591711	6	. Bolt, Shoulder	20	587034	8	. Jam Nut
9	594935	4	. Plate, Clamp	21	592532	8	. Bumper, Threaded
10	293646W	12	. Capscrew	22	* 594179	2	. Assembly, Handrail Clamp
11	296422W	16	. Hard Washer				

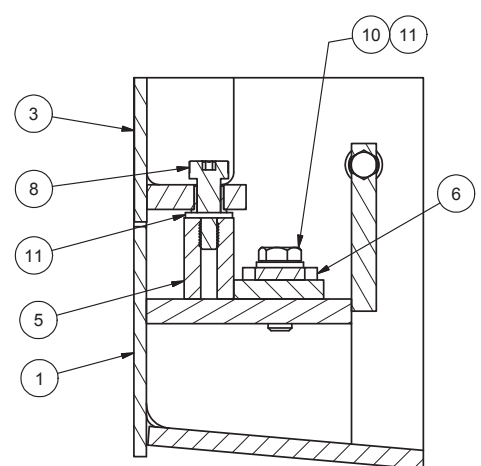
* See Separate Coverage



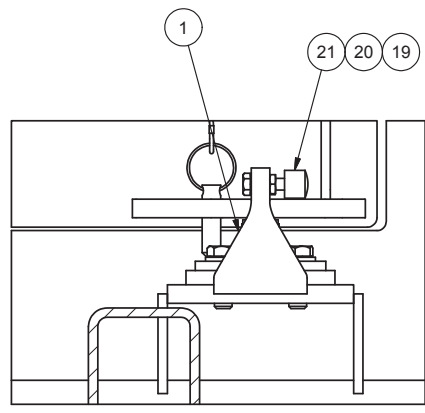
DETAIL A
TYP TOP AND BOTTOM. ADJUST ITEM 21 TO ALLOW DOORS TO BE LATCHED TIGHT WHEN CLOSED.



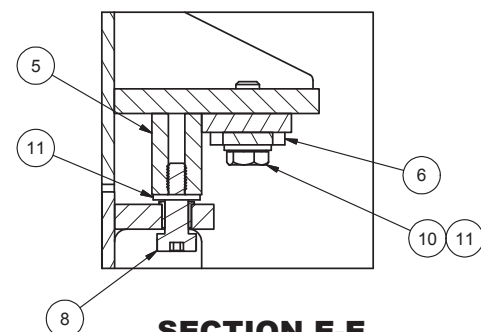
SECTION B-B



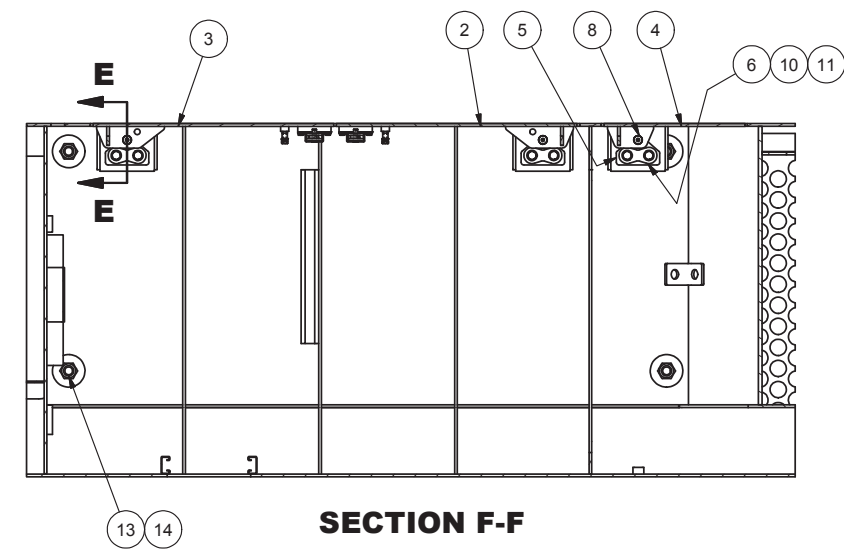
SECTION C-C
TYP FOR ALL BOTTOM DOOR HINGE POINTS



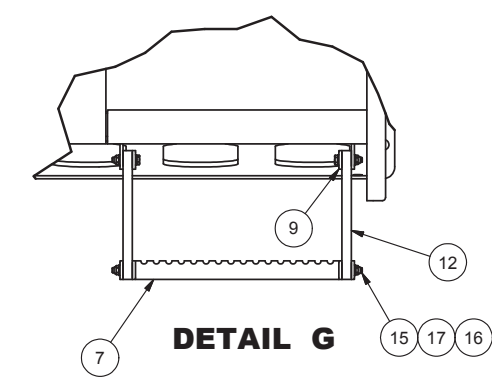
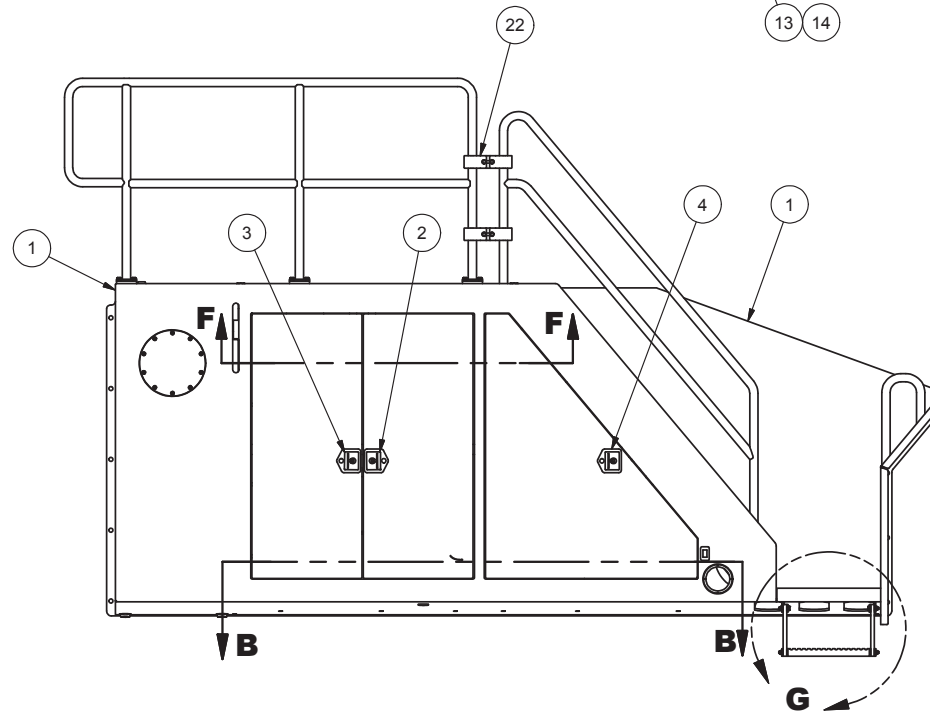
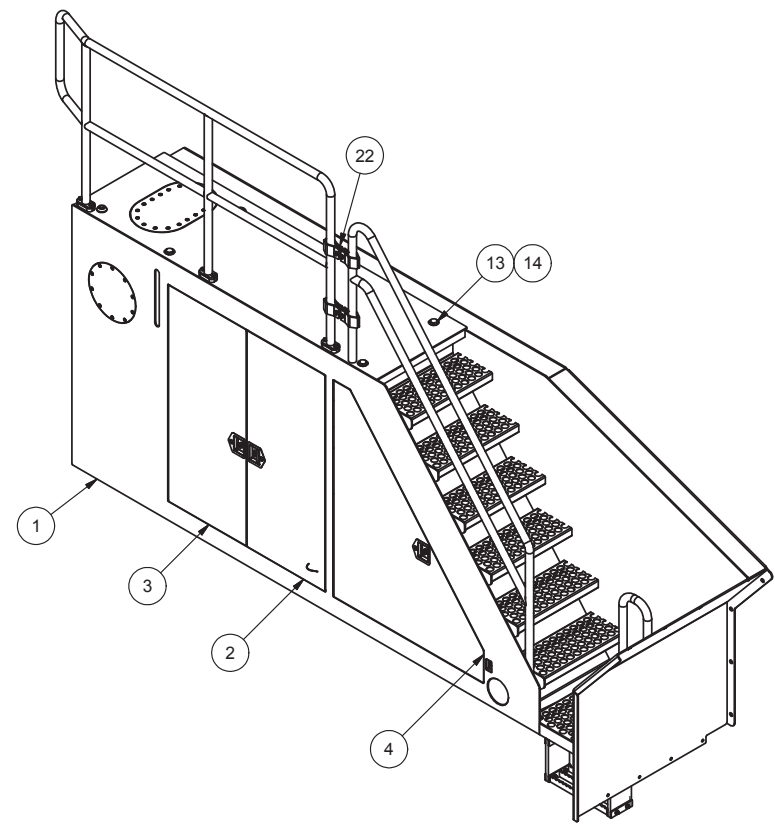
SECTION D-D
TYP FOR ALL BOTTOM DOOR HINGE POINTS. ADJUST ITEM 21 TO STOP DOOR WHEN OPENING PRIOR TO INTERFERING WITH ADJACENT DOOR.



SECTION E-E
TYP FOR ALL DOOR HINGE POINTS



SECTION F-F



DETAIL G