

---

Installation, Chassis Components

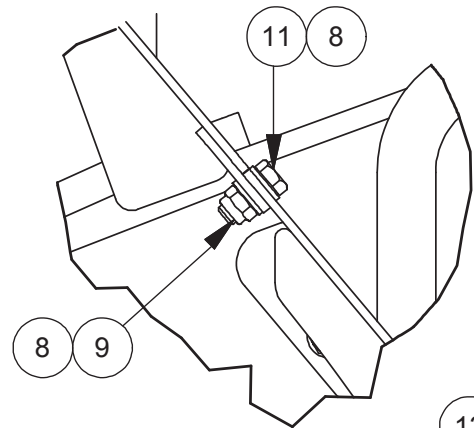
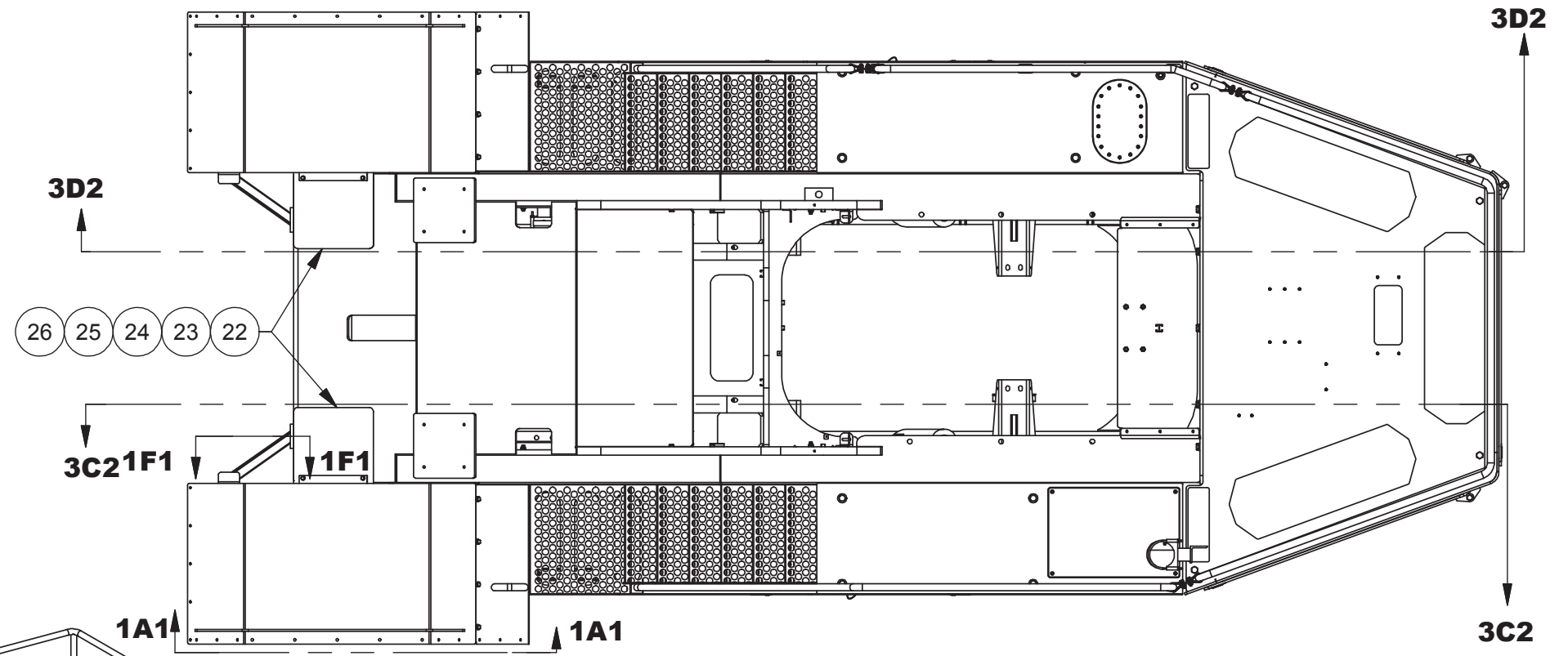
## Installation, Chassis Components

Item	Part No.	Qty	Description	Item	Part No.	Qty	Description
	<b>594190</b>		<b>Installation, Chassis Comps</b>				
1	594191	1	. Weldment, Chassis	16	594958	1	. RH Fender
2	* 594192	1	. Sub-Assembly, RH Service Bay	17	* 594179	2	. Assembly, Handrail Clamp
3	* 594193	1	. Sub-Assembly, LH Service Bay	18	296434W	23	. Washer
4	* 594782	1	. Air Box	19	302406W	9	. Locknut
5	Y19C-M16100	10	. Capscrew	20	274044W	9	. Capscrew
6	Y19C-M1690	4	. Capscrew	21	Y19C-M2450	5	. Capscrew
7	Y19C-M1645	30	. Capscrew	22	594449	2	. Mud Flap
8	296426W	108	. Washer	23	594447	2	. Cover Plate Mount
9	302404W	50	. Locknut	24	248986	4	. Capscrew
10	293644W	6	. Capscrew	25	296422W	8	. Hard Washer
11	241023	8	. Capscrew	26	302402W	4	. Locknut
12	2305715W	6	. Washer	27	596055	1	. Stiff Rod - LH
13	591730	6	. Bushing	28	596056	1	. Stiff Rod - RH
14	Y078545	4	. Capscrew	29	596063	2	. Plate, Washer
15	594957	1	. LH Fender	30	Y19C-M1670	2	. Capscrew

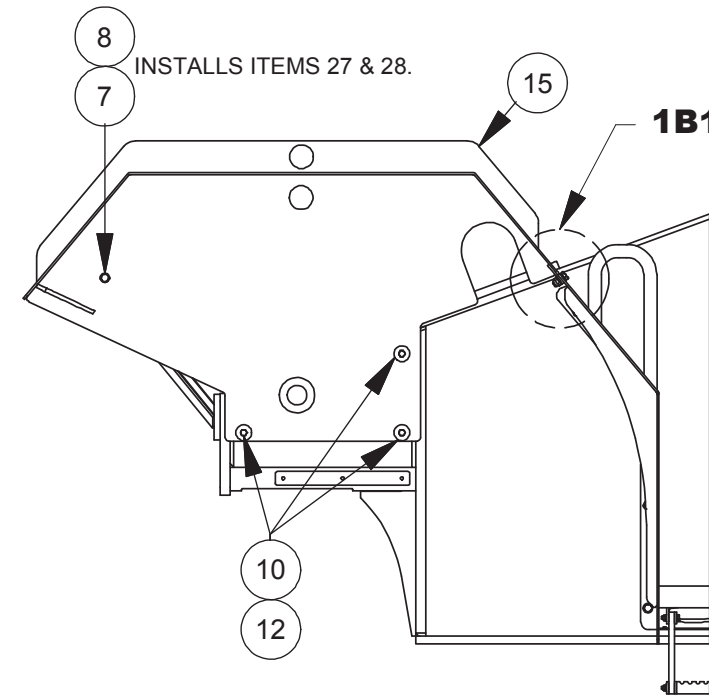
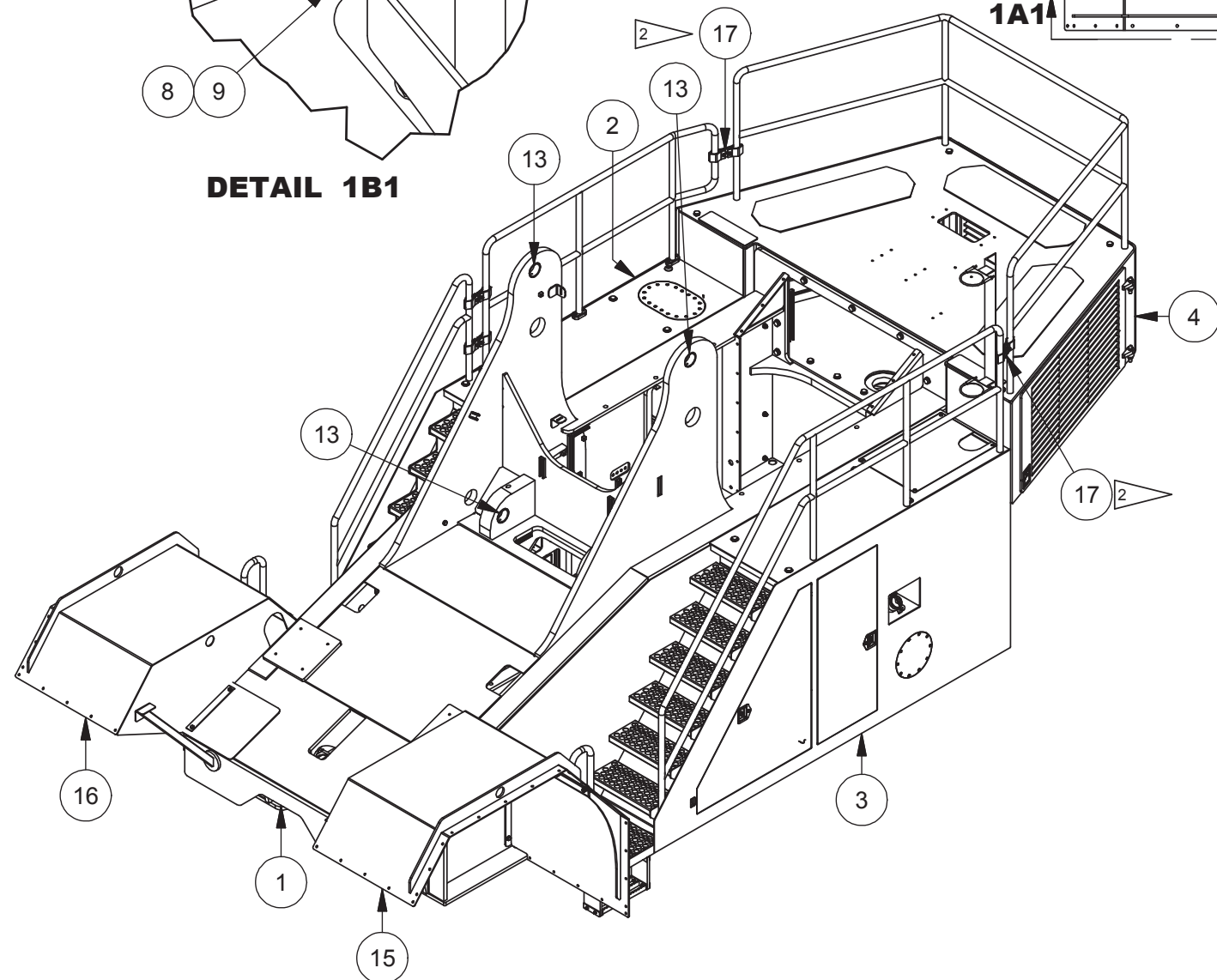
\* See Separate Coverage

**NOTES:**

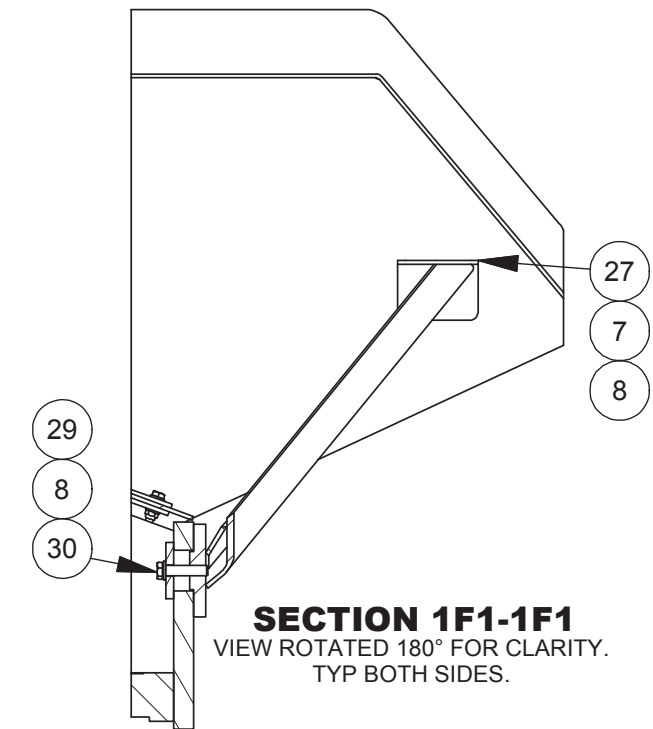
1. UNIT WEIGHT IS 33,875 LBS
2. ORIENT CAPSCREWS FOR ITEM 17 WITH THREADS POINTING AWAY FROM WALKWAYS.



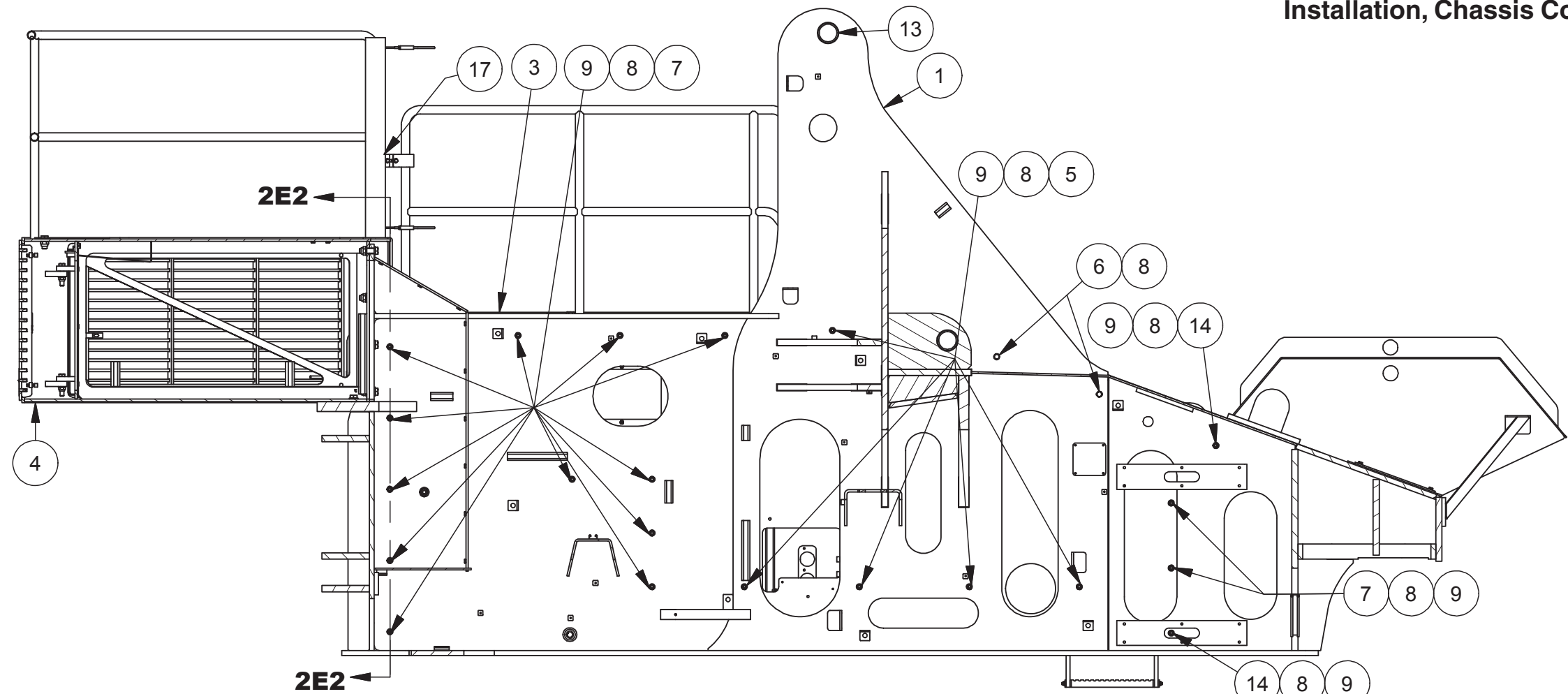
**DETAIL 1B1**



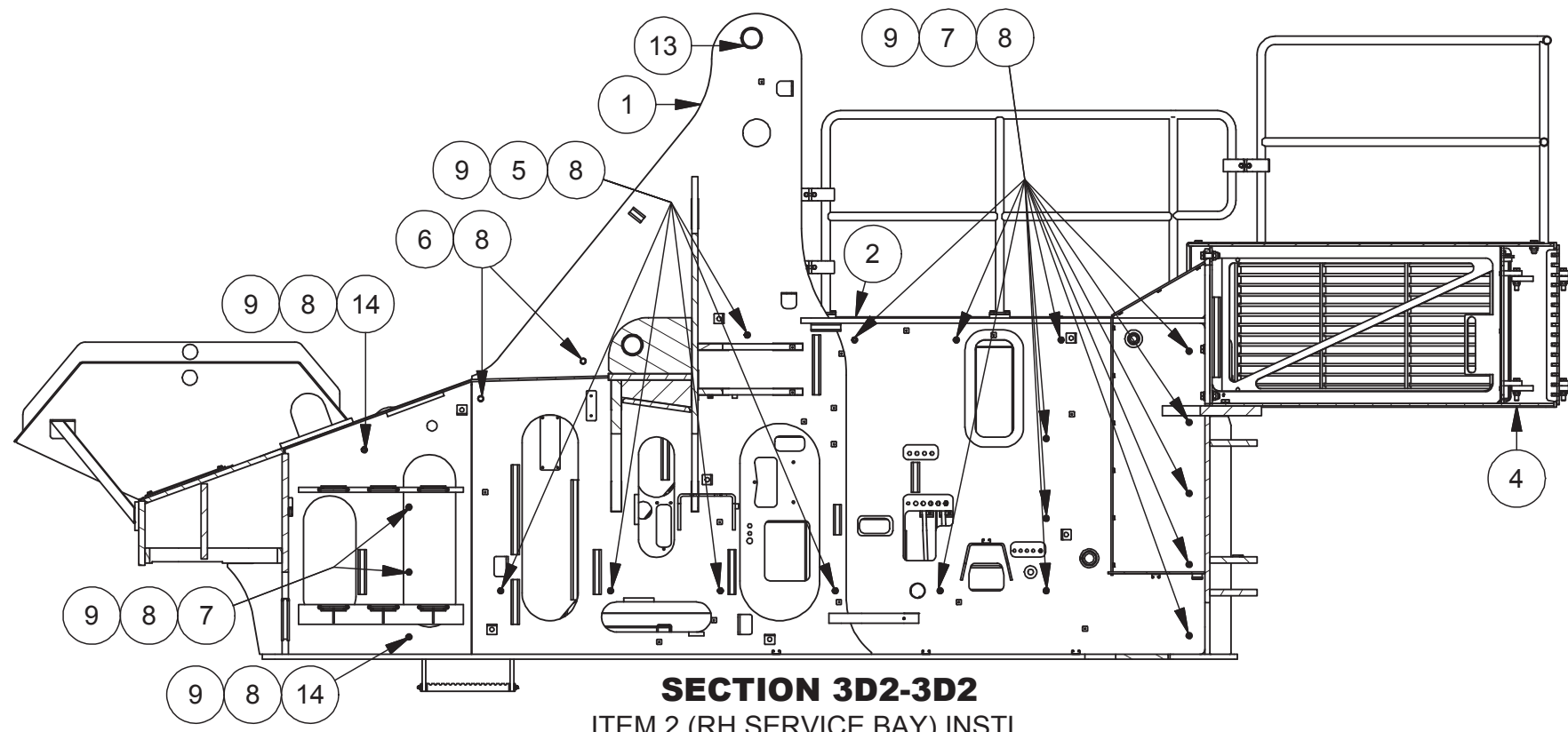
**SECTION 1A1-1A1**  
TYP ITEMS 7, 8, 15, & 16.



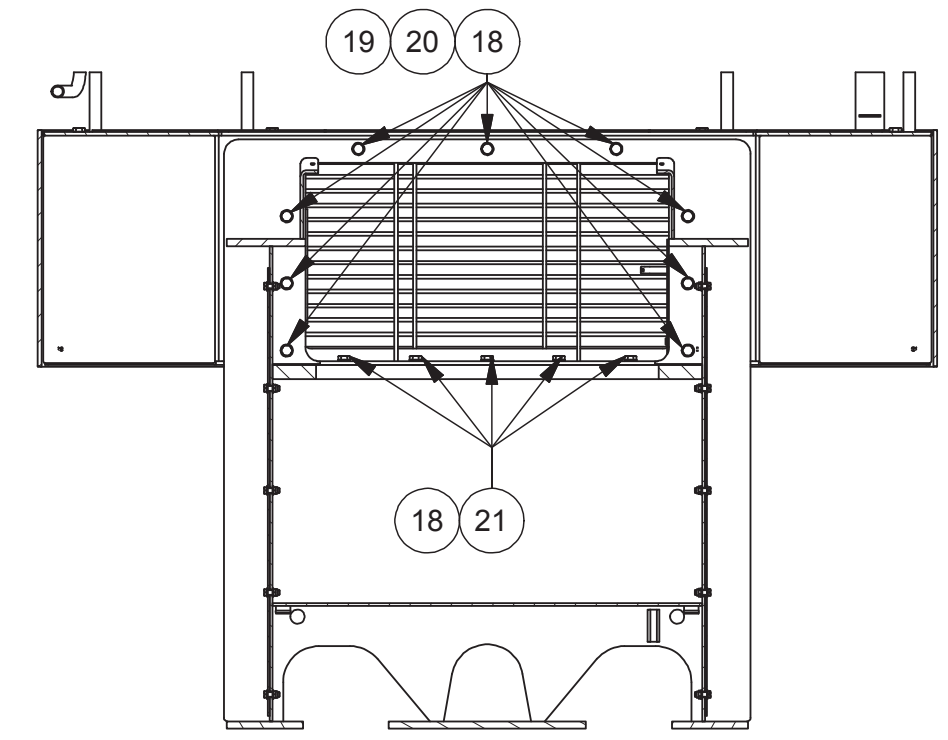
**SECTION 1F1-1F1**  
VIEW ROTATED 180° FOR CLARITY.  
TYP BOTH SIDES.



**SECTION 3C2-3C2**  
ITEM 3 (LH SERVICE BAY) INSTL



**SECTION 3D2-3D2**  
ITEM 2 (RH SERVICE BAY) INSTL



**SECTION 2E2-2E2**  
ITEM 4 (AIR BOX) INSTL