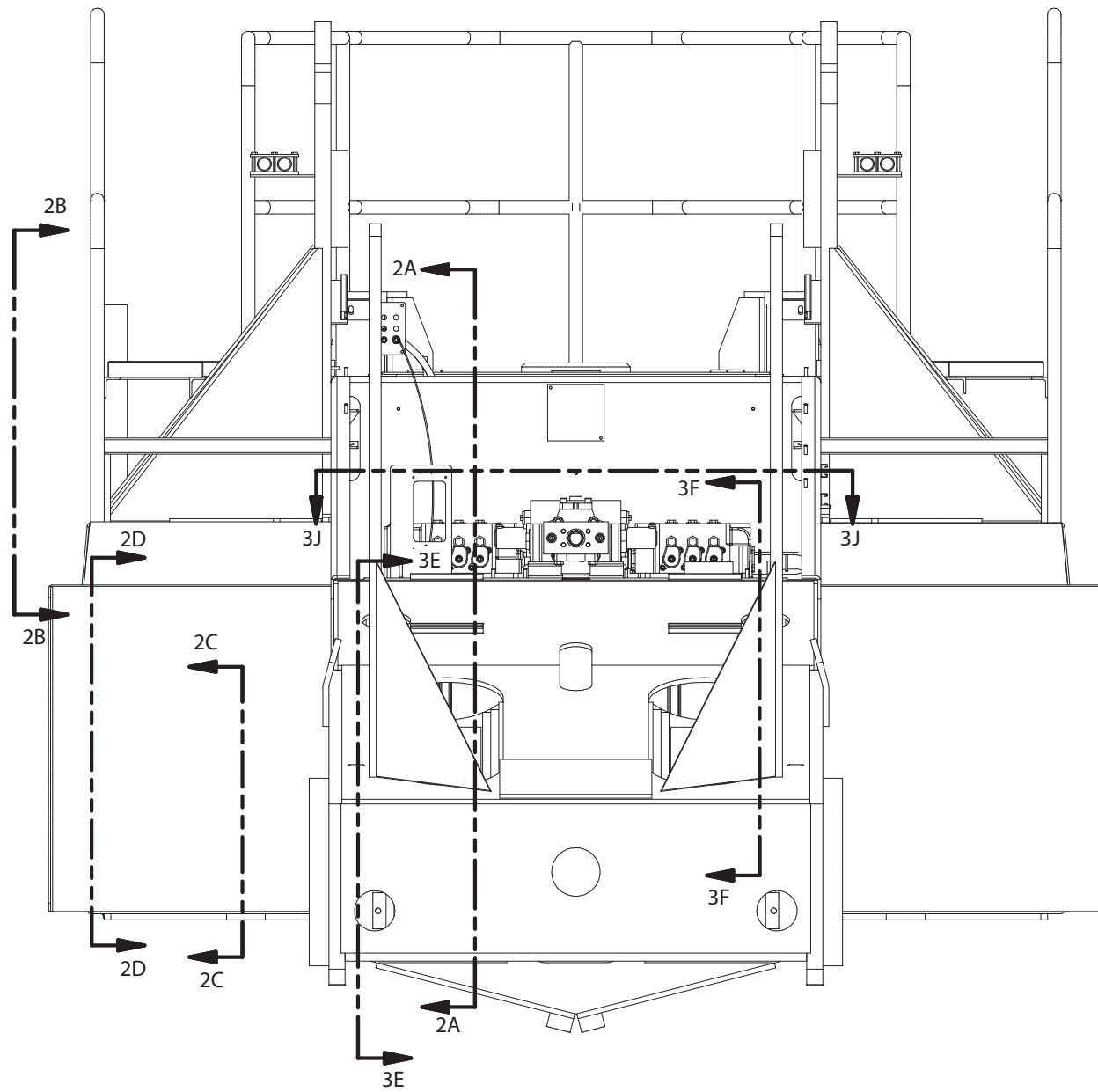

Hydraulic System - Chassis

Hydraulic System - Chassis

Item	Part No.	Qty	Description	Item	Part No.	Qty	Description
	594108		Hydraulic System Chassis				
1	* 587385	3	. Pressure Filter	36	229389	3	. Fitting
2	253098	4	. Ball Valve	38	* 587036	1	. Pressure Filter
3	253421	1	. Fitting, Ha	45	209067	2	. Fitting
4	254509	1	. Adapter	50	* 591425	1	. Manifold Accum Charge
5	586918	1	. Sender,Oil Temp	54	245334	1	. Indicator, Elec/Vis
6	229666	1	. Fitting	56	* 243457	2	. Filter, Return
7	251581	1	. Fitting	76	209488	3	. Fitting
8	225661	2	. Kit, Split Flange	86	594503	6	. Kit, Split Flange
	203528	1	. . O-Ring	87	586842	1	. Bracket, Oil Cooler
	229082	4	. . Capscrew	88	* 258300	1	. Cooler, Hydraulic Oil
	230769	2	. . Clamp Half	90	564238	1	. Elbow Weldment
9	209083	2	. Fitting	91	253420	2	. Fitting, Ha
10	209486	1	. Fitting	92	209714	3	. Fitting
11	209164	1	. Fitting	93	221231	1	. Fitting
12	209805	1	. Fitting	95	223784	2	. Fitting
13	227467	1	. Fitting	96	237508	5	. Clamp
14	R13809945	4	. T-Bolt Clamp	97	227938	1	. Fitting
15	216042	12	. T-Bolt Clamp	100	14795	1	. Fitting
16	Y17C-0624	2	. Capscrew	101	CLP0100112	5	. Clamp
17	595307	1	. Plate, High Press Filter	104	224298	1	. Fitting
18	296420W	16	. Hard Washer	106	18889W	4	. Capscrew
19	563470	1	. Elbow Weldment	107	221767W	12	. Hard Washer
20	594438	1	. Manifold, Return Filter	108	221771W	12	. Washer
21	231251	4	. Clamp	109	221560W	4	. Capscrew
22	258028	7	. Clamp	110	R13811191	6	. Locknut
23	209578	2	. Clamp	111	Y17C-0616	4	. Capscrew
24	594702	16	. Stud	112	258838	12'	. Trim, Edge
25	220794	1	. Fitting	113	YHGB 06	10'	. Hose Guard
26	209191	1	. Fitting	114	211551	1	. Fitting
27	221574W	4	. Capscrew	115	302401W	16	. Locknut
28	R13811193	4	. Locknut	116	246037	1BTL	. Threadlock, Removable
29	593945	1	. Switch, Temp	120	594461	1	. Kit, Hose
30	209133	1	. Fitting				
31	212762	2	. Fitting				

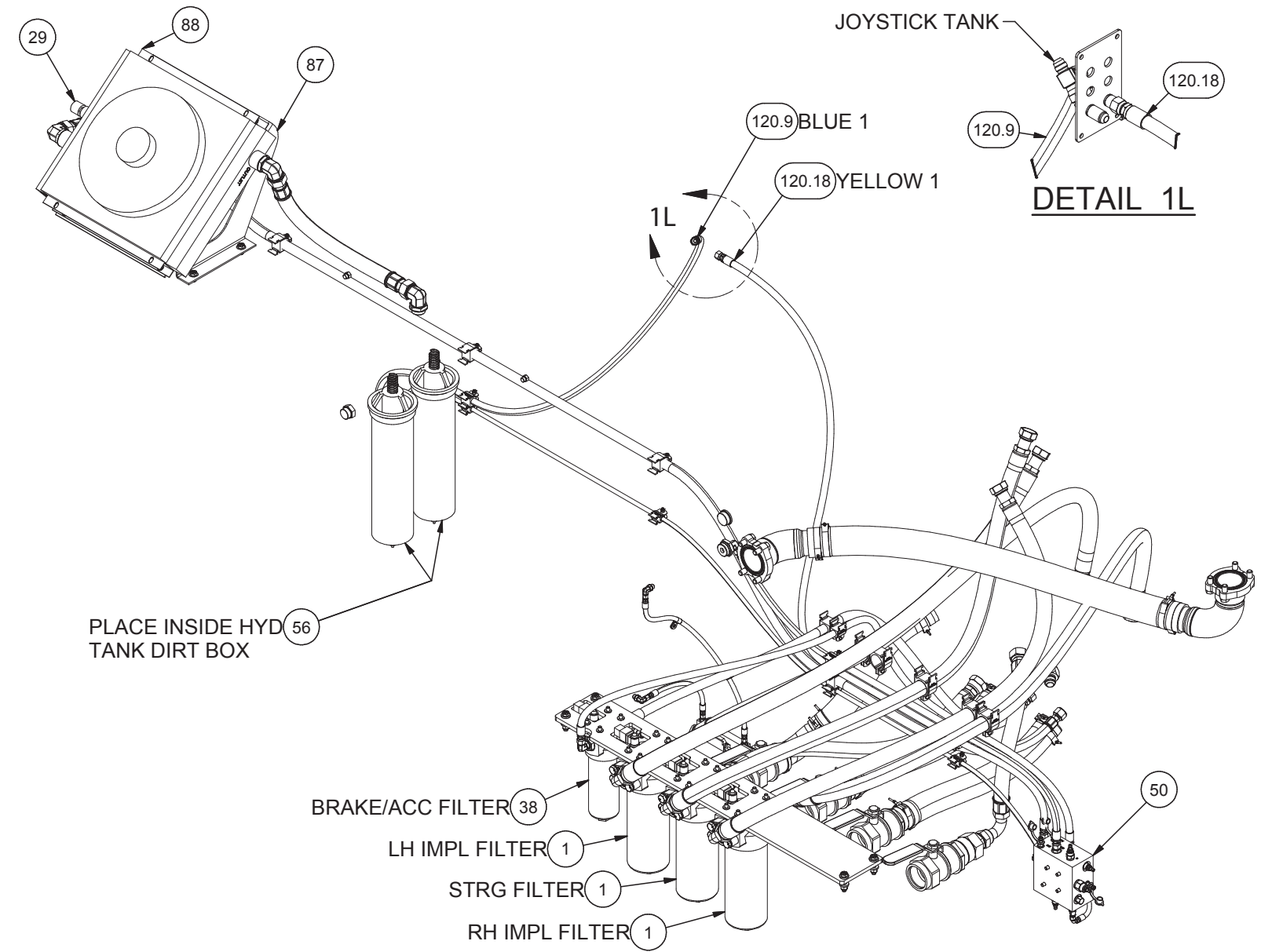
* See Separate Coverage

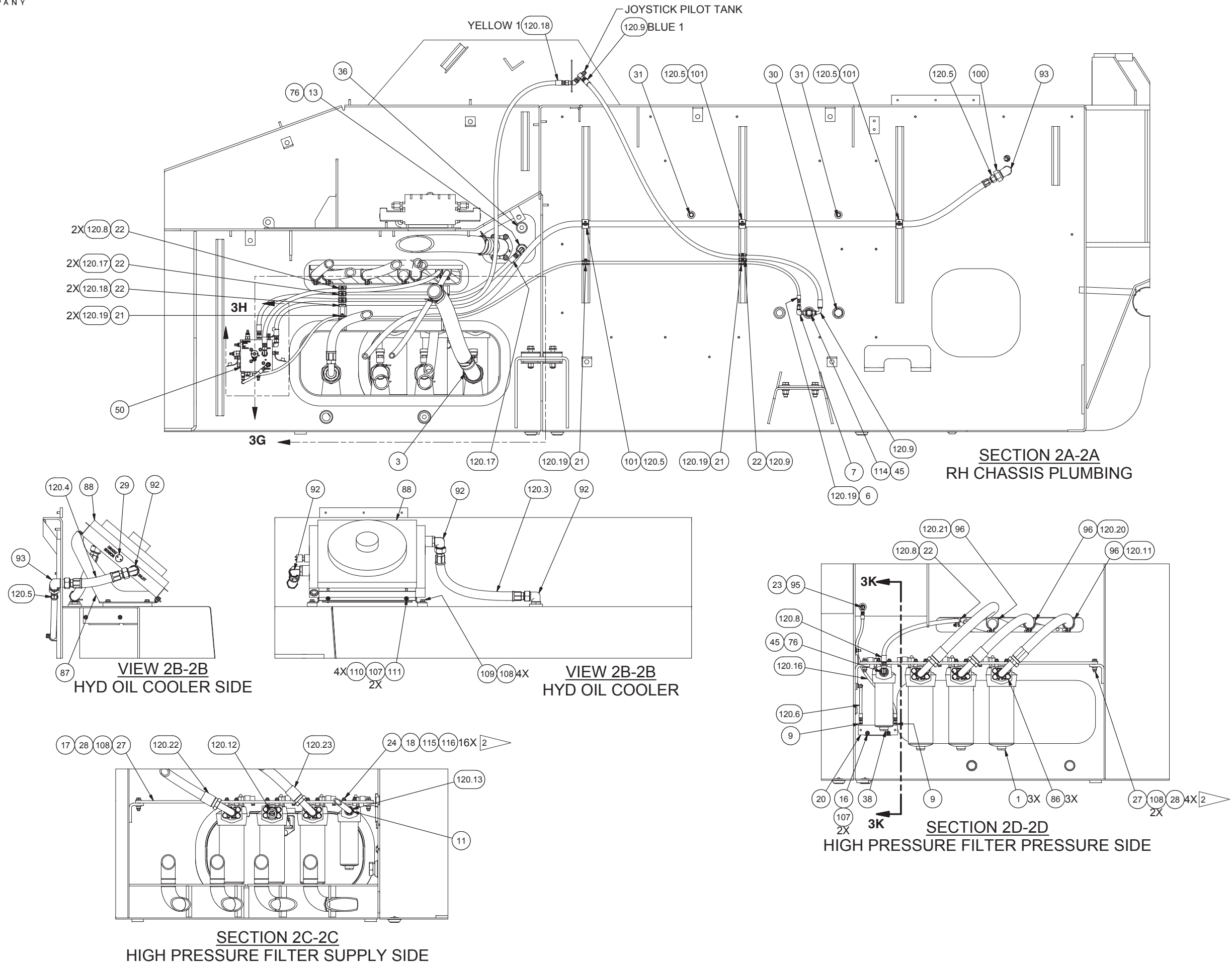


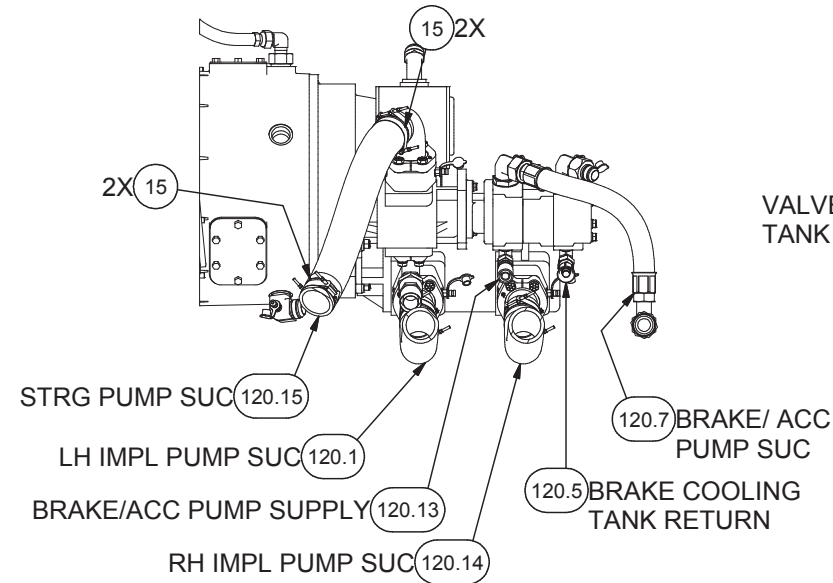
NOTES:

1. ITEM 53 AND 54 ARE NOT SHOWN. THESE ITEMS ARE USED TO PROTECT HOSES WHEN PASSING THROUGH BULKHEADS OR THE DECK.

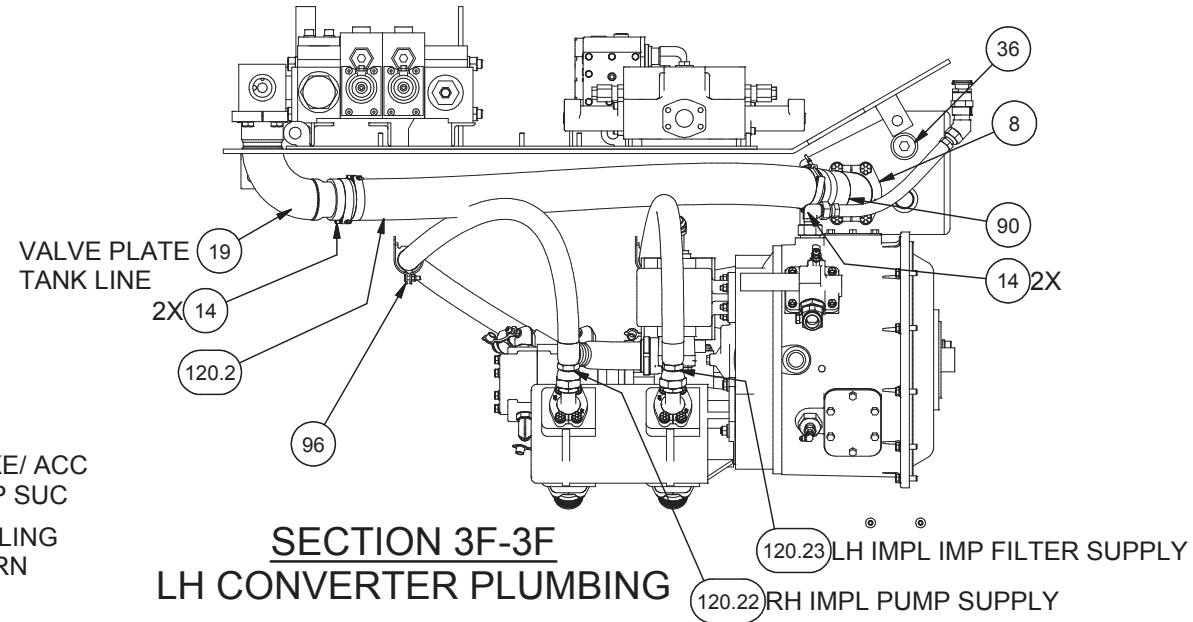
TORQUE BOLTS TO SOP: 006-1 & APPLY LOCTITE 242 TO STUD AND FILTER ASSEMBLY.



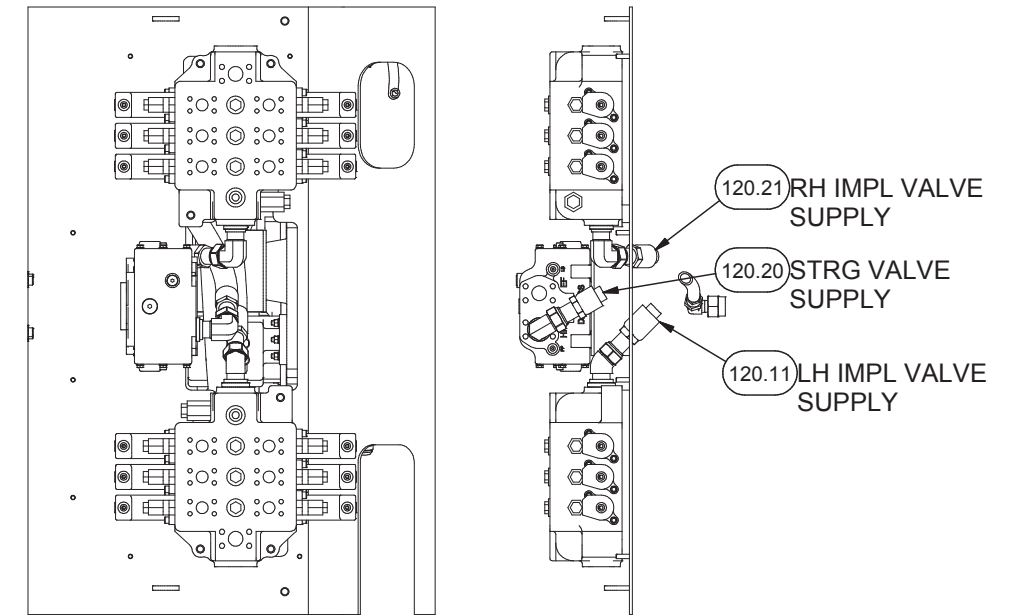




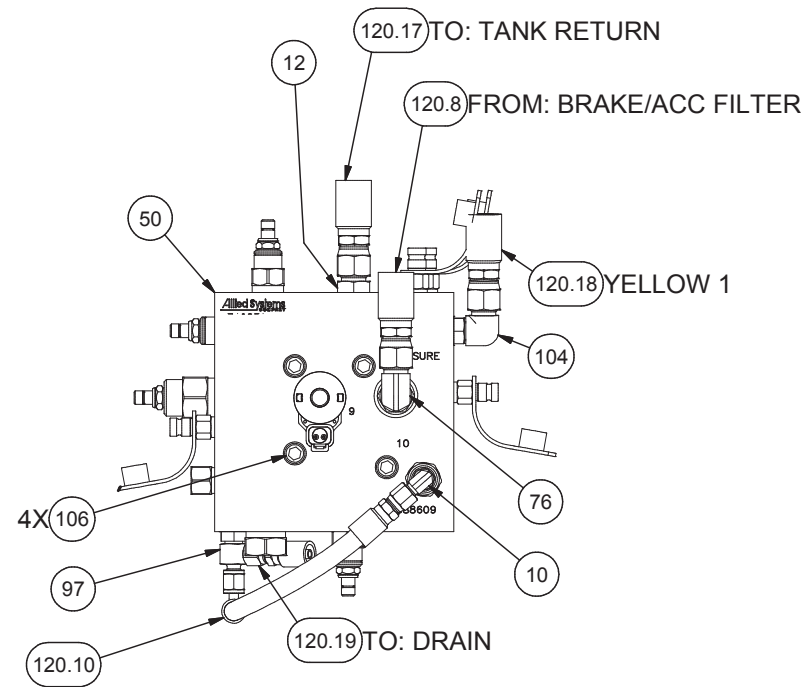
**SECTION 3E-3E
RH CONVERTER PLUMBING**



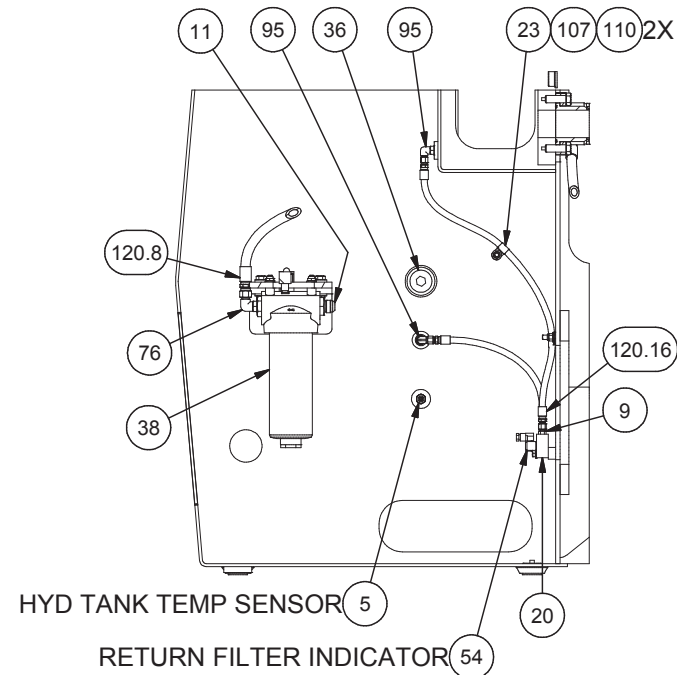
**SECTION 3F-3F
LH CONVERTER PLUMBING**



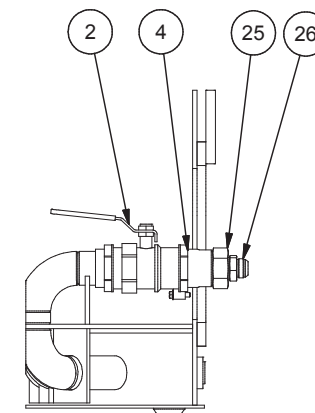
**SECTION 3J-3J
VALVE PLATE CONNECTIONS**



**DETAIL 3H
BRAKE/ACC MANIFOLD PLUMBING**



**SECTION 3K-3K
RETURN FILTER INDICATOR PLUMBING**



**DETAIL 3G
SUCTION BOX DETAIL**

