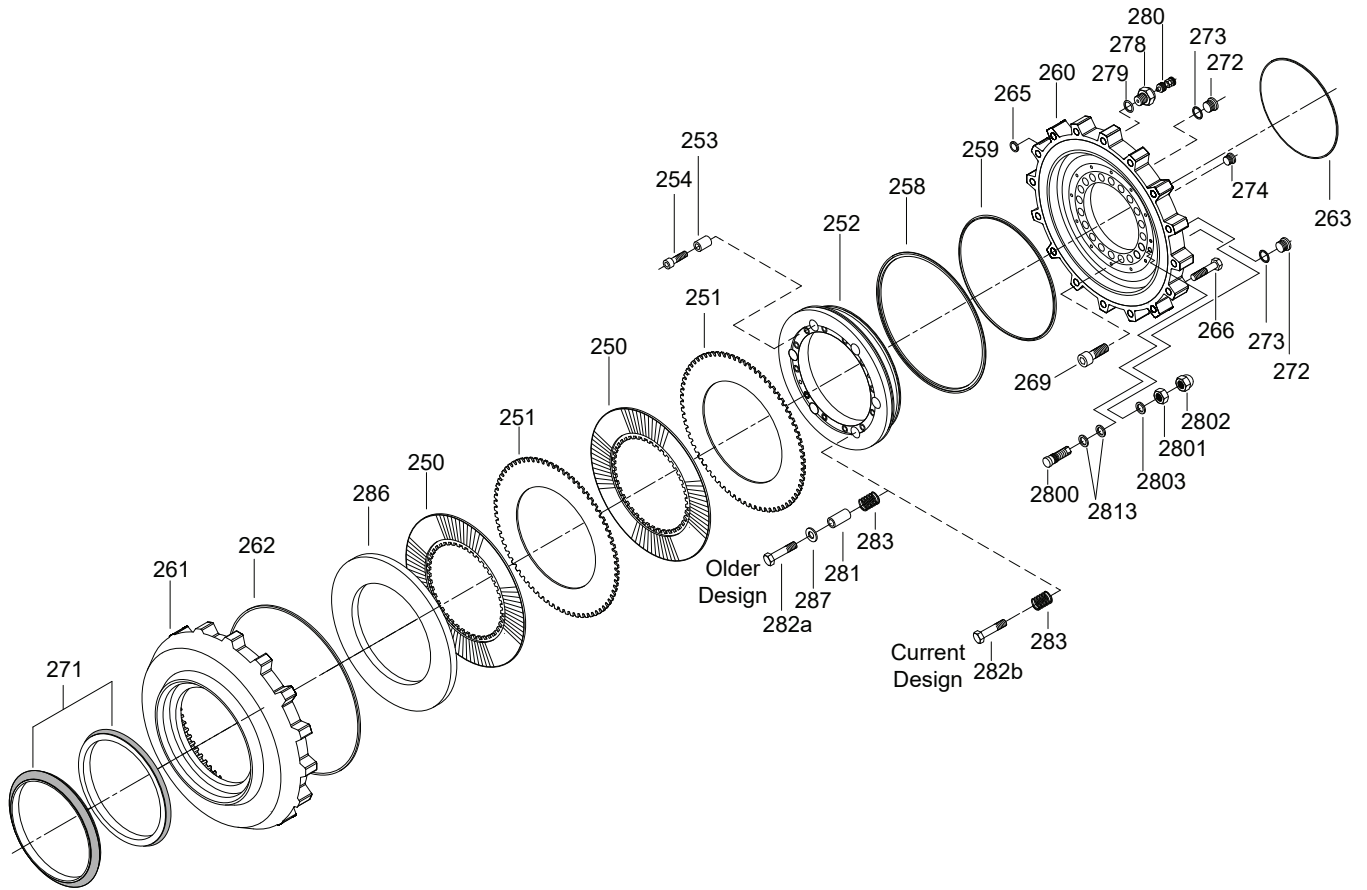


Brake Assembly



Item	Part No.	Qty	Description	Item	Part No.	Qty	Description
<b>593137 Brake Assembly</b>							
250	*b*d 592917	5	. Disk, Inner	280	592936	1	. Valve
251	*b*d 592918	6	. Disk, Outer	281	*e 592937	8	. Pipe
252	592919	1	. Piston	282a	*f 592938	16	. Hexagon Screw
253	592920	2	. Bushing	282b	*g 262194	16	. Hexagon Screw
254	592921	2	. Screw, Hx Soc	283	592939	16	. Spring, Comp
258	*a 592922	1	. Gasket	286	592940	1	. Disk
259	*a 592923	1	. Gasket	287	*e 592941	8	. Disk
260	592924	1	. Carrier, Brake	2800	593040	3	. Bolt
261	592925	1	. Housing, Brake	2801	593041	3	. Nut
262	*a 592926	1	. O-Ring	2802	593042	3	. Nut, Cap
263	*a 592927	2	. O-Ring	2803	*a 593043	3	. O-Ring
265	*a 592928	3	. O-Ring	2813	*a 593044	6	. O-Ring
266	592902	24	. Capscrew, Soc				
269	592929	26	. Capscrew, Soc				
271	*a*c 598810	1	. Seal, Face	*a Included in Brake Seal Kit 593120			
272	592931	1	. Plug, Screw	*b Use Centering Tool 593405			
273	*a 592932	1	. Ring, Sealing	*c Use Installation Tool 593406			
274	592933	1	. Plug	*d Included in Brake Lining Kit 593121			
278	592934	1	. Socket, Bleeding	*e Not Used on Current Design			
279	*a 592935	1	. Ring, Sealing	*f Older Design. Used When Items 281 and 287 are Installed			
				*g Current Design. Used When Items 281 and 287 are Not Installed			
				NSS Not Sold Separately			