

---

Hydraulic System - Chassis

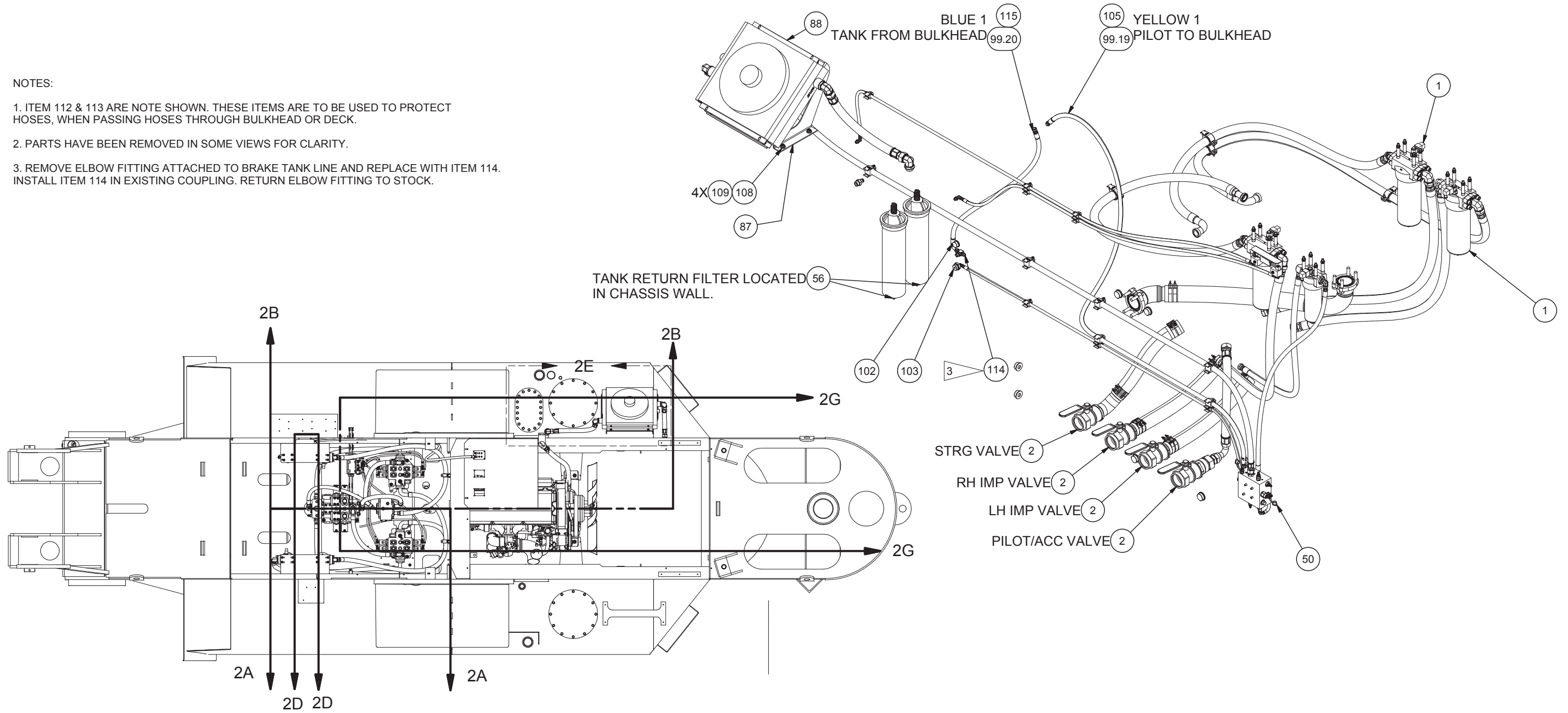
## Hydraulic System - Chassis

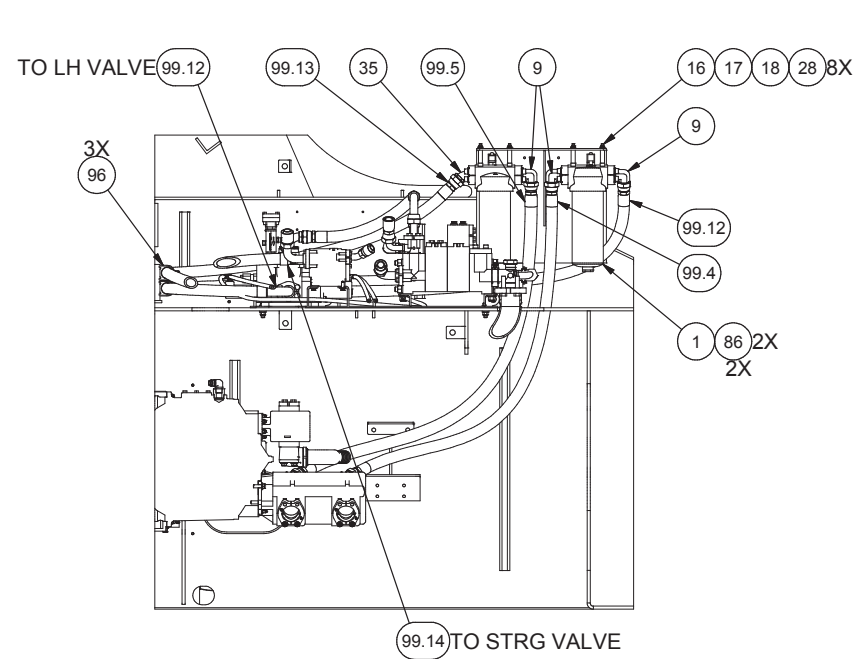
Item	Part No.	Qty	Description	Item	Part No.	Qty	Description
	<b>592454</b>		<b>Hydraulic Sys-Chassis</b>				
1	* 587385	3	. Pressure Filter	76	209488	2	. Fitting
2	253098	4	. Ball Valve	86	587963	6	. Kit, Split Flange
3	253421	1	. Fitting, Ha	87	586842	1	. Bracket, Oil Cooler
4	254509	1	. Adapter	88	* 258300	1	. Cooler, Hydraulic Oil
5	586918	1	. Sender, Oil Temp	89	221763W	4	. Washer
6	587674	1	. Fitting	90	564238	1	. Elbow Weldment
7	12666	1	. Fitting	91	253420	2	. Fitting
8	225661	2	. Kit, Split Flange	92	209714	3	. Fitting
	203528	1	. O-Ring	93	221231	1	. Fitting
	229082	4	. Capscrew	94	231251	8	. Clamp
	230769	2	. Clamp Half	95	223784	2	. Fitting
9	251534	4	. Fitting	96	237508	4	. Clamp
10	209486	4	. Fitting	97	227938	1	. Fitting
14	R13809945	4	. T-Bolt Clamp	98	215384	1	. Fitting
15	216042	12	. T-Bolt Clamp	99	592455	1	. Kit, Hose
16	587589	16	. Stud	100	14795	1	. Fitting
17	R11499	16	. Locknut	101	CLP0100112	4	. Clamp
18	296420W	16	. Hard Washer	102	227949	1	. Fitting
19	563470	1	. Elbow Weldment	103	15243	1	. Fitting
25	220794	1	. Fitting	104	224298	1	. Fitting
26	209191	1	. Fitting	105	242597	2	. Cable Tie
28	563204	16	. Spacer	106	18889W	4	. Capscrew
35	590616	2	. Fitting	107	221767W	8	. Hard Washer
36	229389	6	. Fitting	108	221771W	4	. Washer
38	* 587036	1	. Pressure Filter	109	221560W	4	. Capscrew
39	231296	2	. Clamp	110	R13811191	4	. Locknut
45	209067	1	. Fitting	111	Y17C-0616	4	. Capscrew
50	* 588609	1	. Manifold Accum Charge	112	258838	12'	. Trim, Edge
54	245334	1	. Indicator, Elec/Vis	113	YHGB 06	10'	. Hose Guard
55	578466	2	. Adapter	114	211551	1	. Fitting
56	* 243457	2	. Filter, Return	115	242599	2	. Cable Tie
61	581018	1	. Plate				
62	R13810999	2	. Capscrew				
67	R13811189	2	. Locknut				

\* See Separate Coverage

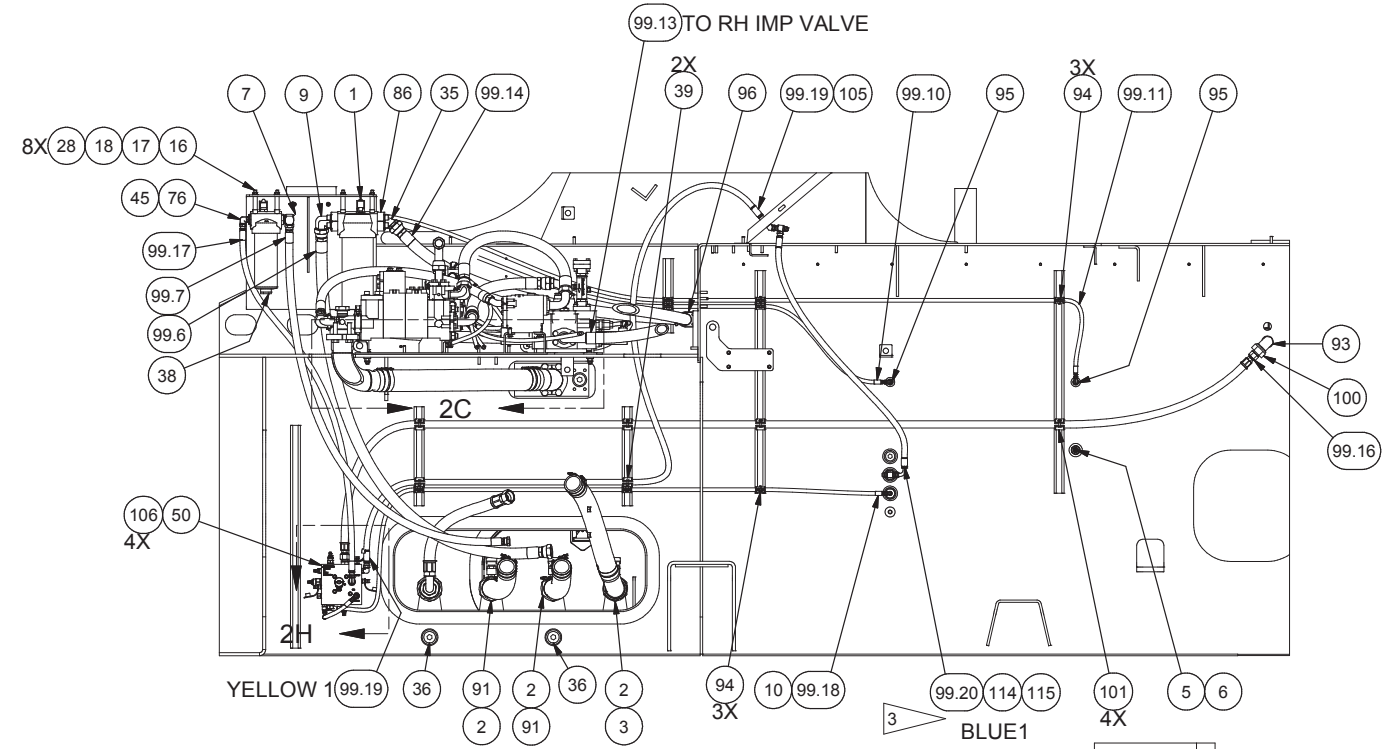
NOTES:

1. ITEM 112 & 113 ARE NOTE SHOWN. THESE ITEMS ARE TO BE USED TO PROTECT HOSES, WHEN PASSING HOSES THROUGH BULKHEAD OR DECK.
2. PARTS HAVE BEEN REMOVED IN SOME VIEWS FOR CLARITY.
3. REMOVE ELBOW FITTING ATTACHED TO BRAKE TANK LINE AND REPLACE WITH ITEM 114. INSTALL ITEM 114 IN EXISTING COUPLING. RETURN ELBOW FITTING TO STOCK.

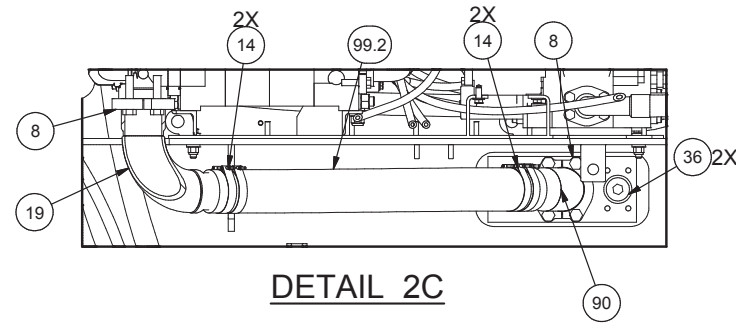




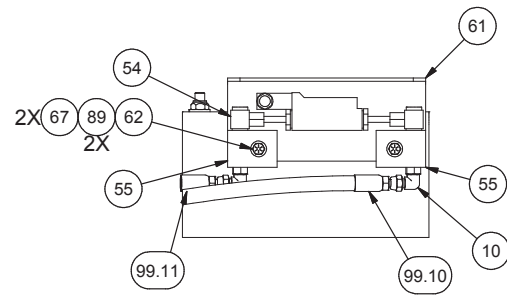
**SECTION 2A-2A**



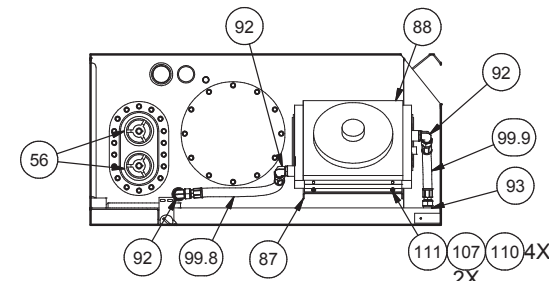
**SECTION 2B-2B**



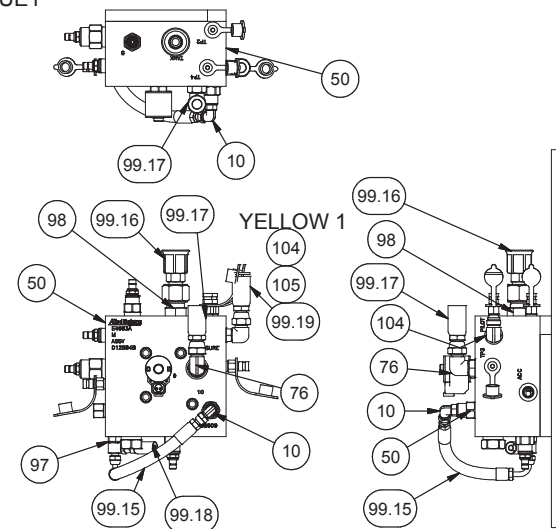
**DETAIL 2C**



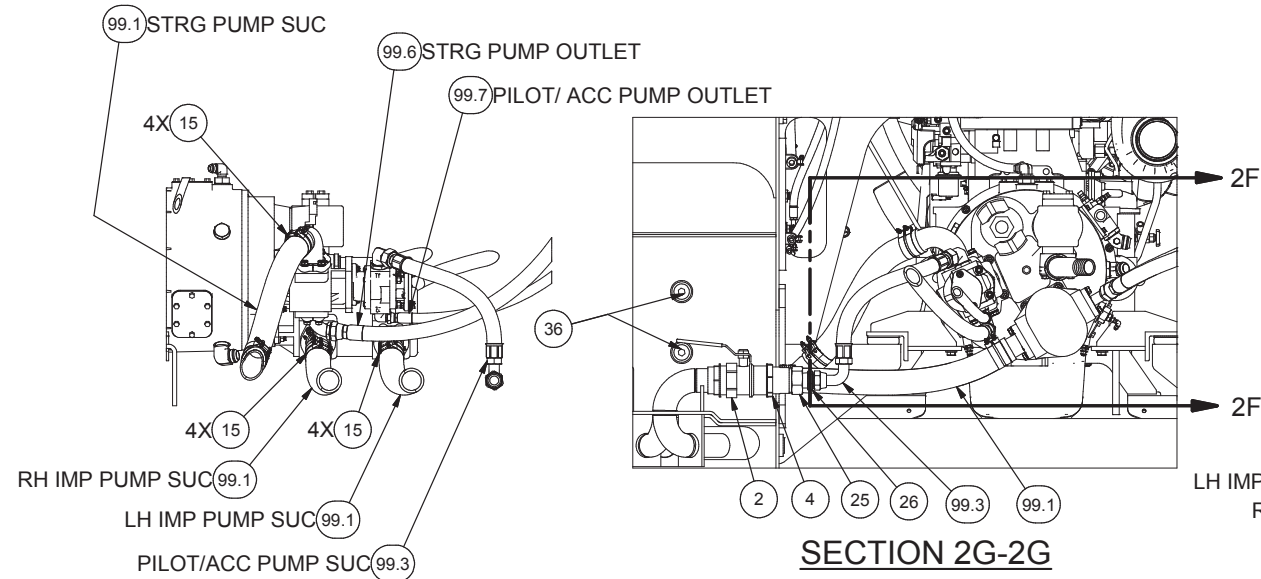
**SECTION 2D-2D**



**DETAIL 2E**



**DETAIL 2H**



**SECTION 2F-2F**

**SECTION 2G-2G**