
Axle Dual Wheel, Wet Disk Brake

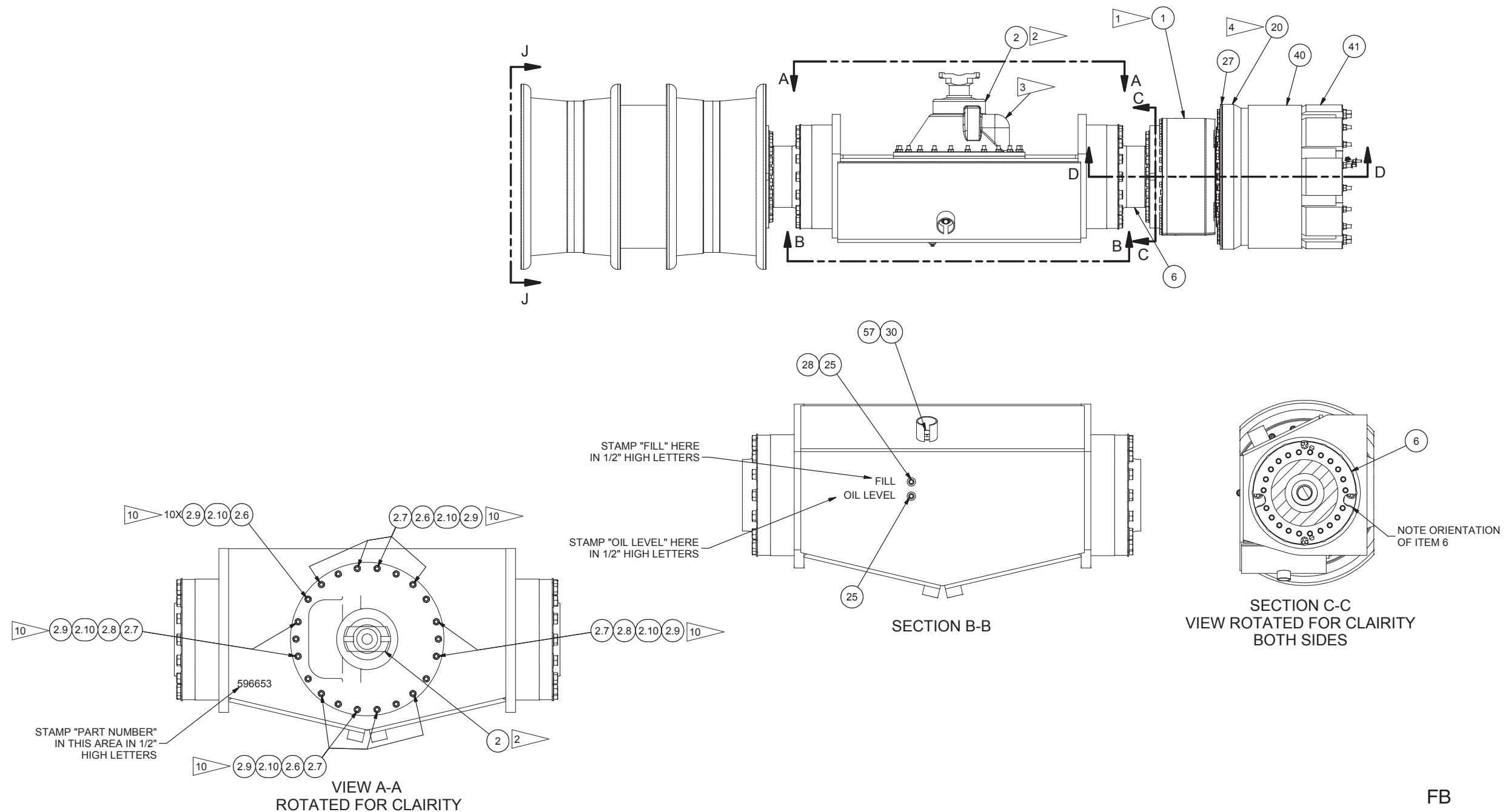
Axle Dual Wheel, Wet Disk Brake

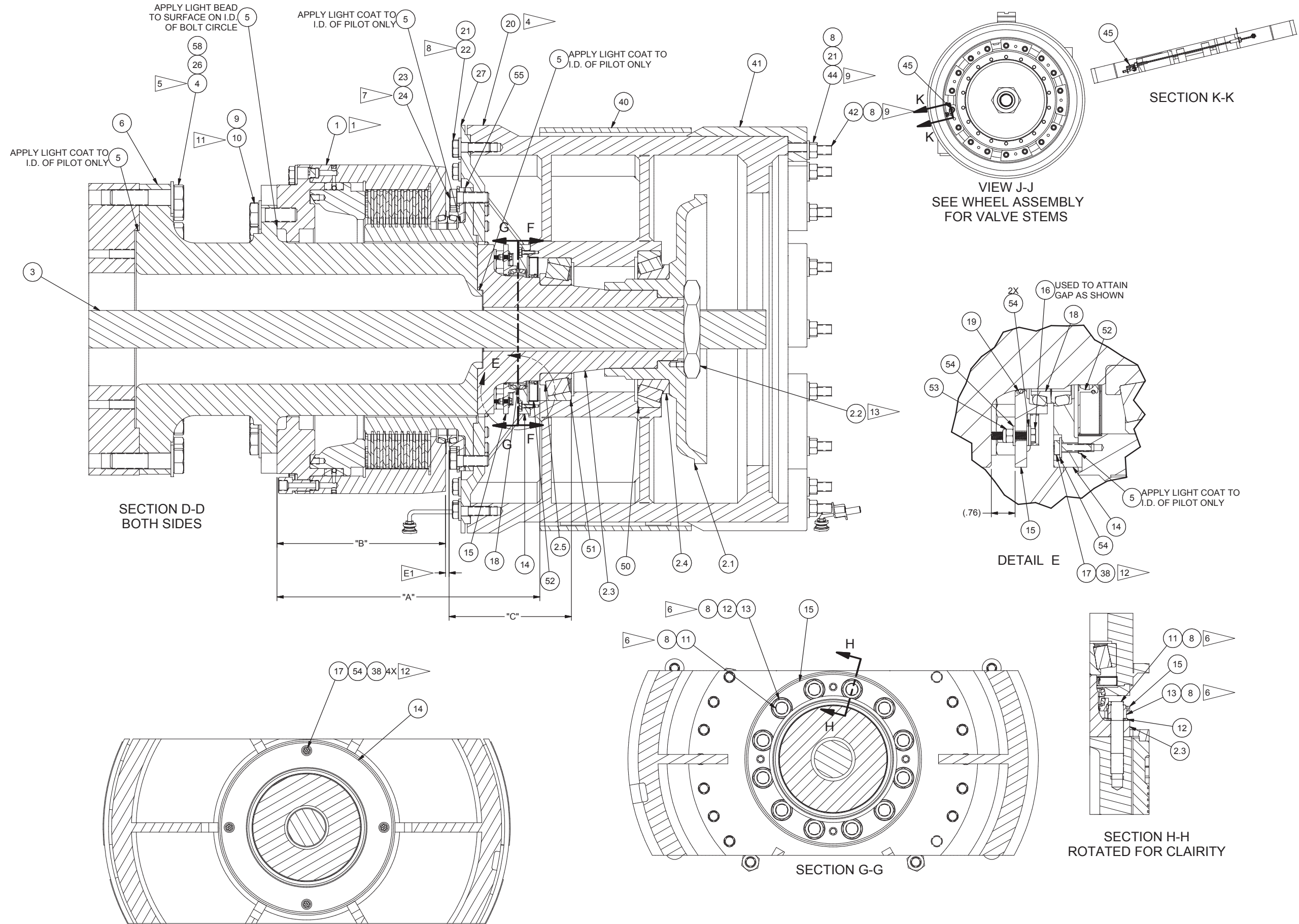
Item	Part No.	Qty	Description	Item	Part No.	Qty	Description
	591851		Axle, Dual Wheel				
1	* 584897	2	. Disc Brake, Wet	20	566338	2	. Hub Weldment, Ws Duals
2	* 249162	1	. Axle Kit	21	221777W	84	. Washer
2.1	r 216149	2	.. Hub, Internal Gear	22	221657W	48	. Capscrew
2.2	r 221728W	2	.. Nut, Hex	23	R13813326	56	. Hard Washer
2.3	r 248619	2	.. Spindle	24	218760	56	. Capscrew
2.4	r 201148	2	.. Bearing Cone	25	209916	2	. Fitting
2.5	r 216146	2	.. Bearing Cone	26	225851	32	. Hard Washer
2.6	r 214145	18	.. Stud, Carrier	27	591601	2	. Plate, Adapter Mounting
2.7	r 217874	12	.. Dowel, Tapered	28	242864	2 Gal	. Additive
2.8	r 214146	4	.. Stud, Carrier	30	200268	1	. Breather
2.9	r 207488	22	.. Washer	38	318702W	1 Btl	. Thread Lock-Med Strength
2.10	r 204133	22	.. Nut	40	566386	2	. Wheel Spacer Assembly
3	547338	2	. Axle Shaft	41	563937	18	. Clamp, Dual Wheel
4	00223911	32	. Capscrew	42	225466	36	. Stud
5	244260	1 Tube	. Sealant, Anaerobic	44	221716W	36	. Hex Nut
6	578276	2	. Axle Housing	45	570913	2	. Tab
8	222689	1 Btl	. Threadlock, Anaerobic	50	201143	2	. Bearing Cup
9	15137W	44	. Washer	51	216147	2	. Bearing Cup
10	245854	44	. Capscrew	52	216156	2	. Seal, Oil
11	257556	24	. Capscrew	53	R13811189	8	. Locknut
12	248620	24	. Hard Washer	54	R13812213	32	. Flat Washer
13	N/A	24	. Nut	55	576258	2	. Shim
14	578274	2	. Ring	57	18522	1	. Fitting
15	584846	2	. Ring	58	244264	1 Can	. Anti-Seize, Copper Grade
16	257558	8	. Capscrew				
17	R13801782	8	. Capscrew	NA	Not Applicable		
18	245412	2	. Seal, Duo-Cone				
19	113586W	2	. O-Ring				

* See Separate Coverage
r Reference

NOTES:

1. WET DISK BRAKE (ITEM 1) IS SPLIT APART AT THE SEAL RING TO MOUNT THE SPLINE HUB TO THE WHEEL HUB. THE OUTER PORTION OF THE BRAKE IS GENTLY SET BACK INTO THE HUB AND THE ENTIRE ASSEMBLY IS BOLTED INTO PLACE ON THE SPINDLE FLANGE.
2. AXLE KIT (ITEM 2) CONTAINS ITEMS WHICH ARE REFERENCED ITEM BUBBLES, SEE CLARK AXLE INSTALLATION INSTRUCTIONS. (PUBLICATIONS FORM 80-1041).
3. DIFFERENTIAL AND CARRIER MUST BE MOUNTED WITH RING GEAR ON THE LEFT SIDE OF PINION (INPUT SHAFT), AS VIEWED FROM THE INPUT DRIVE YOKE.
4. CLEAN AREA OF HUB ENCLOSED BY BRAKE DRIVER WELDMENT OF ANY LOOSE MATERIAL.
5. LUBE THREADS OF ITEM 4 W/ NEVER SEIZE (ITEM 58) & TORQUE TO 1200-1230 FT-LBS.
6. ANCHOR END OF STUD; APPLY SEVERAL DROPS OF LOCTITE 277 ALONG THE INTERNAL THREADS TO THE BOTTOM OF THE HOLE, INSTALL STUD AND TORQUE TO 200-230 FT-LBS, FOR NUT APPLY LOCTITE 277 & TORQUE NUT TO 682-750 FT-LBS; FOR NON-CURRENT CAPSCREW TORQUE TO 995-1000 FT-LBS.
7. USE LOCTITE 277, APPLY 360° BEAD TO 2nd THREAD OF BOTH MALE AND FEMALE THREADS. TORQUE ITEM 24 TO 475 - 500 FT-LBS
8. USE LOCTITE 277, TORQUE 300-330 FT-LBS.
9. USE LOCTITE 277 ON THE HUB TO STUD CONNECTION ONLY. TORQUE STUD ITEM 42 TO 150-160 FT-LBS. TORQUE ITEM 44 TO 300-325 FT-LBS.
10. PER FORM 80-1041; TIGHTEN TAPER DOWEL STUD NUTS FIRST, TORQUE STUD NUTS 242-250 FT-LBS
11. TORQUE ITEM 10 TO 682 - 750 FT-LBS
12. USE LOCTITE 242 (ITEM 38) ON ITEM 17 AND TORQUE TO 96 IN-LBS
13. SEE FORM 80-1041 FOR ROLLING TORQUE SPECIFICATION





ENGINEERING NOTES:
E1: "A"-"B"-"C"+2.5 = .326/157; SHIM 576263 HAS BEEN USED WHEN NECESSARY

FB