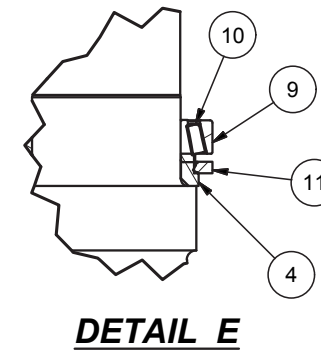
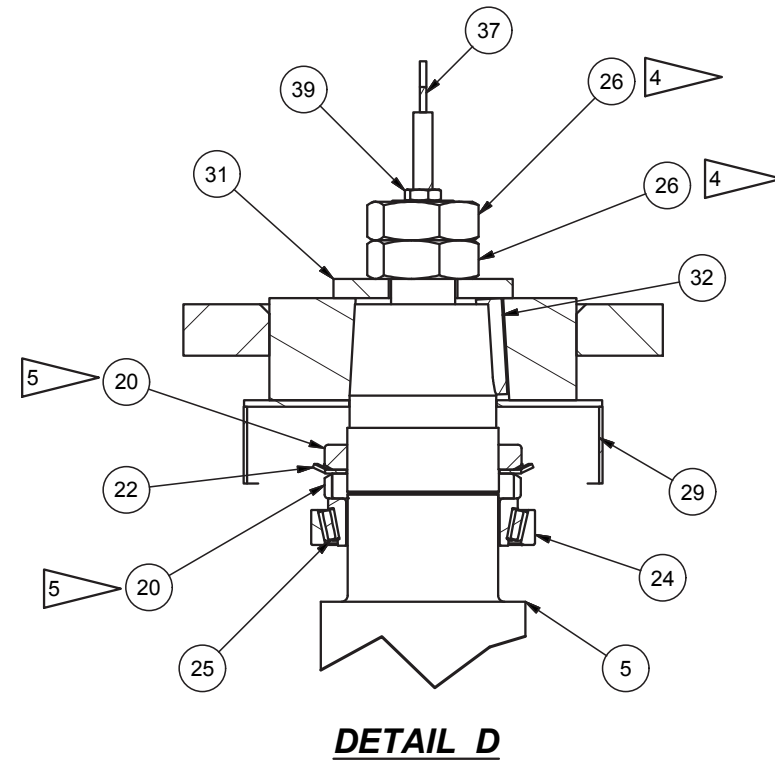
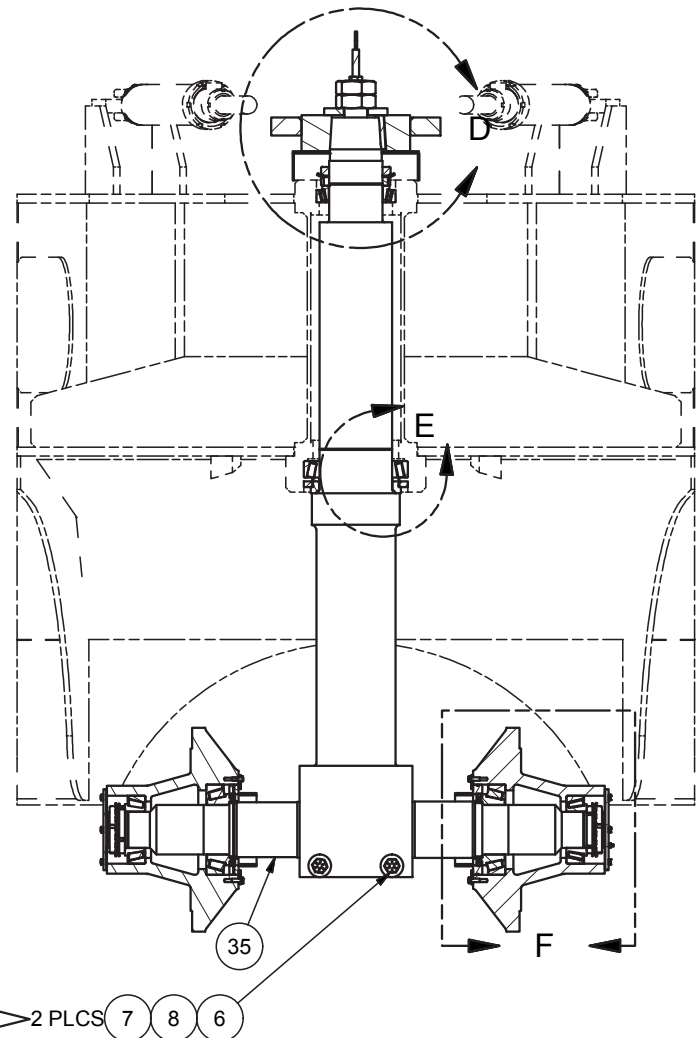
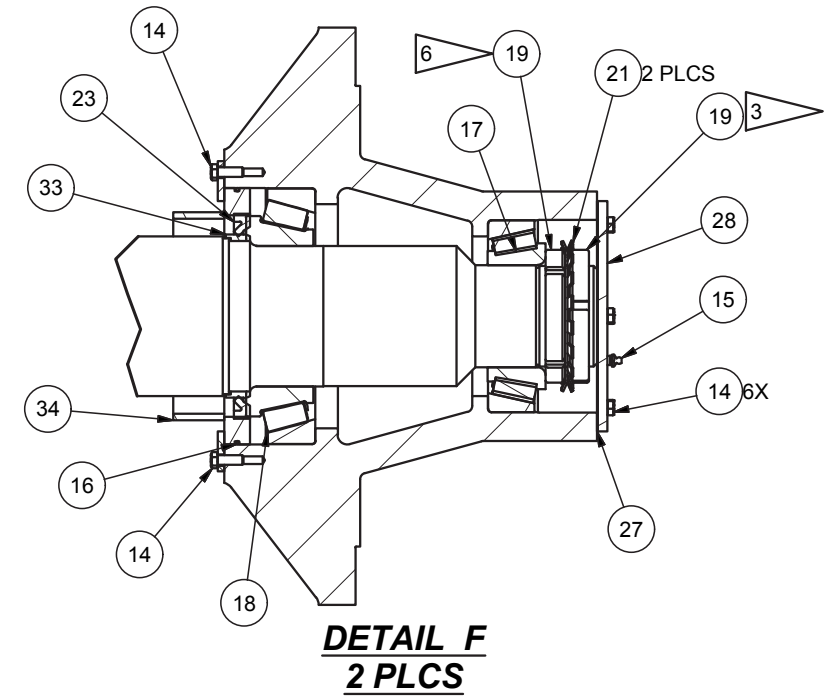
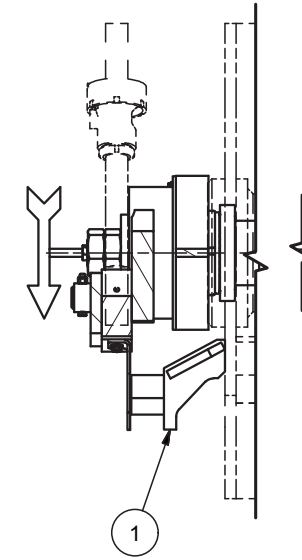
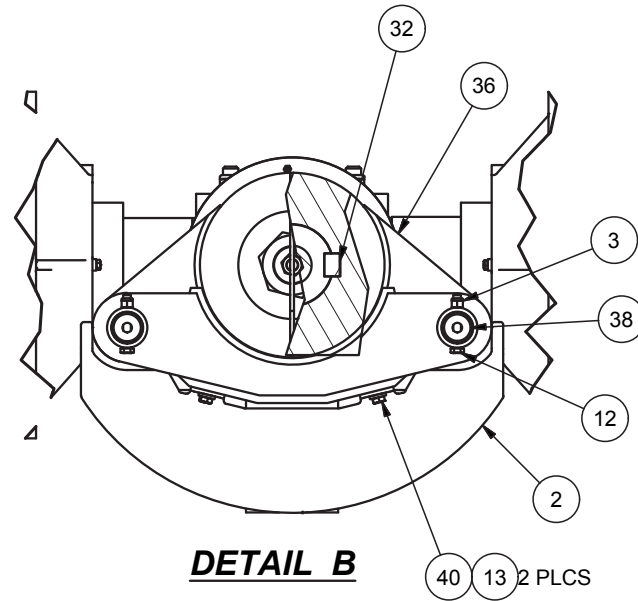
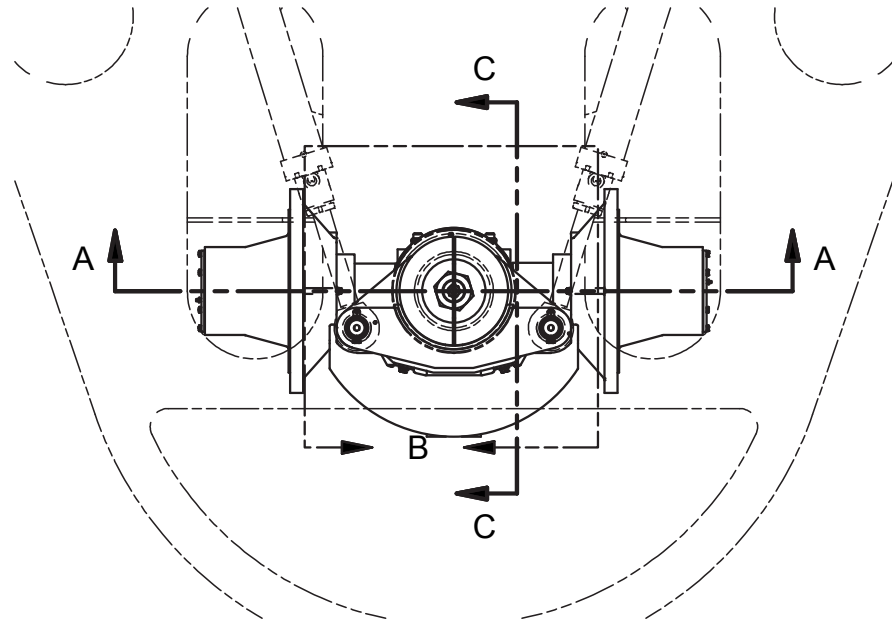

Tailpost Installation

Tailpost Installation W/Stop

Item	Part No.	Qty	Description	Item	Part No.	Qty	Description
	591360		Tailpost Installation W/Stop				
1	568843	1	. Stop Weldment, Strg	21	207507	4	. Lockwasher
2	591236	1	. Plate, Guard	22	207510	1	. Lockwasher
3	R13811193	2	. Locknut	23	208870	2	. Seal
4	568619	1	. Plate, Spacer	24	212198	1	. Bearing Cup
5	568618	1	. Tailpost, Mach	25	212199	1	. Bearing Cone
6	238913	2	. Capscrew	26	220221	2	. Jam Nut
7	225178	2	. Hard Washer	27	574679	2	. Gasket
8	234989	2	. Locknut	28	574678	2	. Cap, Dust
9	214471	1	. Bearing Cup	29	501248	1	. Cap, Dust
10	234204	1	. Bearing Cone	31	530618	1	. Washer
11	214464	1	. Seal	32	505370	1	. Key
12	R13811083	2	. Capscrew	33	508834	2	. Seal, Race
13	223690	6	. Flat Washer	34	508842	2	. Seal Retainer
14	Y17C-0616	16	. Capscrew	35	574677	1	. Axle, Tailfork
15	00191758	2	. Fitting, Lube	36	591240	1	. Arm, Tiller
16	203564	2	. O-Ring	37	533813	1	. Tailwheel Indicator
17	240839	2	. Bearing Cone	38	565013	2	. Pin
18	204603	2	. Bearing Cone	39	247008	1	. Jam Nut
19	207501	4	. Locknut	40	221563W	2	. Capscrew
20	207504	2	. Locknut				



- NOTES:**
- 1 LOCATE THE STEERING STOP SO THAT EACH STEERING CYLINDER HAS APPROXIMATELY 1/4" OF UNUSED CYLINDER STROKE WHEN RETRACTED. EACH EAR OF THE TILLER ARM SHOULD MAKE EQUAL CONTACT WITH THE STOP.
 - 2 AFTER THE AXEL HAS BEEN INSERTED INTO THE TAILPOST SO THAT IT STOPS AGAINST ITS LARGEST DIAMETER INSTALL HARDWARE, WASHER MUST BE INSTALLED UNDER NUT, TORQUE CAPSCREW TO 750-800 FT-LBS.
 - 3 TORQUE 1500-1800 FT-LBS
 - 4 TORQUE TO 800-1000 FT-LBS
 - 5 TORQUE TO 2400 FT-LBS
 - 6 SEE PROCEDURE 80-119 FOR TAILPOST INSTALLATION