

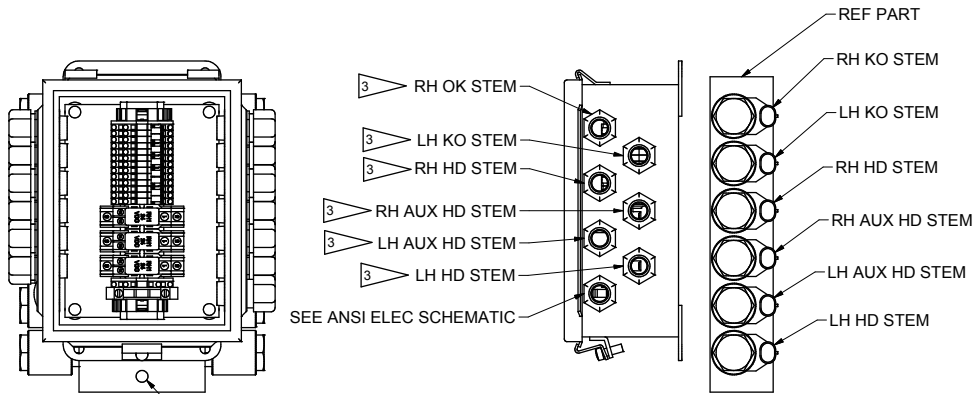
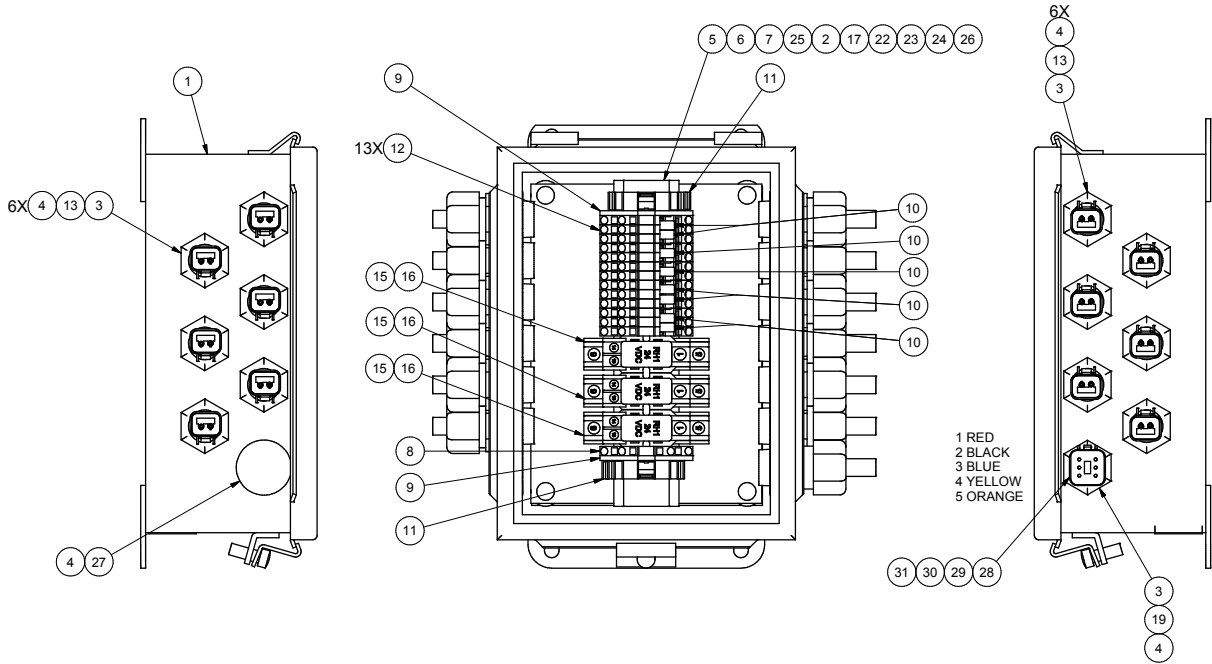
---

Junction Box Assembly

## Junction Box Assembly

Item	Part No.	Qty	Description	Item	Part No.	Qty	Description
	590976		Junction Box Assembly				
1	581039	1	. Box	13	590975	12	. Cord Assembly
2	26758	1	. Panel, Back	15	238891	3	. Relay
3	220577	13	. Connector, Cord	16	22632	3	. Relay Socket
4	27054	14	. Ring Nut	17	235842	6	. Clamp, Holddown
5	22628	7IN	. Rail, Din	19	587319	2FT	. Cord
6	00100738	2	. Machine Screw	22	22635	8	. Diode
7	238596	2	. Nut	23	203192	8	. Terminal
8	239317	1	. Terminal Block	24	239734	4FT	. Tube, Heat-Shrink
9	232238	1	. End Plate	25	R13811437	2	. Flat Washer
10	232239	8	. Jumper	26	26758	1	. Panel, Back
11	241761	2	. End Stop	27	227023	1	. Plug, Knockout
12	232237	13	. Terminal Block	28	2310618	1	. Plug - End
				29	243236	5	. Socket
				30	249158	1	. Wedge, Lock
				31	219288	1	. Plug, Seal

# Junction Box Assembly

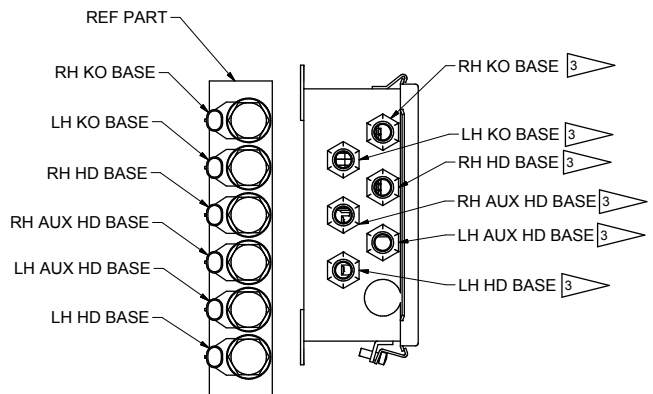


NOTE: ORIENTATION OF BOLT PATTERN

CONNECT WIRES ACCORDINGLY

NOTES:

1. SEE ANSI ELECTRICAL SCHEMATIC FOR CONNECTIONS.
2. ARRANGE CORD ASSEMBLY AS SHOWN.
3. LABEL ON INSIDE OF BOX



---

INTENTIONALLY BLANK