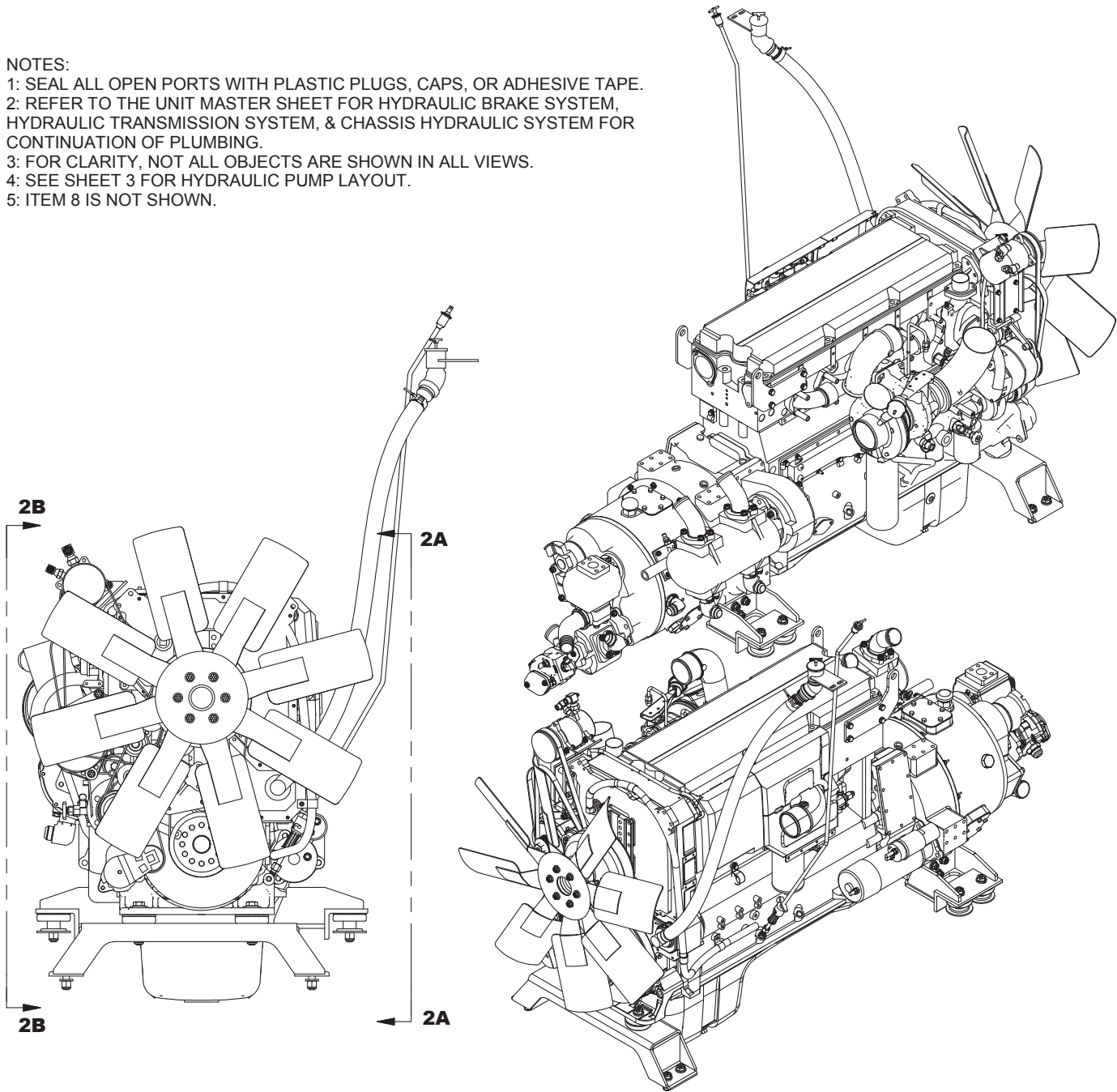


Power Unit

NOTES:

- 1: SEAL ALL OPEN PORTS WITH PLASTIC PLUGS, CAPS, OR ADHESIVE TAPE.
- 2: REFER TO THE UNIT MASTER SHEET FOR HYDRAULIC BRAKE SYSTEM, HYDRAULIC TRANSMISSION SYSTEM, & CHASSIS HYDRAULIC SYSTEM FOR CONTINUATION OF PLUMBING.
- 3: FOR CLARITY, NOT ALL OBJECTS ARE SHOWN IN ALL VIEWS.
- 4: SEE SHEET 3 FOR HYDRAULIC PUMP LAYOUT.
- 5: ITEM 8 IS NOT SHOWN.



## Power Unit

Item	Part No.	Qty	Description	Item	Part No.	Qty	Description
	<b>588094</b>		<b>Power Unit</b>				
1	* 588481	1	. Engine	71	201568	12	. Lockwasher
2	588416	1	. Engine Weldment, Front	72	221666W	4	. Capscrew
3	* 256295	1	. Converter	73	245757	2	. Stud
4	257099	1	. Kit, Flexplate	74	234497	6	. Vibration Dampener
5	580504	2	. Engine Mount Weldment, Rear	75	221563W	6	. Capscrew
6	* 580644	1	. Engine Oil Fill	77	578361	12	. Flat Washer
7	589087	1	. Dipstick & Housing Assembly	81	585354	1	. Bracket Weldment
8	NS 589561	1	. Wire Harness	87	R667288	1	. Hose End
10	* 589228	1	. Harness	88	579325	2	. Lifting Eye
12	246908	1	. Sensor, Temp	89	293647W	12	. Capscrew
13	574132	1	. Plate, Flange	90	233477	12	. Lockwasher
15	* 245520	1	. Pump, Hydraulic	93	209578	9	. Clamp
16	589113	1	. Pump	95	579536	1	. Bar, Mounting
	589734	1	. Seal Kit	96	236805	10	. Capscrew
17	* 245519	1	. Pump, Tandem	97	R13801005	13	. Lockwasher
18	539968	1	. Sleeve, Pump	98	R13810989	2	. Capscrew
19	212492	1	. Cover	99	223871	2	. Lockwasher
20	226184	2	. Gasket	103	243553	1	. Fitting
21	505499	3	. Gasket	107	229301	1	. Relay
22	589105	1	. Fitting, Adapter	108	221763W	2	. Washer
23	202889	1	. Switch, Oil Press	115	220095	1	. Fitting
24	247072	3	. Fitting	118	248624	1	. Fitting
25	586910	8	. Capscrew	119	R13809366	4	. Capscrew
26	Y17C-1272	2	. Capscrew	120	296418W	4	. Hard Washer
27	221777W	16	. Washer	121	R13812484	4	. Lockwasher
28	R13811196	10	. Locknut	122	Y17C-0624	4	. Capscrew
29	209181	1	. Fitting	124	249309	1	. Compressor
30	221771W	18	. Washer	128	256249	1	. Belt, Serpentine
31	R13812516	14	. Lockwasher	129	585310	1	. Fitting
32	Y17C-1028	10	. Capscrew	143	240733	1	. Breather, Air
33	R13811435	10	. Hard Washer	146	240734	1	. Check Valve
34	R13809066	10	. Lockwasher	147	209510	1	. Fitting
35	237008	2	. Shutoff Valve	152	211693	3	. Fitting
36	209506	2	. Fitting	156	19920	1	. Fitting
37	249393	2	. Mount, Isolator	162	259001	1	. Fitting
38	R13801813	2	. Capscrew	163	259002	1	. Fitting
41	254445	3	. Fitting	164	R10663	1	. O-Ring
44	R13811193	8	. Locknut	165	R10664	1	. O-Ring
46	209420	1	. Fitting	167	209714	1	. Fitting
49	221767W	10	. Washer	168	2511276	1	. Fitting
52	221499W	2	. Capscrew	170	209500	1	. Fitting
54	258868	1	. Fitting	171	R14038	1	. Coupler, Male
55	258869	1	. Fitting	172	296128W	3	. Jam Nut
56	203519	1	. O-Ring	173	256327	1	. Fan
58	R13811082	4	. Capscrew	175	247256	1	. Spacer
59	223909	3	. Lockwasher	176	15011W	6	. Jam Nut
62	209619	1	. Fitting	177	R13808111	2	. Clip, Insulated
67	11767	3	. Kit, Split Flange	179	R13811191	6	. Locknut
68	23390	3	. Kit, Split Flange	180	Y17C-1236	4	. Capscrew
	203523	1	. O-Ring	181	R13811086	6	. Capscrew
	209539	2	. Clamp Half	182	221758	2	. Fitting
70	R13801834	12	. Capscrew	183	247257	1	. Spacer

\* See Separate Cover  
NS Not Shown

