

**LEGEND**

- = DEDICATED GROUND TERM. BLOCK
- = CHASSIS GROUND
- = TERM. BLOCK
- = TERMINAL BLOCK CONNECTION
- = 4 TERMINAL BLOCK
- = MANUAL RESET CIRCUIT BREAKER
- = F/M CONNECTION
- = DEUTSCH F/M CONNECTION
- = METRI-PAK F/M CONNECTION
- = WEATHER PACK F/M CONNECTION

**CONSOLE**

250448 LED 4-TERM. BLOCK

238891 SPDT RELAY

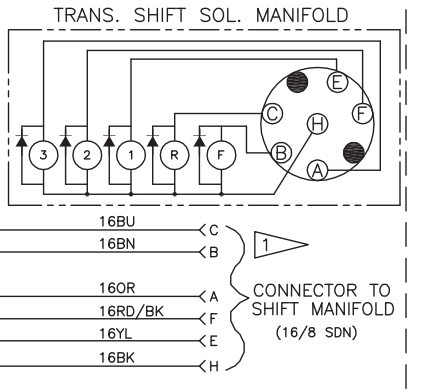
**RELAY PANEL**

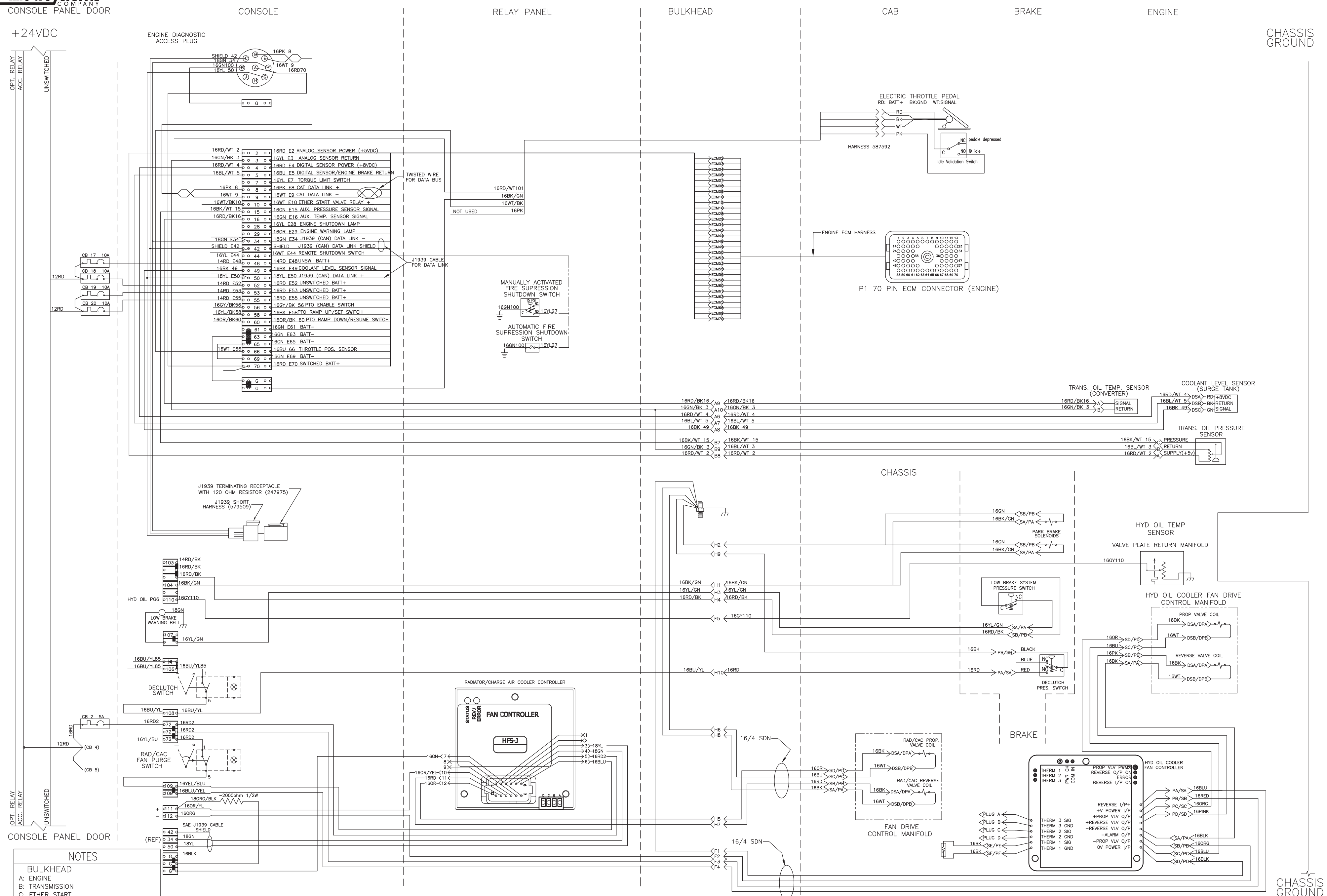
28287 DPDT RELAY

232908 DPDT RELAY

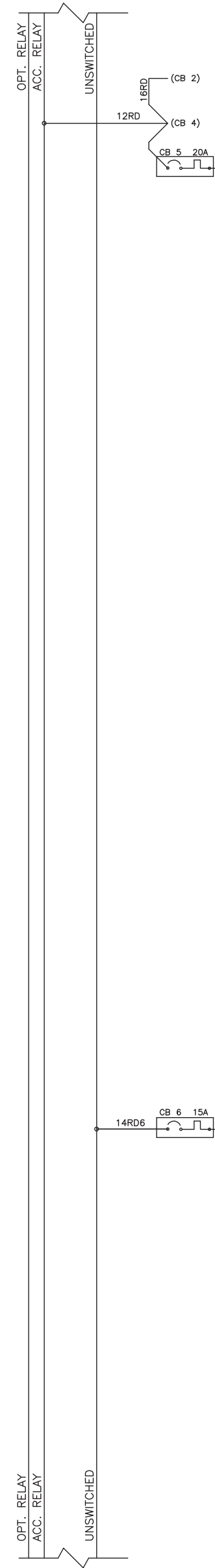
229301 SOLENOID RELAY

REFERENCE: 579427 TRANS SHIFT HARNESS; SEE M/S FOR SHIFTER LOCATION OPTION; FOR CD/CHD WITH SHIFTER MOUNTED TO LEFT OF OPERATOR, ON CONSOLE; WIRE AS SHOWN FOR CD/CHD WITH SHIFTER COLUMN MOUNTED WIRE: BLUE TO TERM. B BROWN TO TERM. C





CONSOLE PANEL DOOR  
+24VDC



CONSOLE

OVERHEAD PANEL

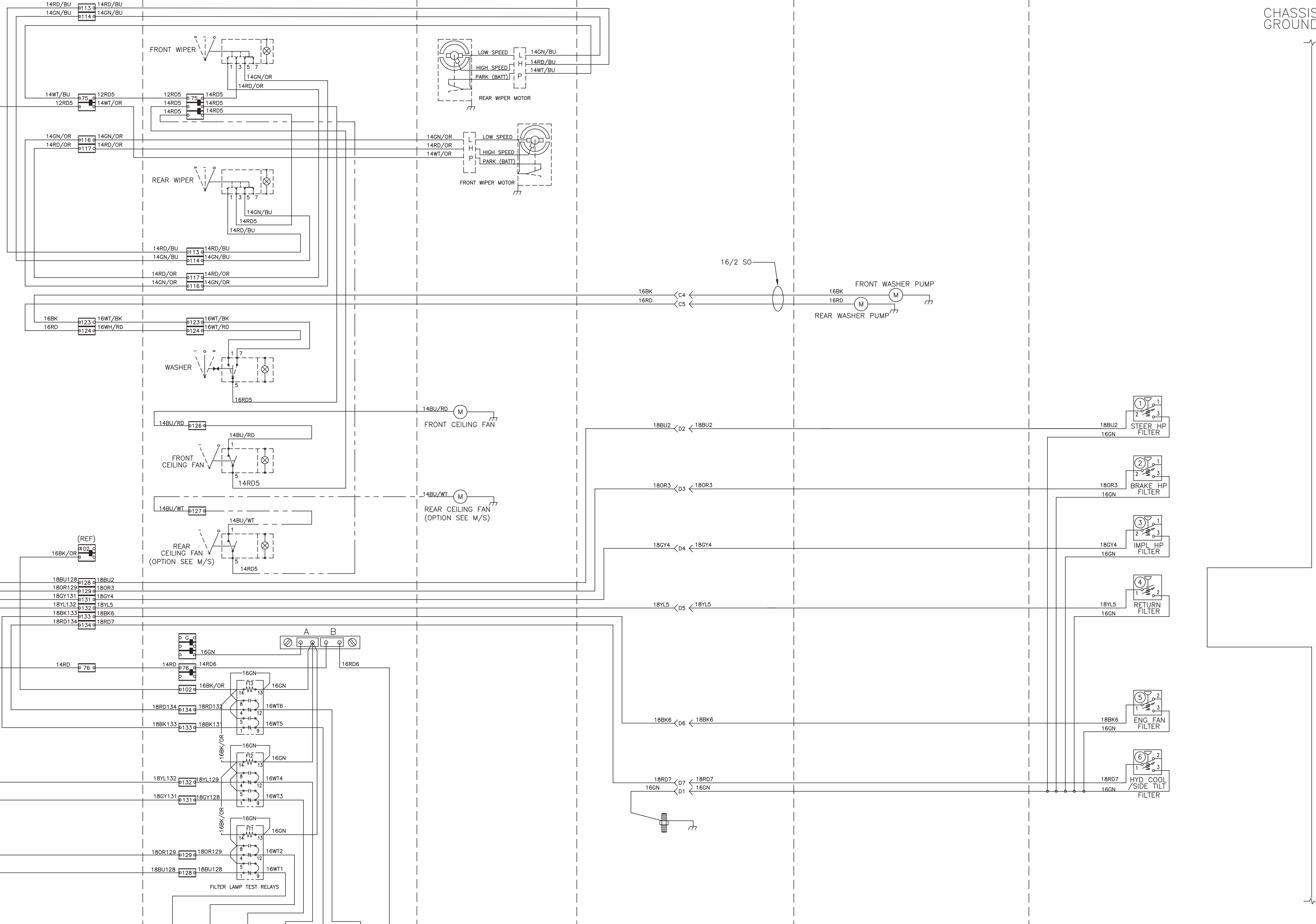
CAB

BULKHEAD

CHASSIS

MAIN VALVE PLATE

CHASSIS GROUND



CONSOLE PANEL DOOR

CONSOLE

CAB

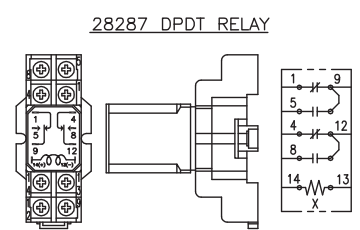
BULKHEAD

CHASSIS

MAIN VALVE PLATE

CHASSIS GROUND

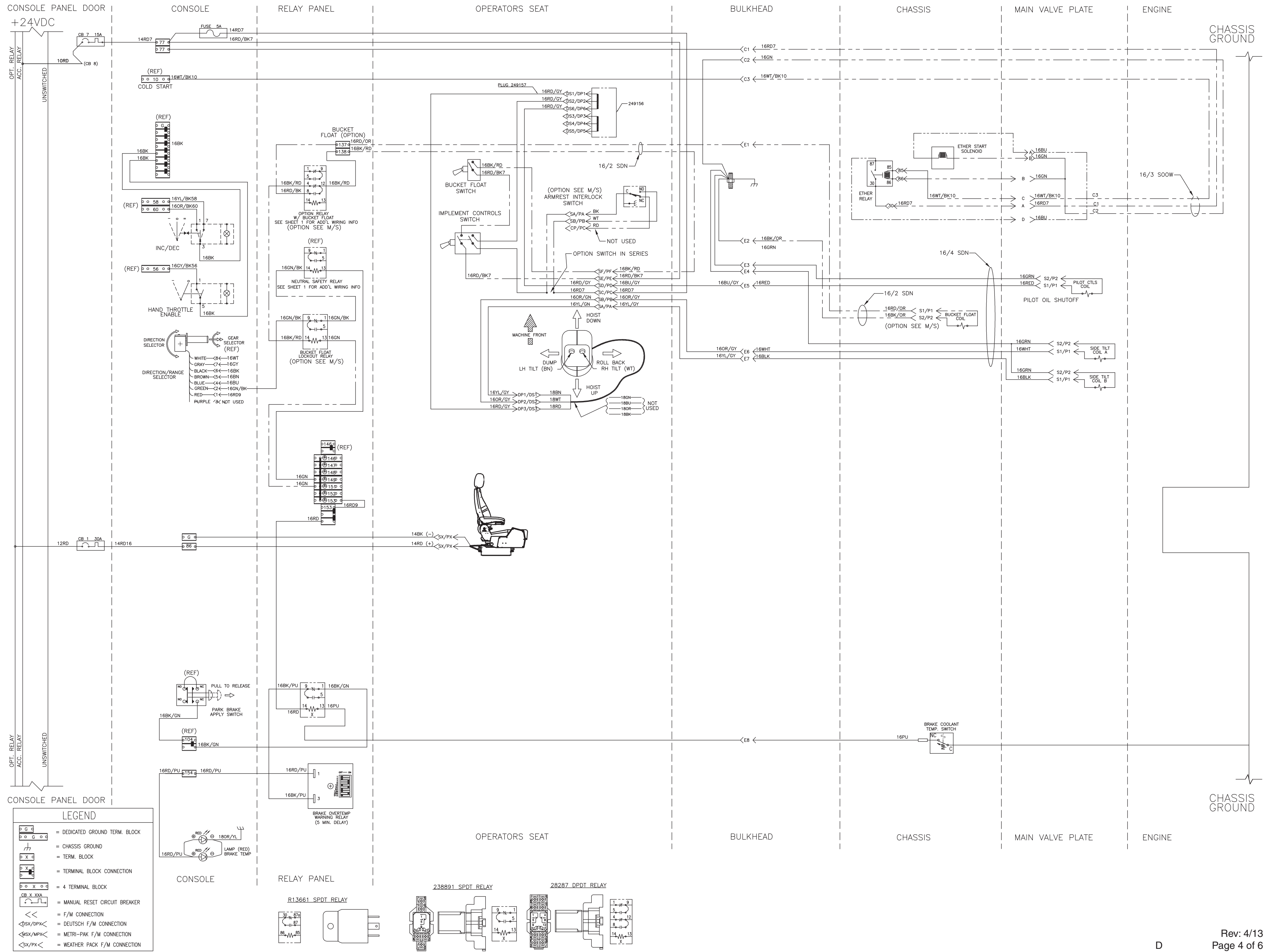
LEGEND	
	= DEDICATED GROUND TERM. BLOCK
	= CHASSIS GROUND
	= TERM. BLOCK
	= TERMINAL BLOCK CONNECTION
	= 4 TERMINAL BLOCK
	= MANUAL RESET CIRCUIT BREAKER
	= F/M CONNECTION
	= DEUTSCH F/M CONNECTION
	= METRI-PAK F/M CONNECTION
	= WEATHER PACK F/M CONNECTION

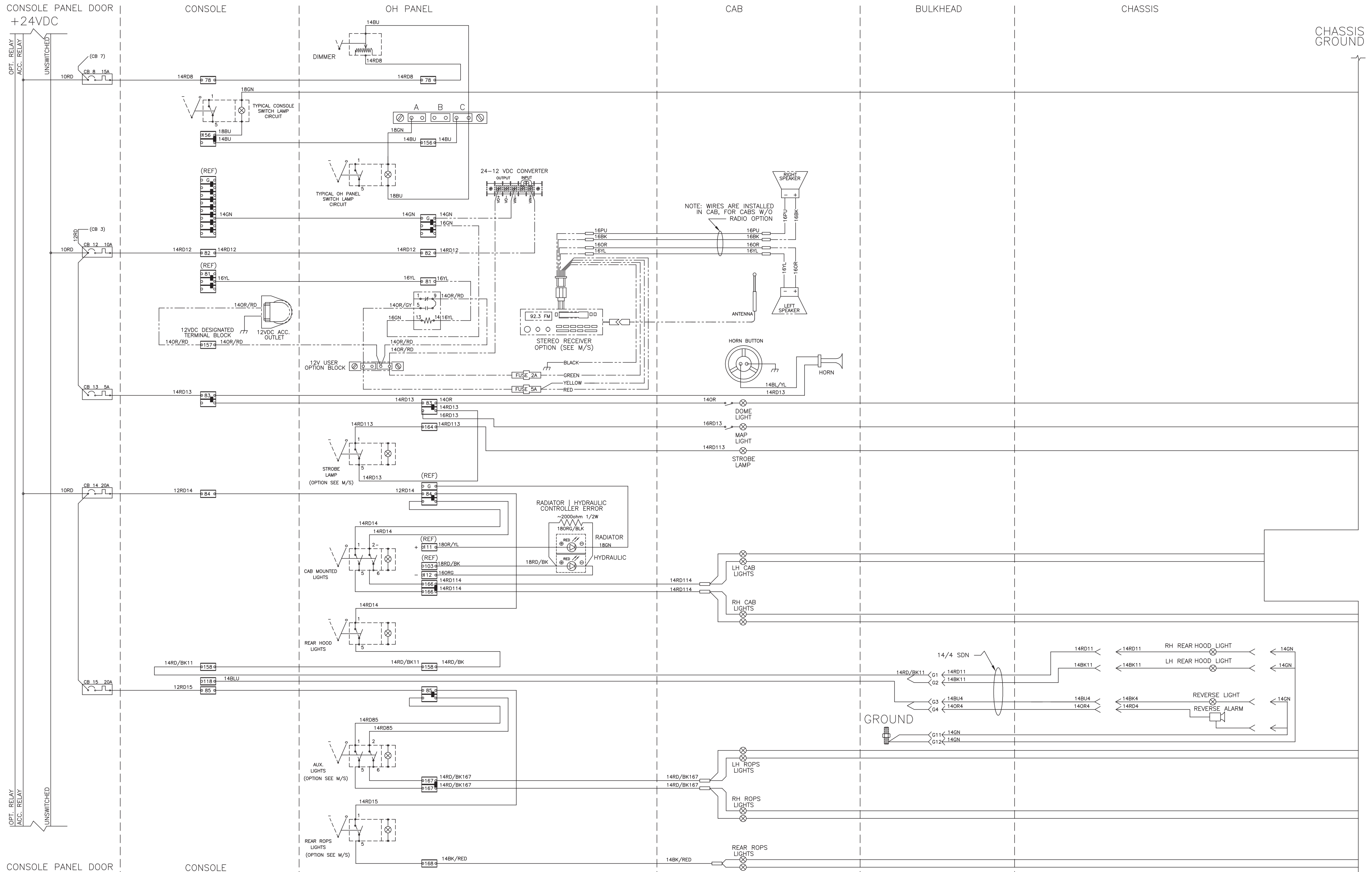


OVERHEAD PANEL

229882 TERMINAL BLOCK

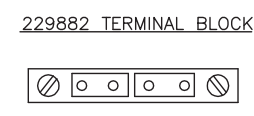
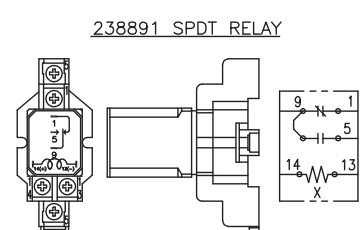




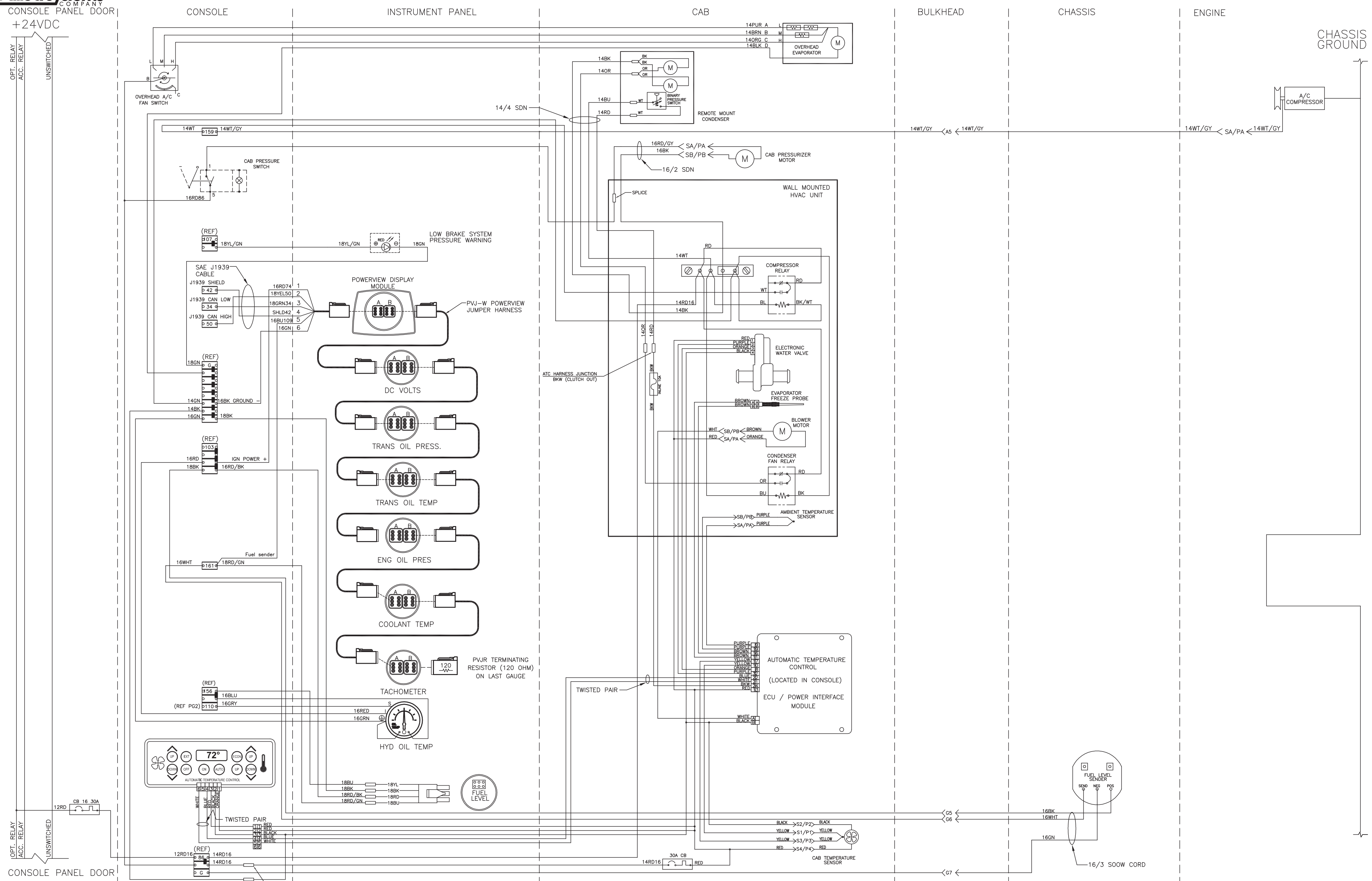


**LEGEND**

	= DEDICATED GROUND TERM. BLOCK
	= CHASSIS GROUND
	= TERM. BLOCK
	= TERMINAL BLOCK CONNECTION
	= 4 TERMINAL BLOCK
	= MANUAL RESET CIRCUIT BREAKER
	= F/M CONNECTION
	= DEUTSCH F/M CONNECTION
	= METRI-PAK F/M CONNECTION
	= WEATHER PACK F/M CONNECTION



OH PANEL



**LEGEND**

	= DEDICATED GROUND TERM. BLOCK
	= CHASSIS GROUND
	= TERM. BLOCK
	= TERMINAL BLOCK CONNECTION
	= 4 TERMINAL BLOCK
	= MANUAL RESET CIRCUIT BREAKER
	= F/M CONNECTION
	= DEUTSCH F/M CONNECTION
	= METRI-PAK F/M CONNECTION
	= WEATHER PACK F/M CONNECTION

