

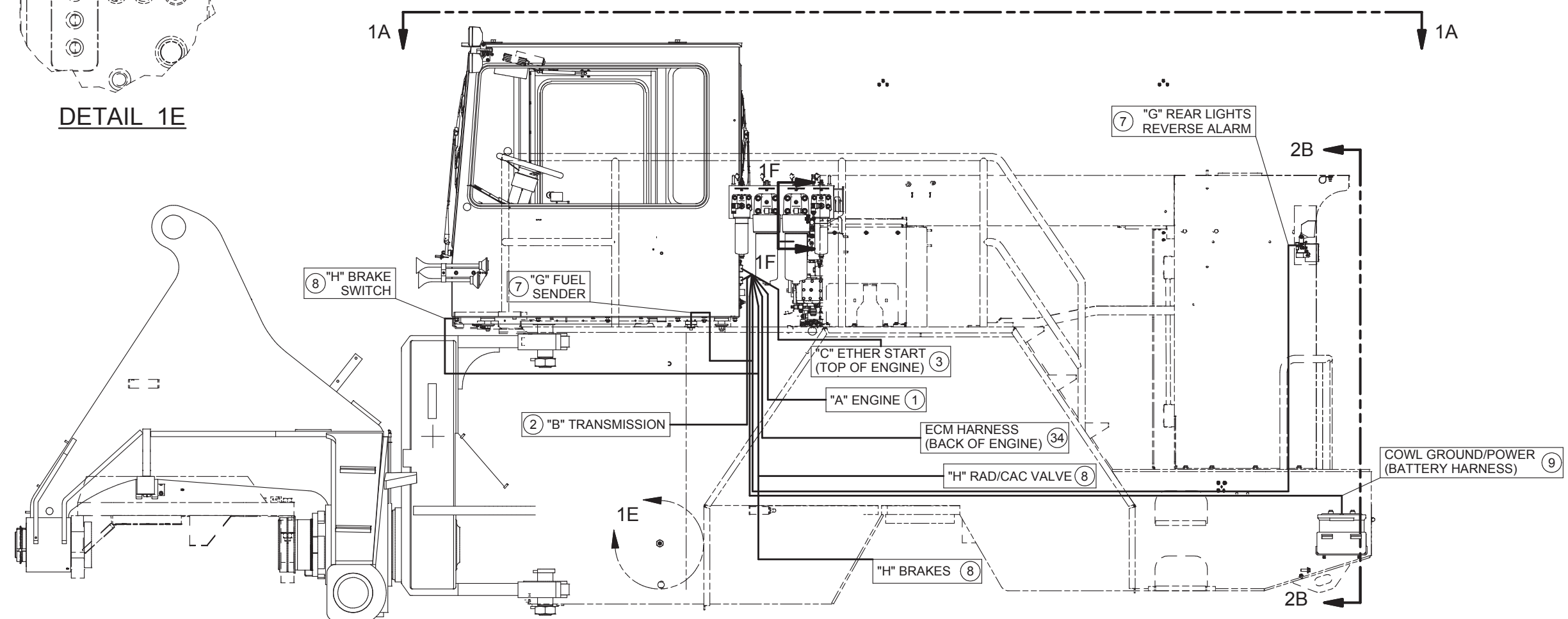
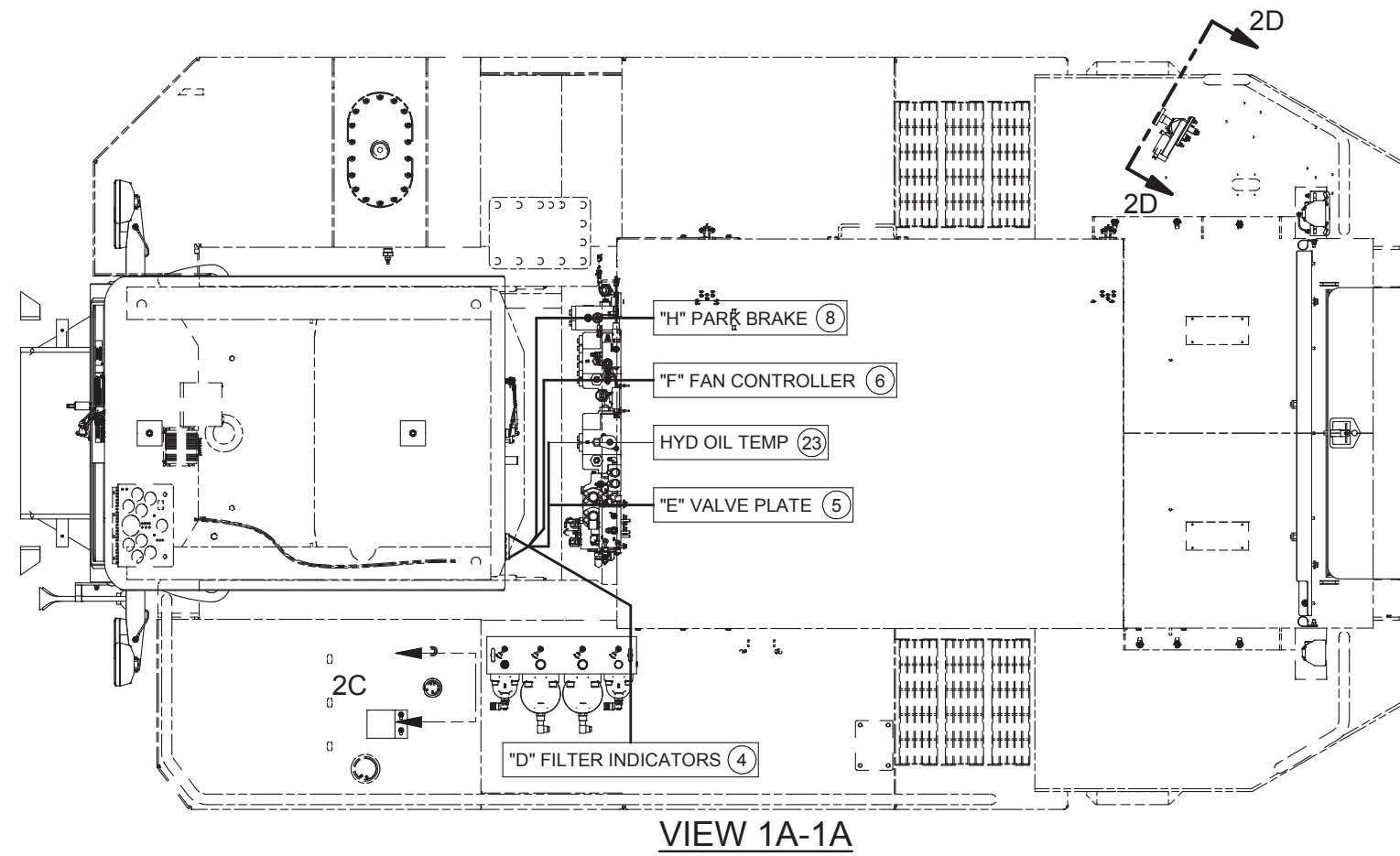
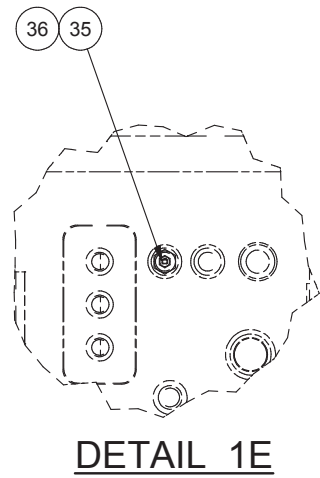
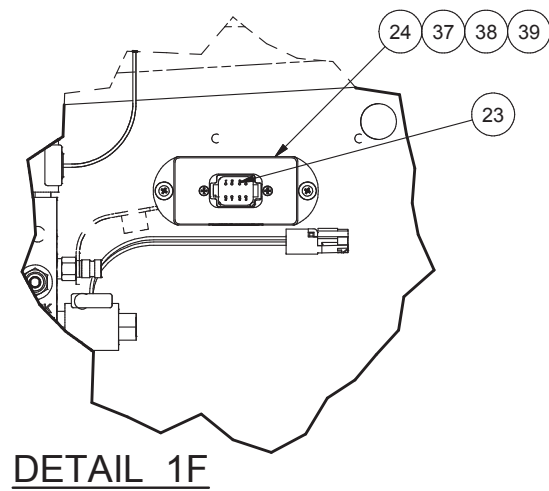
---

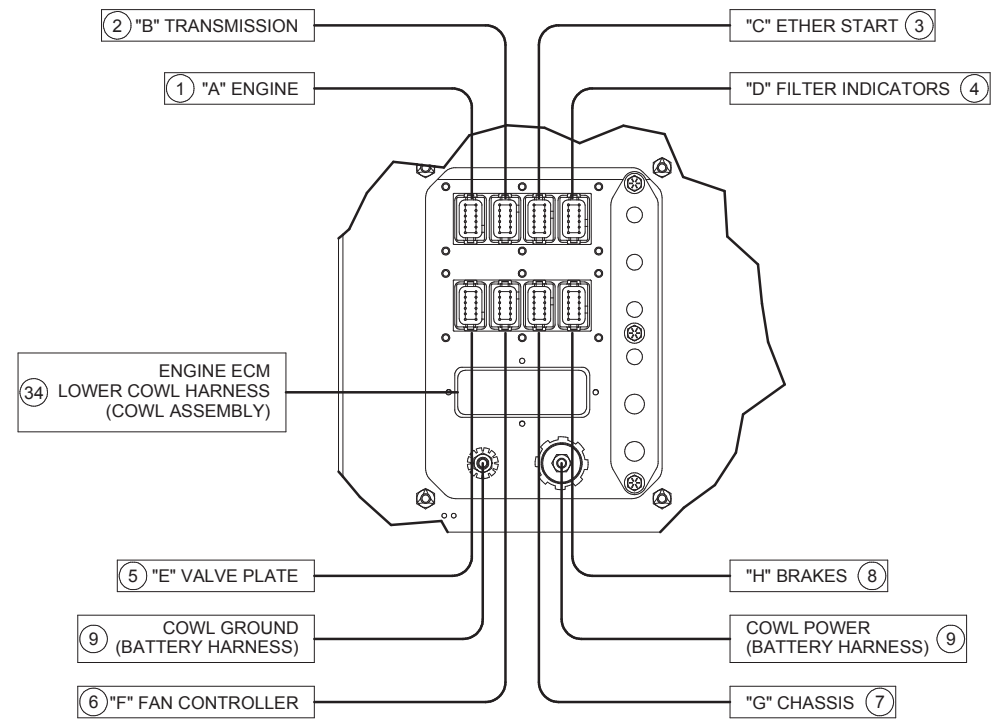
Wiring Assembly

## Wiring Assembly

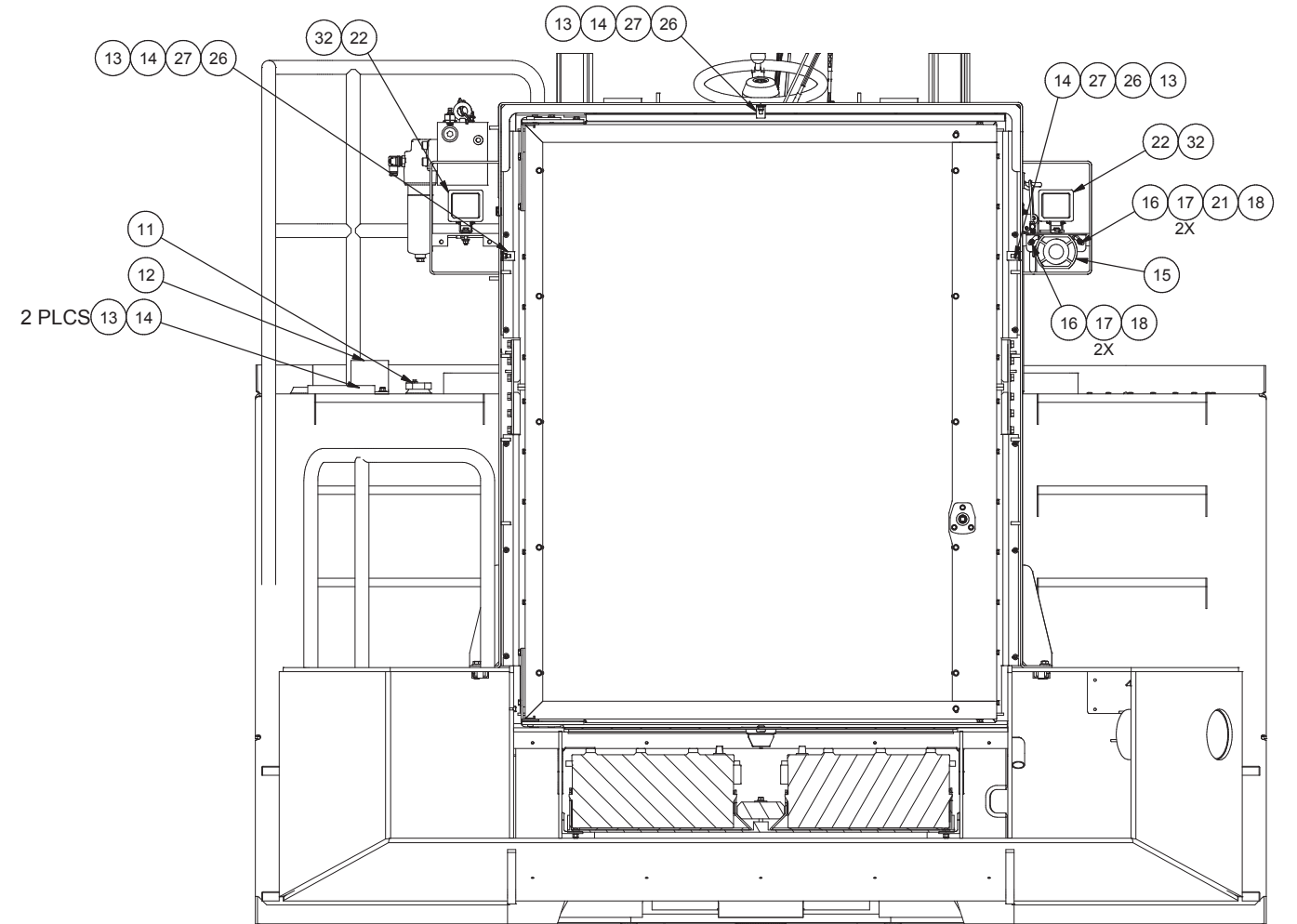
Item	Part No.	Qty	Description	Item	Part No.	Qty	Description
	<b>588013</b>		<b>Wiring Assembly</b>				
1	588879	1	. Wire Harness "A", Engine	21	228350	1	. Terminal Ring
2	588880	1	. Wire Harness "B", Trans	22	259080	2	. Floodlight
3	588893	1	. Wire Harness "C", Ether Start	23	596619	1	. Wire Harness, Hyd Temp Sensor
4	588894	1	. Wire Harness "D", Filter Ind	24	592607	1	. Transmitter, Hyd Temp
5	589857	1	. Wire Harness "E", Valve Plate	25	596169	1	. Switch, Battery Disconnect
6	588896	1	. Wire Harness "F", Fan Controller	26	209700	3	. Clamp
7	589859	1	. Wire Harness "G", Chassis	27	221314	3	. Stud, Weld
8	589858	1	. Wire Harness "H", Brakes	28	R13811015	2	. Capscrew
9	585679	1	. Battery Harness	29	R13802914	4	. Hard Washer
10	* 252170	28'	. Cable	30	R13811190	2	. Locknut
11	596907	1	. Sending Unit	31	220776	3	. Splateice, Butt
12	560516	1	. Bracket	32	203341	2	. Terminal Ring
13	221767W	11	. Washer	33	* 211790	5'	. Spirap
14	R13811191	11	. Locknut	34	589907	1	. Wire Harness
15	218755	1	. Alarm, Reverse	35	251424	1	. Sensor, Temp
16	R13810993	8	. Capscrew	36	586898	1	. Fitting
17	221763W	8	. Washer	37	R13811438	2	. Flat Washer
18	R13811189	8	. Locknut	38	238437	2	. Nut, Esna
19	221963	1	. Terminal	39	220314W	2	. Screw
20	221964	1	. Terminal				

\* Not Illustrated

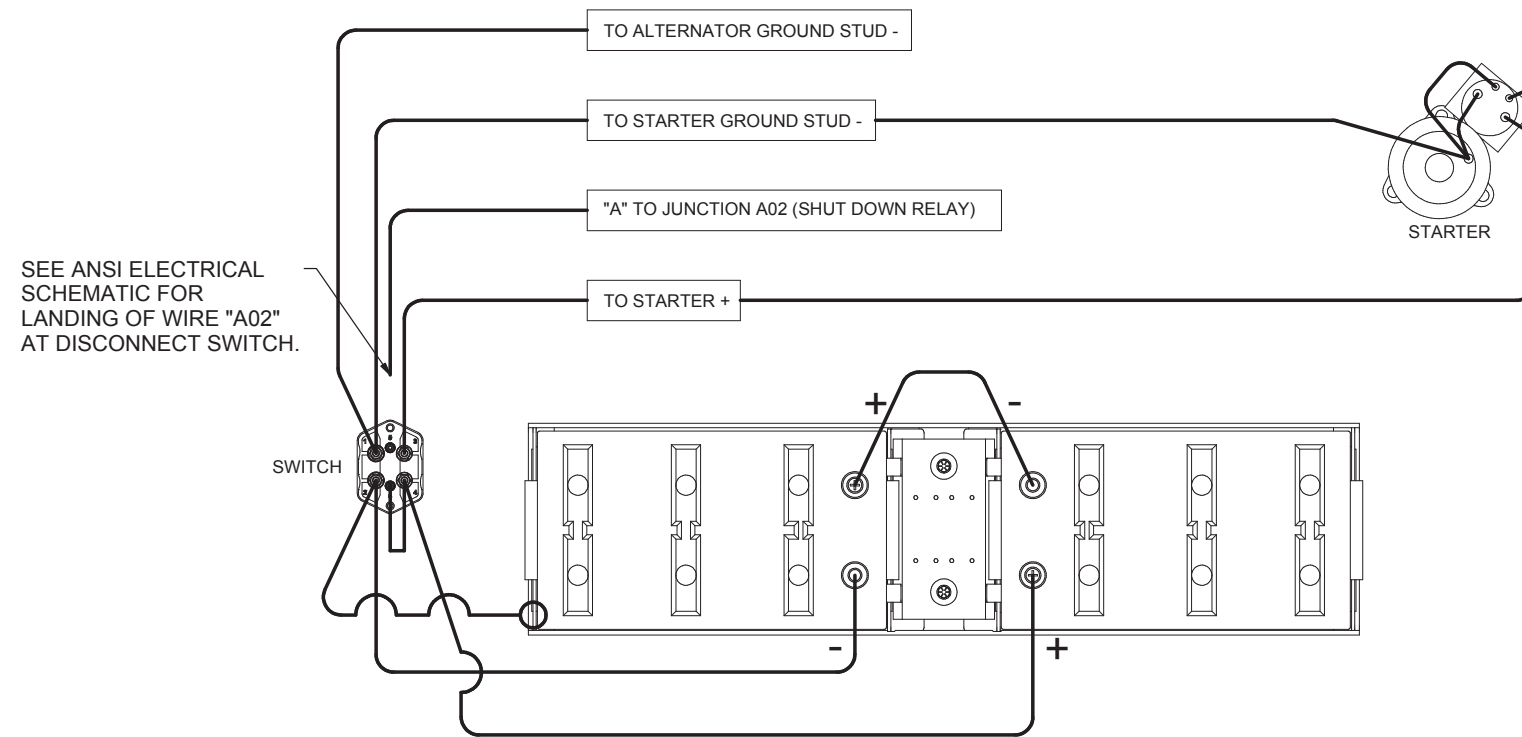




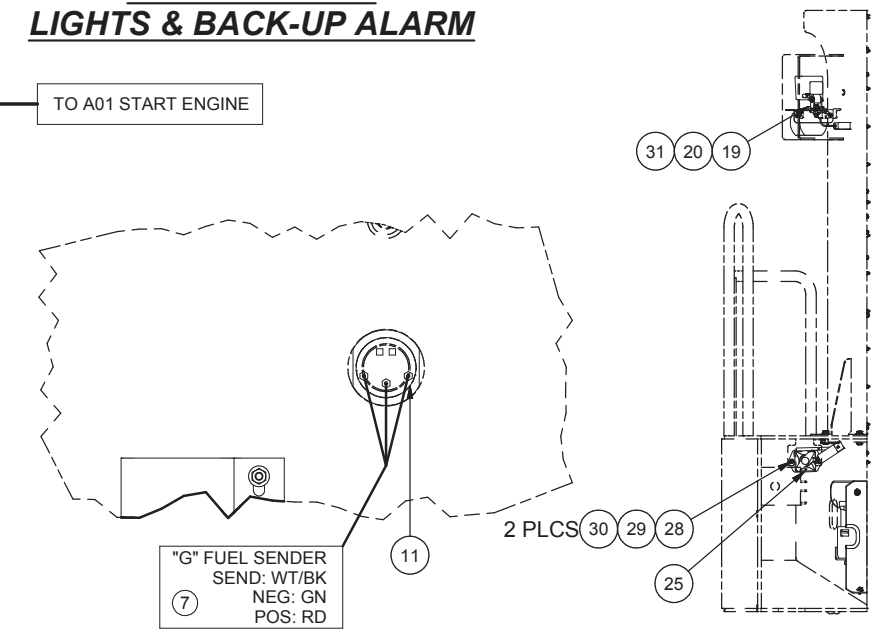
**CAB HARNESS**



**SECTION 2B-2B  
LIGHTS & BACK-UP ALARM**



**BATTERIES**



**DETAIL 2C  
FUEL SENDER**

**SECTION 2D-2D  
BATTERY SWITCH**