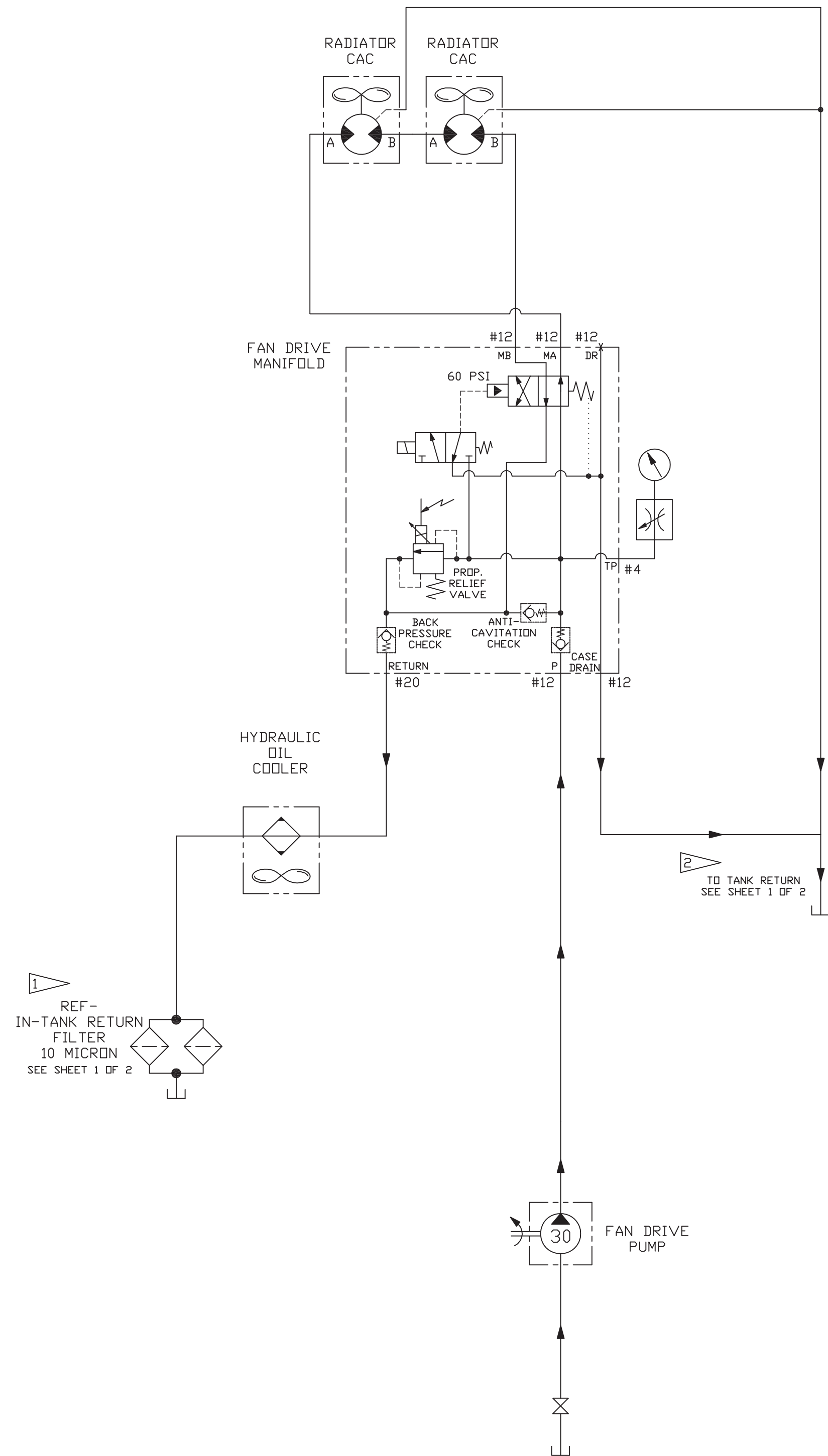


*PRESSURE SETTING PROCEDURE
 LOWER RH HOLD/DOWN/KICKOFF VALVE MAIN RELIEF VALVES TO LESS THAN 100 PSI, RAISE LH HOLD/DOWN/KICKOFF VALVE MAIN RELIEF VALVE TO 3500 PSI. RAISE HOIST/TILT VALVE MAIN RELIEF VALVE TO 3500 PSI. SET HOIST/TILT VALVE CIRCUIT RELIEF VALVES WITH ENGINE AT IDLE. 3400 PSI FOR HOIST BASE, HOIST STEM AND TILT STEM, 900 PSI FOR TILT BASE. THE 3400 PSI AT IDLE CORRESPONDS TO A CIRCUIT RELIEF CRACKING PRESSURE OF 2600-2700 PSI. SET HOIST/TILT MAIN RELIEF VALVE WITH ENGINE AT IDLE, 2400 PSI SETTING. RAISE RH HOLD/DOWN/KICKOFF VALVE MAIN RELIEF TO 3500 PSI. SET HOLD/DOWN/KICKOFF VALVES CIRCUIT RELIEF VALVES WITH ENGINE AT IDLE. 2700 PSI FOR AUXILIARY HOLD/DOWN STEM AND BASE, MAIN HOLD/DOWN STEM AND BASE AND KICKOFF BASE, 1100 PSI FOR KICKOFF STEM. SET HOLD/DOWN/KICKOFF MAIN RELIEF VALVES WITH ENGINE AT IDLE, 2500 PSI.



COOLING FAN DRIVE SYSTEM