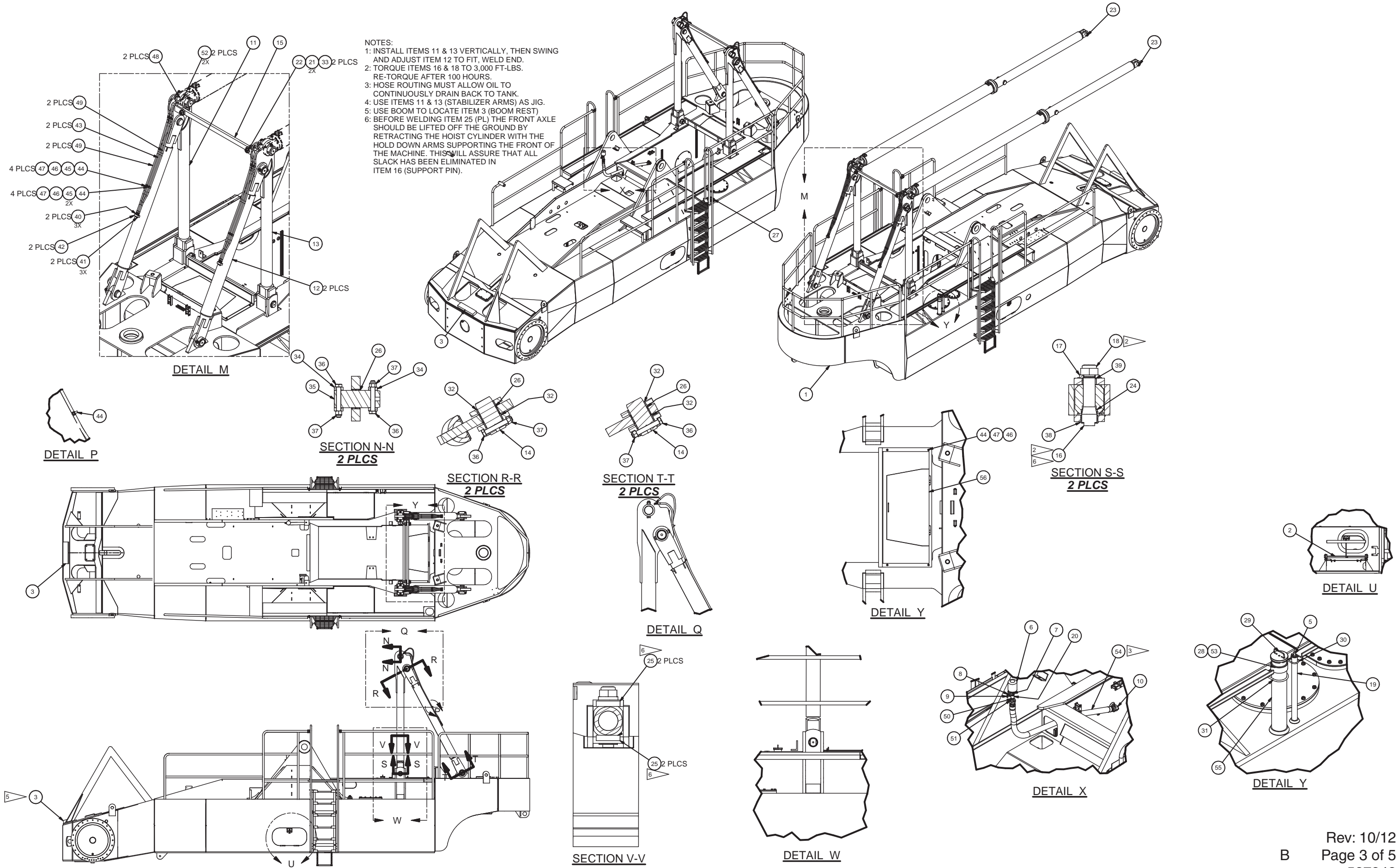

Chassis Assembly

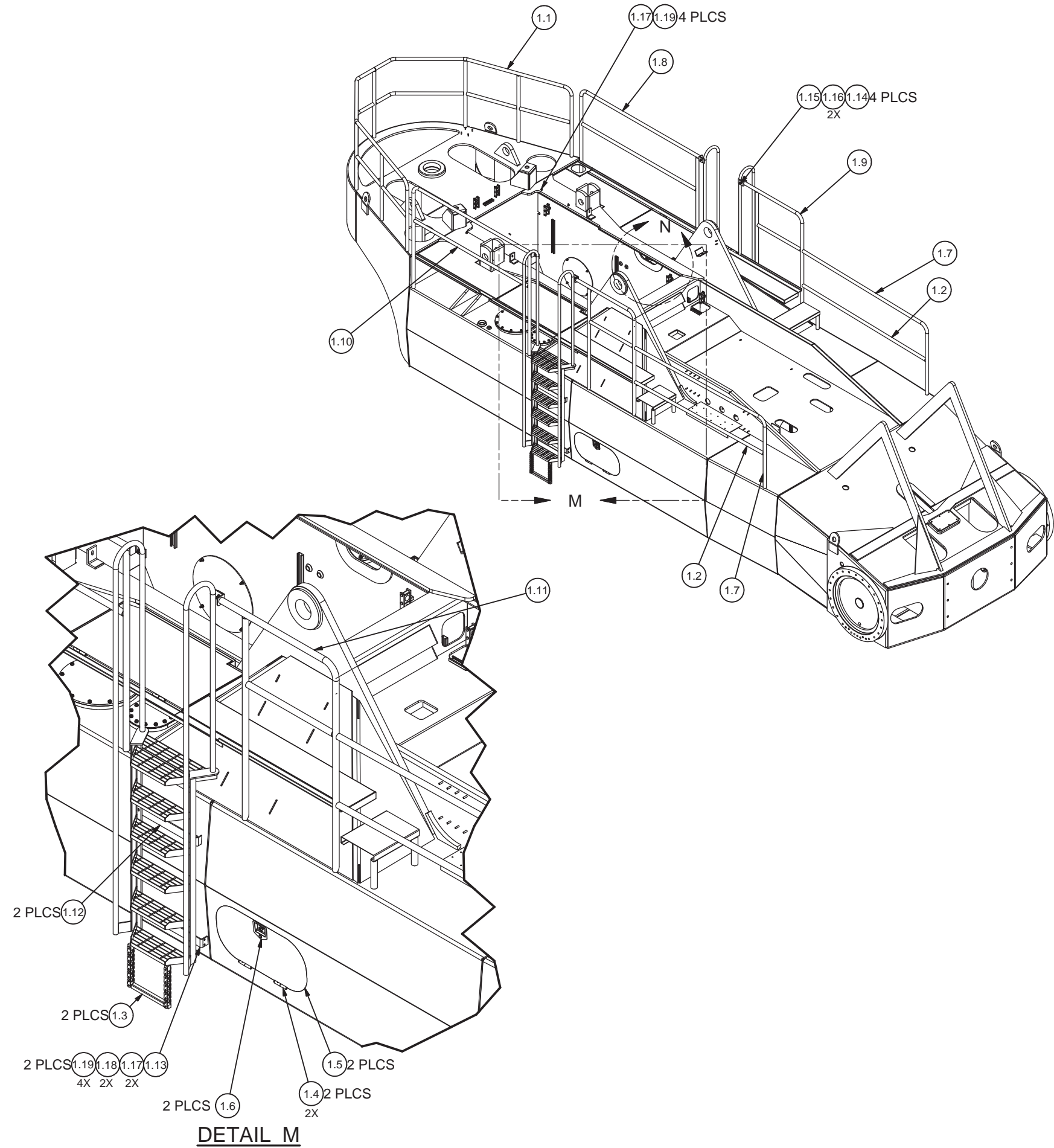
Chassis Assembly

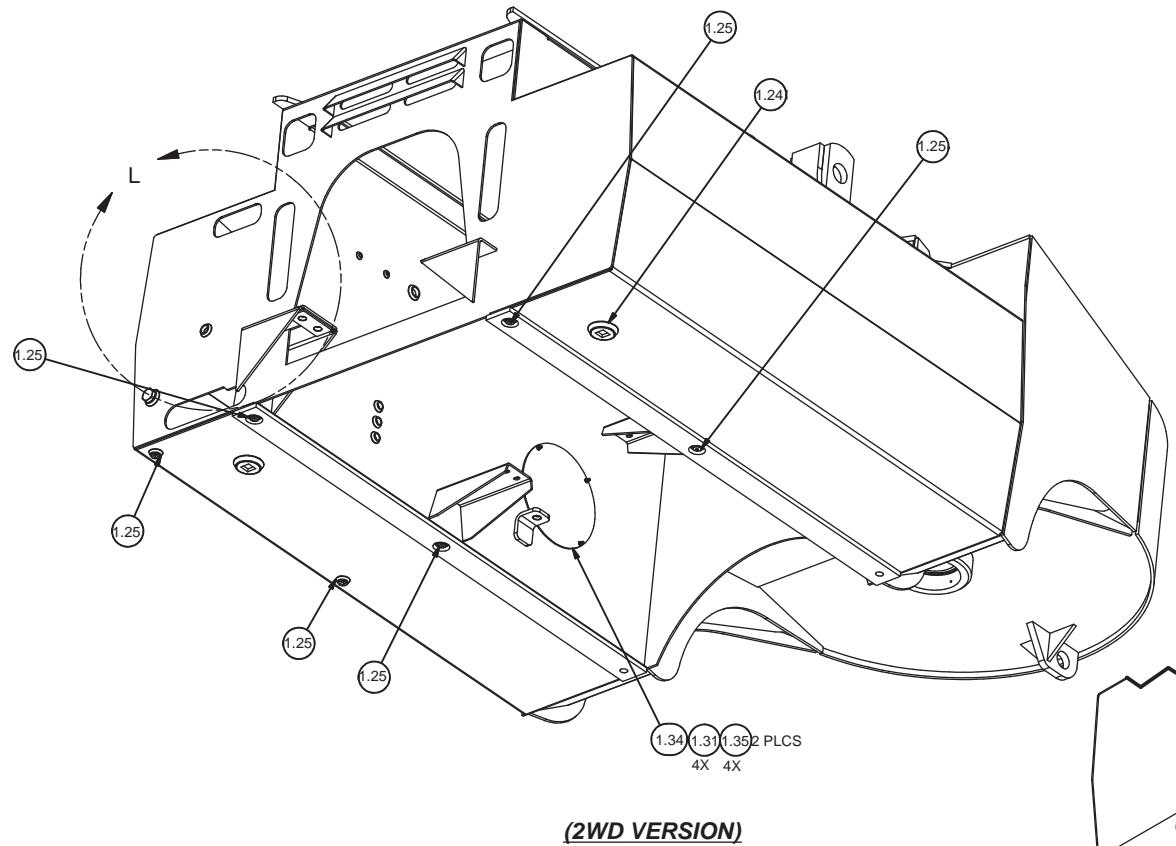
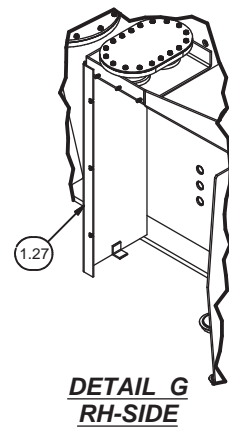
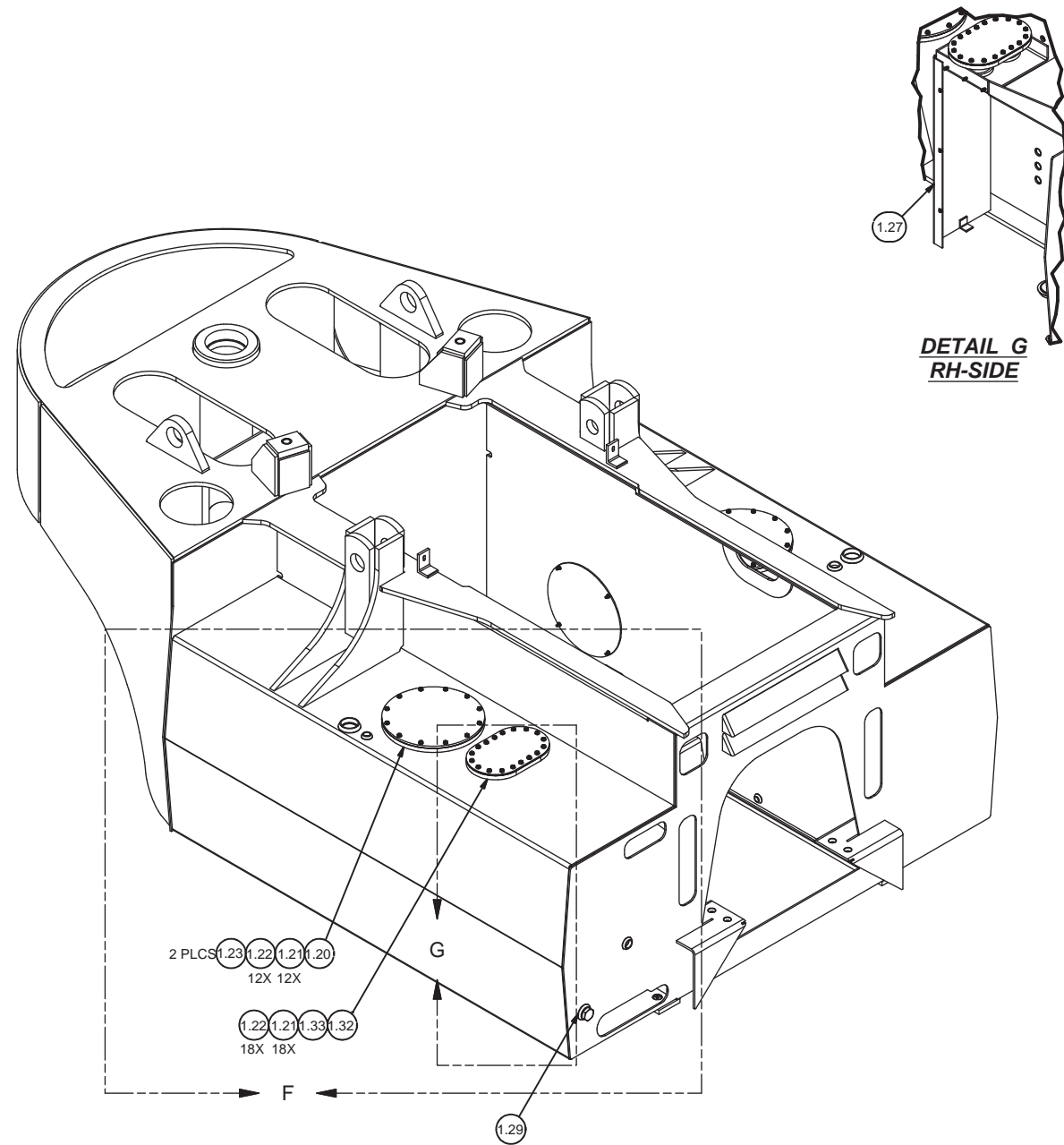
Item	Part No.	Qty	Description	Item	Part No.	Qty	Description
	587842		Chassis Assembly				
1	587844	1	. Chassis Weldment	11	587941	1	. Stab Weldment, LH Front
1.1	586239	1	. Handrail Weldment,Rear	12	581000	2	. Stab Weldment,Rear
1.2	573330	2	. Handrail	13	587942	1	. Stab Weldment, RH Front
1.3	581493	2	. Ladder Weldment	14	570233	4	. Pin
1.4	551380	4	. Hinge Assembly	15	587943	1	. Link
1.5	577723	2	. Plate,Door	16	570333	2	. Bolt, Tapereducer
1.6	236307	2	. Handle, Drop 'T'	17	560581	2	. Washer
1.7	573329	2	. Handrail	18	244433	2	. Locknut
1.8	581501	1	. Handrail Weldment,LH	19	581604	1	. Tube,D/Stick
1.9	581503	1	. Handrail Wldmdt,LH	20	561316	1	. Bracket Weldment,Fuel Filter
1.10	581506	1	. Handrail Weldment,LH	21	229417	4	. Flat Washer
1.11	581507	1	. Handrail Weldment,RH	22	2307143W	2	. Capscrew
1.12	562816	2	. Bracket	23	558423	2	. Pin
1.13	562817	2	. Bracket	24	212432	2	. Bearing Cup
1.14	R13811193	4	. Locknut	25	580997	4	. Plate
1.15	200454W	4	. Capscrew	26	570232	6	. Bushing
1.16	222615	8	. Flat Washer	27	256895	1	. Fill, Fuel Tank
1.17	R13811191	8	. Locknut	28	R14340	1	. Strainer
1.18	221499W	4	. Capscrew	29	R1917921	1	. Cap
1.19	230282	12	. Flat Washer	30	504541	1	. U-Bolt
1.20	554445	2	. Plate,Manhole Cover	31	234307	1	. U-Bolt
1.21	16830W	42	. Capscrew	32	570319	8	. Bushing
1.22	207563	42	. Seal	33	226555	2	. Nut, Esna
1.23	555064	2	. Gasket	34	570218	4	. Lock Collar
1.24	227378	2	. Fitting	35	570219	2	. Pin
1.25	238659	6	. Plug, Magnetic	36	Y17C-16112	8	. Capscrew
1.26	554520	2	. Cover Weldment,Baffle	37	R13803587	8	. Locknut
1.27	563750	1	. Plate	38	570332	2	. Bushing
1.28	563775	1	. Gasket	39	570441	2	. Bushing
1.29	227042	1	. Fitting	40	209750	6	. Fitting
1.30	554150	1	. Plate,Cover	41	00191758	6	. Fitting
1.31	R13811191	28	. Locknut	42	565406	2	. Manifold, Lube
1.32	562468	1	. Gasket	43	226732	2	. Hose Assembly
1.33	562469	1	. Cover	44	222297	12	. Stud, Weld
1.34	570200	2	. Plate,Cover	45	R13803044	12	. Clip, Insul
1.35	230282	14	. Flat Washer	46	R13811191	12	. Locknut
2	* 580721	1	. Battery Box Installation	47	230282	12	. Flat Washer
3	567275	1	. Boom Rest	48	209750	2	. Fitting
5	561108	1	. Dipstick Assembly	49	14826	4	. Hose Assembly
6	224744	1	. Filler Breather	50	209901	1	. Fitting
	230463	1	. Element	51	581728	1	. Fitting
7	209159	1	. Fitting	52	209790	4	. Fitting, Ff
8	209505	1	. Fitting	53	251714	1	. Filler Neck
9	211398	1	. Draincock	54	251772	1	. Hose Assembly
10	209421	1	. Fitting	55	581932	1	. Nipple, Pipe
				56	581915	1	. Grate Weldment,Rear

* See Separate Coverage



NOTES:
 1: INSTALL ITEMS 11 & 13 VERTICALLY, THEN SWING AND ADJUST ITEM 12 TO FIT, WELD END.
 2: TORQUE ITEMS 16 & 18 TO 3,000 FT-LBS. RE-TORQUE AFTER 100 HOURS.
 3: HOSE ROUTING MUST ALLOW OIL TO CONTINUOUSLY DRAIN BACK TO TANK.
 4: USE ITEMS 11 & 13 (STABILIZER ARMS) AS JIG.
 5: USE BOOM TO LOCATE ITEM 3 (BOOM REST)
 6: BEFORE WELDING ITEM 25 (PL) THE FRONT AXLE SHOULD BE LIFTED OFF THE GROUND BY RETRACTING THE HOIST CYLINDER WITH THE HOLD DOWN ARMS SUPPORTING THE FRONT OF THE MACHINE. THIS WILL ASSURE THAT ALL SLACK HAS BEEN ELIMINATED IN ITEM 16 (SUPPORT PIN).





(2WD VERSION)

