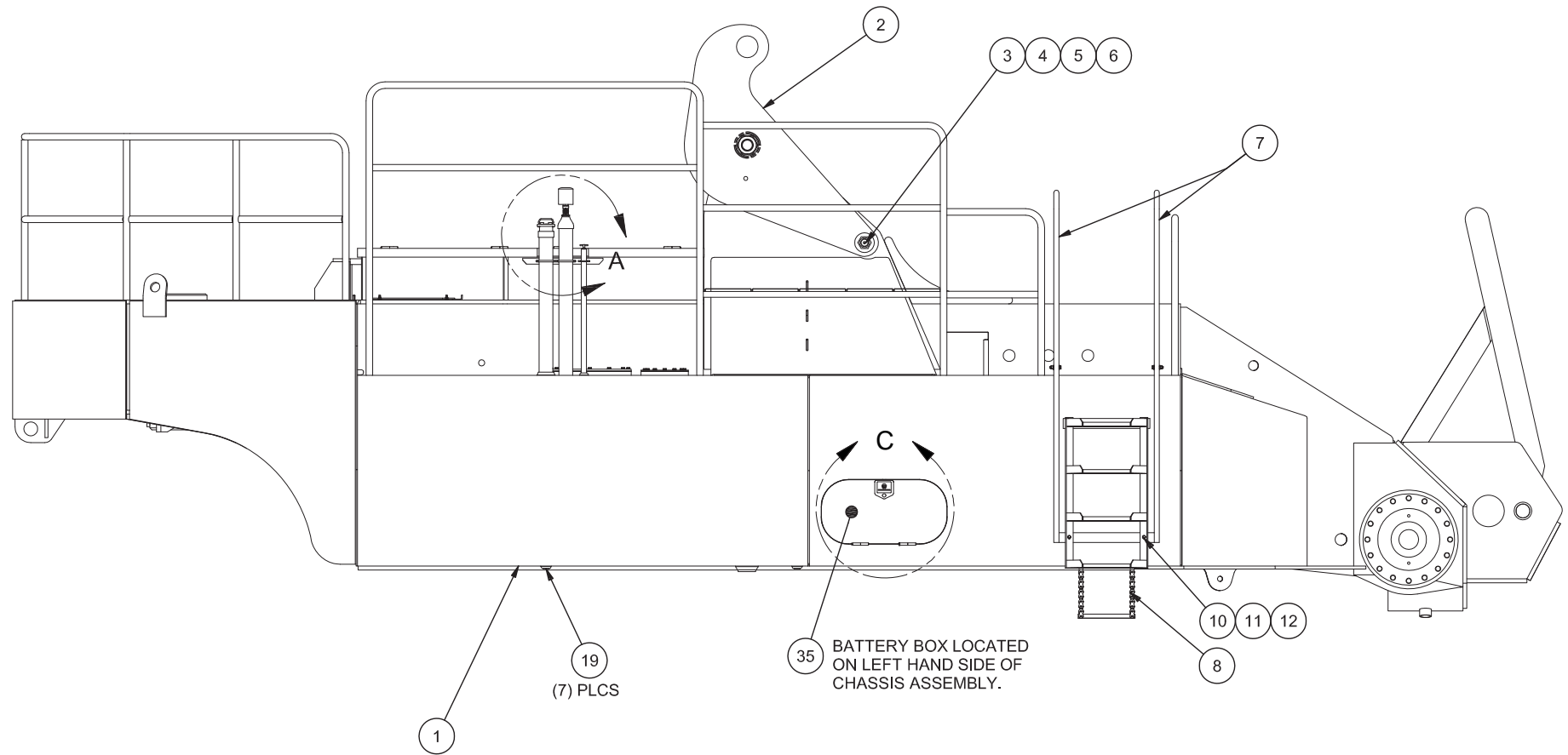
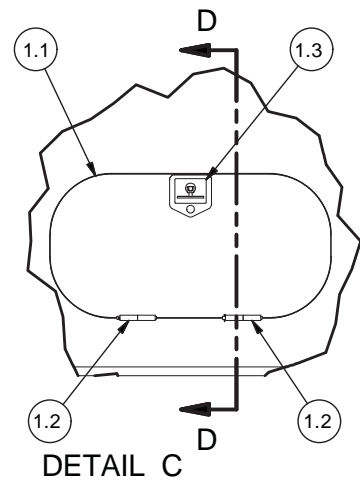
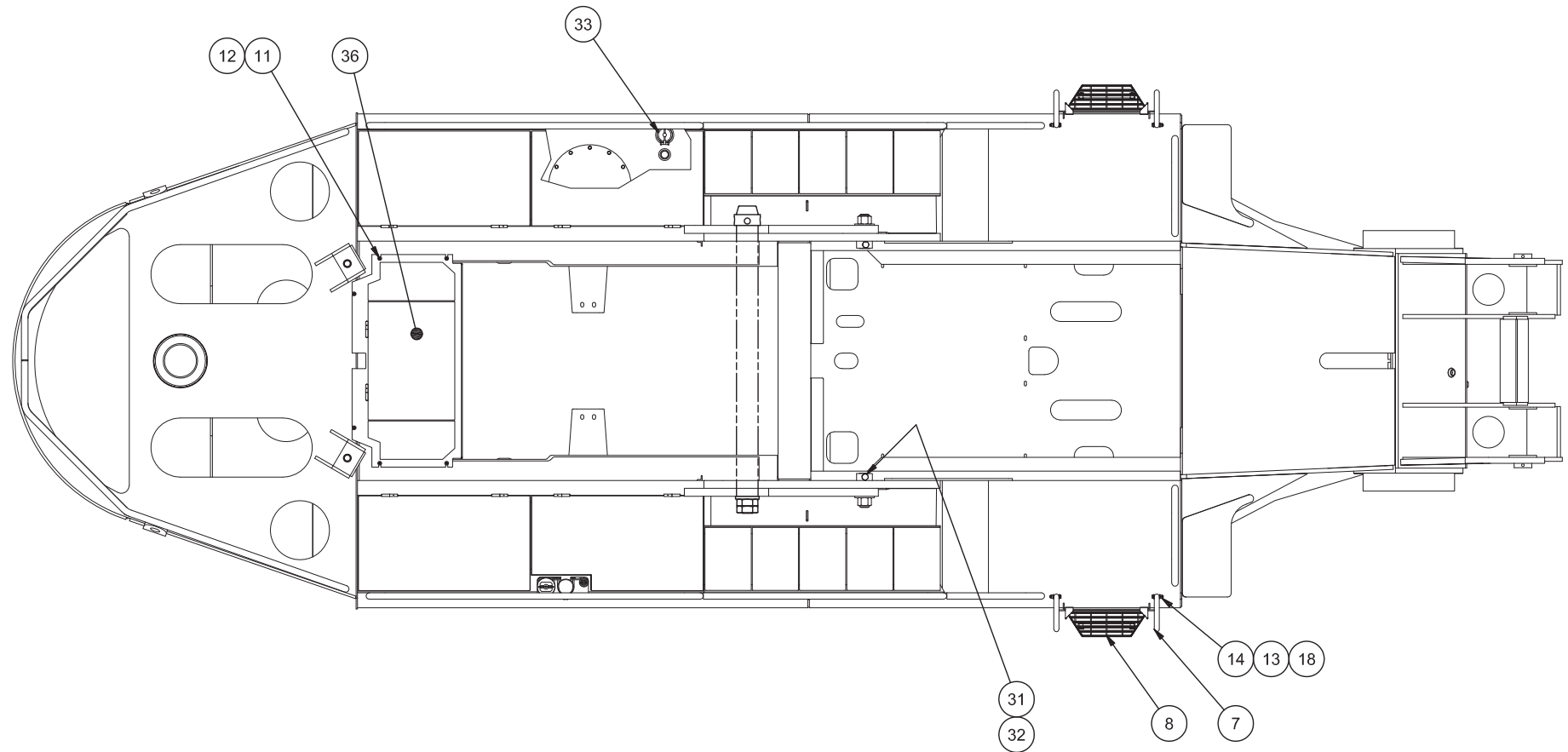
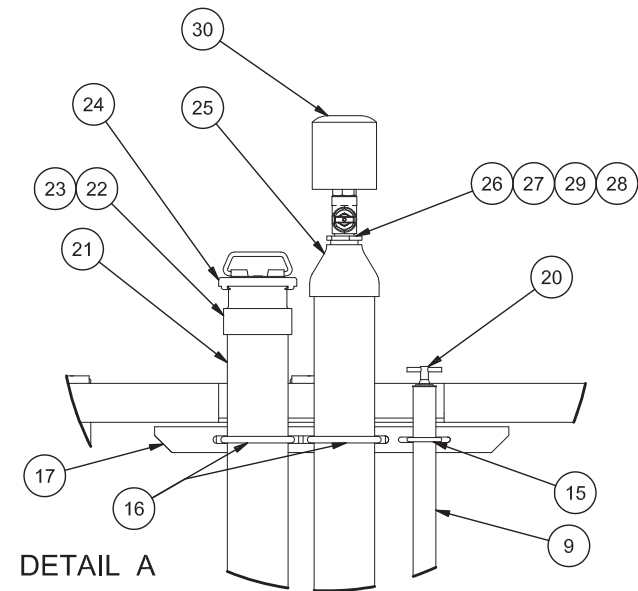
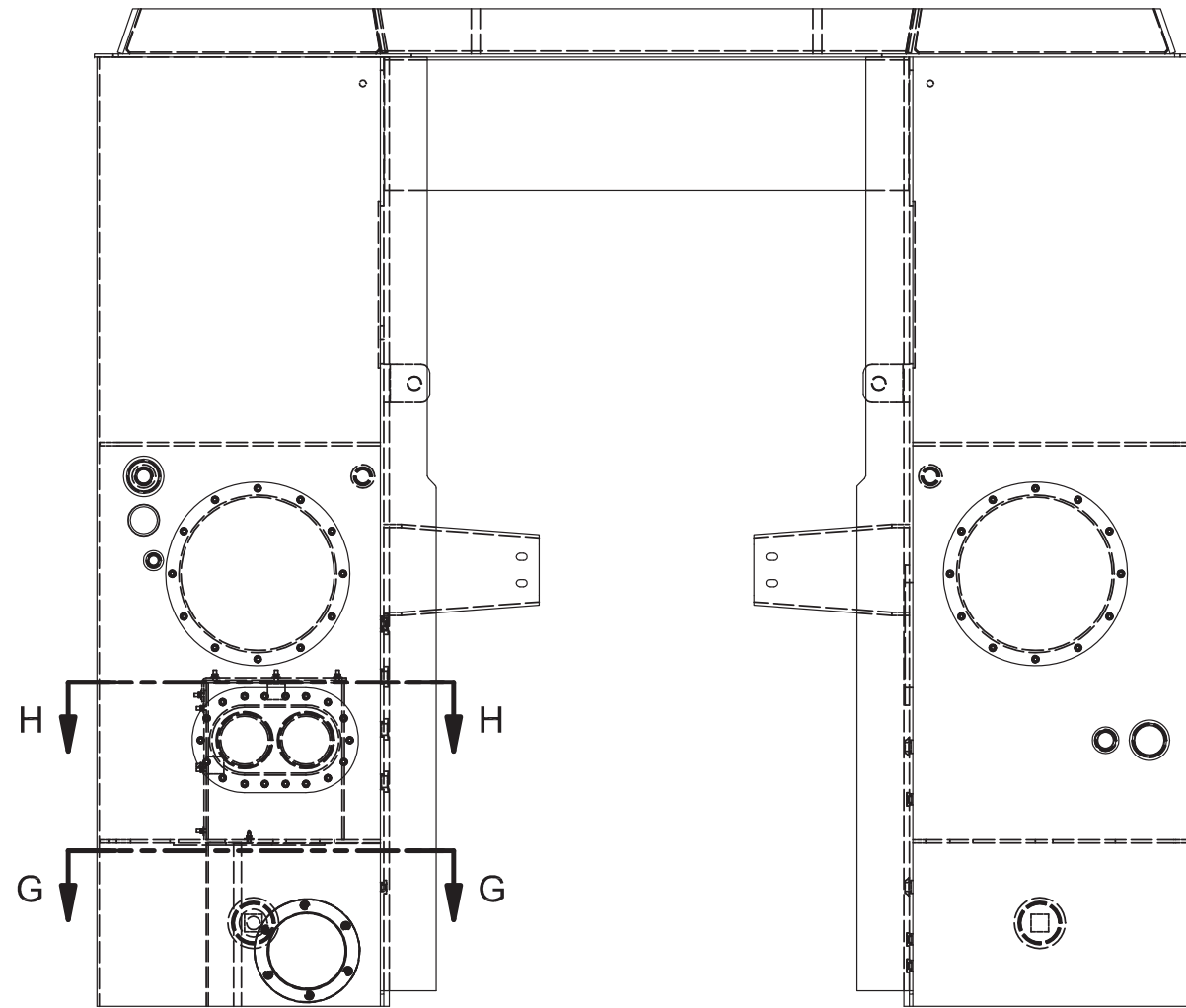

Chassis Assembly

Chassis Assembly

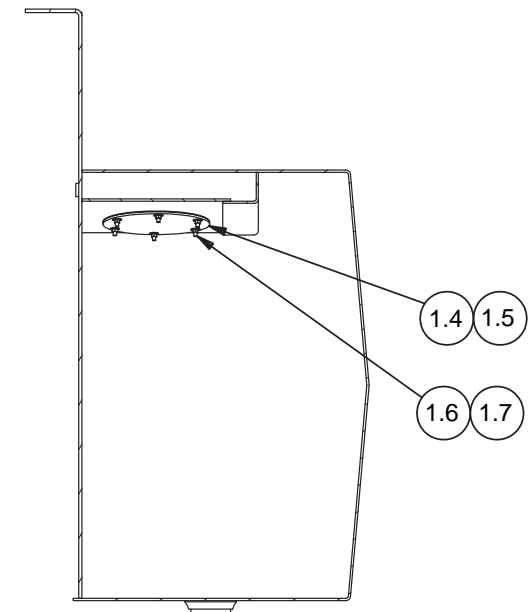
Item	Part No.	Qty	Description	Item	Part No.	Qty	Description
586153 Chassis Assembly							
1	586154	1	. Chassis	9	571646	1	. Tube,D/Stk
1.1	560101	2	.. Door, Tank	10	221499W	12	. Capscrew
1.2	551380	4	.. Hinge	11	R13811191	18	. Locknut
1.3	236307	2	.. Handle	12	230282	30	. Flat Washer
1.4	554150	1	.. Cover	13	221576W	4	. Capscrew
1.5	563775	1	.. Gasket	14	R13811193	4	. Locknut
1.6	00103341	19	.. Washer, Flat	18	201569	8	. Flat Washer
1.7	223654	19	.. Nut	19	238659	7	. Plate, Magnetic
1.8	554520	1	.. Cover	20	562966	1	. Dipstick Weldment
1.9	563749	1	.. Plate	21	581897	1	. Pipe
1.10	563750	1	.. Plate	22	251714	1	. Filler Neck
1.11	562468	1	.. Gasket	23	R14340	1	. Strainer
1.12	562469	1	.. Cover	24	R1917921	1	. Cap
1.13	224563W	42	.. Capscrew	25	222503	1	. Coupling, Reducer
1.14	207563	42	.. Seal	26	00144053	1	. Bushing, Reducer
1.15	555064	2	.. Gasket	27	209159	1	. Fitting
1.16	554445	2	.. Cover	28	209505	1	. Fitting
2	563265	2	. Plate	29	211398	1	. Draincock
3	522957	2	. Lock Collar	30	224744	1	. Filler Breather
4	563700	2	. Pin,Stab Ear		230463	1	.. Element
5	219930	2	. Nut, Esna	31	R13801901	2	. Capscrew
6	574534	2	. Washer	33	256895	1	. Fill, Fuel Tank
7	562841	4	. Handrail Weldment	35	* 582455	1	. Battery Box Installation
8	563186	2	. Step Assembly	36	586687	1	. Grate Weldment,Rear

* See Separate Coverage

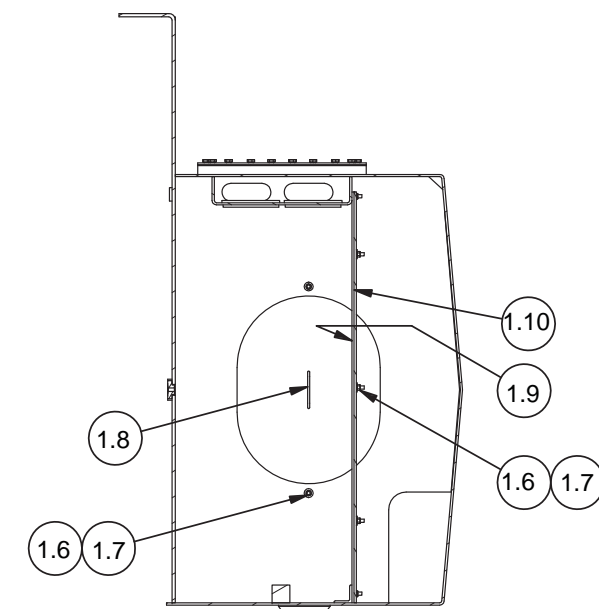




SECTION F-F
SCALE 1/20



SECTION G-G
SCALE 1/20



SECTION H-H

