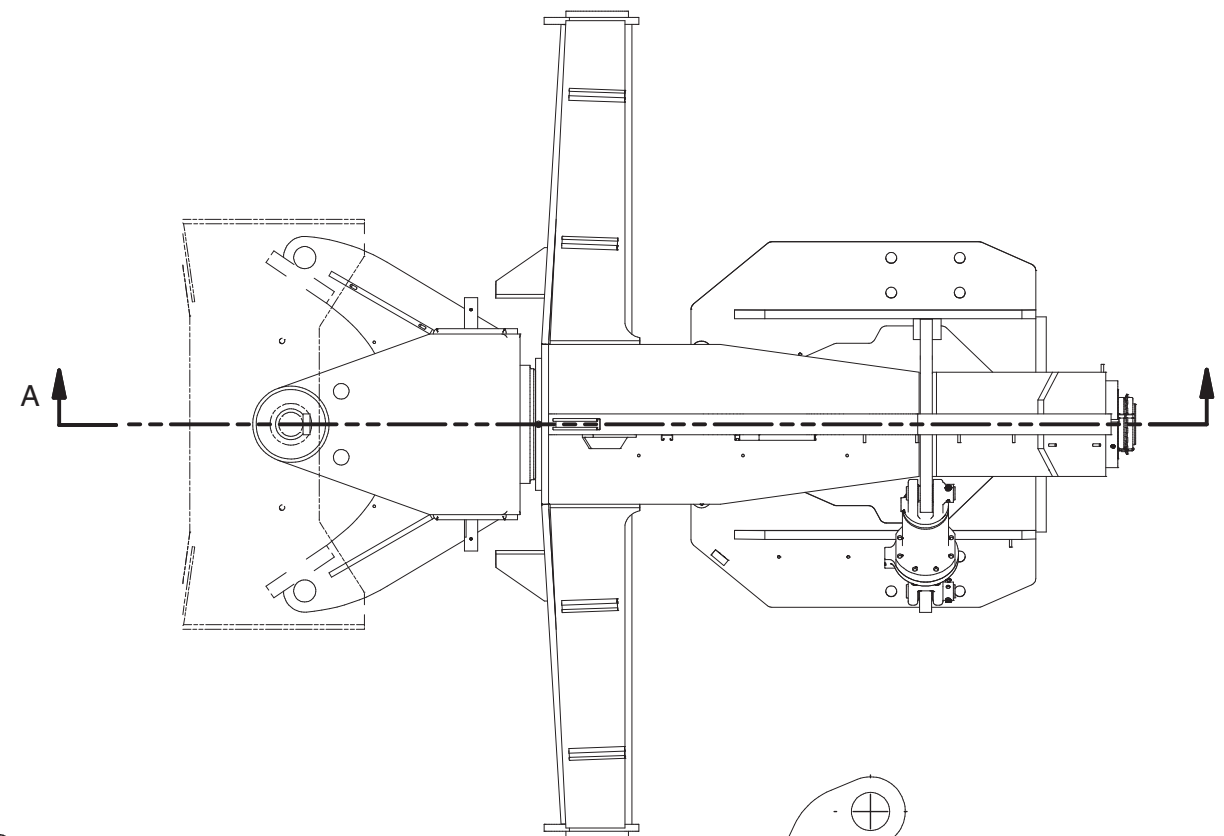
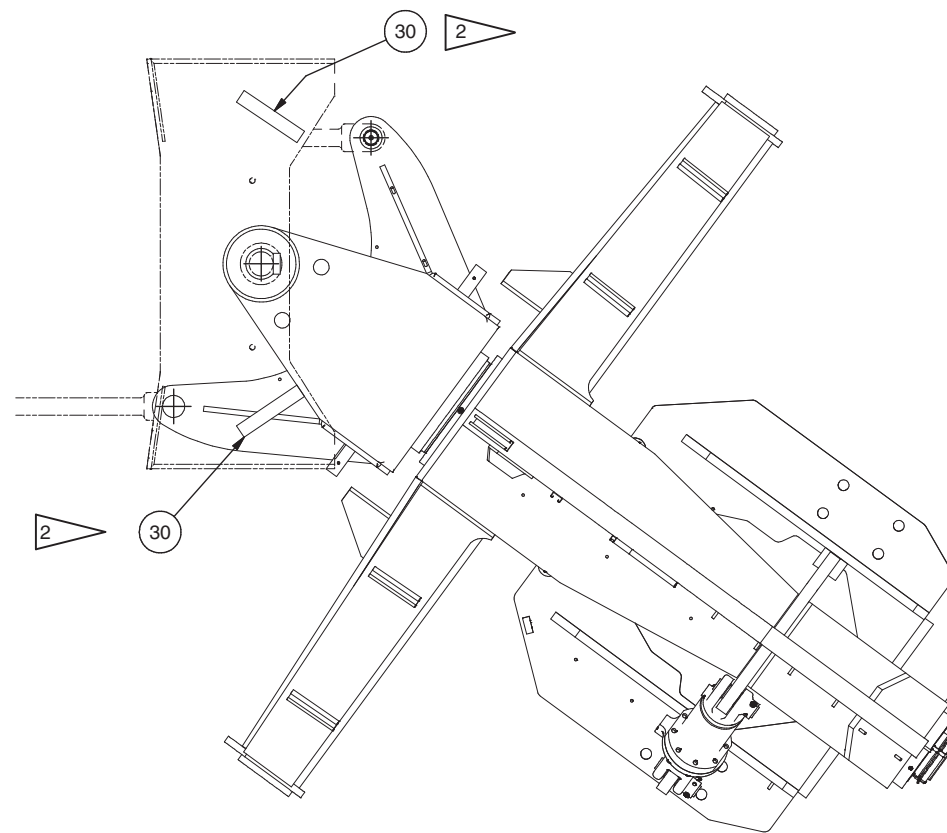


---

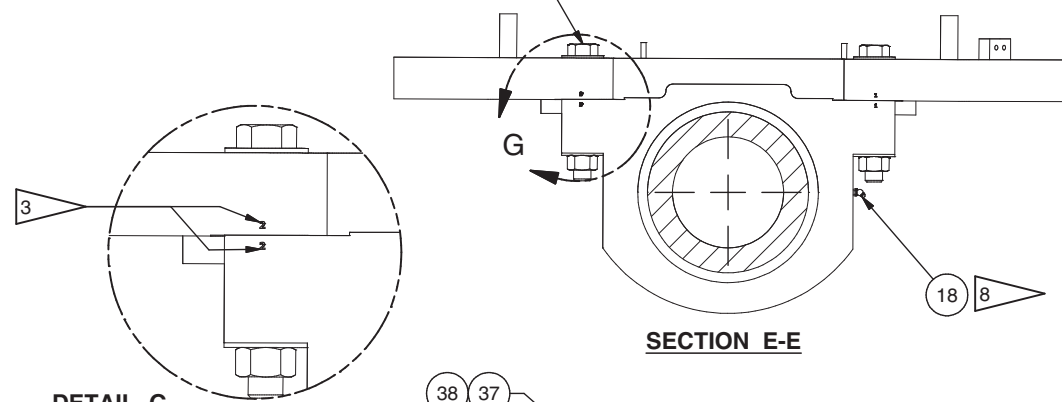
Swivel Hinge/ Bogie

## Swivel Hinge/ Bogie

Item	Part No.	Qty	Description	Item	Part No.	Qty	Description
	<b>586115</b>		<b>Swivel/Bogie/Cradle</b>	20	569784	1	. Fitting
1	586128	1	. Bogie	21	586116	1	. Swivel Box
2	567515	1	. Axle Cradle	22	567594	1	. Pin, Hinge
3	204602	2	. Bearing Cup	23	500243	4	. Bar, Spacer
4	232647	2	. Bearing Cone	24	500093	4	. Washer
5	567601	2	. Plate, Seal	25	214314	2	. Bearing, Spherical
6	224224	2	. O-Ring	26	219928	2	. Jam Nut
7	234539	2	. O-Ring	27	00191758	5	. Fitting, Lube
8	207510	1	. Lockwasher	28	570072	2	. Stop
9	207504	2	. Locknut	29	537493	1	. Pin, Hinge
10	567599	1	. Pin, Bogie	30	524893	4	. Stop
11	567521	1	. Bushing	31	232315	2	. O-Ring
12	556837	1	. Nut	32	573744	1	. Plate, Lock
13	501874	1	. Nut	33	222677	1	. Flat Washer
14	556836	2	. Plate, Seal	34	534398	1	. Plate, Lock
15	203506	2	. O-Ring	35	204502	2	. Bearing, Spherical
16	204605	2	. Bearing Cup	36	512865	2	. Pin, Steering Cylinder
17	200219	2	. Bearing Cone	37	R13811082	2	. Capscrew
18	00271283	2	. Fitting, Lube	38	224202	2	. Nut, Esna
19	00187394	1	. Coupling, Pipe	39	229122	1	. Fitting, Relief



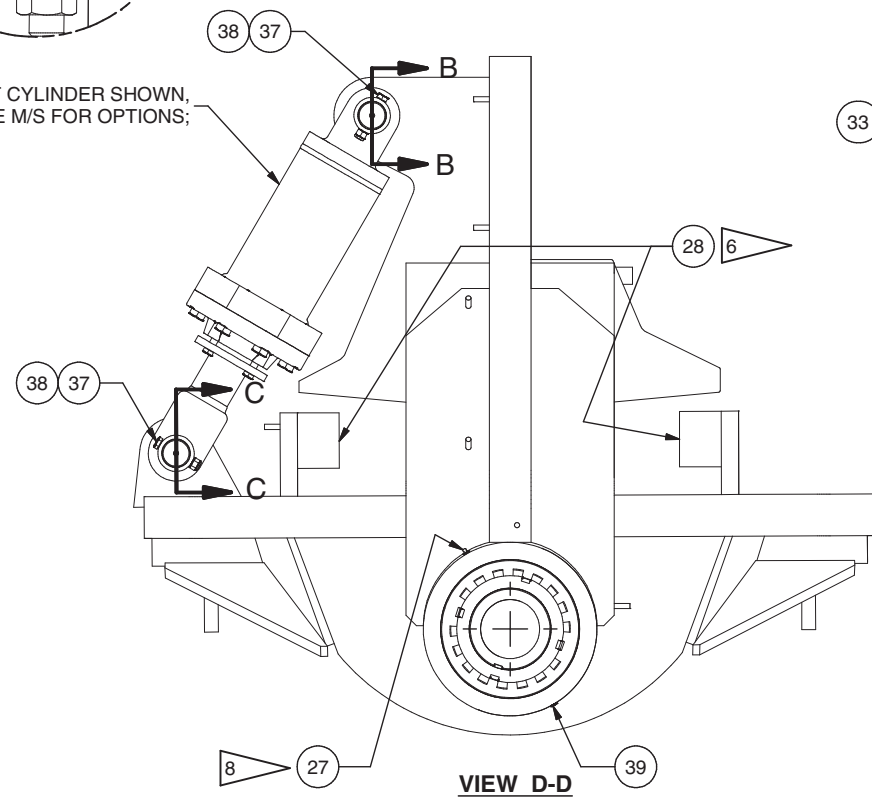
7 TORQUE TO: 1,500 - 1,575 Ft-Lbs.



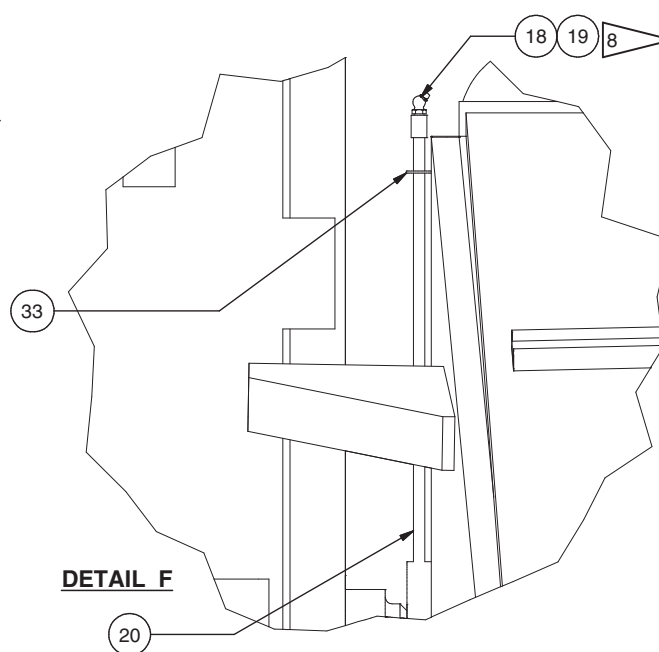
**SECTION E-E**

**DETAIL G**

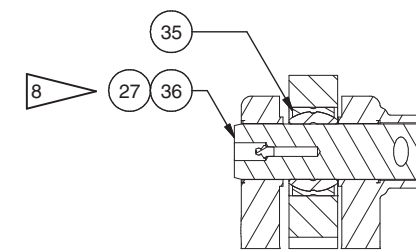
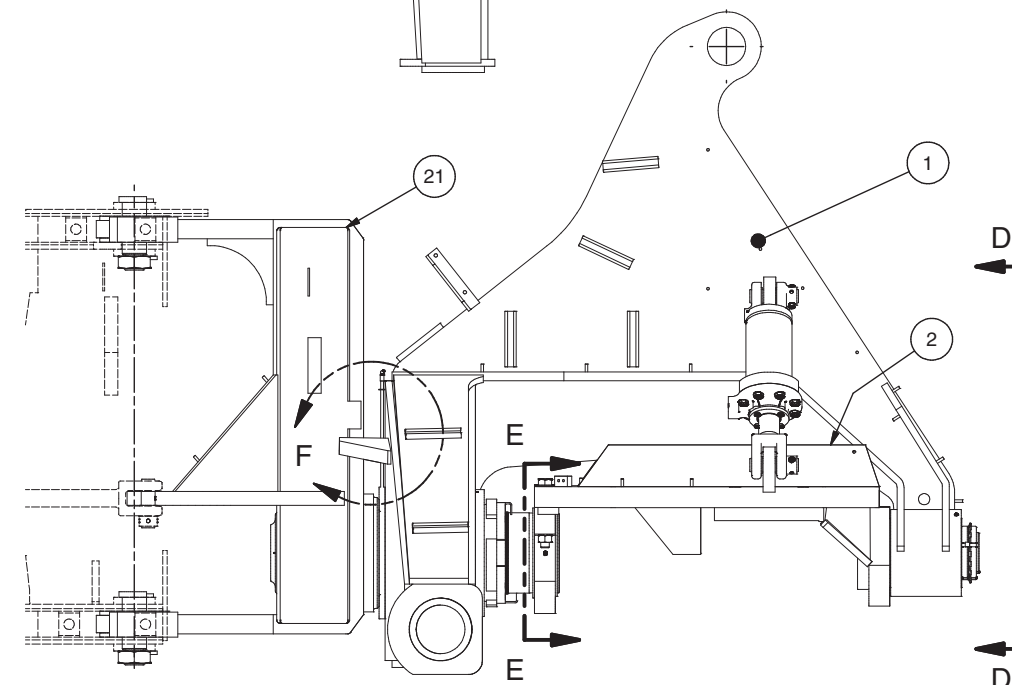
SIDE TILT CYLINDER SHOWN,  
SEE M/S FOR OPTIONS;



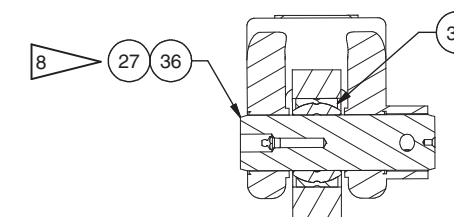
**VIEW D-D**



**DETAIL F**



**SECTION B-B**



**SECTION C-C**

C

**NOTES:**

- 1 TORQUE FIRST BEARING NUT, ITEM 9, TO: 1,000 - 1,100 FT-LBS, INSTALL THE LOCK WASHER, ITEM 8, THEN INSTALL THE SECOND BEARING NUT (ALSO ITEM 9), AND TORQUE TO 250 FT-LBS. BEND TABS OF ITEM 8 TO LOCK BOTH BEARING NUTS;
- 2 LOCATE ITEM(S) 30 ON THE TOP SIDE OF THE BOTTOM HINGE PLATE OF EACH HINGE BAR ASSEMBLY. POSITION ITEM(S) 30 AGAINST THE SWIVEL BOX, AS SHOWN, BY FULLY RETRACTING ONE STEERING CYLINDER AND THEN EXTENDING THE ROD OF THAT CYLINDER 1/2".
- 3 REAR BEARING HOUSING MUST BE INSTALLED SO THE NUMBERS STAMPED ON THE RIGHT AND LEFT SIDE OF THE PART MATCH WITH LIKE NUMBERS STAMPED ON THE AXLE CRADLE, ITEM.2.
- 4 TORQUE RATING IS FOR BOLTS WHICH HAVE A RESIDUAL MANUFACTURING PROTECTIVE OIL COATING.
- 5 AFTER ITEM 12 HAS BEEN PROPERLY TORQUED, INSTALL LOCK TAB, ITEM 32.
- 6 LOCATE AXLE STOPS, ITEM 28, BY ROTATING AXLE CRADLE, ITEM 2, 4 1/2" FROM HORIZONTAL, IN EACH DIRECTION.
- 7 UNITS PRIOR TO 1997 HAD 1" BOLTS TORQUE TO: 680-750 Ft-Lbs. SEE KIT, ASC P/N 576332, TO UPGRADE TO 1 1/4" BOLTS.
- 8 VERIFY ALL ZERK FITTINGS ACCEPT GREASE AFTER INSTALLATION;

