

---

Transmission Circuit

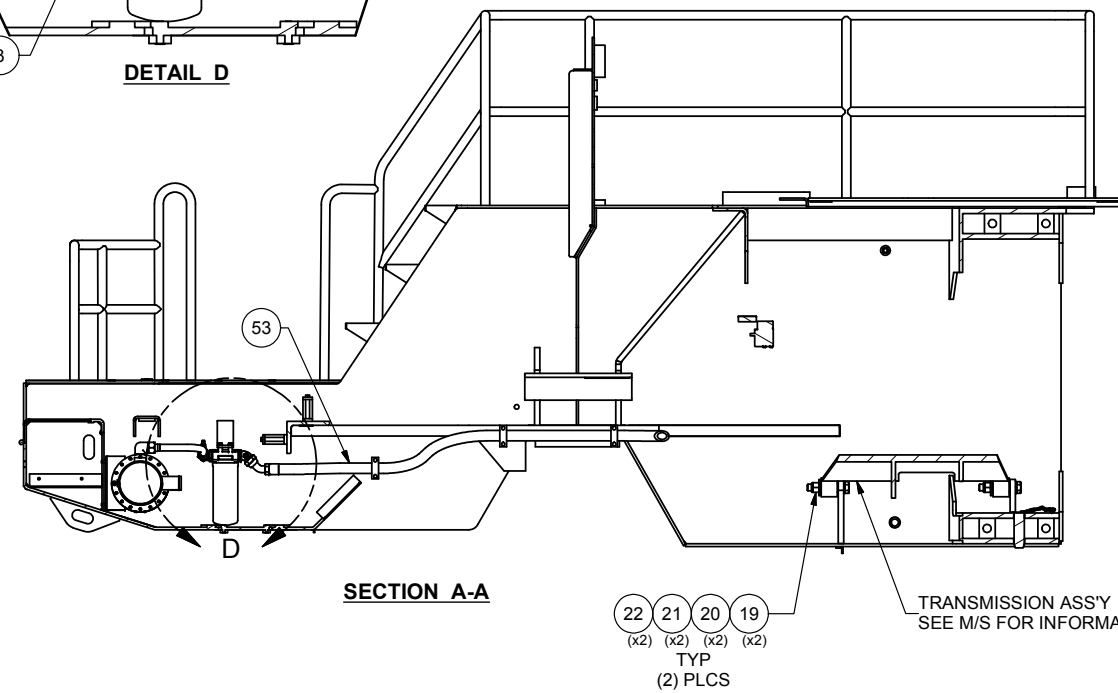
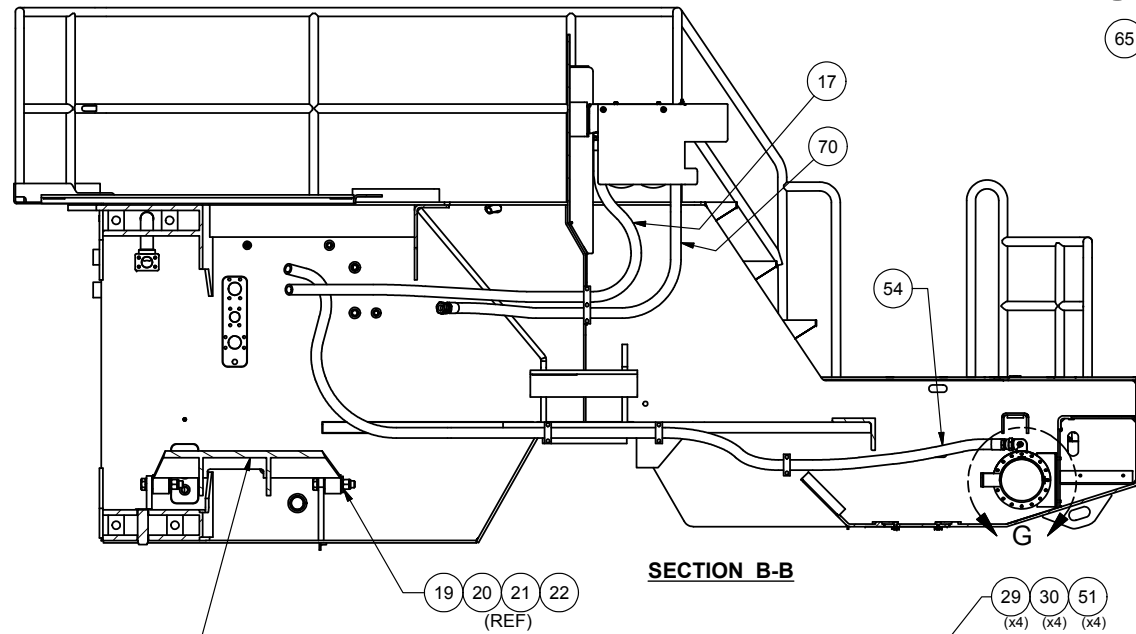
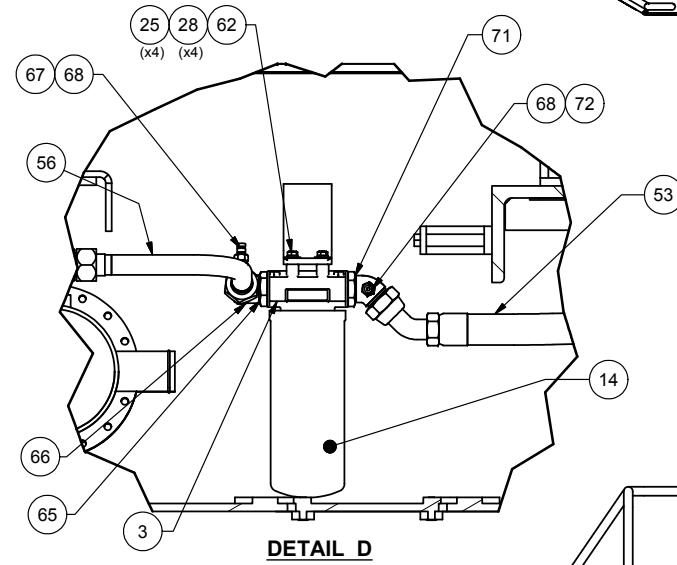
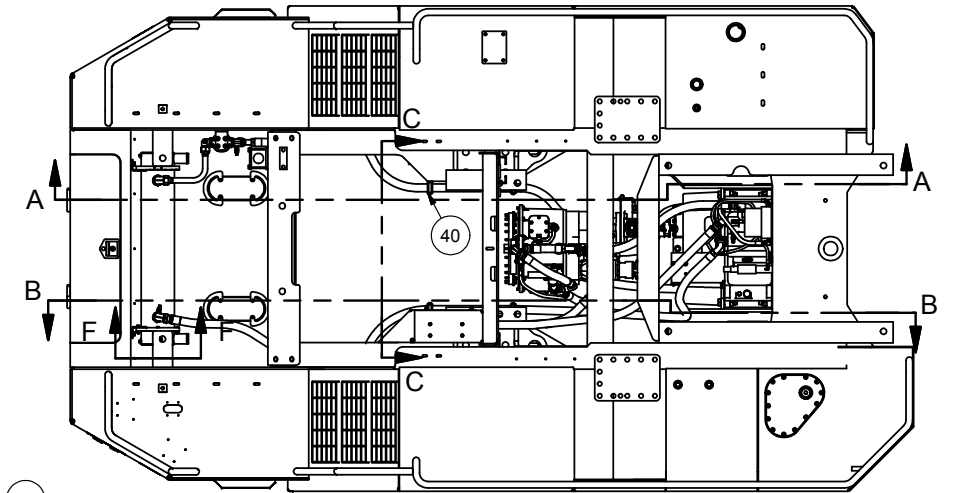
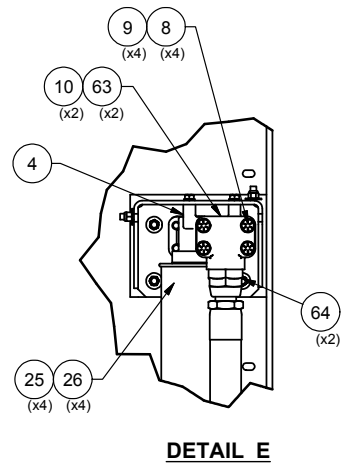
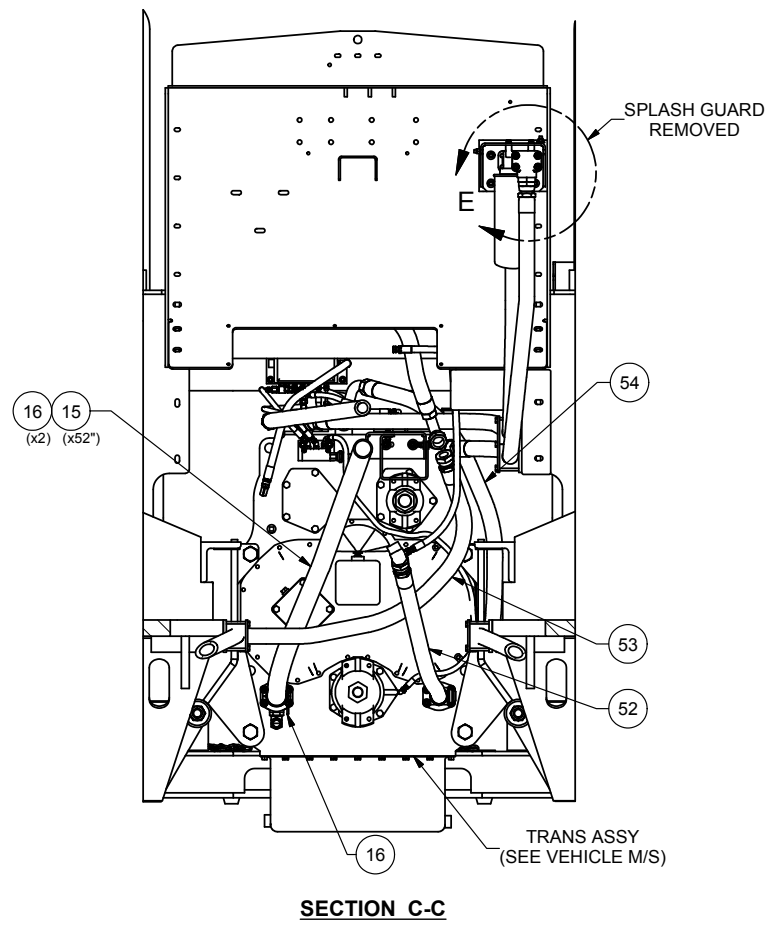
## Transmission Circuit

Item	Part No.	Qty	Description	Item	Part No.	Qty	Description
	<b>585133</b>		<b>Transmission Circuit</b>				
1	*a 578293	1	. Module , Valve	39	256246	1	. Hose Assembly
2	567040	1	. Bracket, Solenoid	41	256247	1	. Hose Assembly
3	*b 253695	1	. Filter Head Assembly	43	245785	2	. Hose Assembly
4	*c 584259	1	. Filter Head Assembly	46	209512	1	. Fitting
8	R13811080	8	. Capscrew	47	247429	2	. Element
9	234665	8	. Lockwasher	48	229666	2	. Fitting
10	203516	2	. O-Ring	49	209411	1	. Fitting
11	*a 249984	1	. Cooler, Transmission	50	212097	1	. Fitting
12	21952	1	. Fitting	51	222615	4	. Flat Washer
13	241015	1	. Hose Assembly	52	245587	1	. Hose Assembly
14	253696	1	. Element	53	256243	1	. Hose Assembly
15	201439	5'	. Suction Hose	54	256244	1	. Hose Assembly
16	219321	3	. T-Bolt Clamp	56	583646	1	. Tube Assembly
17	252248	1	. Hose Assembly	57	221499W	4	. Capscrew
19	R13801920	4	. Capscrew	59	585703	1	. Plate, Guard
20	568066	4	. Washer	60	231706	3	. Stud, Weld
21	220918	4	. Locknut	61	221314	4	. Stud, Weld
22	09424151	4	. Flat Washer	62	221497W	4	. Capscrew
25	230282	15	. Flat Washer	63	240163	2	. Fitting
26	223654	11	. Locknut	64	214128	2	. Fitting
27	585134	1	. Plate, Mounting	65	561606	1	. Fitting
28	234135	8	. Lockwasher	66	235387	2	. Fitting
29	221563W	4	. Capscrew	67	209083	2	. Fitting
30	R13812516	4	. Lockwasher	68	R330325	3	. Coupler, Male
33	253823	2	. Hose Assembly	69	585565	1	. Fitting
34	209750	5	. Fitting	70	250122	1	. Hose Assembly
36	R13807532	1	. Fitting	71	R14633	1	. Fitting
37	232054	4	. Capscrew	72	209752	1	. Fitting
38	256240	1	. Hose Assembly				

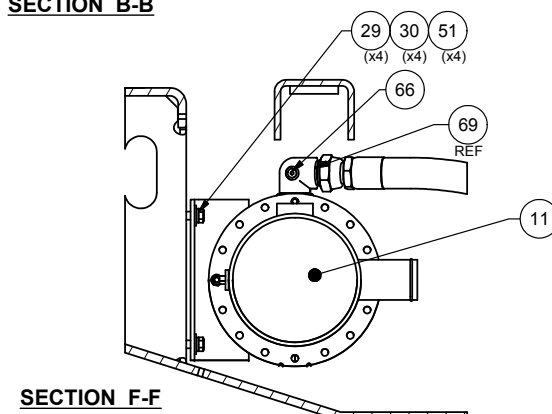
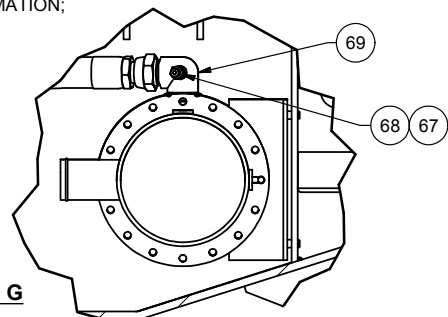
\*a See Separate Coverage

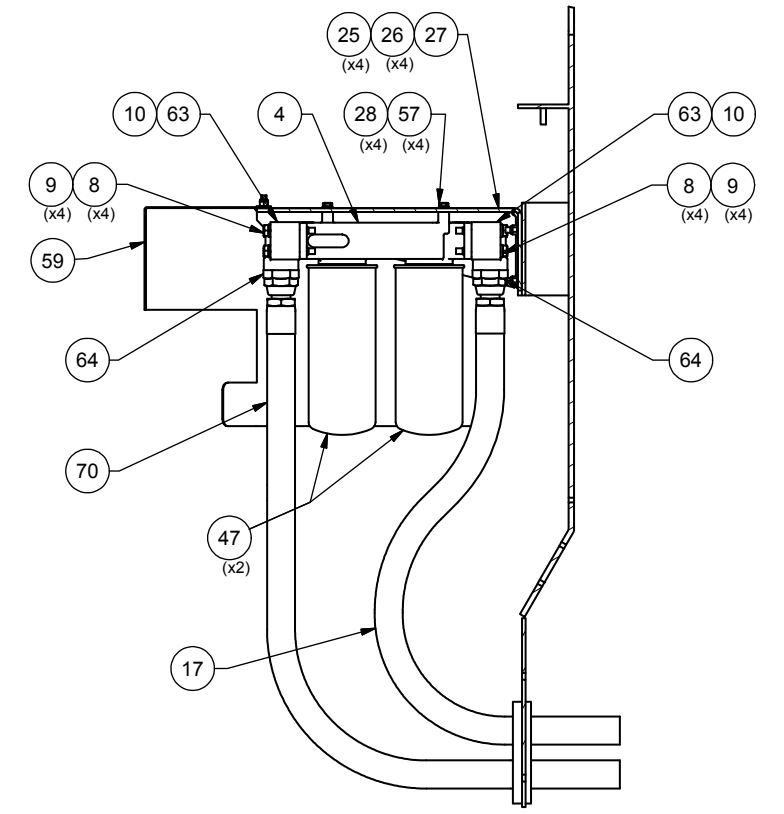
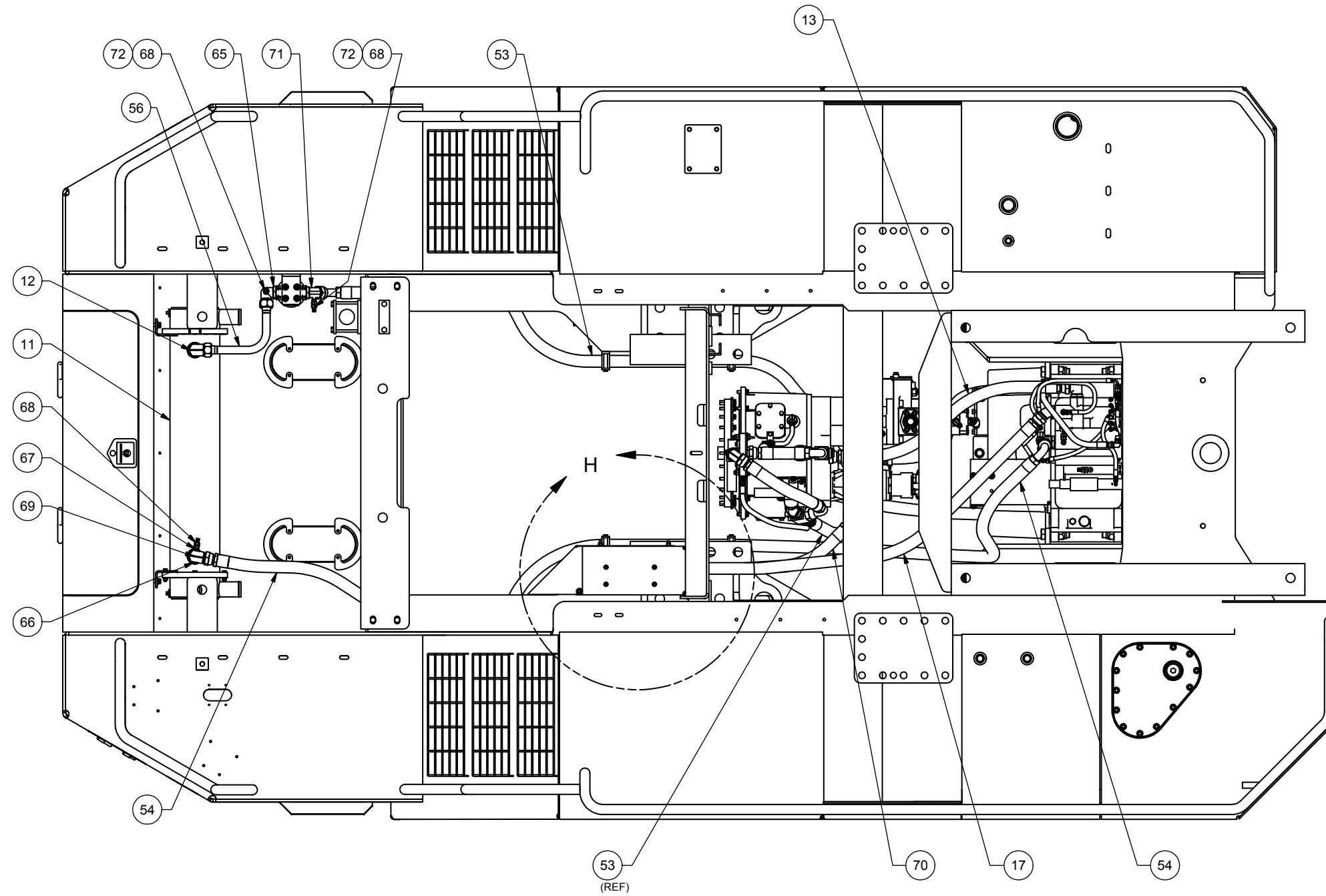
\*b See Item 14 for related Filter Element

\*c See Item 47 for related Filter Elements

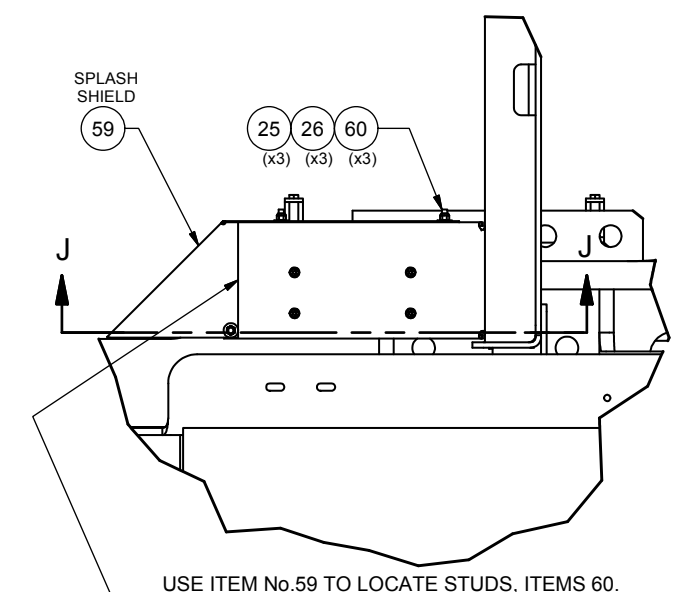


TRANSMISSION ASSY  
SEE M/S FOR INFORMATION;



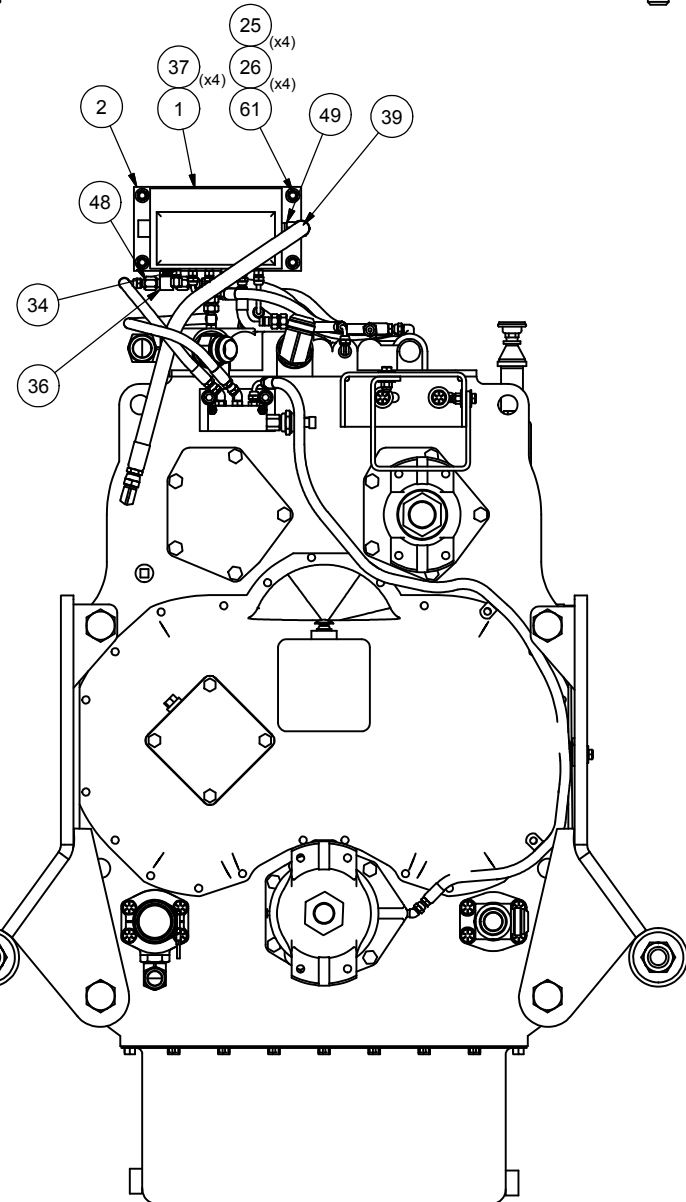
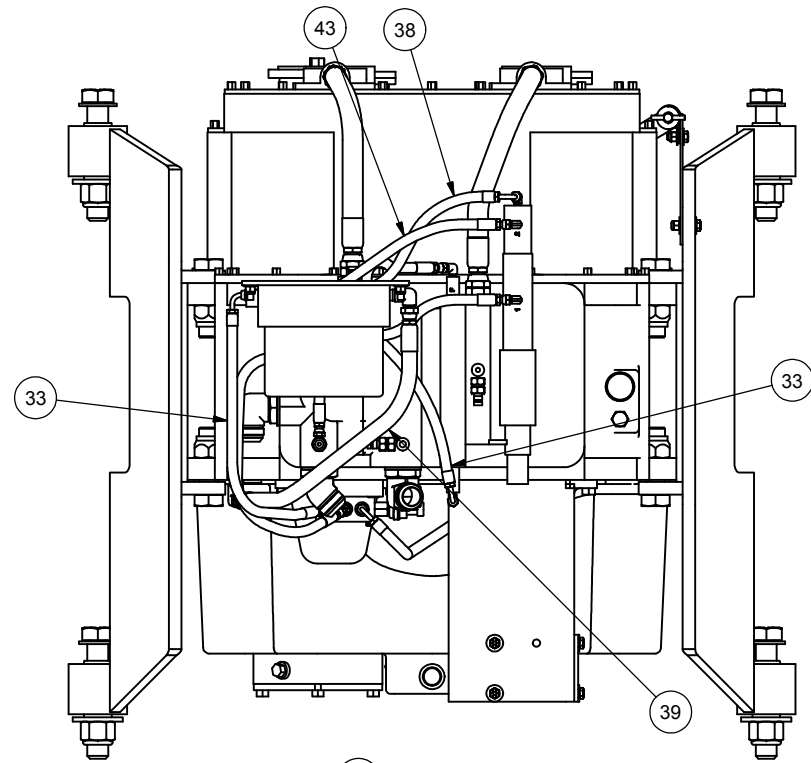


**SECTION J-J**



USE ITEM No.59 TO LOCATE STUDS, ITEMS 60.  
SECURE WITH ITEMS: 25 & 26.

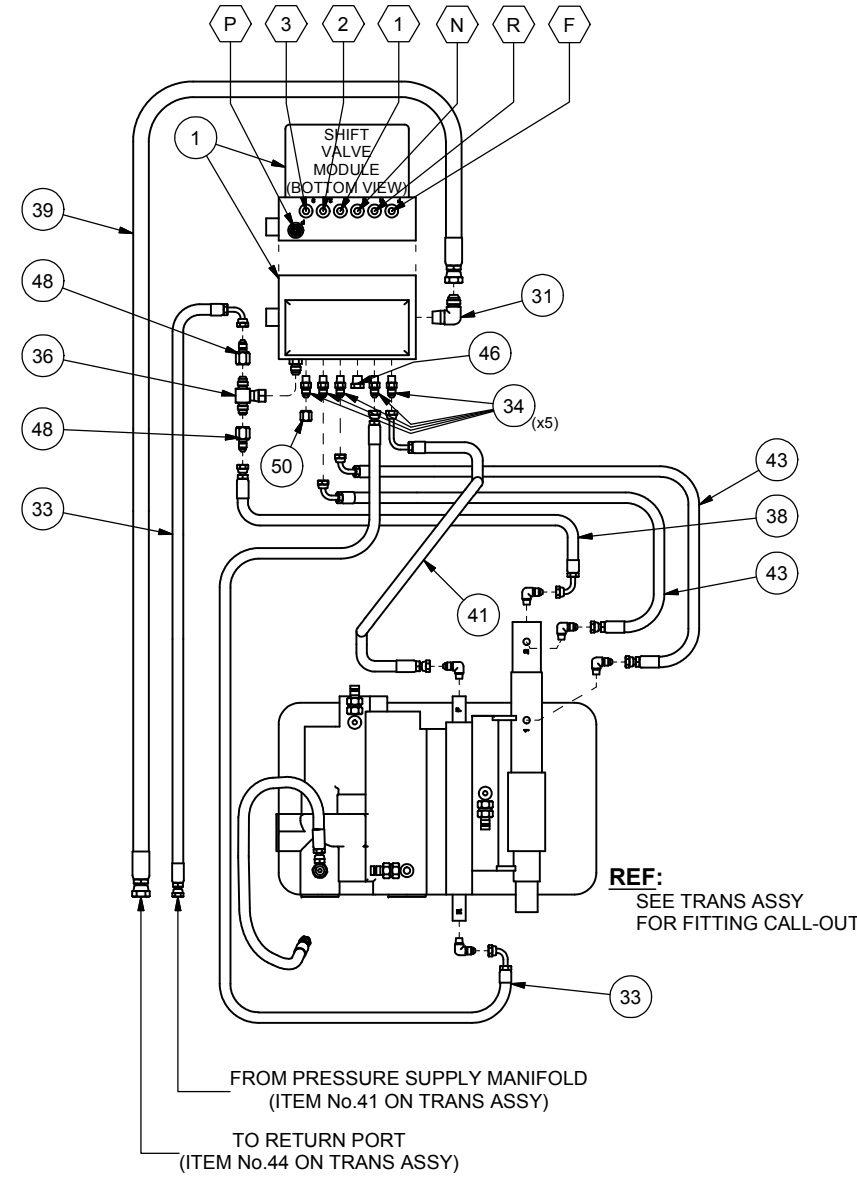
**DETAIL H**



**PORT vs PRESSURE CHART**

DIRECTION	GEAR	PORTS				
		1	2	3	F	R
FORWARD	1st Gear	P	P	P	P	-
	2nd Gear	-	P	P	P	-
	3rd Gear	-	-	P	P	-
	4th Gear	-	-	-	P	-
NEUTRAL		-	-	-	-	-
REVERSE	1st Gear	P	P	P	-	P
	2nd Gear	-	P	P	-	P
	3rd Gear	-	-	P	-	P
	4th Gear	-	-	-	-	P

"P" = PRESSURIZED PORT



**XMSN SHIFT CONTROL  
HOSE ROUTING**