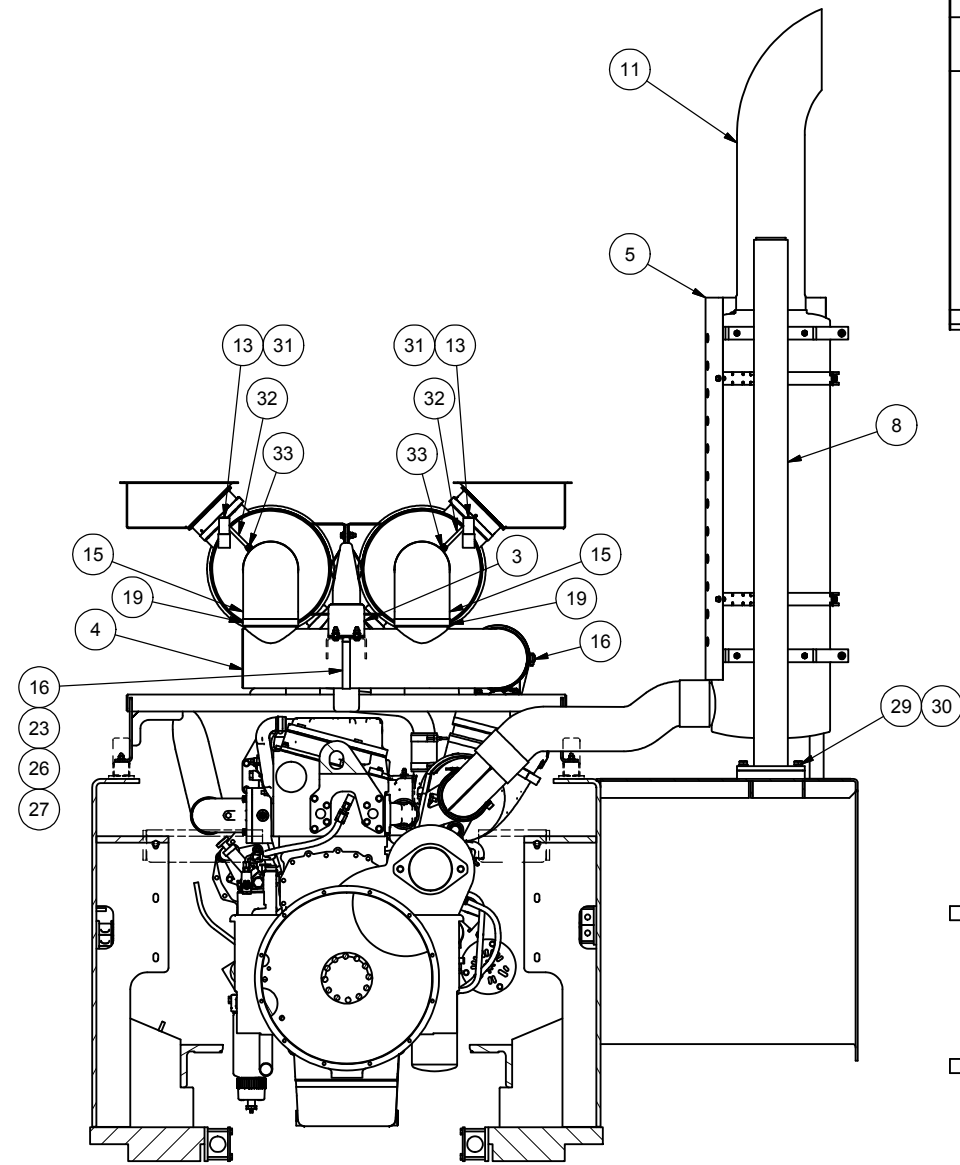

Air Intake & Exhaust System

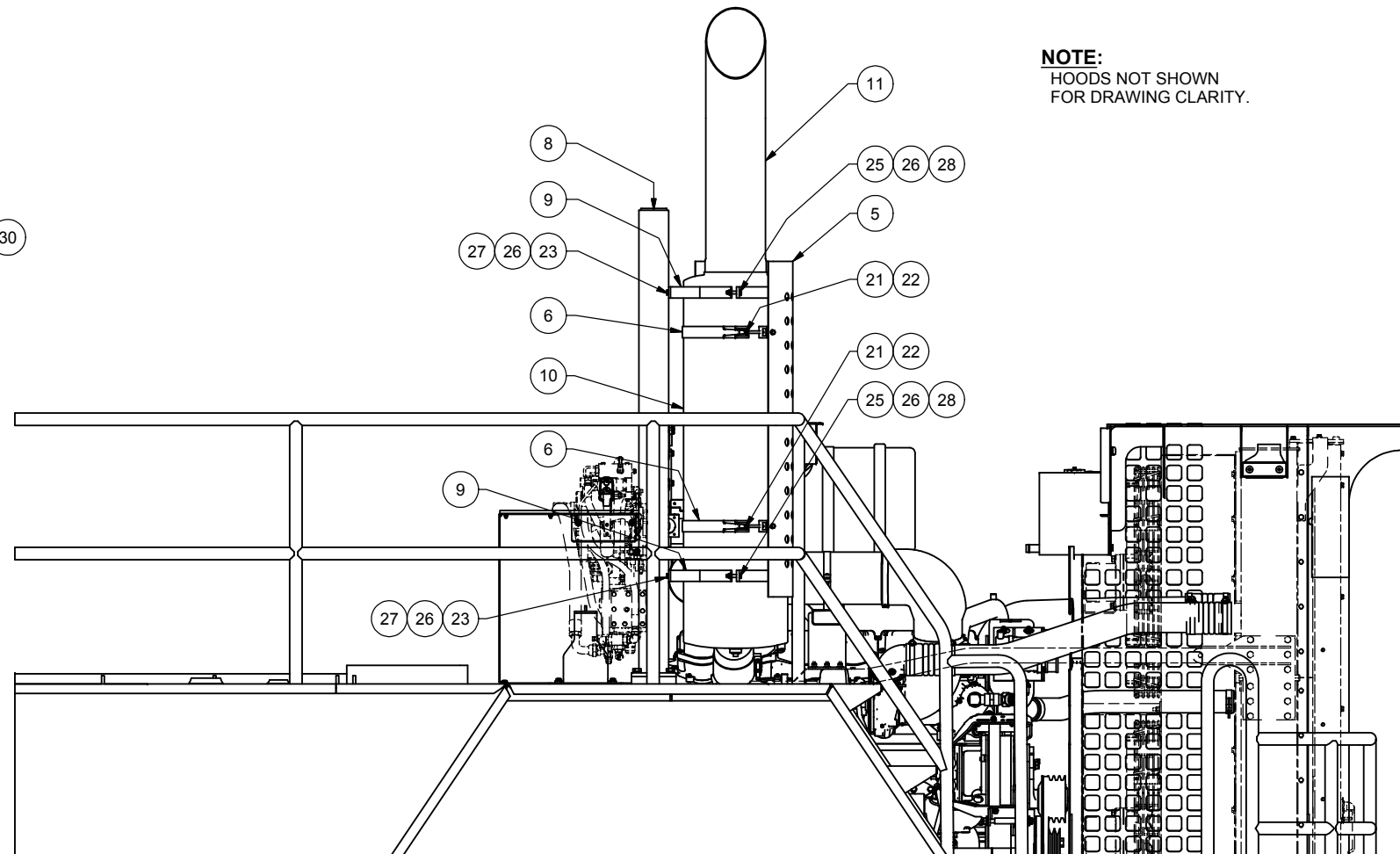
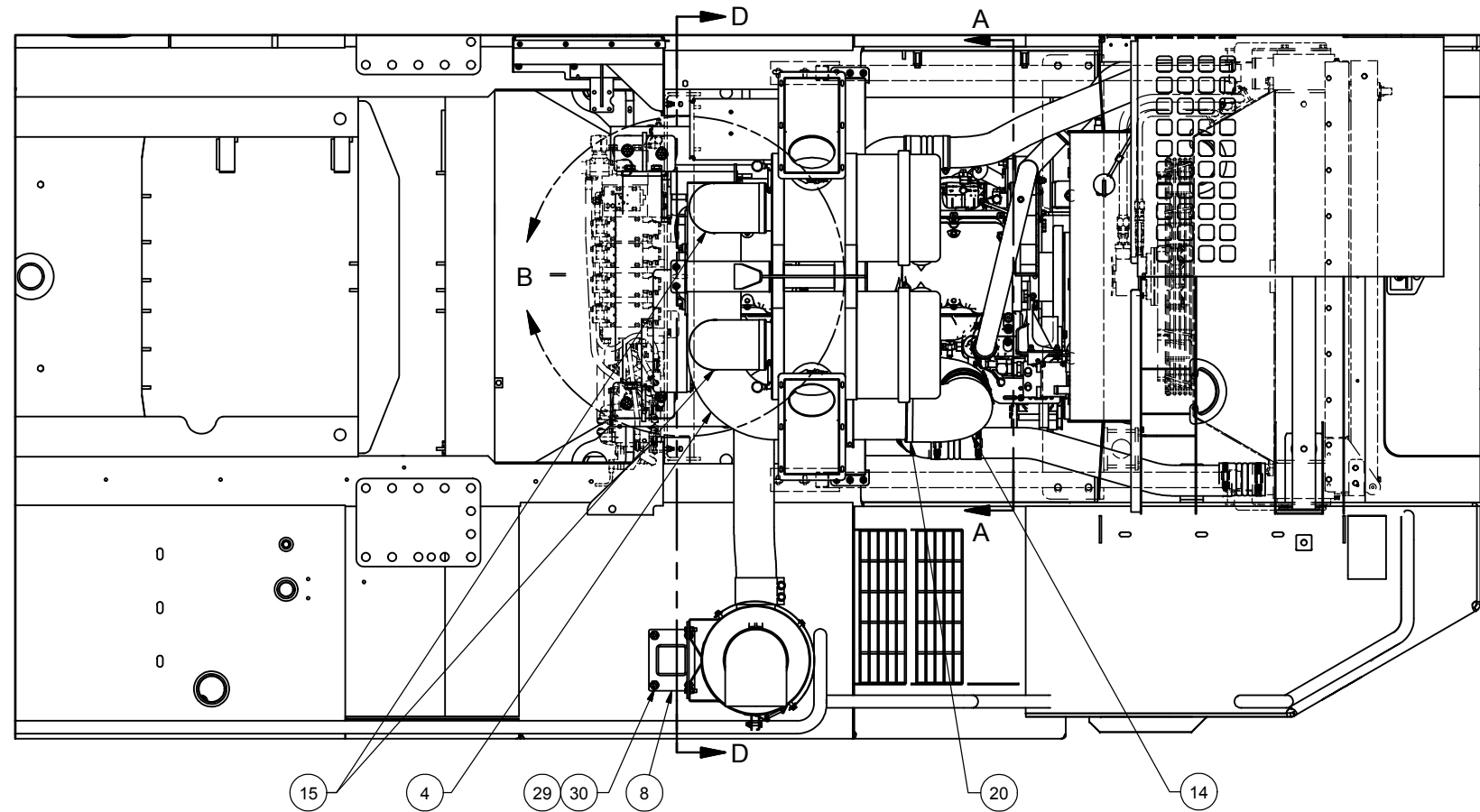
Air Intake & Exhaust System

Item	Part No.	Qty	Description	Item	Part No.	Qty	Description
	585074		Air Intake & Exhaust System				
1	* 256041	2	. Air Cleaner	18	R13803357	4	. T-Bolt Clamp
2	255652	2	. Precleaner, Air Intake	19	207245	6	. T-Bolt Clamp
3	585075	1	. Mounting Bracket	20	210631	1	. T-Bolt Clamp
4	585090	1	. Air Intake Tube	21	R13811020	2	. Capscrew
5	225562	1	. Guard, Muffler	22	R13802914	2	. Hard Washer
6	581319	2	. Bar, Clamp Extension	23	221499W	6	. Capscrew
7	585145	2	. Flange, Intake	24	Y17C-0624	4	. Capscrew
8	581588	1	. Support, Exhaust	25	R13801813	2	. Capscrew
9	215156	6	. Band, Mounting	26	Y27E-06	28	. Washer
10	250643	1	. Muffler	27	237567	16	. Nut, Esna
11	250644	1	. Exhaust Stack	28	R13804124	2	. Locknut
12	580432	1	. Tube	29	Y17C-1024	4	. Capscrew
13	208136	2	. Indicator	30	223694	4	. Lockwasher
14	224354	1	. Elbow	31	19122	2	. Fitting
15	215733	2	. Elbow	32	PPE1250350	1	. Nipple
16	224295	2	. Band, Mounting	33	22951	2	. Fitting

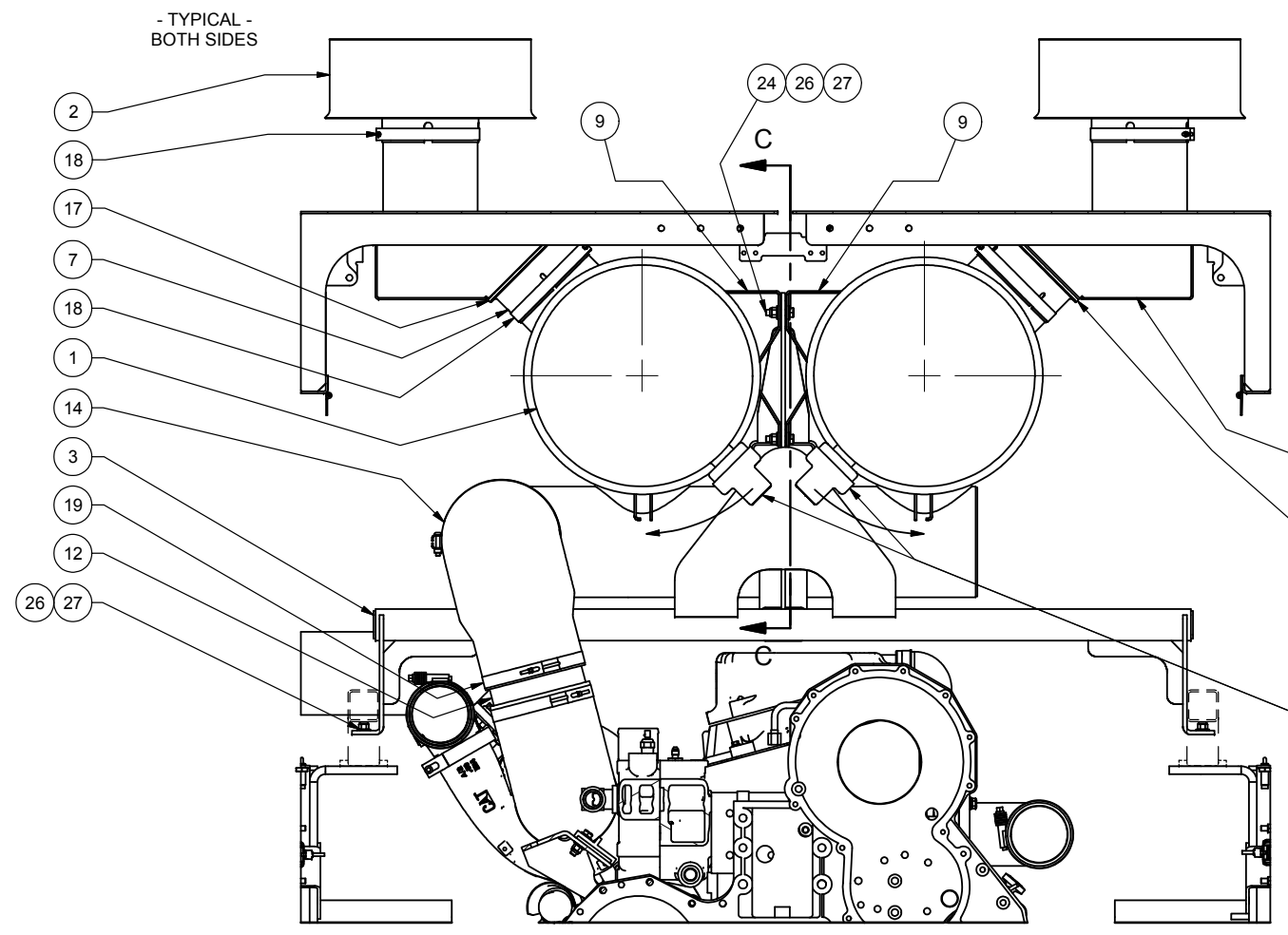
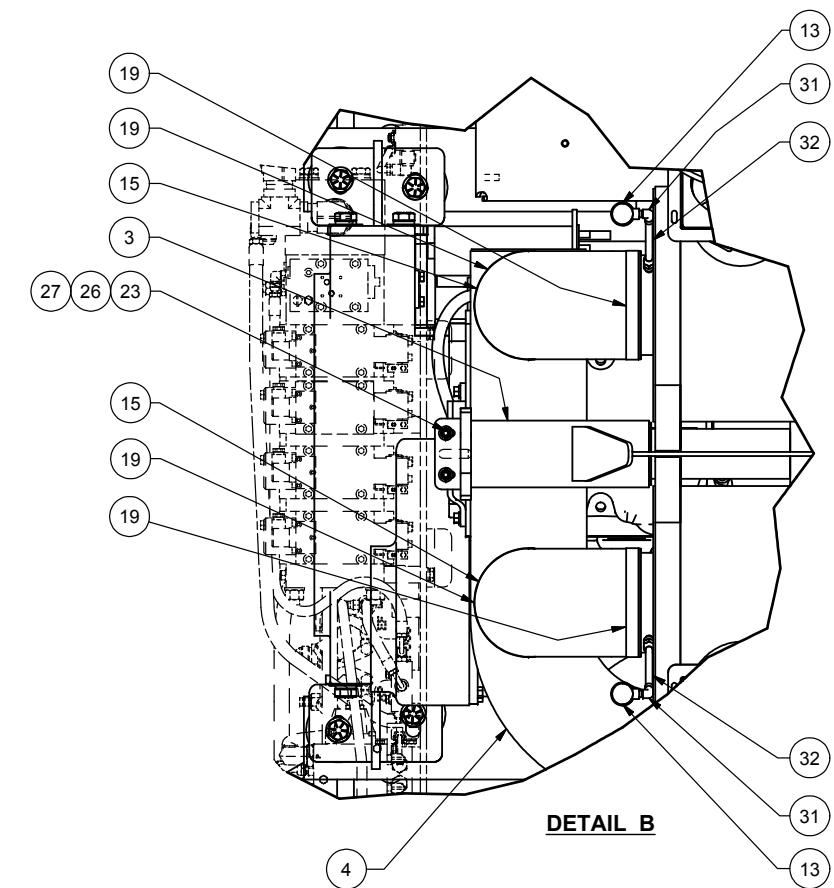
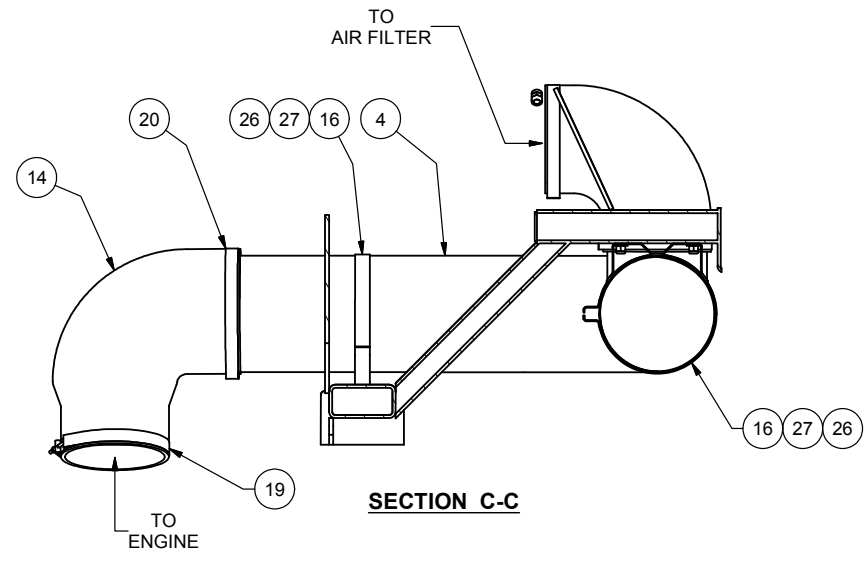
* See Separate Coverage



SECTION D-D



NOTE:
HOODS NOT SHOWN
FOR DRAWING CLARITY.



NOTE:
POSITION AIR BOX SO THAT FULL CONTACT IS MADE WITH SEAL ON AIR CLEANER FLANGE. (BOTH SIDES)

REF.
GASKET, PART OF P/N: 585314
(CALLED OUT ON B.O.M. 585051)

NOTE:
ROTATE VACUATOR VALVES SO THAT THEY ARE PERPENDICULAR TO THE VEHICLE CENTER LINE. (VALVES MUST BE AT THE 3:00 O'CLOCK AND 9:00 O'CLOCK POSITIONS RESPECTIVELY)