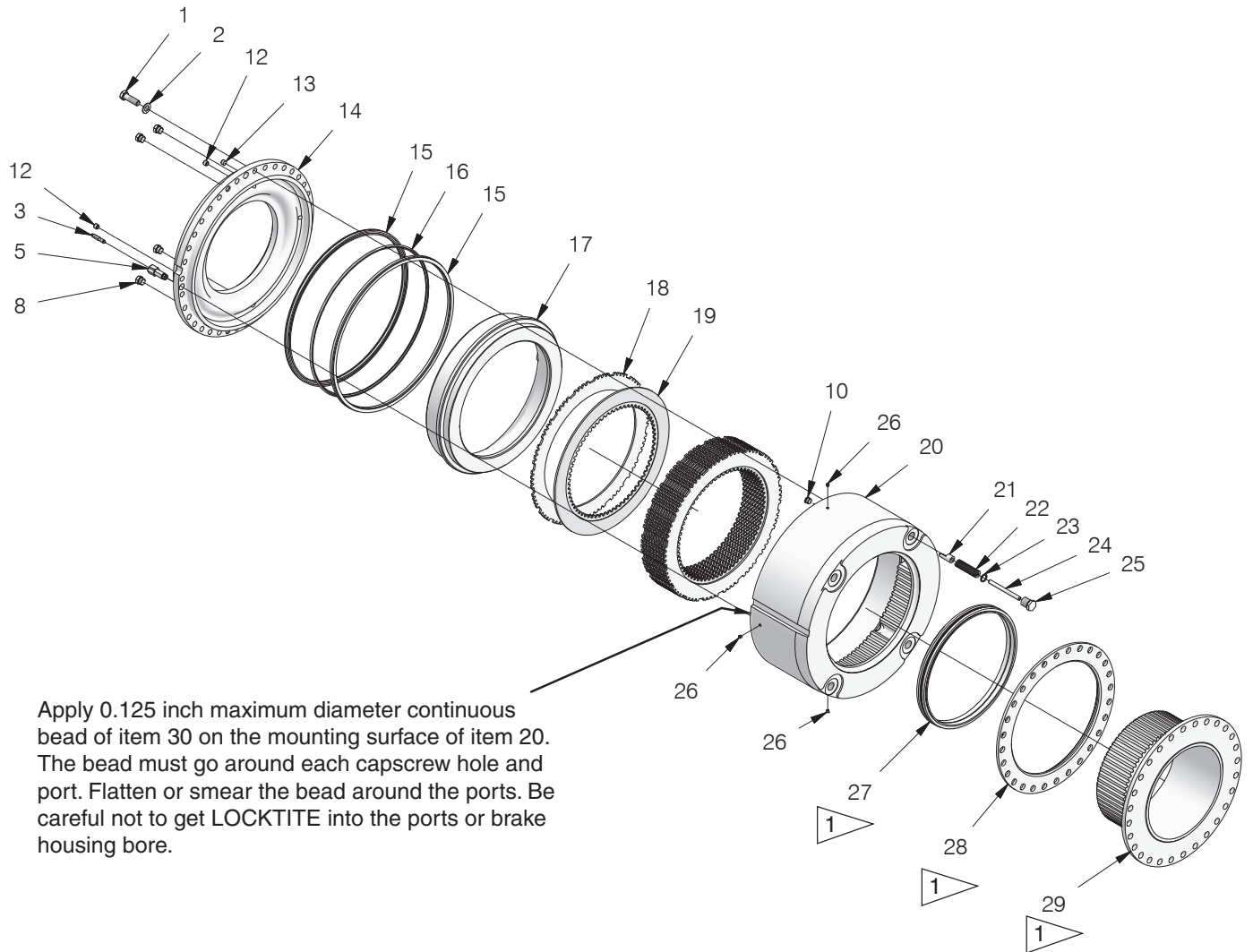


Disc Brake, Wet



Apply 0.125 inch maximum diameter continuous bead of item 30 on the mounting surface of item 20. The bead must go around each capscrew hole and port. Flatten or smear the bead around the ports. Be careful not to get LOCKTITE into the ports or brake housing bore.

1 Items 27,28 and 29 Ship loose of brake assembly. Refer to Wagner service instructions 80-588 for seal installation.

Item	Part No.	Qty	Description	Item	Part No.	Qty	Description
584897 Disc Brake,Wet							
1	R13806363	34	. Capscrew	20	238583	1	. Housing, Brake
2	238570	34	. Flat Washer	21	238584	4	. Guide, Spring
3	238571	1	. Screw, Bleeder	22	238585	4	. Spring
5	238572	1	. Fitting, Brake	23	* 209073	4	. O-Ring
8	215250	4	. Fitting	24	238587	4	. Rod
10	229345	1	. Fitting	25	238588	4	. Plug
12	238575	2	. Plate, Magnetic	26	242230	3	. Fitting
13	R13801762	1	. Fitting	27	* 238590	1	. Seal Assembly, Oil
14	584898	1	. Cover	28	238591	1	. Retainer
15	* 238578	2	. Seal	29	238592	1	. Driver
16	240186	1	. Spring, Spacer	30	* 236308	1 Can	. Silicone, Superflex Ultra Blue Loctite
17	584899	1	. Piston				
18	590060	11	. Disc, Brake				
19	* 258799	10	. Disc, Friction				

* Included In Service Kit 593415