

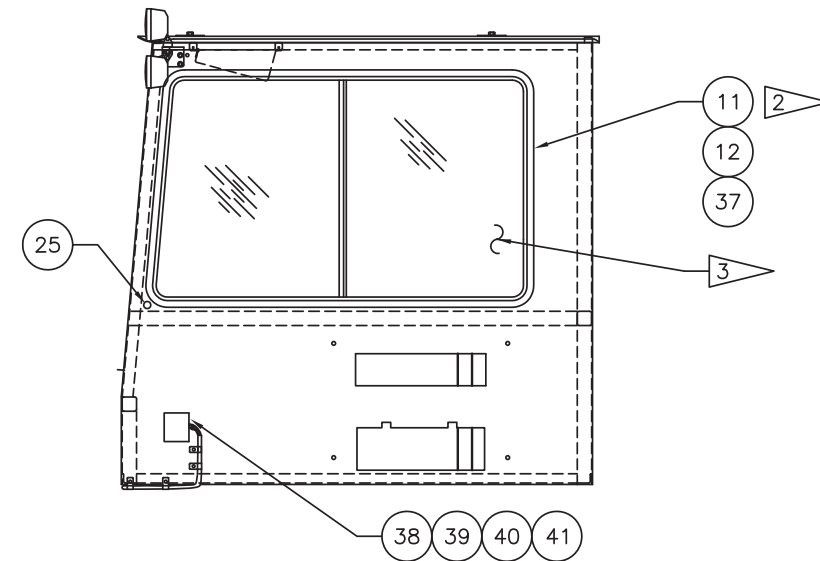
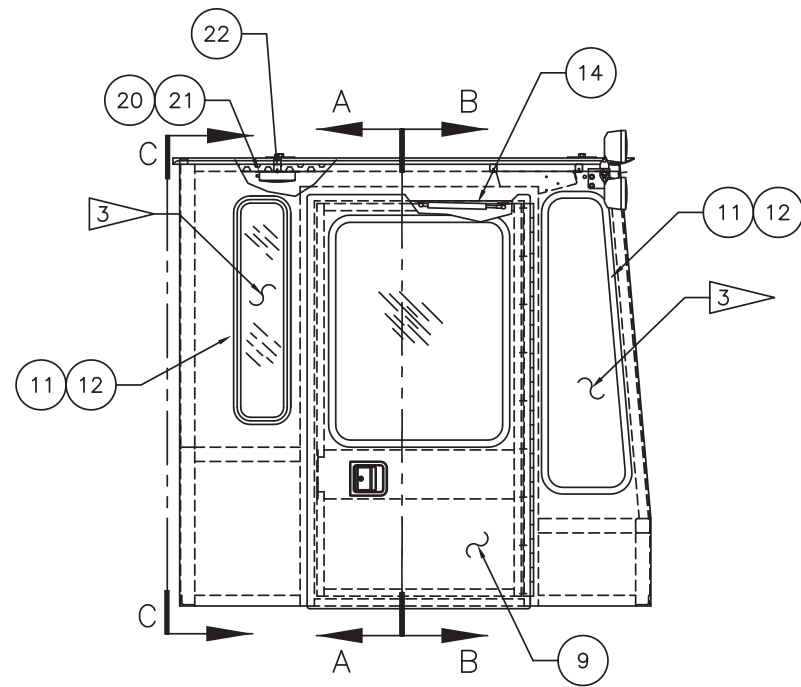
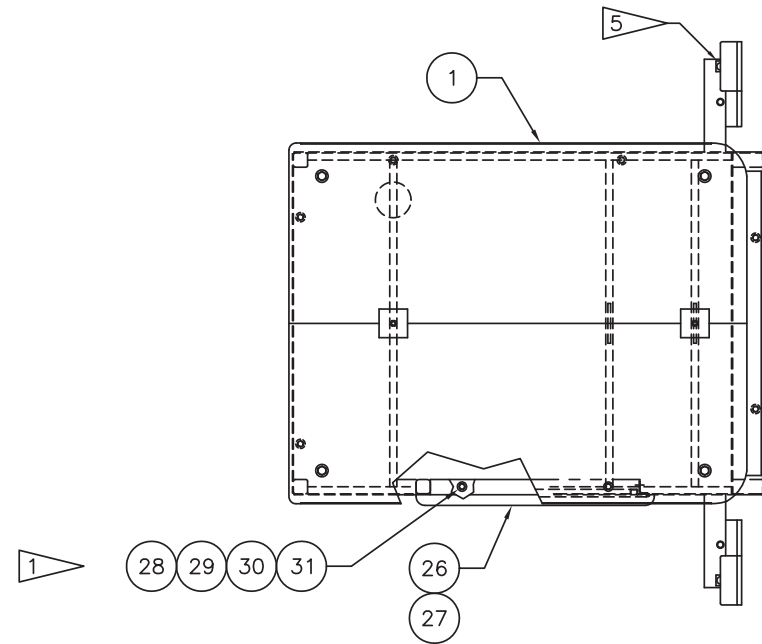
---

Cab Assembly

## Cab Assembly

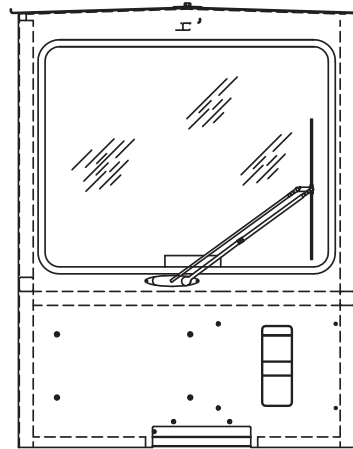
Item	Part No.	Qty	Description	Item	Part No.	Qty	Description
	<b>584634</b>		<b>Cab Assembly</b>				
1	582861	1	. Cab	20	570390	1	. Light, Dome
2	505159	1	. Decal	21	219435	4'	. Wire
3	557341	1	. Decal	22	223154	2	. Screw
4	528880	1	. Decal	24	* 582699	1	. Insulation Installation, Cab
5	576856	1	. Decal	25	227299	1	. Knockout Plate
6	* 584635	1	. Panel Assembly, Overhead	26	569146	1	. Plate, Threshold
7	* 579757	1	. Wiper Installation, Front	27	09420904	3	. Capscrew
8	* 579758	1	. Wiper Installation, Rear	28	200454W	8	. Capscrew
9	* 579942	1	. Door Assembly/Installation, Cab	29	570391	8	. Washer
11	203037	55'	. Molding, Locking Key	30	224202	8	. Nut, Esna
12	200326	55'	. Molding, Self Lock	31	222615	8	. Washer
13	568622	3'	. Duct	32	234757	8	. Capscrew
14	* 578754	1	. Gas Spring Installation	33	00103339	8	. Washer
15	239161	1	. Fan, Defroster	35	240983	2	. Insert
16	219405	3'	. Wire	36	222906	5	. Insert
17	00109451	3	. Machine Screw	37	575151	1	. Decal
18	00103338	3	. Washer	38	240106	1	. Horn, Forward
19	00190637	3	. Nut, Esna	39	R13806527	2	. Capscrew
				41	R13811445	4	. Washer

\* See Separate Coverage



- 1 ▸ INSERT CAPSCREWS UP FROM THE COWL FLOOR AT INSTALLATION.
- 2 ▸ INSTALL WINDOW WITH LOCKING CORD ON INSIDE OF CAB; LEAVE A 4-6" PIECE OF CORD EXPOSED AT THE FRONT LOWER CORNER OF THE WINDOW. CAP CORD END WITH RED VINYL CAP AND PLACE EMERGENCY EXIT DECAL (ITEM 37) ON CONSOLE NEARBY;
- 3 ▸ SEE M/S FOR CAB GLASS OPTION;

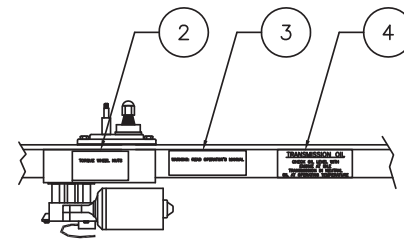
VIEW C-C



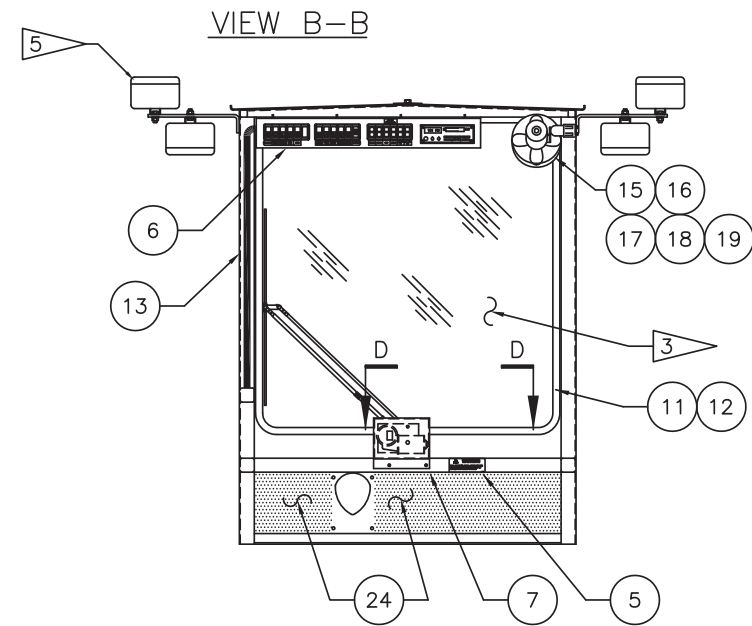
**NOTE:**

INFORMATION IS PROVIDED FOR REWORK OF CAB SHOULD BOLT PATTERN NOT BE PRESENT. DRILL  $\phi$ .530, 4-PLACES AS SHOWN. INSTALL 4) 222470 1/4-20 UNC INSERTS;

REFER TO 582441 HYD SYS; BRAKES (SEE M/S) FOR BRAKE VALVE PLATE INFORMATION;

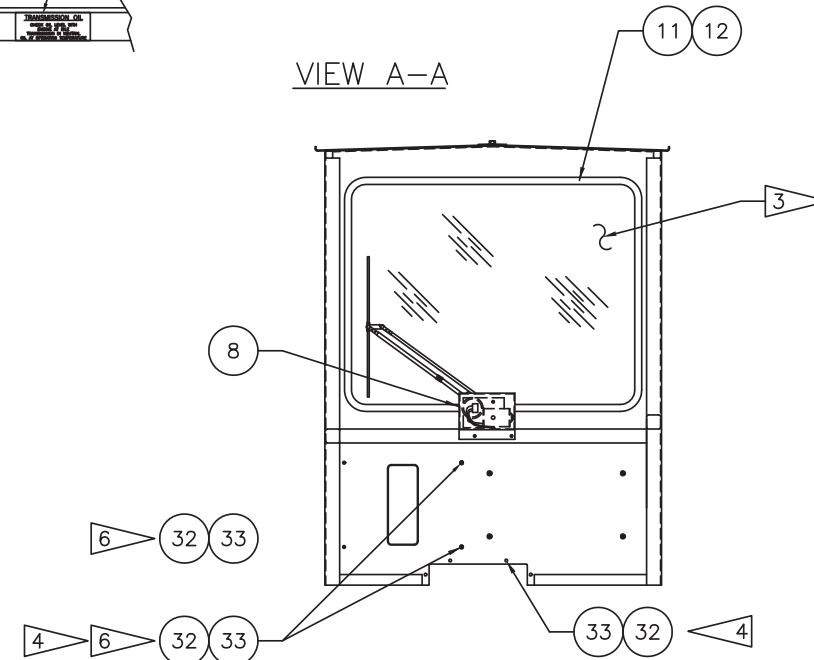


VIEW D-D



VIEW B-B

VIEW A-A



- 4 WHEN MATING THE COWL ASS'Y TO THE CAB ASS'Y, SEAL THE JUNCTION BOX AND COWL TUNNEL TO THE REAR WALL OF THE CAB WITH RTV SILICONE SEALER.
- 5 SEE M/S FOR LIGHTING OPTION GROUP;
- 6 USE 2 EACH OF ITEM 32 AND 33 TO ATTATCH JUNCTION BOX TO CAB FROM INSIDE. INSTALL OTHER HARDWARE FROM EXTERIOR OF CAB, ONCE JUNCTION BOX IS HELD IN PLACE;