

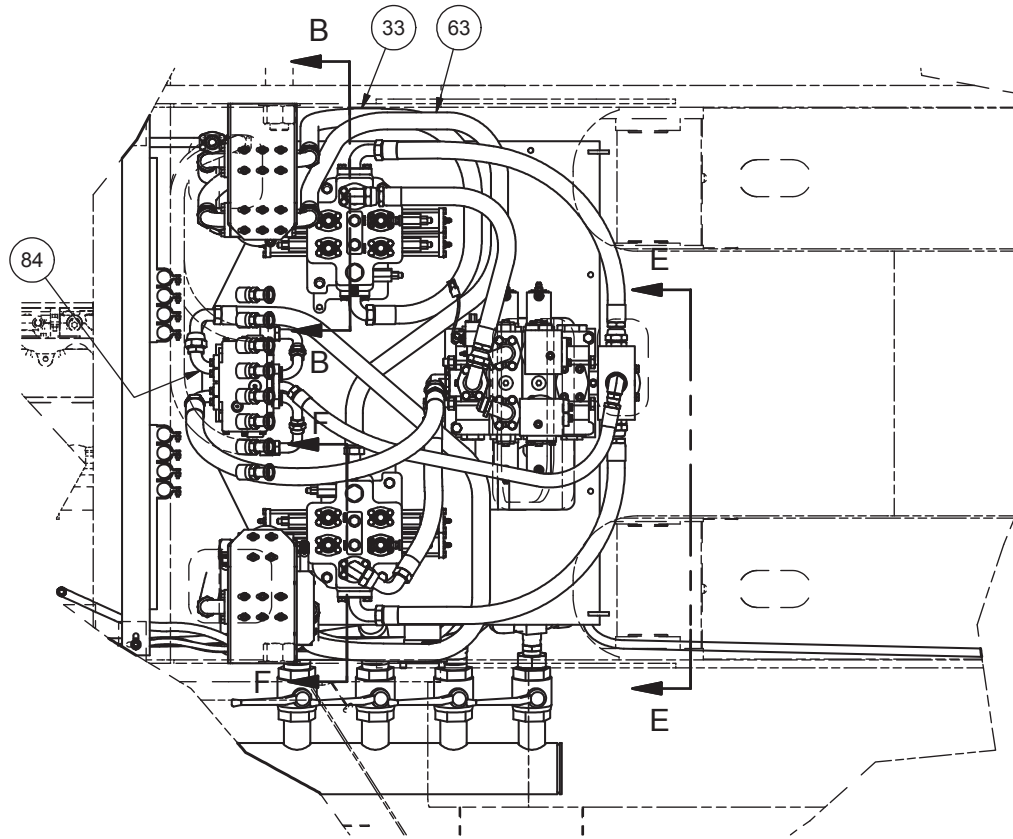
---

Hydraulic System - Chassis

## Hydraulic System - Chassis

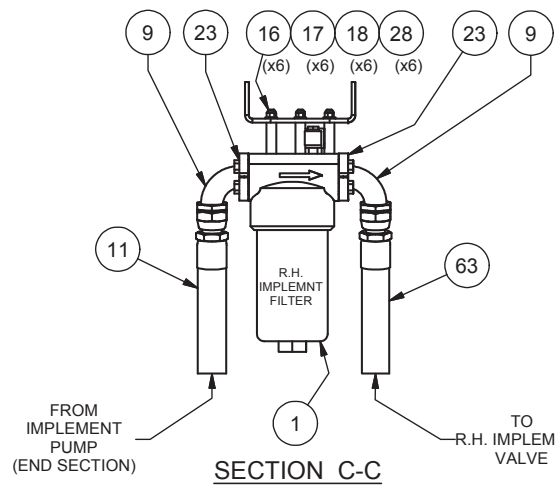
Item	Part No.	Qty	Description	Item	Part No.	Qty	Description
	<b>584613</b>		<b>Hydraulic System - Chassis</b>				
1	* 228201	3	. Pressure Filter	28	563204	22	. Spacer
2	228321	4	. Ball Valve	33	232294	1	. Hose Assembly
3	581538	1	. Manifold Assembly,Suction	34	255441	1	. Hose Assembly
4	221940	3	. Fitting	35	255442	1	. Hose Assembly
5	215279	5'	. Suction Hose	36	221894	3	. Fitting, Ff
6	201440	10'	. Suction Hose	37	209784	2	. Fitting
7	225663	1	. Fitting	38	* 228200	1	. Pressure Filter
8	225661	2	. Kit, Split Flange	39	12666	1	. Fitting
	200607	4	.. Lockwasher	40	253326	2	. Coupler, Male
	203528	1	.. O-Ring	44	224298	1	. Fitting
	229082	4	.. Capscrew	45	209067	3	. Fitting
	230769	2	.. Clamp Half	47	220794	1	. Fitting
9	14274	6	. Fitting	48	209157	1	. Fitting
10	211551	2	. Fitting	49	209179	1	. Fitting
11	229662	1	. Hose Assembly	50	* 581404	1	. Manifold Assembly
12	232292	1	. Hose Assembly	52	255437	1	. Hose Assembly
13	226925	1	. Hose Assembly	53	255438	1	. Hose Assembly
14	229187	4	. Hose Clamp	54	R13811020	2	. Capscrew
15	216042	12	. T-Bolt Clamp	55	201566	2	. Lockwasher
16	242368	22	. Stud	56	* 243457	2	. Filter, Insert
17	R13811191	22	. Locknut	57	209488	4	. Fitting
18	R13806980	22	. Flat Washer	58	15280	2	. Fitting
19	579168	1	. Elbow Weldment	59	233136	1	. Hose Assembly
20	221630W	4	. Capscrew	60	22074	1	. Hose Assembly
21	00103325	4	. Lockwasher	63	255443	1	. Hose Assembly
22	203543	1	. O-Ring	68	255439	2	. Hose Assembly
23	11767	6	. Kit, Split Flange	70	R13810997	2	. Capscrew
	200604	4	.. Washer	71	R13811443	2	. Flat Washer
	203516	1	.. O-Ring	73	255440	2	. Hose Assembly
	209537	2	.. Clamp Half	77	581018	1	. Plate
	222379	4	.. Capscrew	79	245334	1	. Indicator, Elec/Vis
24	220532	3	. Fitting	80	578466	2	. Adapter
25	R14377	1	. Fitting	82	209083	2	. Fitting
26	R13430	1	. Check Valve	83	228455	1	. Hose Assembly
27	209215	1	. Fitting	84	224780	1	. Fitting

\* See Separate Coverage

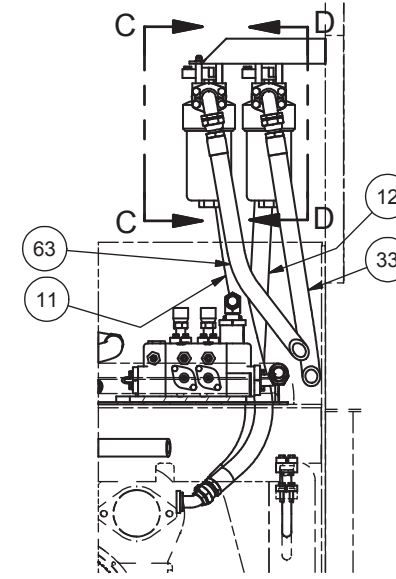


DETAIL A

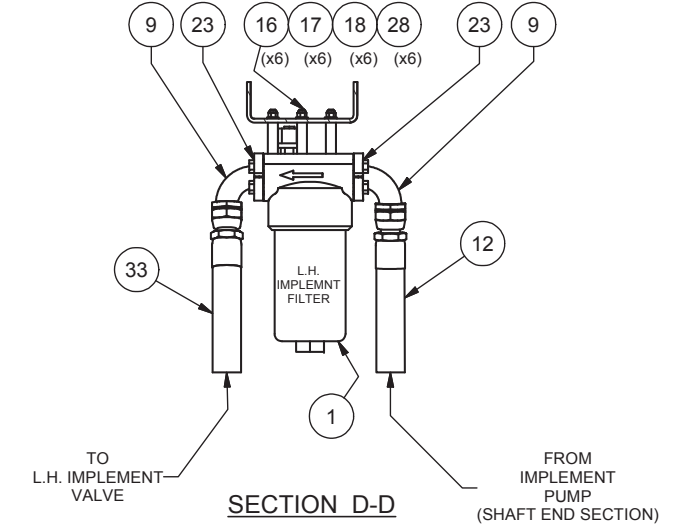
NOTE:  
AUX VALVES-TO-BOOM HOSES  
OMITTED FOR CLARITY.  
ON/OFF BALL VALVES SHOWN  
IN CLOSED CONDITION.



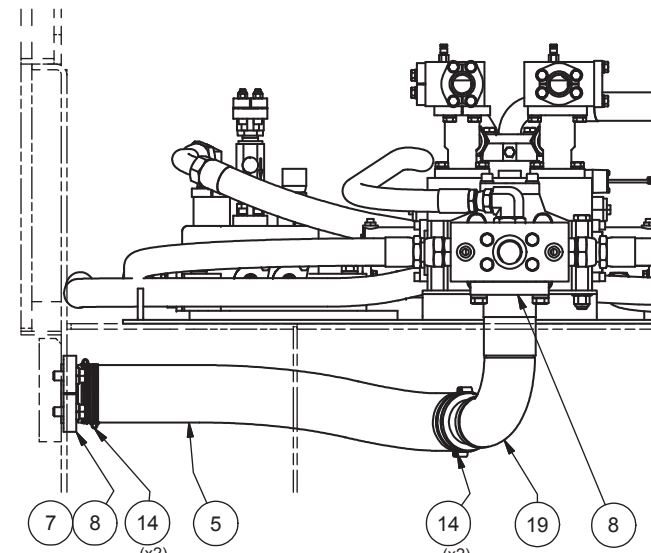
SECTION C-C



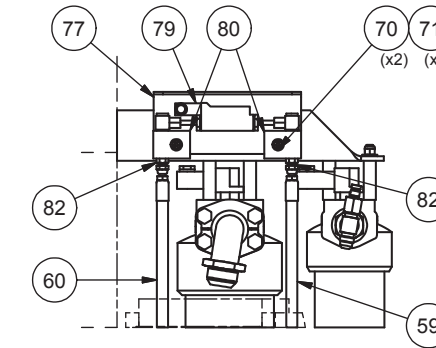
SECTION B-B



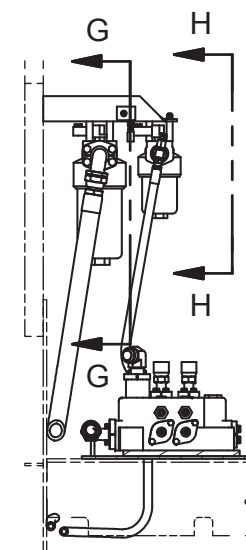
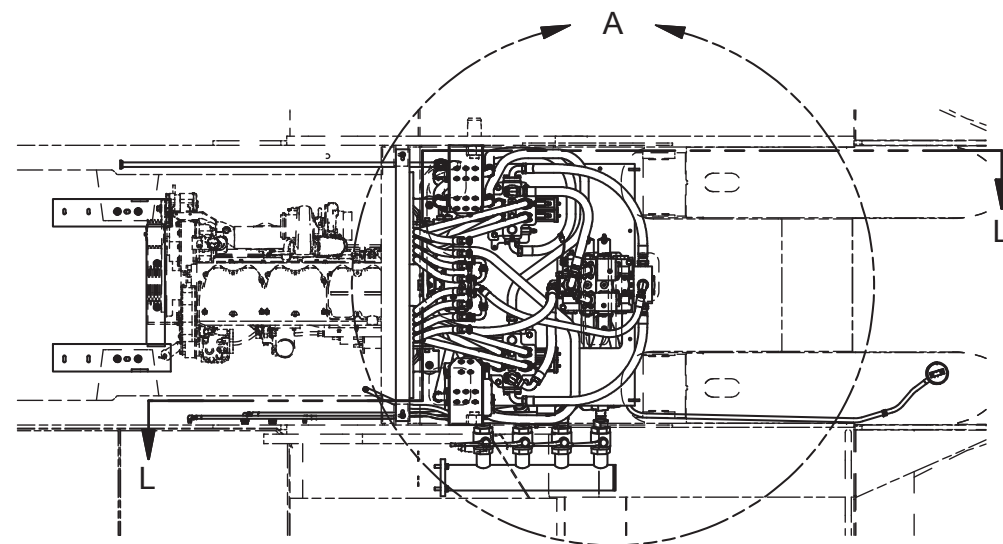
SECTION D-D



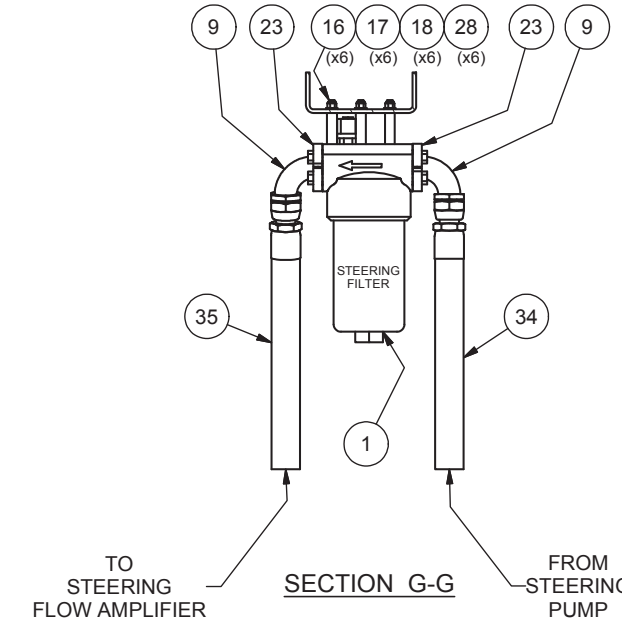
SECTION E-E



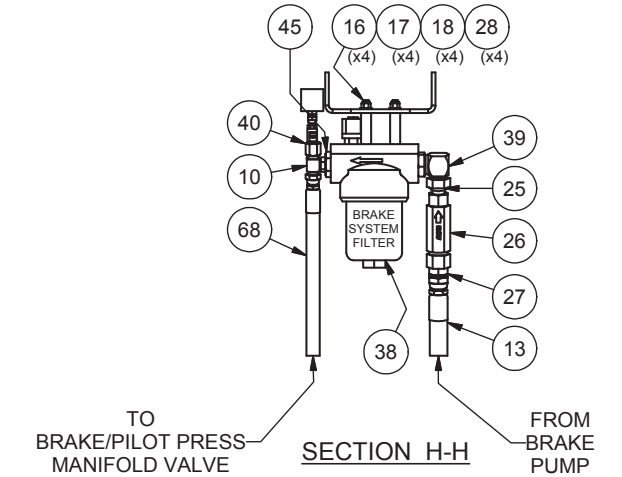
SECTION K-K



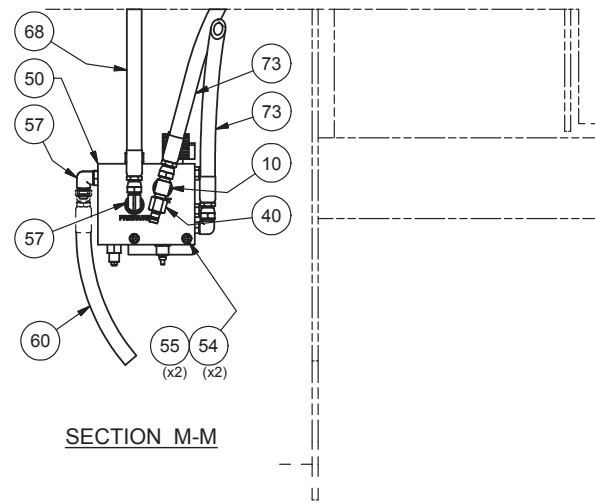
SECTION F-F



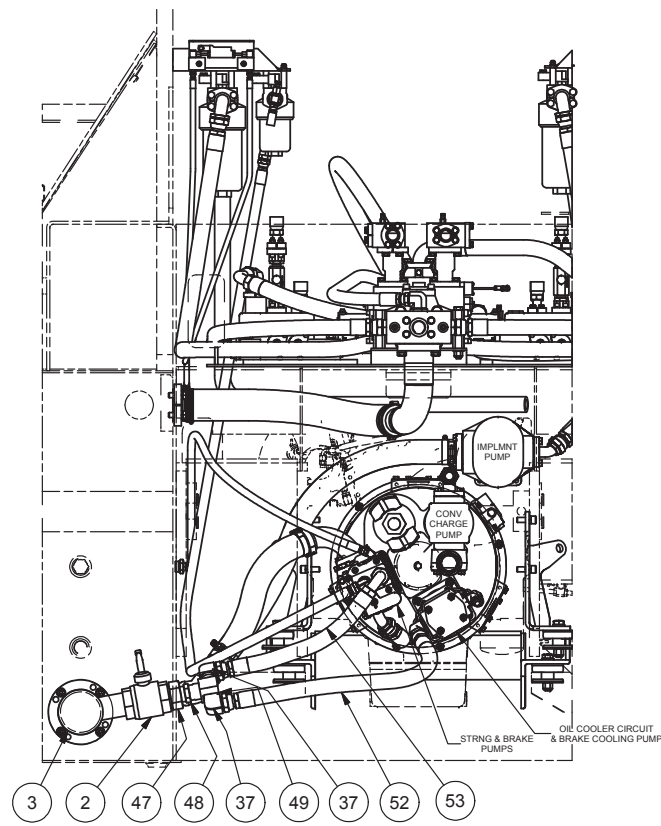
SECTION G-G



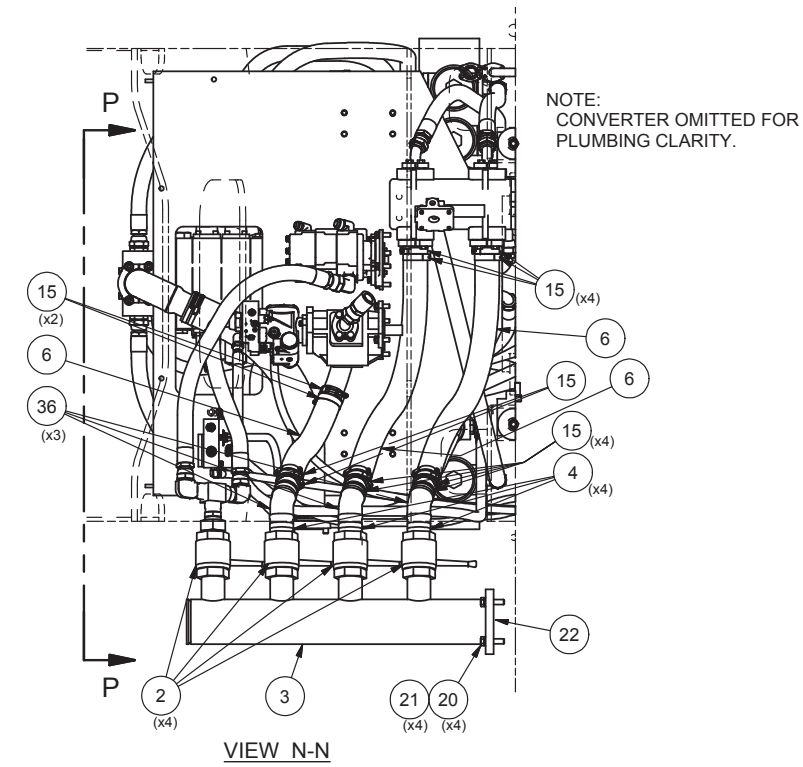
SECTION H-H



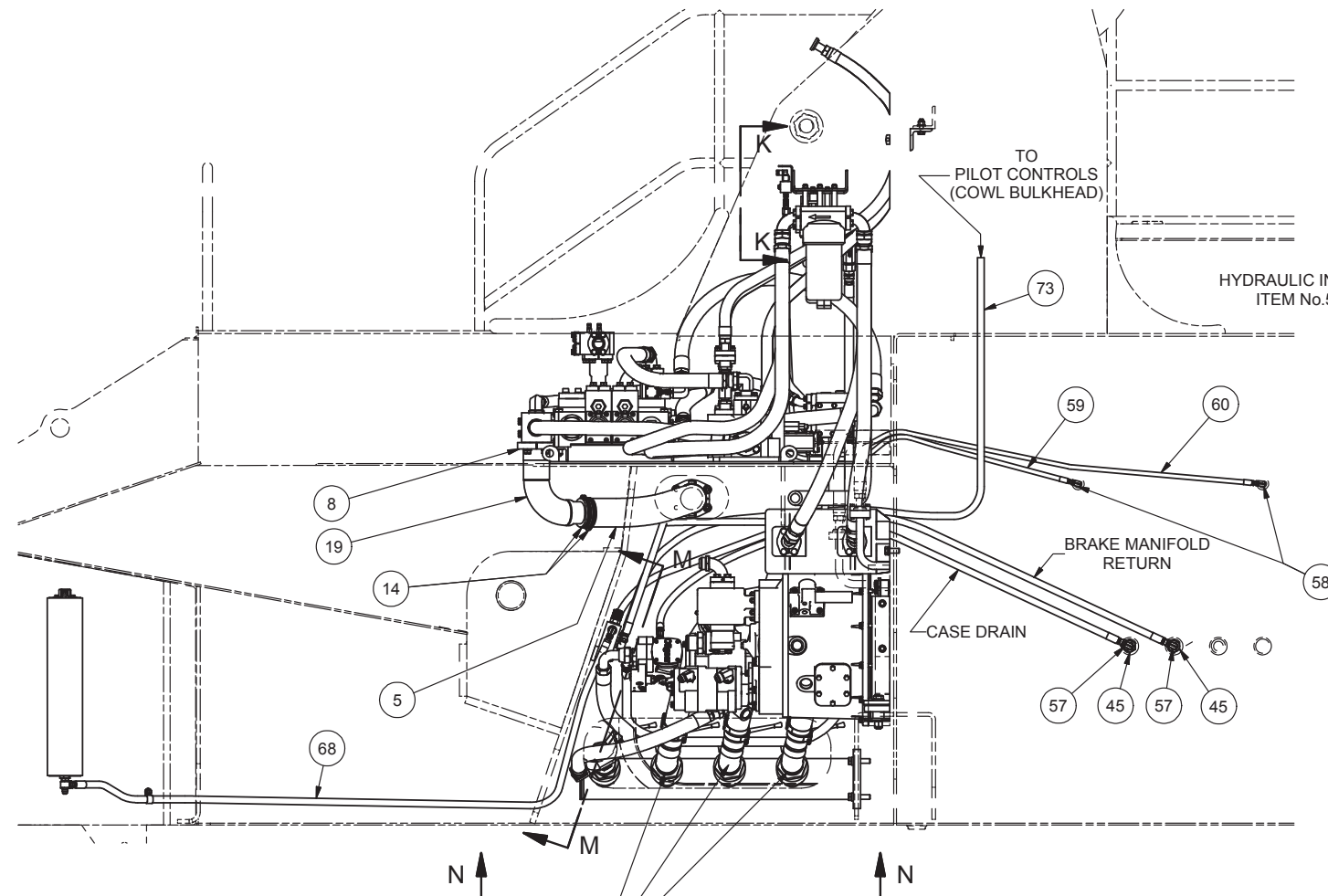
SECTION M-M



VIEW P-P

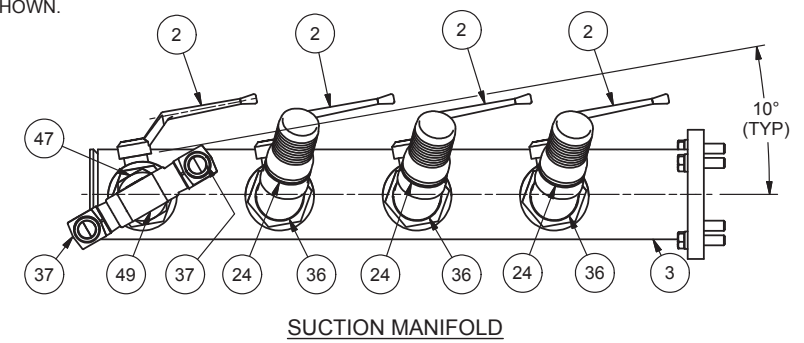


VIEW N-N



SECTION L-L

NOTE:  
ELBOWS ARE CLOKED AT 15° F.T.D.C.  
(3) PLACES



SUCTION MANIFOLD

