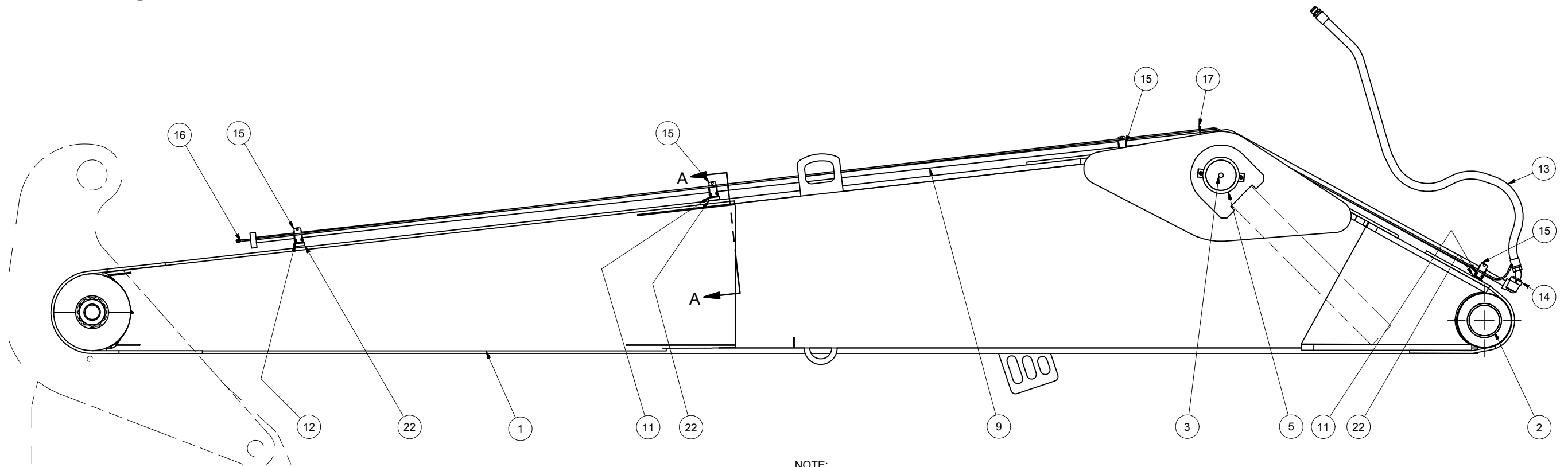
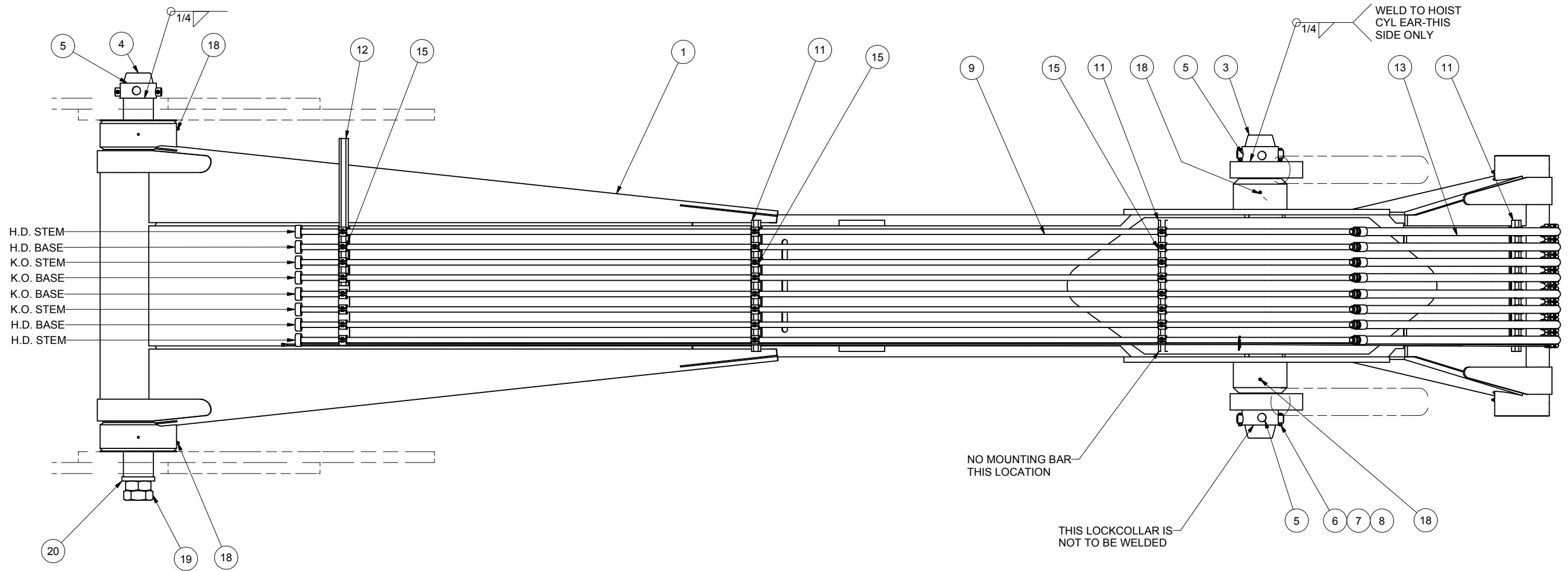


---

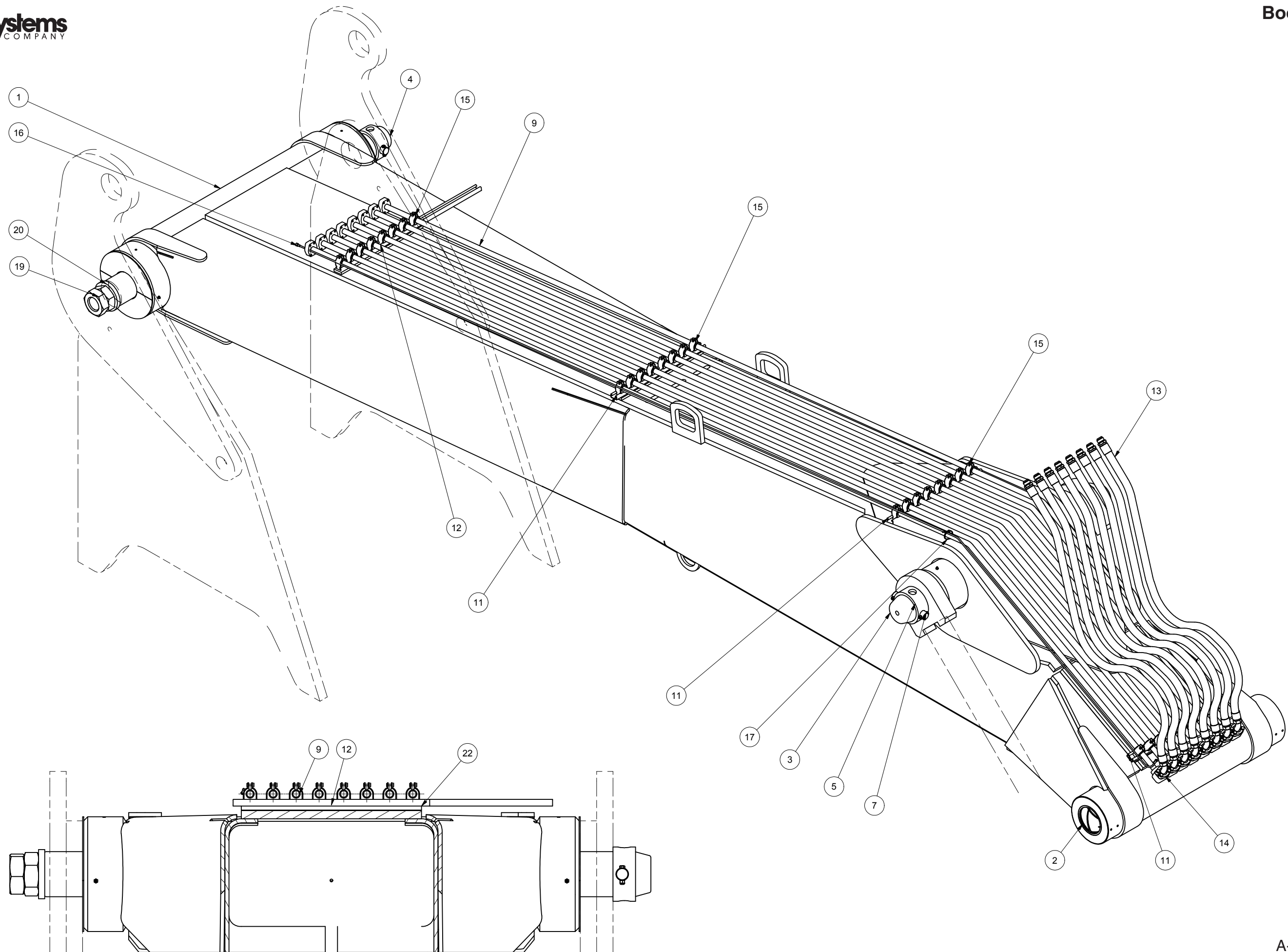
Boom Assembly

## Boom Assembly

Item	Part No.	Qty	Description	Item	Part No.	Qty	Description
	<b>584607</b>		<b>Boom Assy</b>				
1	566804	1	. Boom, Flat		202201	4	.. Capscrew
2	561170	6	. Bushing		203443	1	.. O-Ring
3	566920	1	. Pin		209535	2	.. Clamp Half
4	563504	1	. Pin	15	231250	32	. Clamp
5	563243	3	. Lock Collar	16	552961	1	. Wire Harness
6	223654	6	. Locknut	17	213257	40	. Tie Strap
7	563280	3	. Pin	18	00191758	6	. Fitting, Lube
8	R13811039	6	. Capscrew	19	219928	2	. Jam Nut
9	584667	8	. Tube	20	561846	1	. Washer
11	572772	3	. Channel	21	567077	2	. Shim
12	572773	1	. Channel	22	570374	3	. Bar
13	255086	8	. Hose Assy	23	567078	2	. Shim
14	11759	8	. Kit, Split Flange	24	567079	2	. Shim
	201567	4	.. Lockwasher				



NOTE:  
SHIM BOOM TO ELIMINATE MOVEMENT GREATER THEN 0.125".  
USE ITEMS 21, 23 & 24 AS REQUIRED.  
WELDS TO BE 0.13 UNLESS OTHERWISE NOTED.



SECTION A-A