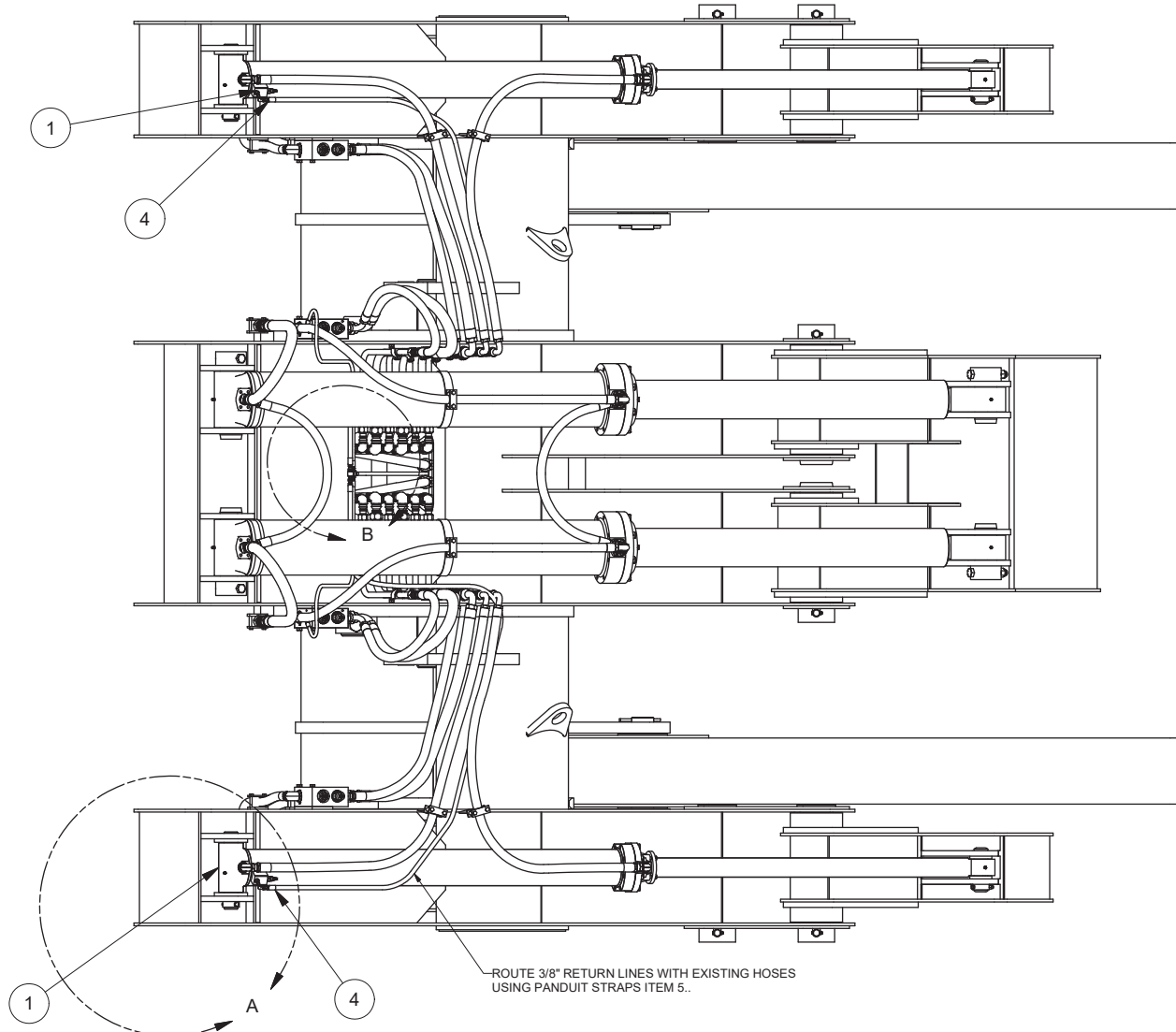
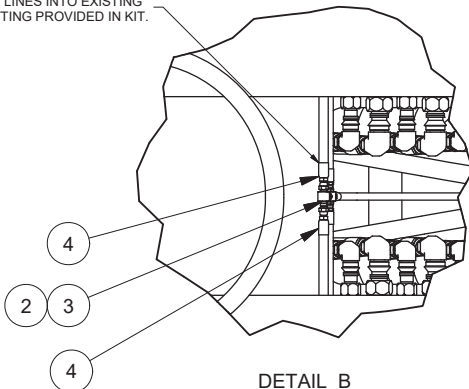


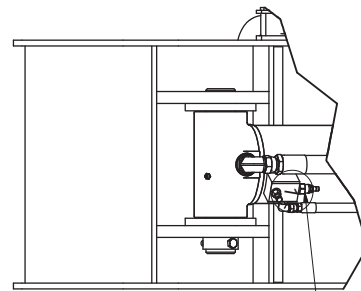
Kit, Auxiliary HD Cylinder



CONNECT 3/8" RETRUN LINES INTO EXISTING 3/8" RETURN USING FITTING PROVIDED IN KIT.



DETAIL B



DETAIL A

RELIEF VALVE BENCH SET AT ASSEMBLY TO 3000 PSI CRACKING PRESSURE. RETURN LINE CONNECTED TO HYDRAULIC RETURN MANIFOLD ON VALVE PLATE.

Item	Part No.	Qty	Description	Item	Part No.	Qty	Description
	<b>584491</b>		<b>Kit, Aux HD Cylinder</b>				
1	* 600258	2	. Cylinder Assy, w/Cushion Reliefs	4	231398	2	. Hose Assembly
2	230778	1	. Fitting	5	249329	50	. Cable Tie
3	23578	1	. Fitting				

\* See Separate Coverage