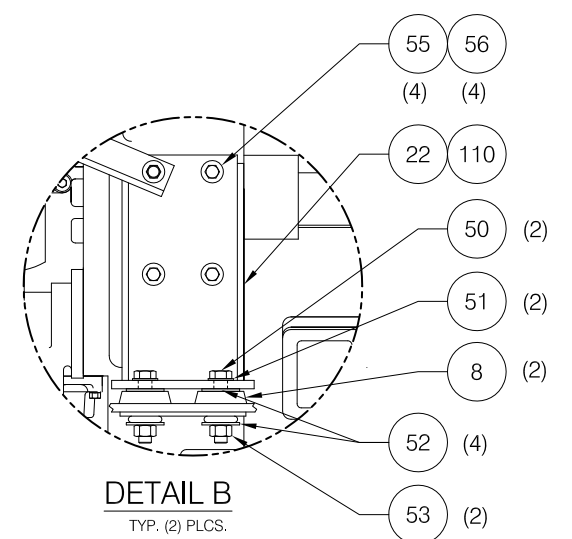
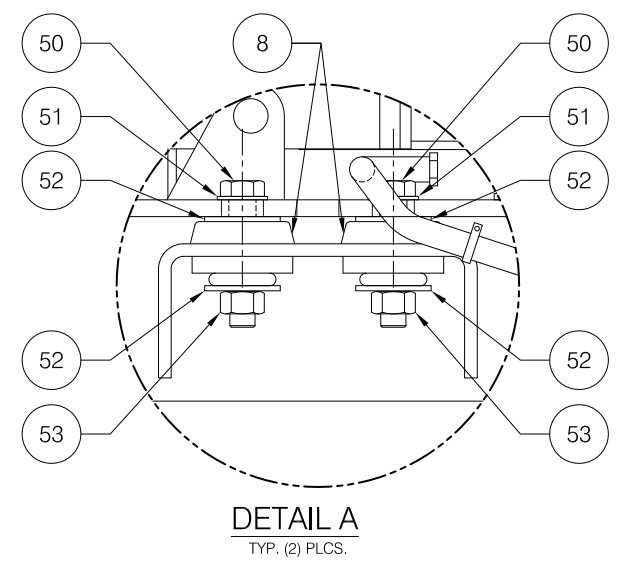
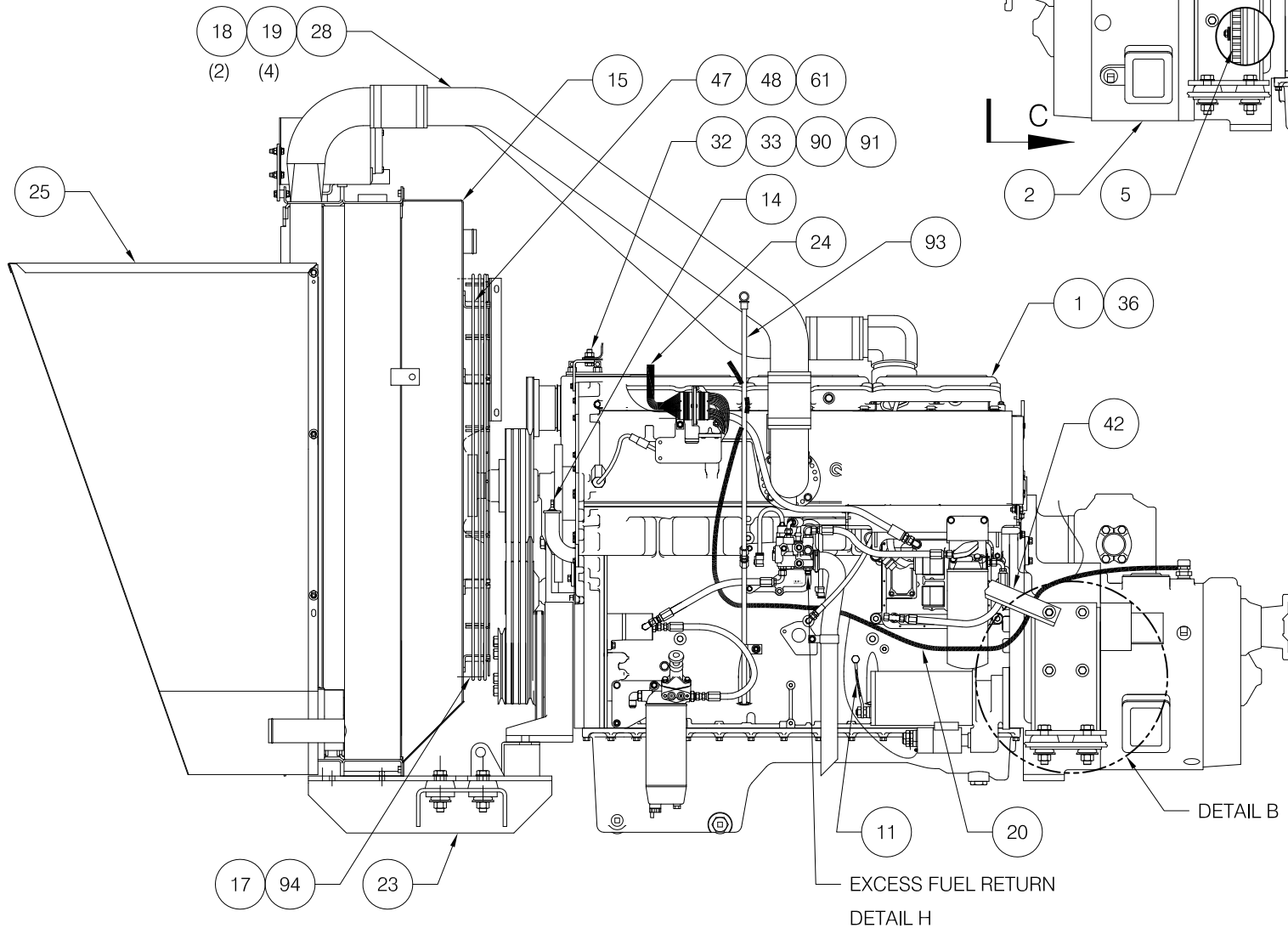
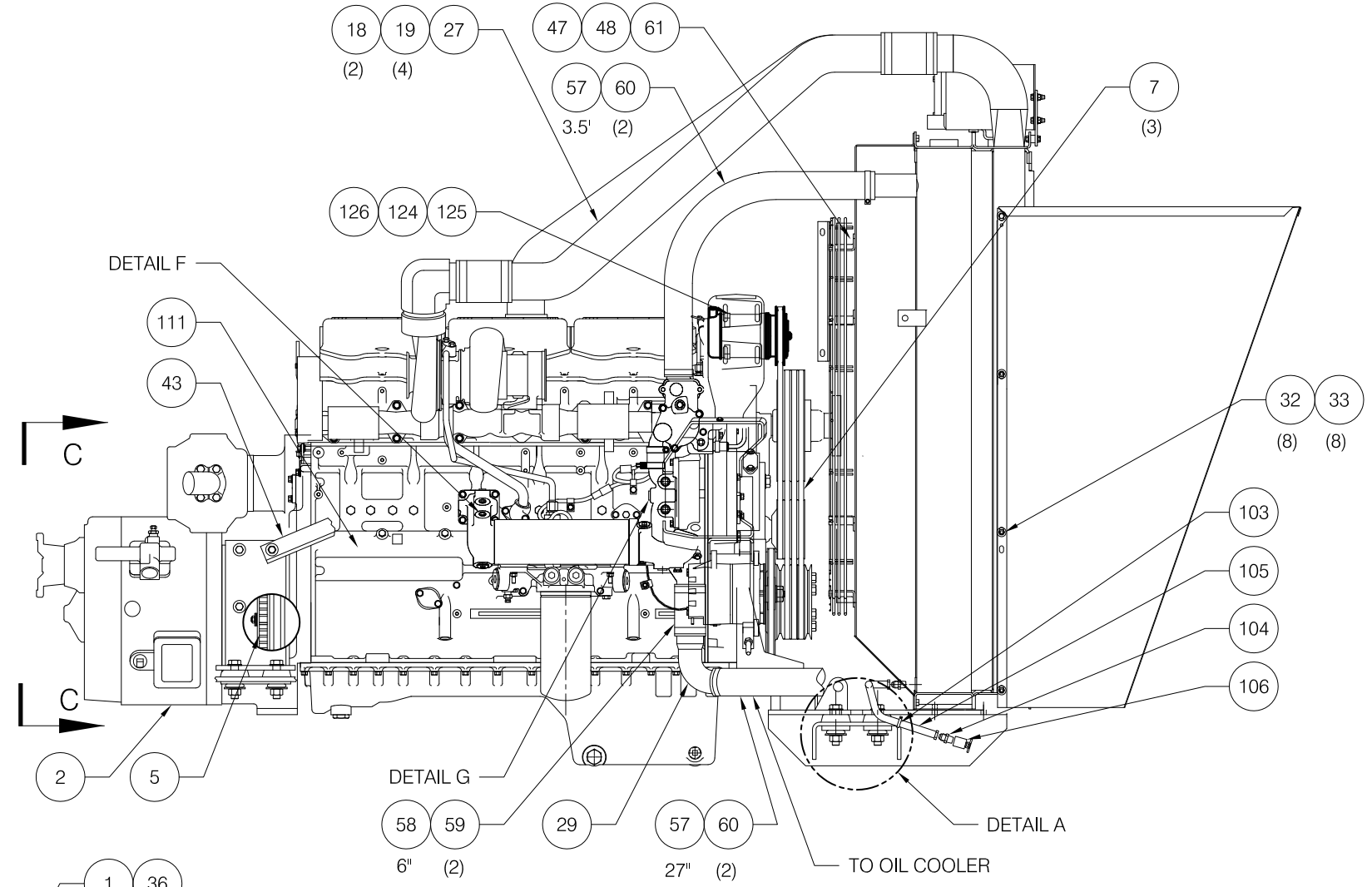
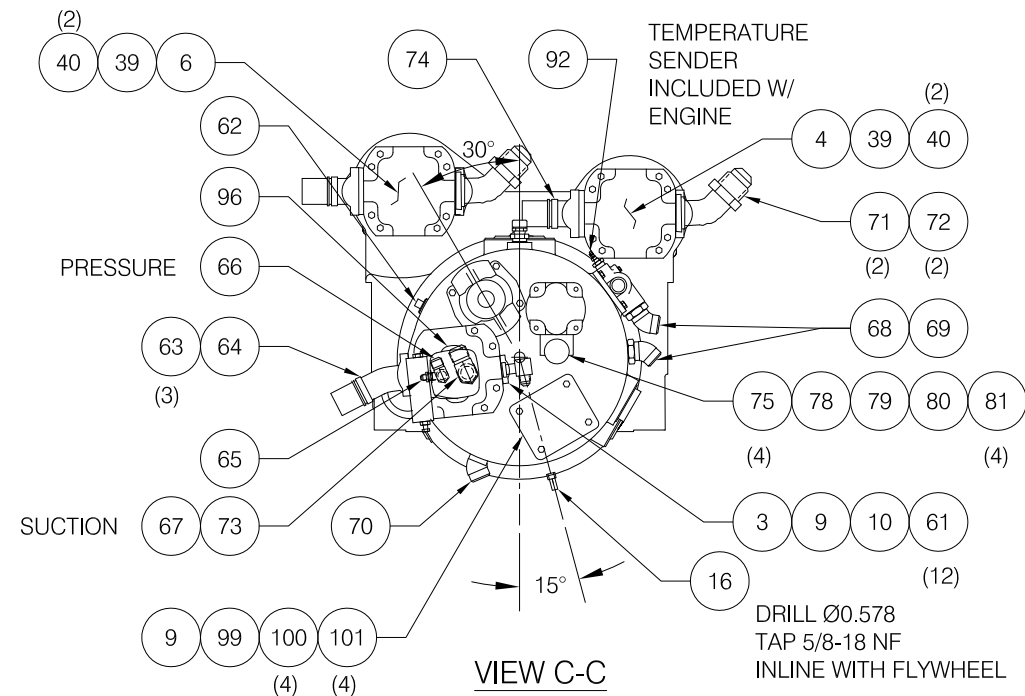
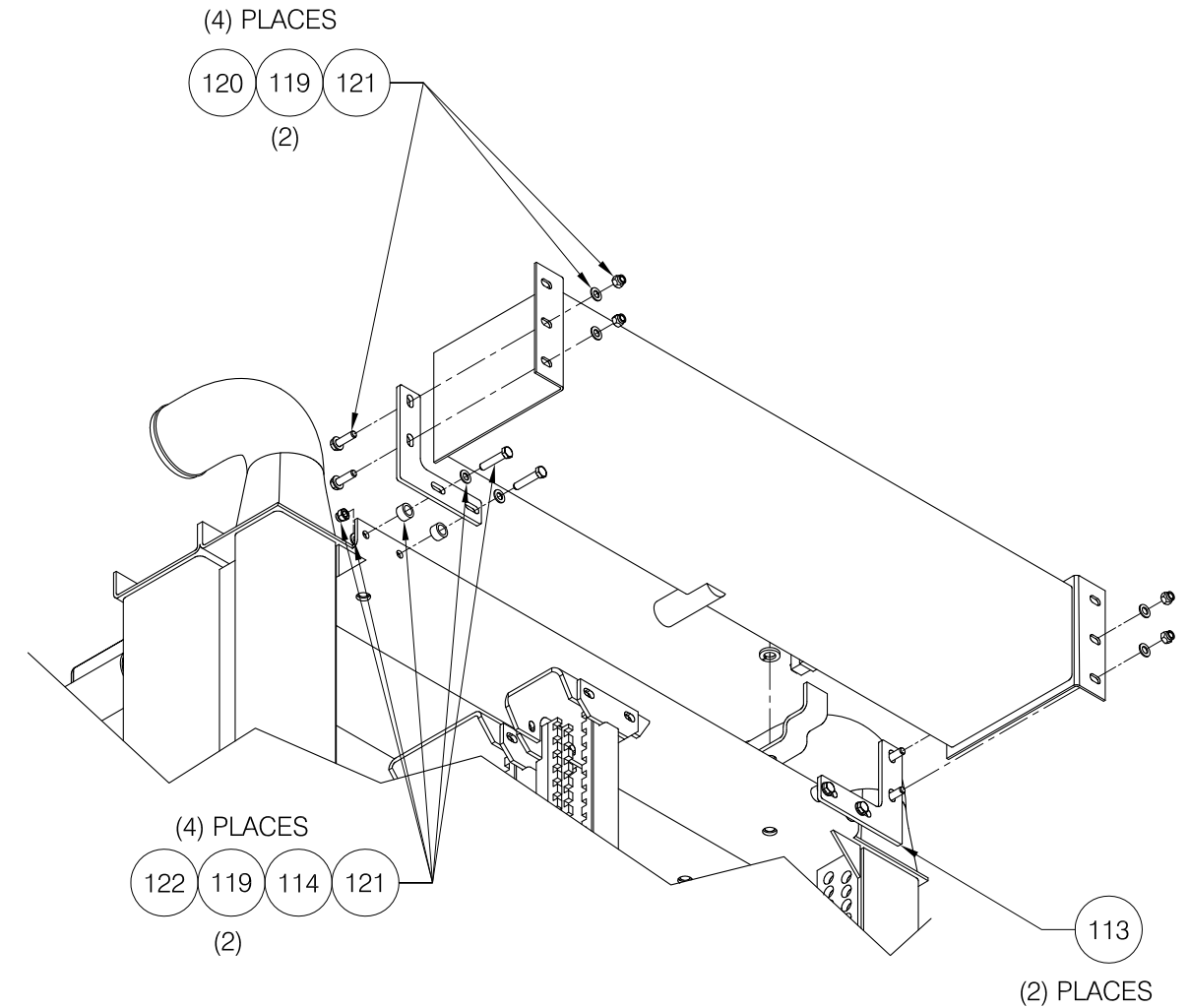
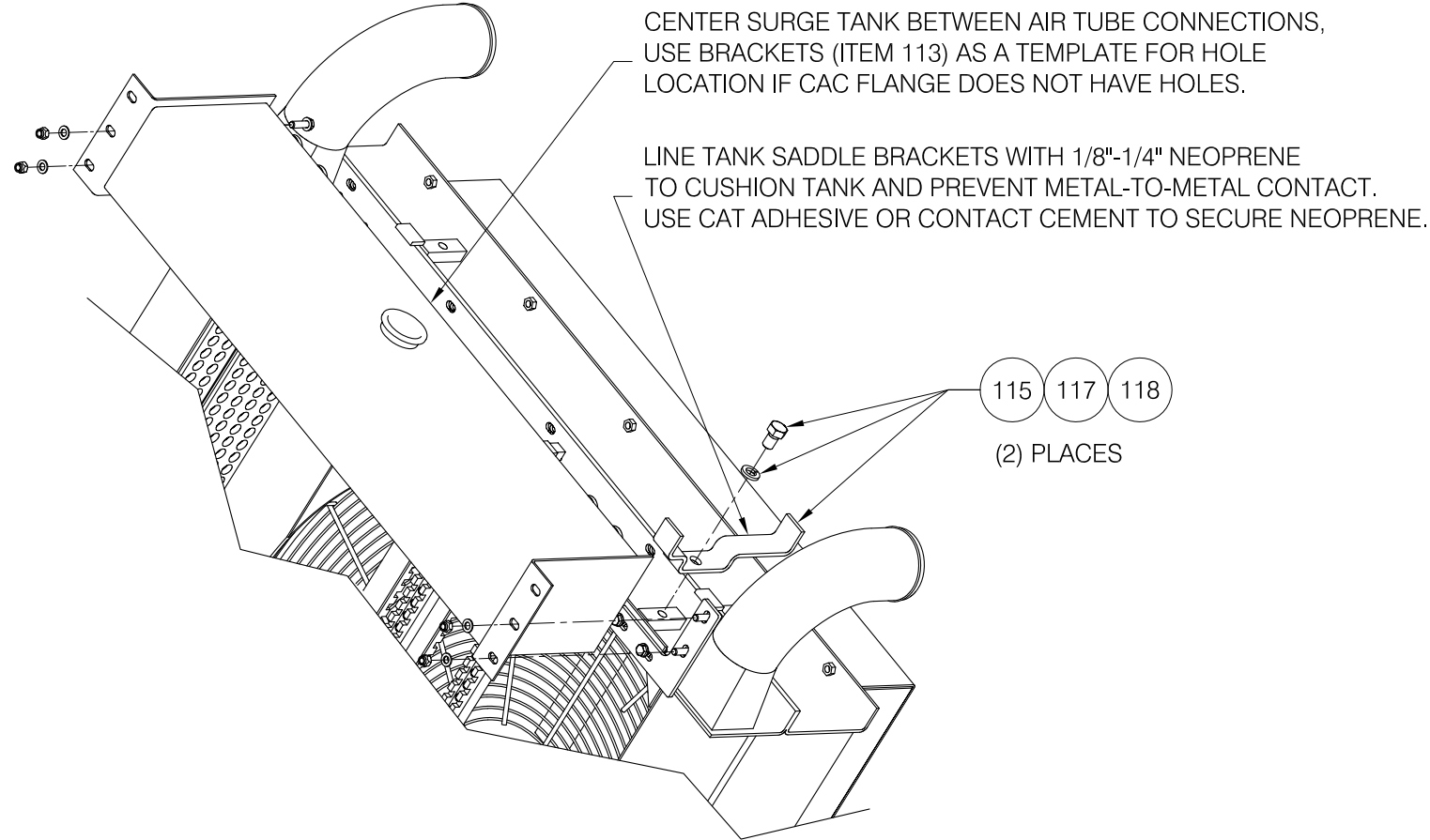

Power Unit

Power Unit

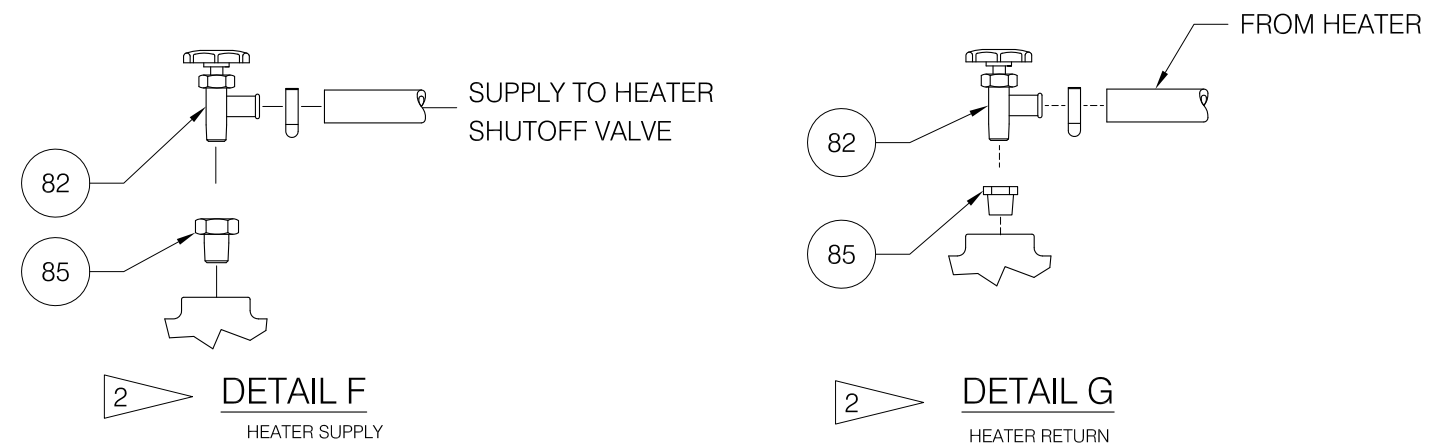
Item	Part No.	Qty	Description	Item	Part No.	Qty	Description
	584370		Power Unit				
1	* 251715	1	. Engine	65	209805	1	. Fitting
2	* 248962	1	. Converter	66	240874	1	. Fitting
3	* 245520	1	. Pump, Hydraulic	67	221140	1	. Fitting
4	* 254839	1	. Pump	68	209167	2	. Fitting
5	570775	1	. Ring Gear Assembly	69	217657	2	. Fitting
	237315	96	.. Washer, Bellville	70	209420	1	. Fitting
	237316	24	.. Nut	71	14857	2	. Fitting
	570735	1	.. Ring Gear	72	11767	2	. Kit, Split Flange
	570776	24	.. Stud		200604	4	.. Washer
6	* 254840	1	. Pump		209537	2	.. Clamp Half
7	225544	3	. V-Belt, Fan Drive		222379	4	.. Capscrew
8	234497	8	. Vibration Dampener	73	229639	1	. Fitting
9	505499	2	. Gasket	74	243589	2	. Fitting
10	539968	1	. Sleeve ,Pump	75	223909	4	. Lockwasher
11	529449	1	. Wire Assembly,Grnd	78	203528	1	. O-Ring
14	* 576920	1	. Oil Fill Installation	79	223794	1	. Fitting
15	* 581376	1	. Radiator	80	221186	1	. Fitting
16	580023	1	. Speed Sensor Assembly	81	R13811082	4	. Capscrew
17	250372	1	. Fan, 40	82	237008	2	. Shutoff Valve
18	243488	4	. Connector	85	209506	2	. Fitting
19	243489	8	. Clamp	90	R14589	1	. Bracket
20	582652	1	. Wire Harness, Ecm	91	223654	1	. Locknut
22	582654	1	. Engine Mt Weldment, LH	92	243553	1	. Fitting
23	576717	1	. Engine Mt Weldment	93	* 581670	1	. Dipstick & Housing Installation
24	576723	1	. Wire Harness	94	583189	1	. Spacer, Fan
25	581062	1	. Air Scoop Weldment	96	* 248990	1	. Pump
27	581566	1	. Tube, Cac	99	212492	1	. Cover
28	582124	1	. Tube, Cac	100	134328W	4	. Capscrew
29	576757	1	. Elbow, Reducer	101	201568	4	. Lockwasher
32	R13811804	12	. Capscrew	103	209579	1	. Clamp
33	00103341	12	. Flat Washer	104	209304	2	. Fitting
34	R13812514	3	. Lockwasher	105	209932	1	. Hose Assembly
36	580428	1	. Engine Configuration	106	26838	1	. Fitting
39	203541	2	. O-Ring	110	582653	1	. Engine Mt Weldment, RH
40	Y17C-1024	4	. Capscrew	111	249539	1	. Heater, Engine
42	576800	1	. Angle	113	581206	2	. Bracket
43	576801	1	. Angle	114	R2529808	4	. Spacer
47	224202	2	. Nut, Esna	115	581203	2	. Bracket Weldment, Tank
48	R13802628	2	. Flat Washer	116	252365	1	. Fitting
50	221666W	8	. Capscrew	117	R13032	2	. Capscrew
51	00106268	8	. Flat Washer	118	R13809066	2	. Lockwasher
52	578361	16	. Flat Washer	119	R13806980	16	. Flat Washer
53	223188	8	. Locknut	120	221499W	4	. Capscrew
55	223692	8	. Capscrew	121	237567	8	. Nut, Esna
56	223694	8	. Lockwasher	122	R13801813	4	. Capscrew
57	211791	7'	. Hose, Radiator	123	* 581086	1	. Condenser Installation
58	219460	1'	. Hose, Radiator	124	239826	1	. Compressor
59	225370	2	. T-Bolt Clamp	125	239979	1	. Bracket, Adapter
60	225369	4	. T-Bolt Clamp	126	253023	1	. V-Belt
61	200454W	14	. Capscrew				
62	222151	1	. Fitting				* See Separate Coverage
63	23390	3	. Kit, Split Flange				
	200604	4	.. Washer				
	201621	4	.. Capscrew				
	203523	1	.. O-Ring				
	209539	2	.. Clamp Half				
64	211693	1	. Fitting				

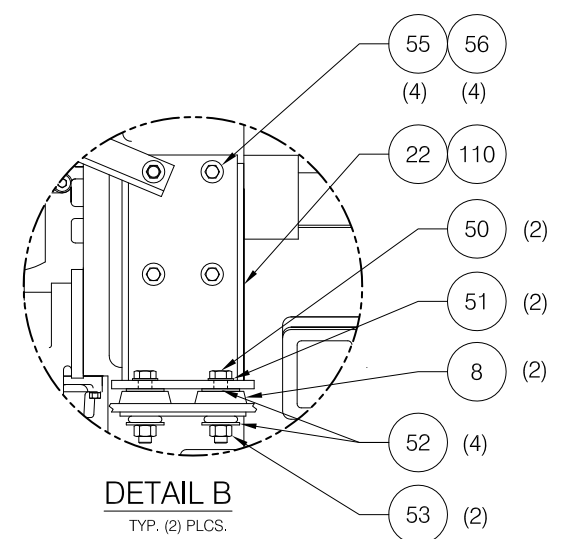
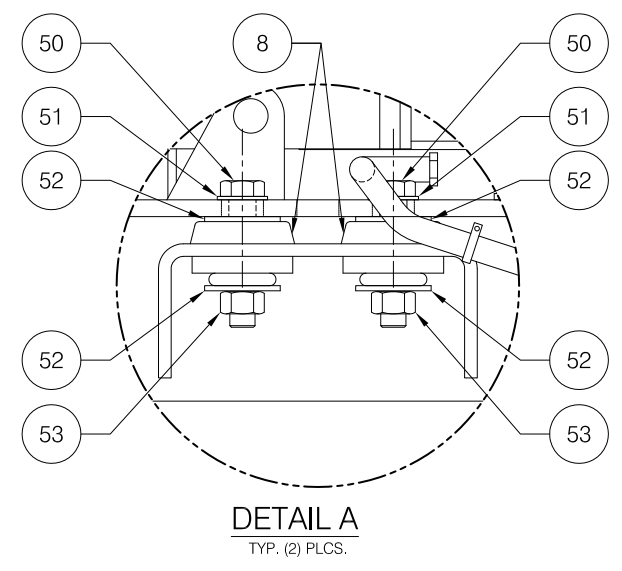
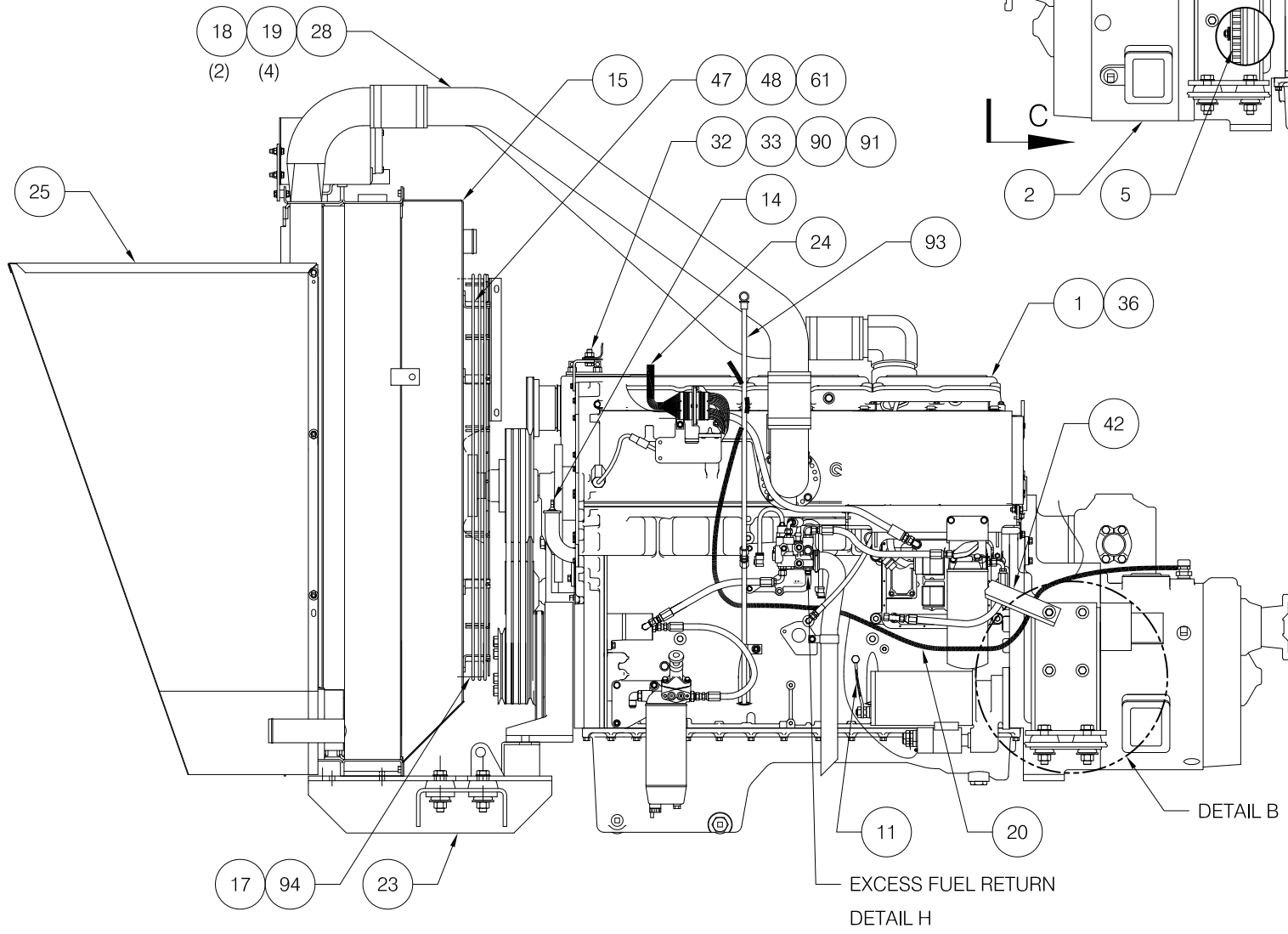
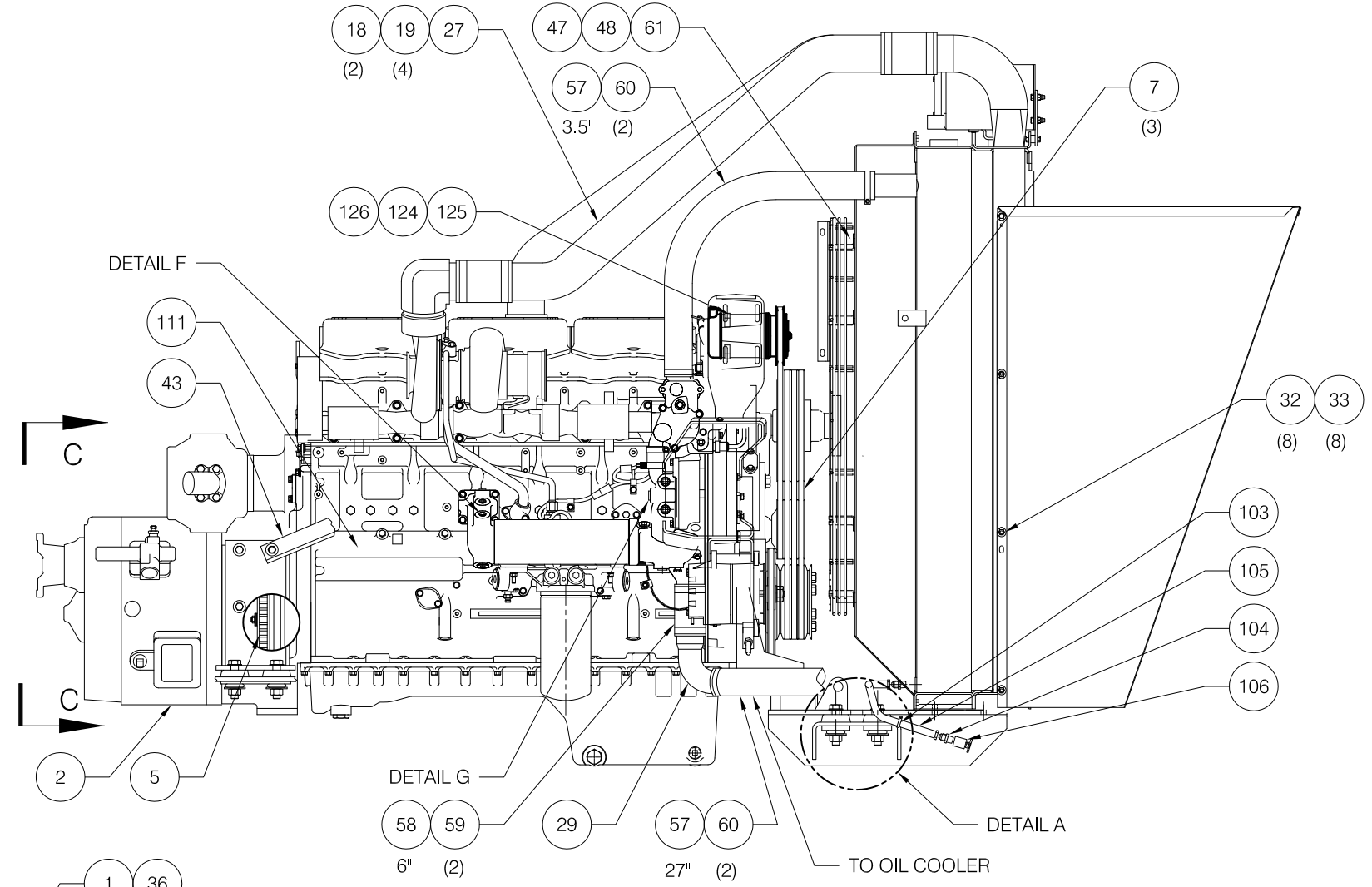
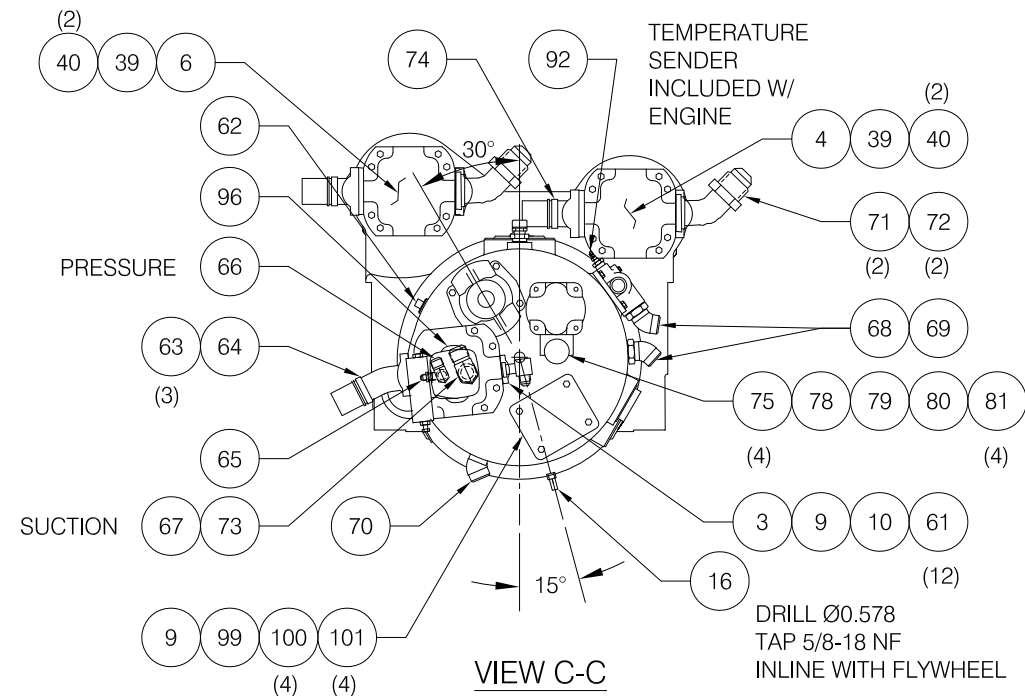


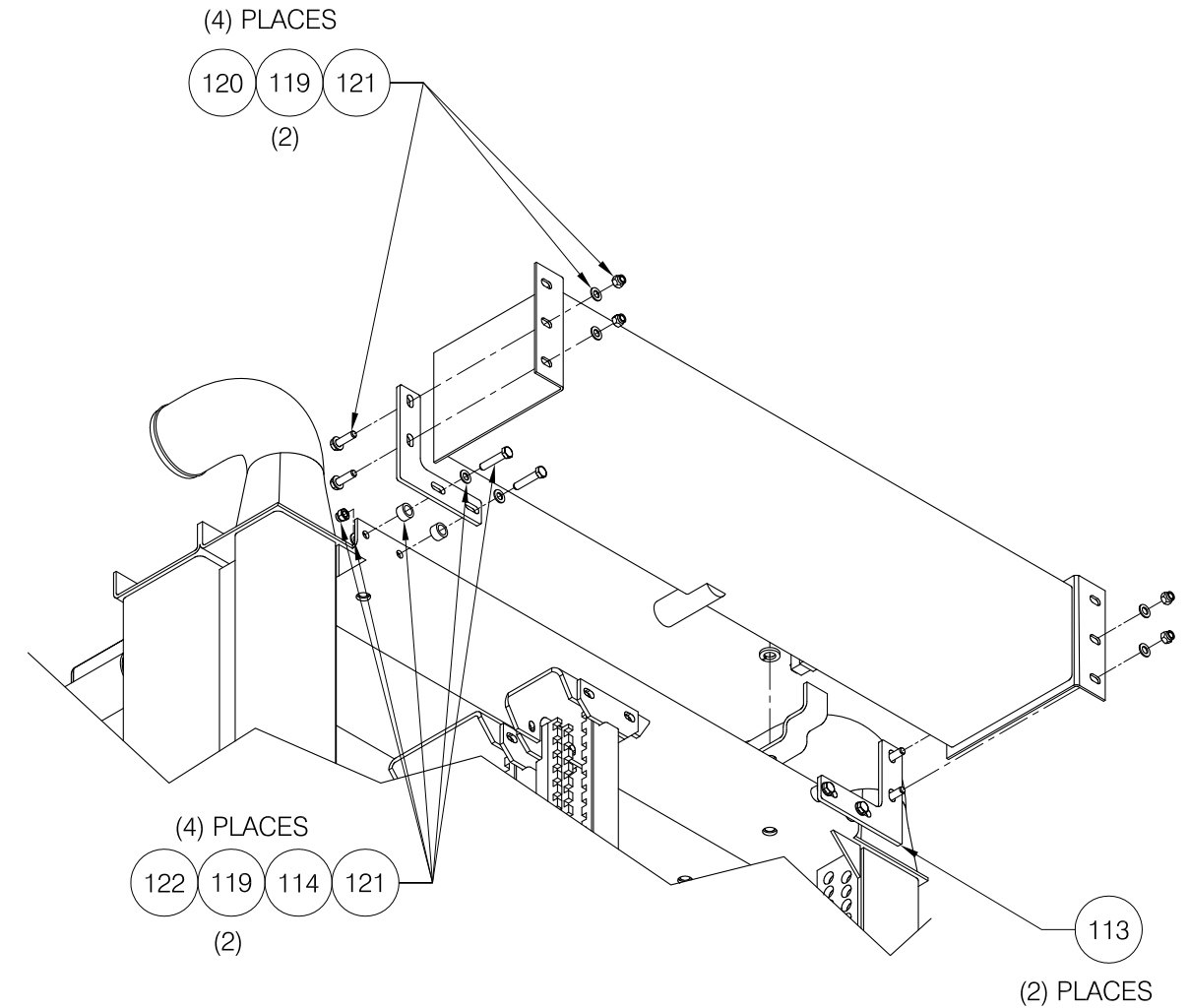
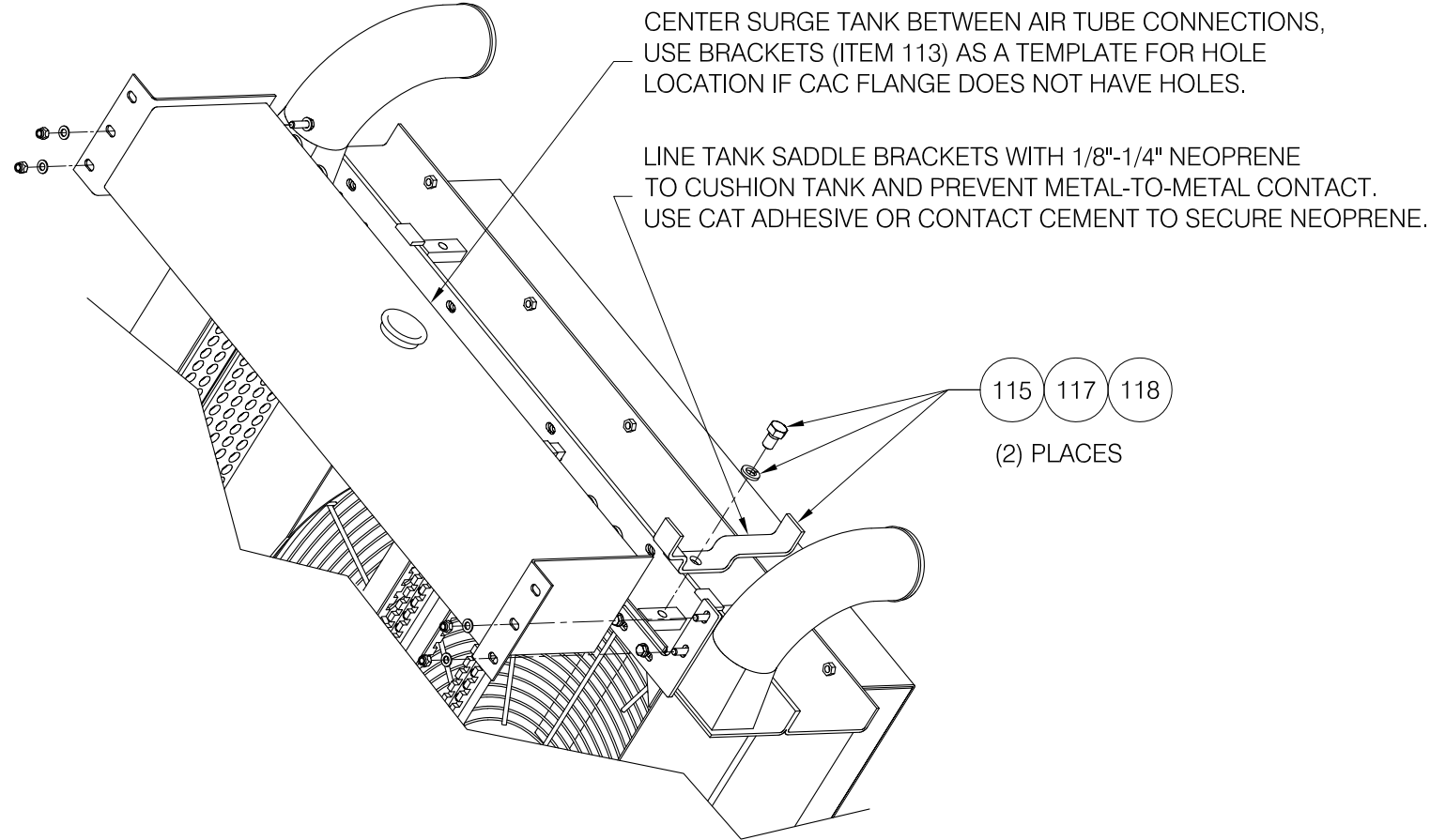


NOTES:

1. SEAL ALL OPEN PORTS WITH PLASTIC PLUGS, CAPS, OR TAPE.
2. REFER TO THE UNIT MASTER SHEET FOR THE CAB HEATER OR AIR CONDITIONER/ HEATER OPTION PARTS LIST FOR CONTINUATION OF PLUMBING.
3. CAUTION: NO LINES OTHER THAN THE VENT LINES ARE TO BE PLUMBED TO THE TOP TANK OR ENGINE VENT PORTS. THESE LINES ARE NOT TO RISE ABOVE THE RADIATOR VENT PORTS OR HAVE ANY LOOPS THAT COULD TRAP AIR.
4. FOR CLARITY, SUPPORTS, FITTINGS, AND/OR CONNECTIONS ARE NOT SHOWN IN ALL VIEWS.







NOTES:

1. SEAL ALL OPEN PORTS WITH PLASTIC PLUGS, CAPS, OR TAPE.
2. REFER TO THE UNIT MASTER SHEET FOR THE CAB HEATER OR AIR CONDITIONER/ HEATER OPTION PARTS LIST FOR CONTINUATION OF PLUMBING.
3. CAUTION: NO LINES OTHER THAN THE VENT LINES ARE TO BE PLUMBED TO THE TOP TANK OR ENGINE VENT PORTS. THESE LINES ARE NOT TO RISE ABOVE THE RADIATOR VENT PORTS OR HAVE ANY LOOPS THAT COULD TRAP AIR.
4. FOR CLARITY, SUPPORTS, FITTINGS, AND/OR CONNECTIONS ARE NOT SHOWN IN ALL VIEWS.

