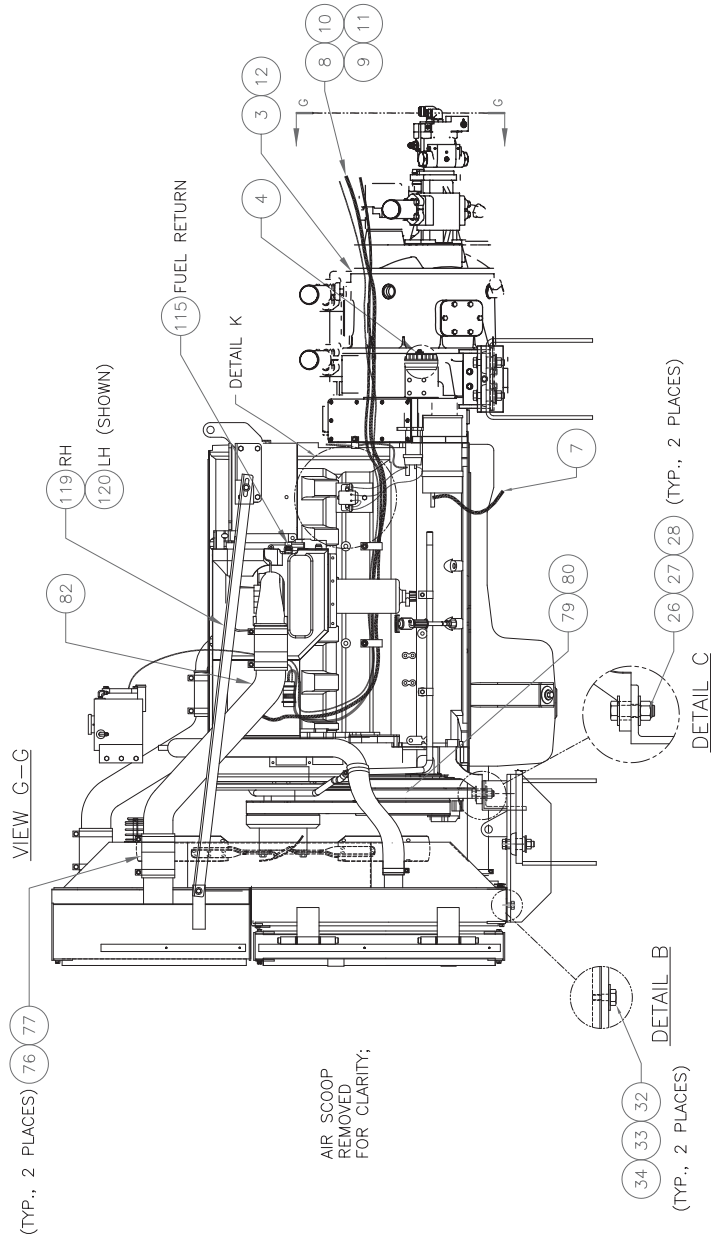
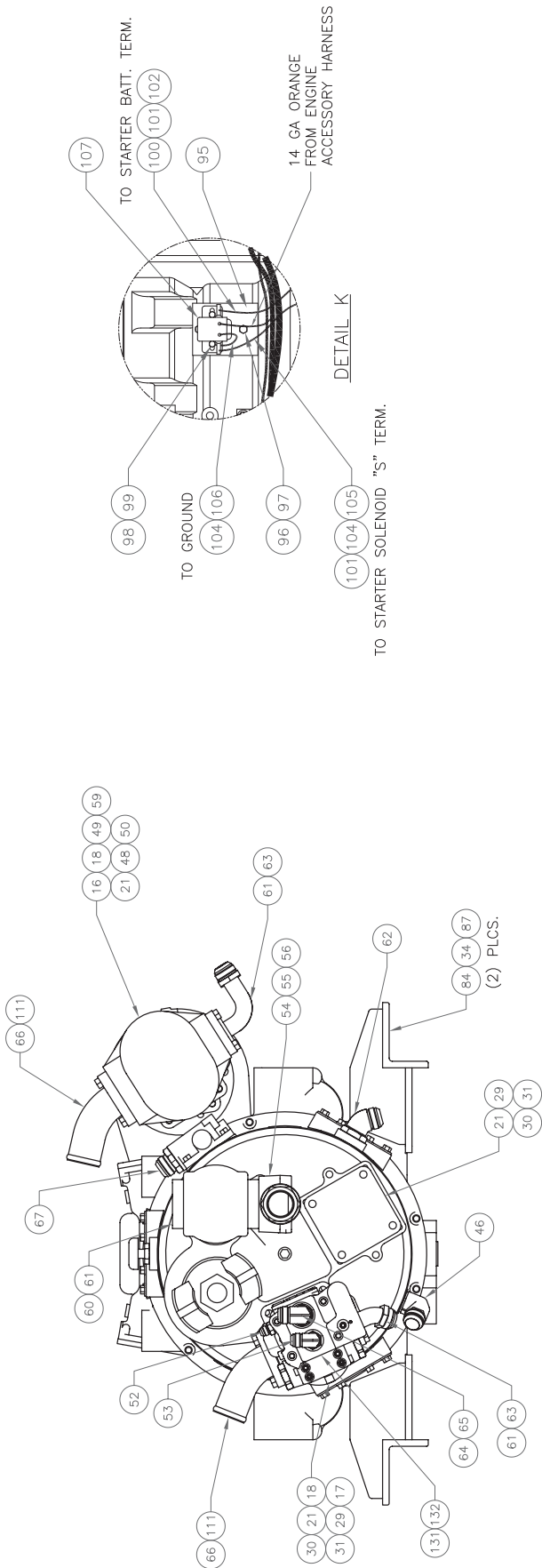


Power Unit

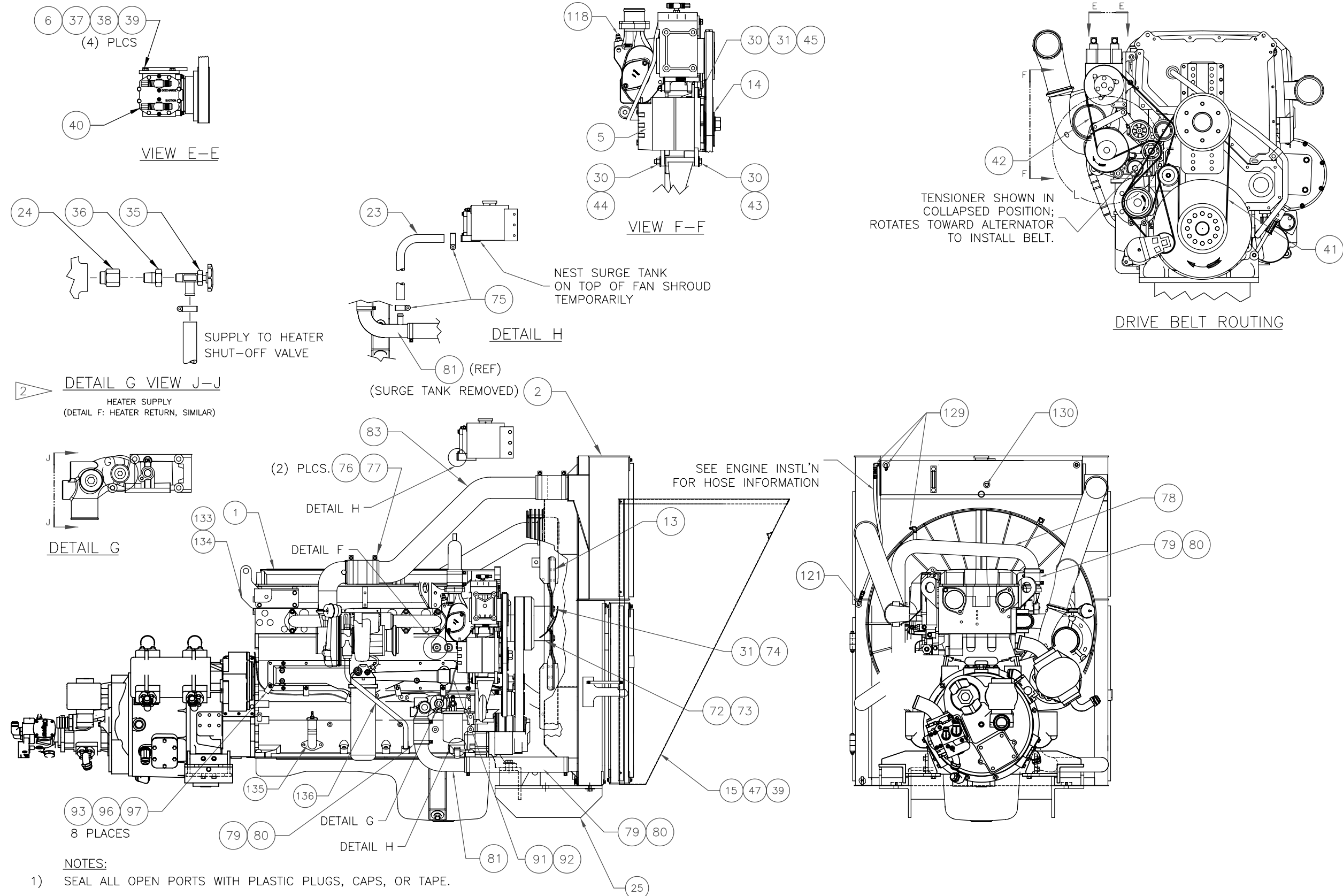


Power Unit

Item	Part No.	Qty	Description	Item	Part No.	Qty	Description
	581675		Power Unit				
1	*a 249705	1	. Engine	58	230596	3	. Capscrew
2	*a 246855	1	. Radiator/Oil Cooler/Aftercooler Assy	59	252141	2	. Stud
3	*a 239794	1	. Converter	60	14857	1	. Fitting, FF
4	570775	1	. Ring Gear Assembly	61	11767	4	. Kit, Split Flange
	237315	96	. . Washer, Bellville		209537	2	. . Clamp Half
	237316	24	. . Nut		222379	4	. . Capscrew
	570735	1	. . Ring Gear	62	217657	1	. Fitting, FF
	570776	24	. . Stud	63	14274	1	. Fitting
5	*a 234183	1	. Alternator	64	210011	1	. Fitting
6	239979	1	. Bracket, Adapter	65	210084	2	. Fitting
7	529449	1	. Wire Assembly, Grnd	66	211693	3	. Fitting, FF
8	581113	1	. Wire Harness	67	209619	1	. Fitting
9	581137	1	. Wire Harness	75	202947	2	. Hose Clamp
10	578953	1	. Wire Harness	76	243488	4	. Connector
11	578954	1	. Wire Harness	77	243489	8	. Clamp
13	246987	1	. Fan, 40	78	580509	1	. Tube
14	247024	1	. Pulley, Alternator	79	211791	5'	. Hose, Radiator
15	580587	1	. Air Scoop	80	232881	8	. T-Bolt Clamp
16	*a*b 245519	1	. Hydraulic Pump, Tandem	81	579333	1	. Tube, Lower Rad
17	*a*b 245520	1	. Hydraulic Pump	82	580389	1	. Tube
18	539968	2	. Sleeve, Pump	83	580390	1	. Tube
21	505499	3	. Gasket	84	580504	2	. Engine Mt, Rear
23	206320	6'	. Hose, Bulk	87	R13811123	6	. Capscrew
24	247072	2	. Fitting	91	219383	8'	. Wire
25	580421	1	. Engine Mt	92	219392	7'	. Loom, Auto
26	R13811148	2	. Capscrew	93	209578	8	. Clamp
27	R13811457	4	. Flat Washer	96	236805	10	. Capscrew
28	224194	2	. Nut, Esna	97	R13801005	10	. Lockwasher
29	R13811075	12	. Capscrew	98	224120W	2	. Capscrew
30	R13811451	8	. Flat Washer	99	223871	2	. Lockwasher
31	R13812516	20	. Lockwasher	100	219404	2'	. Wire
32	R13811122	6	. Capscrew	101	228776	3	. Terminal Ring
33	R13042	10	. Flat Washer	102	203341	1	. Terminal Ring
34	R13809066	16	. Lockwasher	104	200247	3	. Terminal Ring
35	203274	2	. Shutoff Valve	105	219435	2'	. Wire
36	12930006	2	. Fitting	106	219408	1'	. Wire
37	Y17C-0624	4	. Capscrew	107	229301	1	. Relay
38	R13806980	4	. Flat Washer	111	23390	2	. Kit, Split Flange
39	R13802575	4	. Lockwasher		201621	4	. . Capscrew
40	249309	1	. Compressor		203523	1	. . O-Ring
43	R13801909	1	. Capscrew		209539	2	. . Clamp Half
44	223587	1	. Nut, Esna	115	220095	1	. Fitting
45	R13090	1	. Capscrew	118	248624	1	. Fitting
46	209420	1	. Fitting	119	580395	1	. Angle, LH
47	162572W	8	. Capscrew	120	580396	1	. Angle, RH
48	234588	2	. Capscrew	121	209752	1	. Fitting
49	233477	4	. Lockwasher	129	209406	4	. Fitting
50	R13812665	4	. Hard Washer	131*a*b	248990	1	. Pump, Brake/Pilot
51	00120396	14	. Flat Washer	132	226184	1	. Gasket
52	209805	1	. Fitting	133	579242	2	. Bracket
53	209490	1	. Fitting	134	579325	2	. Lifting Eye
54	223794	1	. Fitting	135 *a	580644	1	. Engine Oil Fill
55	221186	1	. Fitting	136 *a	580646	1	. Dipstick & Housing Assembly
56	203528	1	. O-Ring				
57	Y17C-0824	6	. Capscrew				

*a See Separate Coverage

*b Refer to Pump Arrangement 583591PA



NOTES:

- 1) SEAL ALL OPEN PORTS WITH PLASTIC PLUGS, CAPS, OR TAPE.
- 2) REFER TO THE UNIT MASTER SHEET FOR THE CAB HEATER/AIR CONDITIONER PARTS LIST FOR CONTINUATION OF PLUMBING.
- 3) CAUTION: NO LINES OTHER THAN THE VENT LINES ARE TO BE PLUMBED TO THE TOP TANK OR ENGINE VENT PORTS. THESE LINES ARE NOT TO RISE ABOVE THE RADIATOR VENT PORTS OR HAVE ANY LOOPS THAT COULD TRAP AIR.
- 4) INSTALL PUMP (ITEM 15) WITH CASE DRAIN ORIENTED UP
- 5) FOR CLARITY, SUPPORTS, FITTINGS AND CONNECTIONS ARE NOT SHOWN IN ALL VIEWS;