

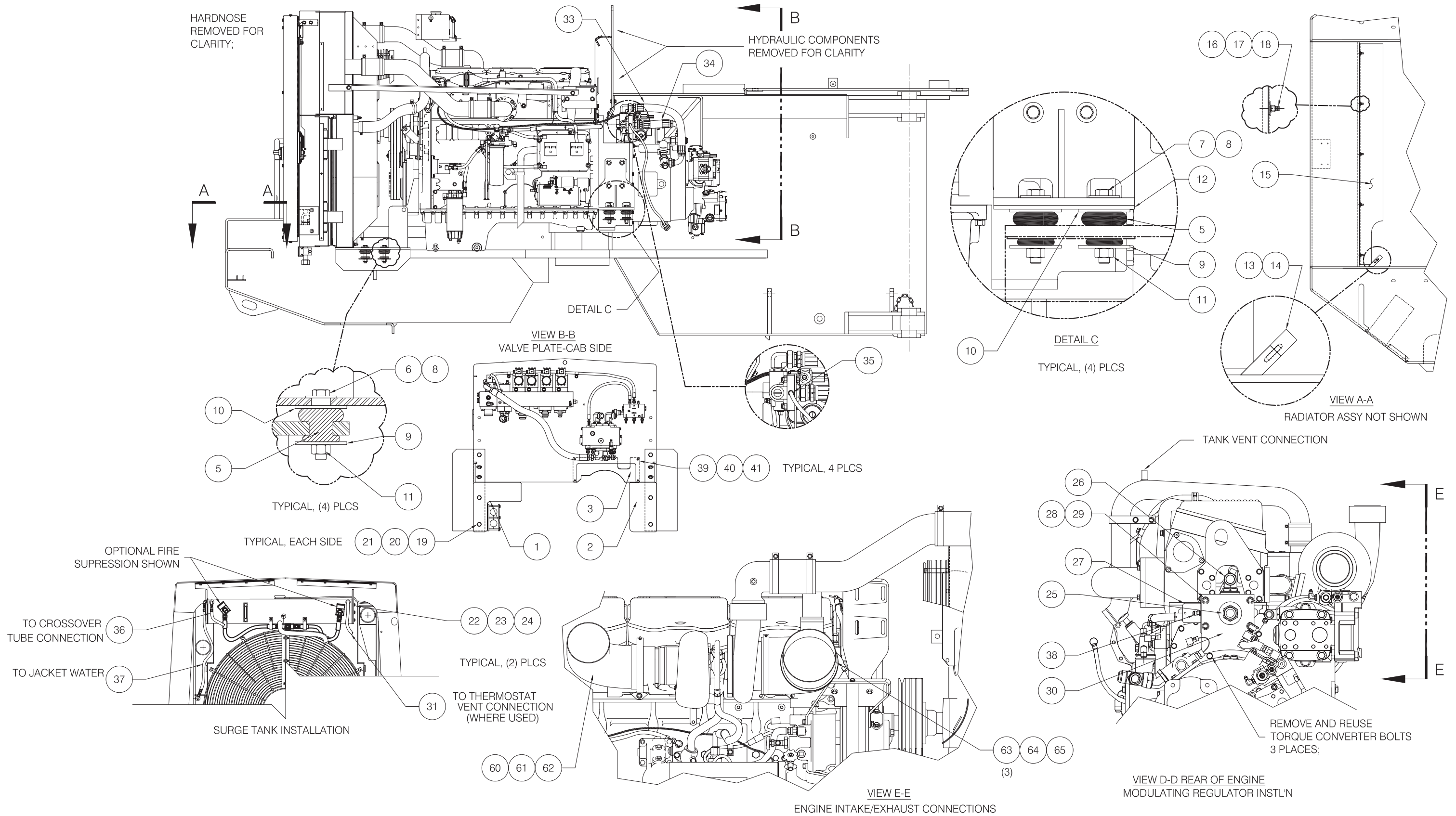
---

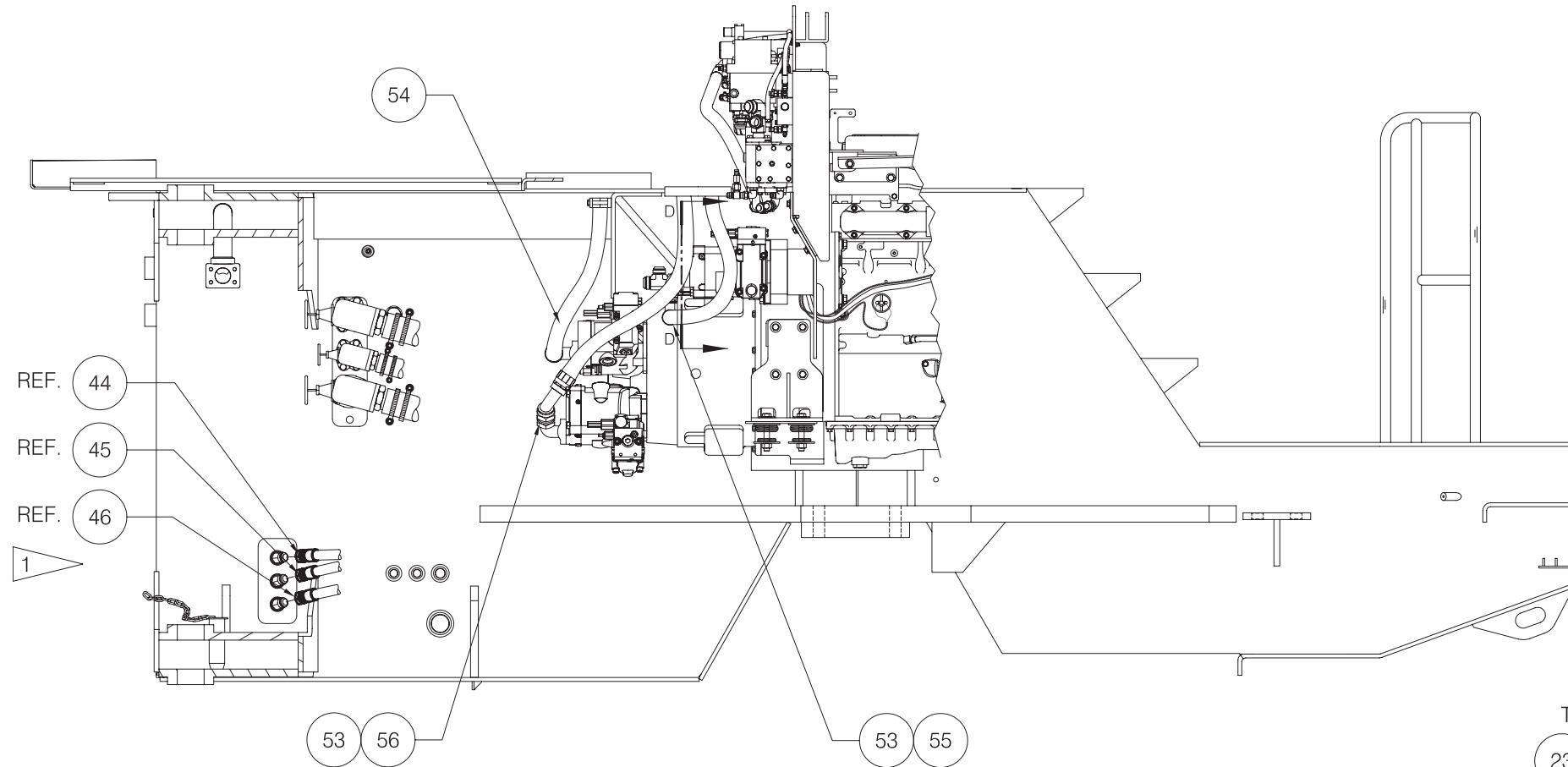
Engine Installation

## Engine Installation

Item	Part No.	Qty	Description	Item	Part No.	Qty	Description
	<b>582013</b>		<b>Engine Installation</b>				
1	579893	1	. Skirt Weldment	35	R12171	1	. Hose Assembly
2	579895	1	. Plate, LH Skirt	36	249450	1	. Hose Assembly
3	580210	1	. Plate, Cover	37	249586	1	. Hose Assembly
5	225530	8	. Vibration Dampener	38	209754	1	. Fitting
6	228686	4	. Capscrew	39	R13811014	4	. Capscrew
7	231696	6	. Capscrew	40	R13802621	4	. Flat Washer
8	00106268	8	. Flat Washer	41	R13812513	4	. Lockwasher
9	557376	8	. Flat Washer	42	216042	8	. T-Bolt Clamp
10	551132	8	. Washer, Snub	43	201439	4'	. Suction Hose
11	223188	8	. Locknut	44	201440	10'	. Suction Hose
12	580375	2	. Plate, Block	45	211674	4	. T-Bolt Clamp
13	579527	1	. Pad	46	209707	2	. Clamp
14	R1318360	1	. Stud, Weld	47	24166	1	. Hose Assembly
15	579528	1	. Plate, Guard	48	251617	1	. Hose Assembly
16	R13806980	5	. Flat Washer	49	251774	1	. Hose Assembly
17	R13811175	5	. Hex Nut	50	247133	1	. Hose Assembly
18	R13812514	5	. Lockwasher	51	237813	1	. Hose Assembly
19	R13811075	4	. Capscrew	52	237816	1	. Hose Assembly
20	R13811451	4	. Flat Washer	53	239938	2	. Fitting
21	223587	8	. Nut, Esna	54	239776	1	. Hose Assembly
22	222600	6	. Capscrew	55	251584	1	. Hose Assembly
23	230282	24	. Flat Washer	56	251722	1	. Hose Assembly
24	223654	6	. Locknut	57	209700	6	. Clamp
25	209619	1	. Fitting	58	237567	6	. Nut, Esna
26	209714	1	. Fitting	59	221314	6	. Stud, Weld
27	* 228640	1	. Converter, Bypass Reg	60	556952	1	. Tube, Flex
28	00186689	4	. Capscrew	61	574233	1	. Elbow Weldment
29	224202	4	. Nut, Esna	62	226586	2	. Seal Clamp
30	580154	1	. Mounting Plate	63	210631	3	. T-Bolt Clamp
31	248756	1	. Hose Assembly	64	556941	1	. Tube
33	248741	1	. Hose Assembly	65	570172	1	. Elbow, Rubber
34	248742	1	. Hose Assembly				

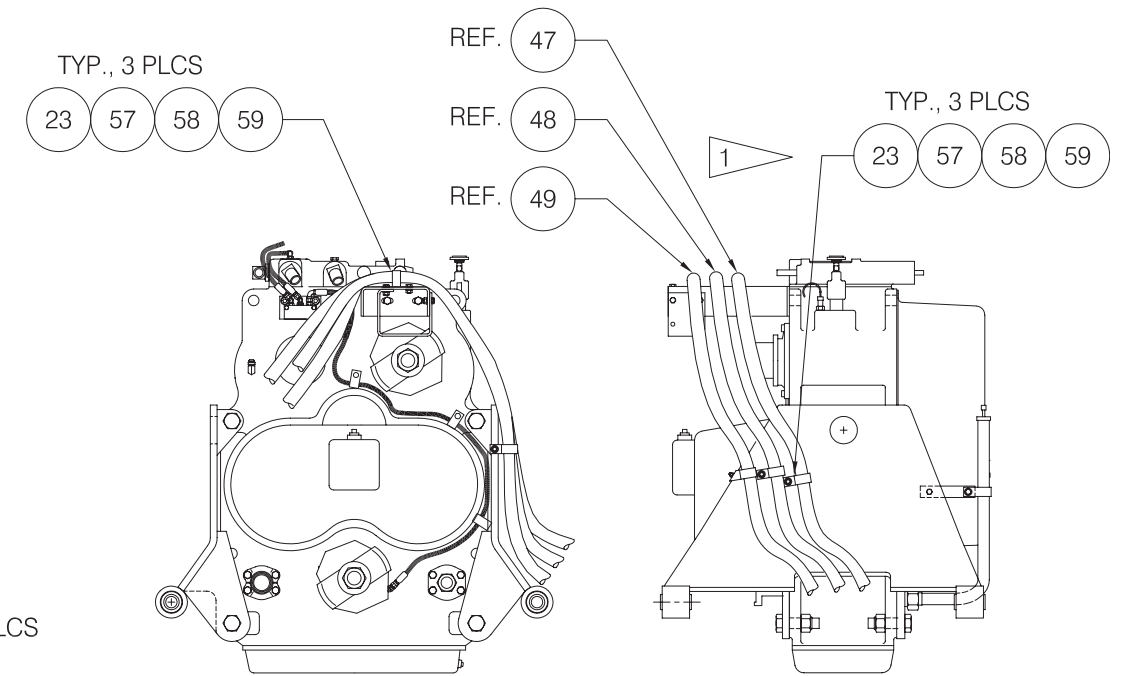
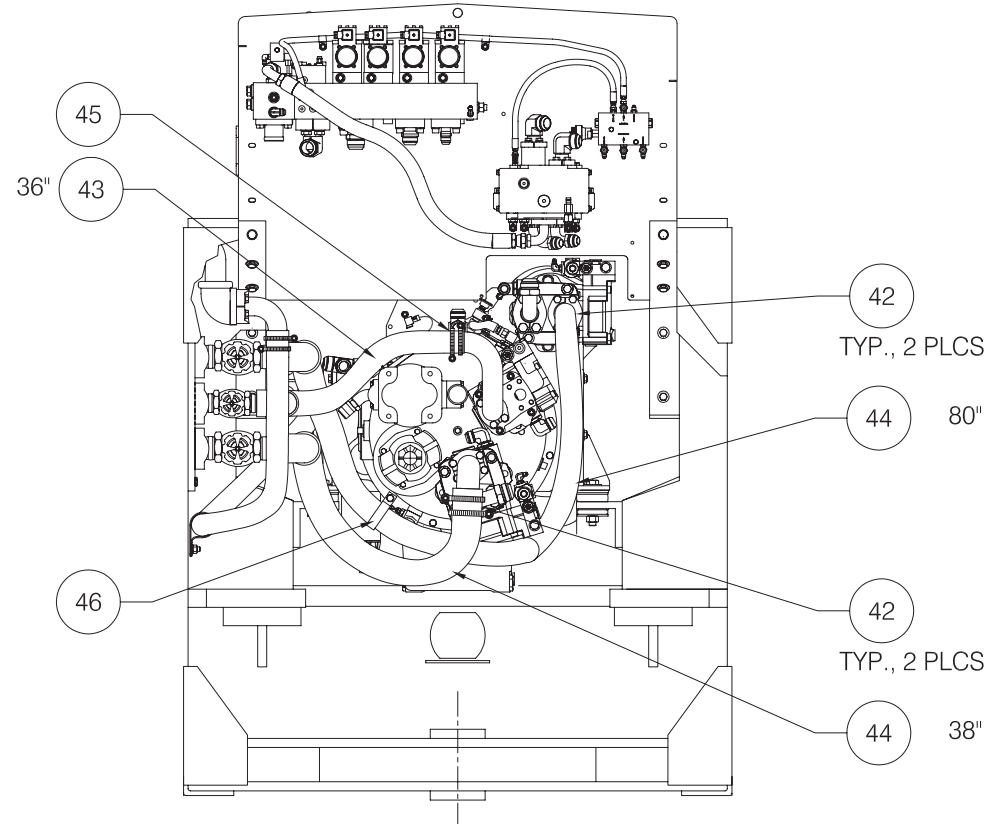
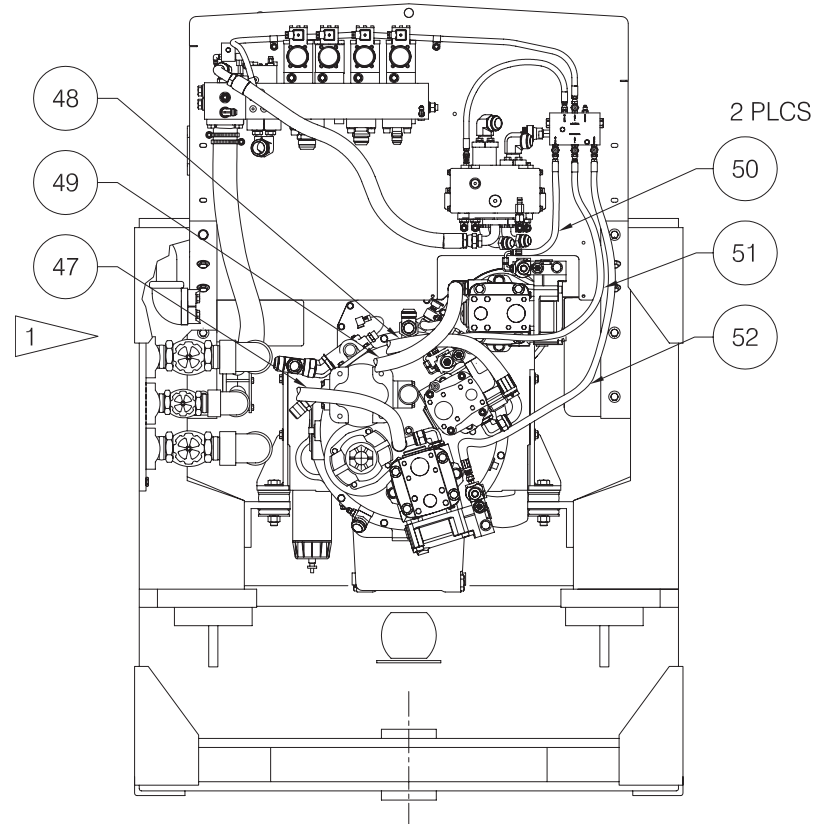
\*a See Separate Coverage





VIEW B-B CHASSIS INTERIOR  
L-S AND CASE DRAIN LINE DETAIL

VIEW B-B CHASSIS INTERIOR  
SUCTION LINE DETAIL



VIEW ON REAR AND RH SIDE OF TRANSMISSION  
CASE DRAIN LINE DETAIL

1 CASE DRAIN LINES CONNECT TO PUMPS AND RUN BACK TOWARDS TRANSMISSION, WRAPPING OVER TOP OF DRIVELINE GUARD, DOWN RH TRANSMISSION MOUNT TO TANK CONNECTIONS. CLAMP WHERE REQUIRED TO ALLEVIATE CHAFFING AND INTERFERENCE;