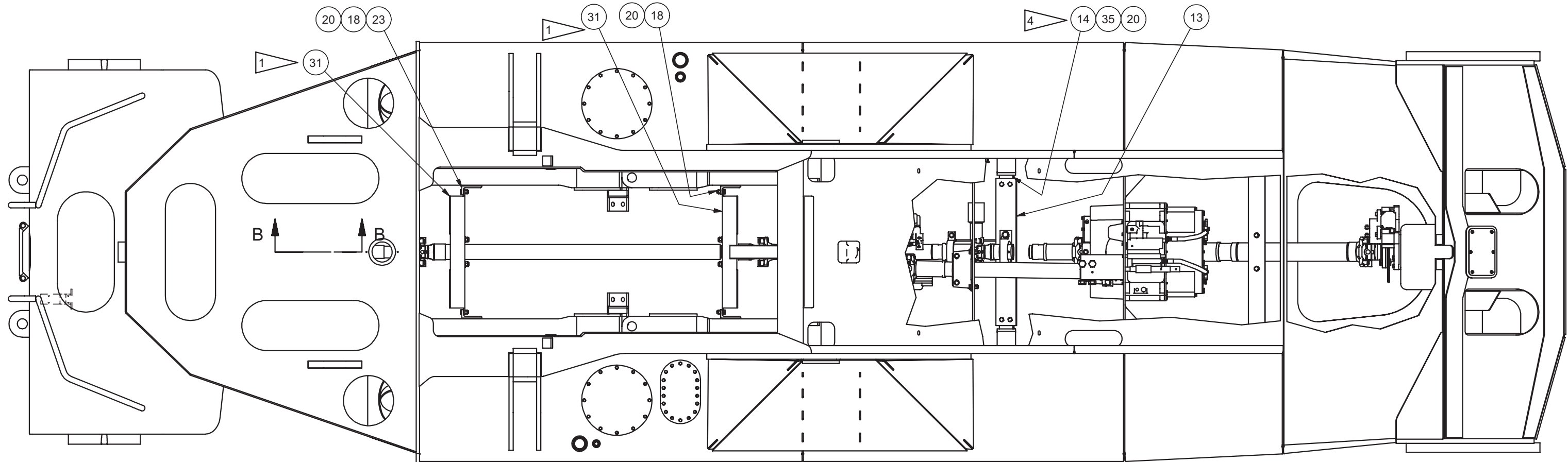


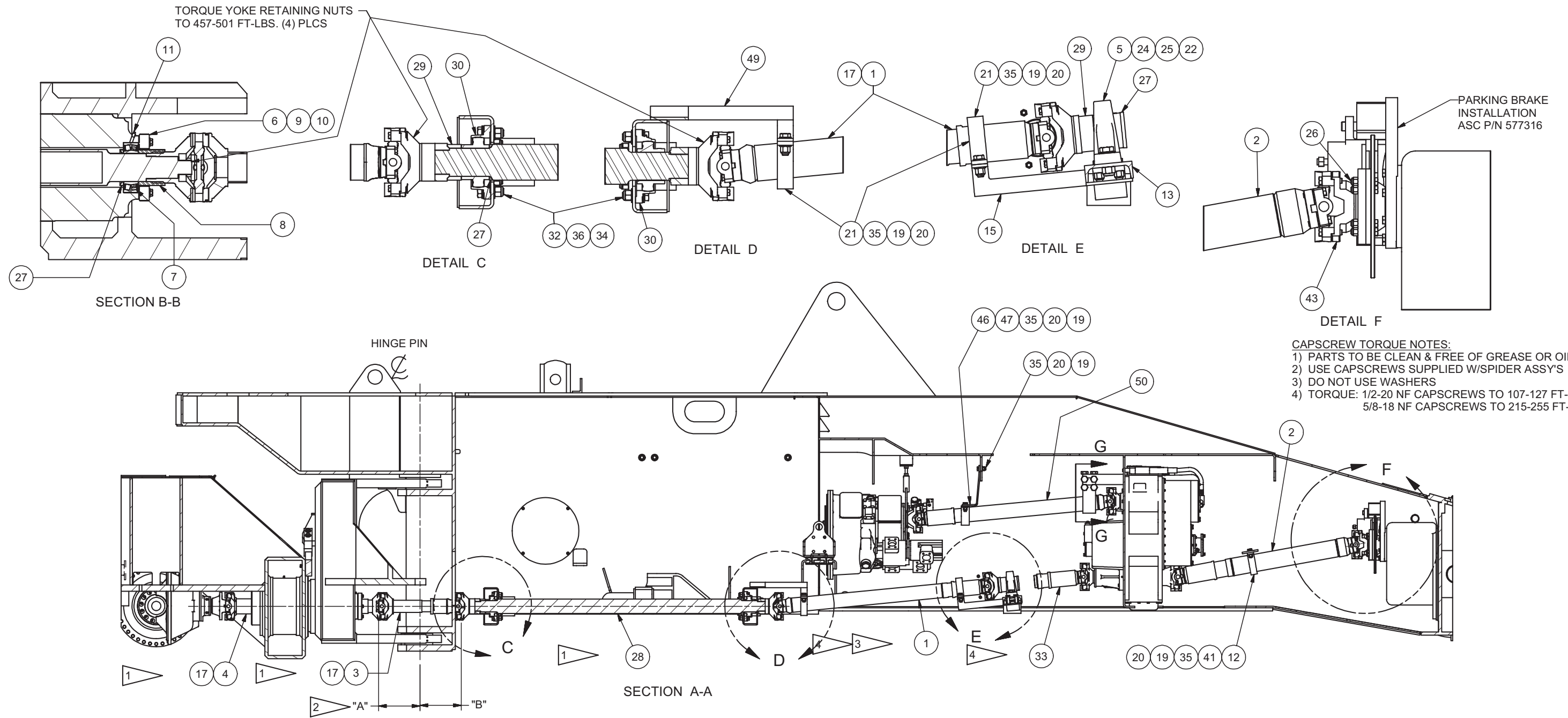
---

Driveline Installation

## Driveline Installation

Item	Part No.	Qty	Description	Item	Part No.	Qty	Description
	<b>581049</b>		<b>Driveline Installation</b>				
1	* 249854	1	. Driveline Assembly	27	580335	3	. Spacer
2	* 251314	1	. Driveline Assembly	28	* 249303	1	. Driveline Assembly
3	* 248963	1	. Driveline Assembly	29	580336	2	. Spacer
4	* 249667	1	. Driveline Assembly	30	249405	2	. Bearing, Flg Mt
5	251568	1	. Bearing, Pillow Block	31	580162	2	. Bracket Weldment
6	579939	1	. Retainer,Brg	32	223179	8	. Capscrew
7	248970	1	. Bearing, Spherical	33	* 249302	1	. Driveline Assembly
8	580334	1	. Spacer	34	234549	8	. Nut, Esna
9	223086	6	. Capscrew	35	00223451	14	. Capscrew
10	201569	8	. Flat Washer	36	00103347	16	. Flat Washer
11	00191758	1	. Fitting, Lube, 16	41	581830	1	. Bar
12	581831	1	. Bar,Shield	43	581542	1	. Adapter Weldment
13	581836	1	. Channel	46	577496	1	. Bracket
14	581837	2	. Angle	47	577674	1	. Bar,Guard
15	581839	1	. Bracket	49	576257	2	. Bracket Weldment
17	210961	32	. Capscrew	50	249017	1	. Driveline Assembly
18	223945	12	. Capscrew	51	557039	1	. Bracket
19	00106268	20	. Flat Washer	52	556580	1	. Plateguard
20	223188	26	. Locknut	53	581908	1	. Bar,Guard
21	563885	2	. Shield	54	00217219	2	. Capscrew
22	R13803587	2	. Locknut	55	R13811191	8	. Locknut
23	563442	4	. Angle	56	222600	8	. Capscrew
24	00223487	2	. Capscrew	57	R13806980	16	. Flat Washer
25	R13813326	2	. Hard Washer				
26	223915	8	. Capscrew				* See Separate Coverage





**CAPSCREW TORQUE NOTES:**  
 1) PARTS TO BE CLEAN & FREE OF GREASE OR OIL  
 2) USE CAPSCREWS SUPPLIED W/SPIDER ASSY'S  
 3) DO NOT USE WASHERS  
 4) TORQUE: 1/2-20 NF CAPSCREWS TO 107-127 FT-LBS  
 5/8-18 NF CAPSCREWS TO 215-255 FT-LBS

1 DRIVELINE BEARING BRACKETS MUST BE LOCATED SO THAT DRIVELINES, ITEM'S 3,4 & 28, ARE INLINE ON A COMMON CENTERLINE WHEN THE BOGIE IS INLINE WITH THE CHASSIS.

2 WITH THE BOGIE INLINE WITH CHASSIS, DISTANCE "A" MUST EQUAL DISTANCE "B" WITHIN +/- 1/16".

3 SET ITEMS 3, 4, & 28 BEFORE INSTALLING ITEM 1

4 LOCATE BEARING SUPPORT, ITEMS 5, 13, & 14, SO THAT DRIVELINES 1 & 33 ARE ON A COMMON CENTERLINE.

