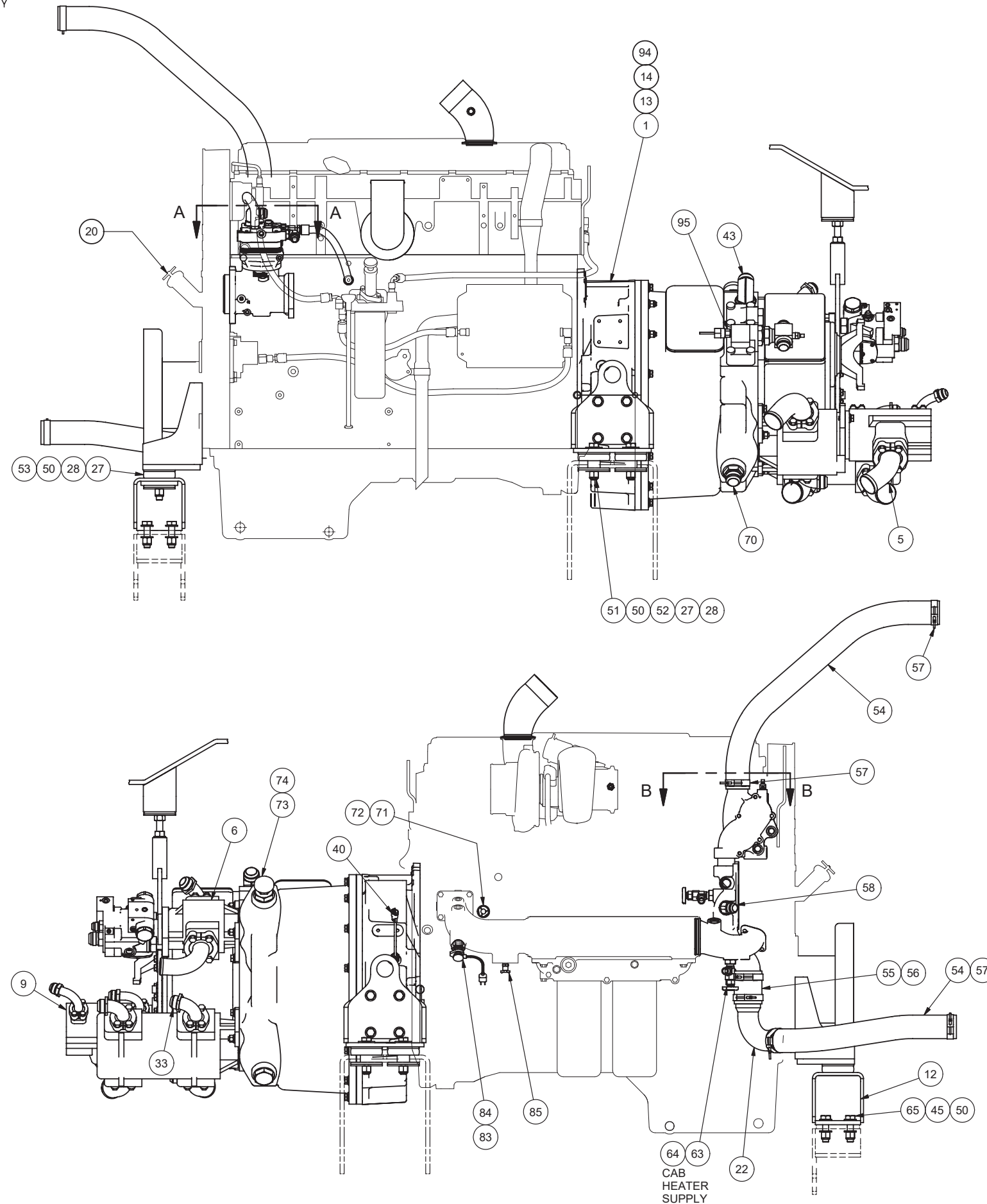

Power Unit

Power Unit

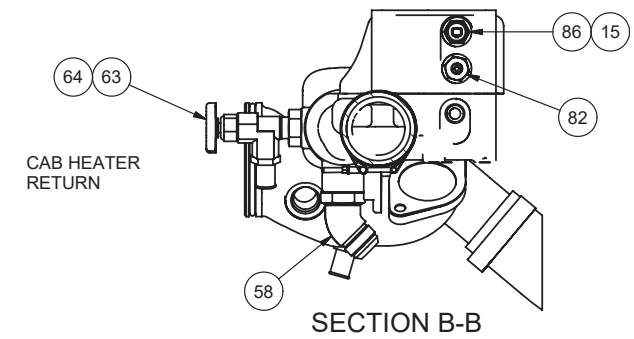
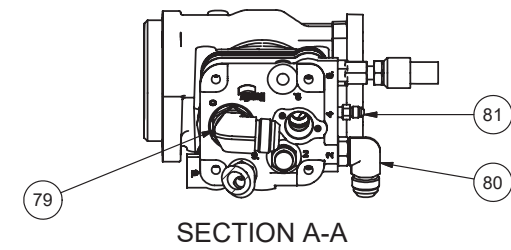
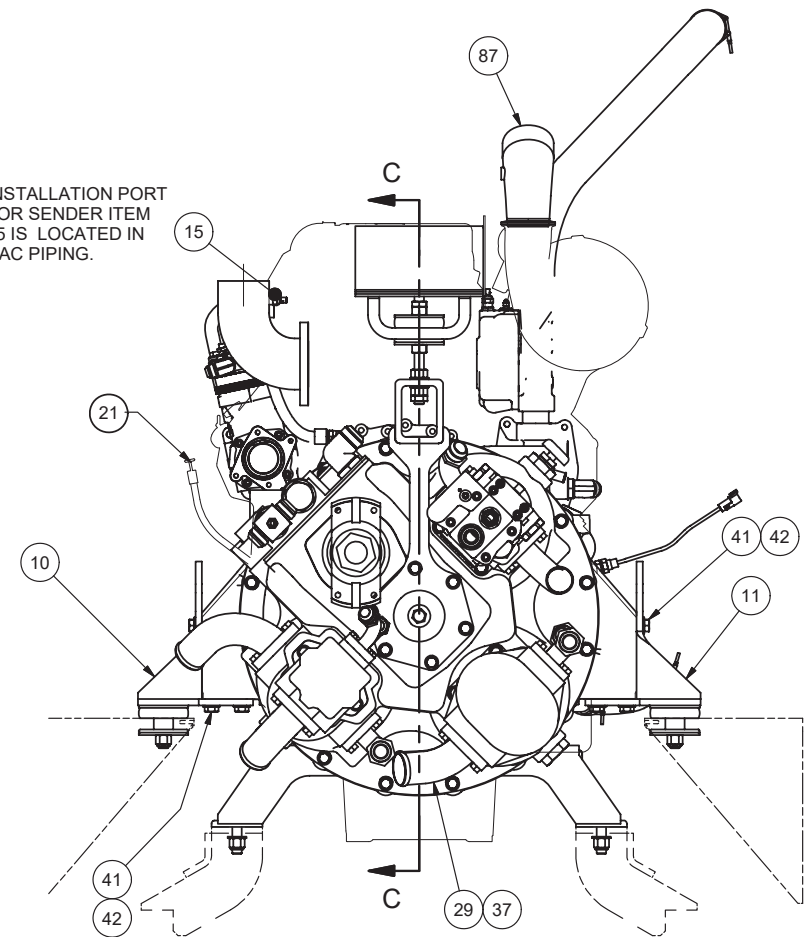
Item	Part No.	Qty	Description	Item	Part No.	Qty	Description
	581047		Power Unit				
1	*a 250422	1	. Engine	46	205126	4	. Hex Nut
2	*a*b 583123	1	. Converter	47	238381	2	. Jam Nut
3	*b 576613	1	. Gear, Ring	48	00186689	6	. Capscrew
5	*a 247010	1	. Pump, Tandem	49	200604	30	. Lockwasher
6	*a 245520	1	. Pump, Hydraulic	50	R13811196	10	. Locknut
7	*a 248990	1	. Pump	51	234896	4	. Capscrew
8	*a 251596	1	. Pump, Hydraulic	52	00106268	4	. Flat Washer
9	*a 250864	1	. Pump, Vane	53	228591	2	. Capscrew
10	581519	1	. Engine Mount, RH	54	211791	7'	. Hose, Radiator
11	581520	1	. Engine Mount, LH	55	219460	1'	. Hose, Radiator
12	581649	1	. Engine Mount	56	225370	2	. T-Bolt Clamp
13	582652	1	. Wire Harness	57	225369	4	. T-Bolt Clamp
14	581659	1	. Wire Harness	58	209147	1	. Fitting
15	251570	3	. Sensor, Coolant/Air/Oil Temp	59	219672	1	. Plate, Back
18	581867	1	. Spacer	60	219670	12	. Stud
19	581868	1	. Bushing	61	219673	60	. Washer
20	*a 576920	1	. Oil Fill Installation	62	219674	12	. Nut
21	*a 576917	1	. Dipstick & Housing Installation	63	237008	2	. Shutoff Valve
22	576757	1	. Elbow, Reducer	64	214478	2	. Fitting
23	251532	6	. Stud	65	234060	4	. Capscrew
24	581858	1	. Bracket, Hanger	66	214128	1	. Fitting
25	581861	1	. Rod	67	505499	3	. Gasket
26	581862	1	. Bar	68	230530	6	. Hex Nut
27	234497	7	. Vibration Dampener	69	201635	8	. Capscrew
28	578361	14	. Flat Washer	70	211817	1	. Fitting
29	211693	3	. Fitting	71	202889	1	. Switch, Oil Press
30	201458	1	. Fitting	72	224967	1	. Fitting
31	225128	2	. Fitting	73	240822	1	. Kit, Breather
32	231622	1	. Fitting	74	16890	1	. Fitting
33	14274	4	. Fitting	75	230596	12	. Capscrew
34	210011	1	. Fitting	76	231722	2	. Capscrew
35	209215	1	. Fitting	77	581748	2	. Stud
36	209805	1	. Fitting	78	R13811193	2	. Locknut
37	23390	5	. Kit, Split Flange	79	209715	1	. Fitting
	200604	4	.. Lockwasher	80	213917	1	. Fitting
	201621	4	.. Capscrew	81	209750	1	. Fitting
	203523	1	.. O-Ring	82	224774	1	. Fitting
	209539	2	.. Clamp Half	83	209508	1	. Fitting
38	11767	4	. Kit, Split Flange	84	249539	1	. Heater
	200604	4	.. Lockwasher	85	211398	1	. Draincock
	209537	2	.. Clamp Half	86	231908	1	. Fitting
	222379	4	.. Capscrew	87	581875	1	. Elbow
39	11759	2	. Kit, Split Flange	88	581903	1	. Fitting
	201567	4	.. Lockwasher	89	27360	1	. Gasket
	202201	4	.. Capscrew	90	226184	1	. Gasket
	203443	1	.. O-Ring	91	R13806980	2	. Flat Washer
	209535	2	.. Clamp Half	92	R13812514	2	. Lockwasher
40	581872	1	. Speed Sensor, Digital	93	R13811036	2	. Capscrew
41	229932	16	. Capscrew	94	581931	1	. Engine Configuration
42	234663	16	. Flat Washer	95	582310	1	. Fitting
43	209137	1	. Fitting	96	226202	1	. Threadlock, Hi-Temp
44	222615	42	. Flat Washer				
45	00103346	12	. Flat Washer				

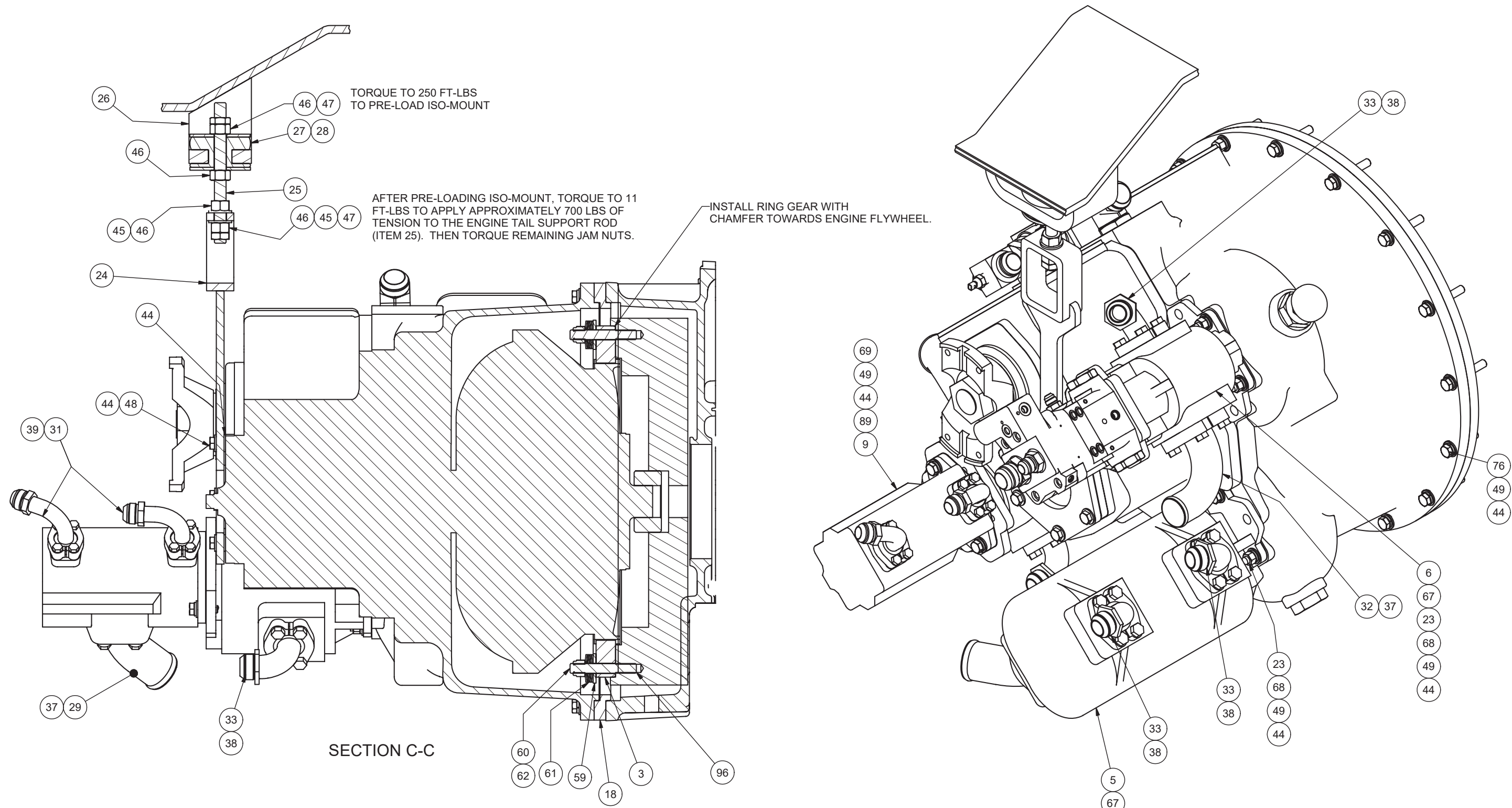
*a See Separate Coverage

*b The converter, ring gear, and many related components are different on units with kit 603675 installed. This kit changes the converter from a 16000 series to a 9000 series converter. Refer to that parts coverage for details.



INSTALLATION PORT FOR SENDER ITEM 15 IS LOCATED IN CAC PIPING.





TORQUE CONVERTER INSTALLATION NOTES

- 1) REMOVE ALL BURRS FROM FLYWHEEL MOUNTING FACE AND PILOT BORE. CLEAN WITH SOLVENT. CHECK ENGINE CRANKSHAFT "END PLAY", MUST BE THE SAME INDICATOR READING BEFORE AND AFTER THE TORQUE CONVERTER IS MOUNTED TO THE ENGINE.
- 2) USE LOCTITE (ITEM 96, P/N 226202) TO INSTALL STUDS (P/N 219670). TIGHTEN TO 90-100 FT-LBS TORQUE.
- 3) INSTALL RING GEAR (P/N 576613) BY TAPPING LIGHTLY INTO PLACE.
- 4) LUBRICATE STUD THREADS, BELLEVILLE WASHERS AND NUTS WITH SAE #10 OIL.
- 5) INSTALL BELLEVILLE WASHERS AND ELASTIC STOP NUTS AS SHOWN. TIGHTEN NUTS TO COMPLETELY FLATTEN BELLEVILLE WASHERS (TORQUE 90 - 100 FT-LBS).

