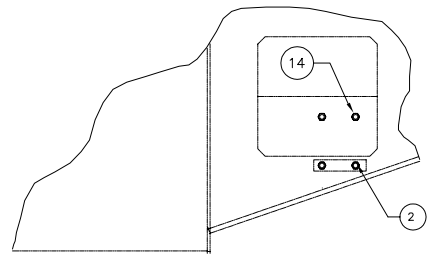
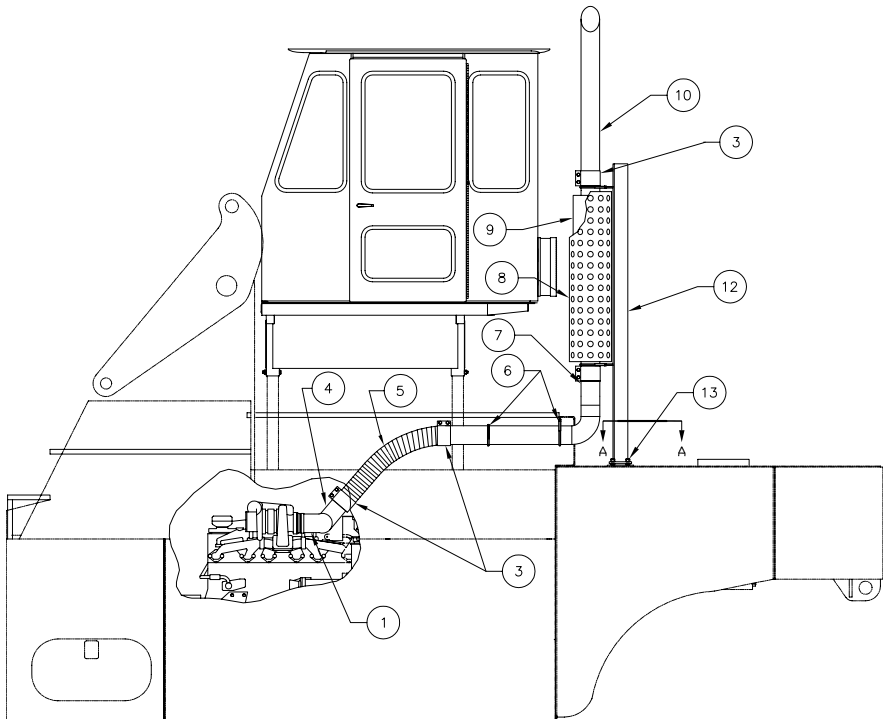
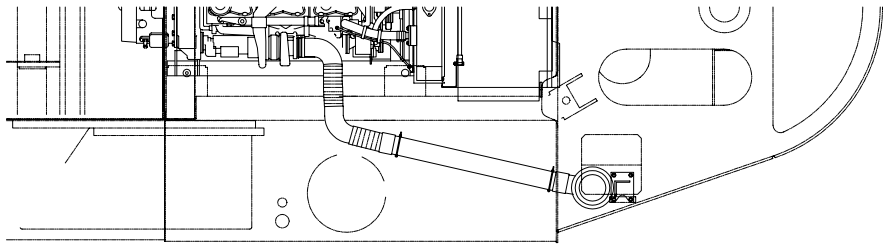


Exhaust System



SECTION A-A

ASSEMBLY NOTE:
 ASSEMBLE MUFFLER AND EXHAUST COMPONENTS AS SHOWN. LOOSEN CLAMPS ON ITEM 12 (SUPPORT WELDMENT), RUN ENGINE FOR 5 MINUTES AND TIGHTEN THE CLAMPS AFTER THE EXHAUST STACK HAS SETTLED.

Item	Part No.	Qty	Description	Item	Part No.	Qty	Description
	580857		Exhaust System				
1	564170	1	. Elbow Weldment, Exhaust	8	225562	1	. Guard Assembly, Muffler
2	568211	1	. Bar	9	557931	1	. Muffler
3	226586	4	. Seal Clamp	10	239233	1	. Exhaust Stack
4	216814	1	. Elbow	12	563462	1	. Support, Exhaust
5	218140	4'	. Tube, Flex	13	224121	4	. Nut, Esna
6	575244	2	. Clamp Weldment, Exhaust	14	201638	4	. Capscrew
7	575245	1	. Exhaust Weldment				