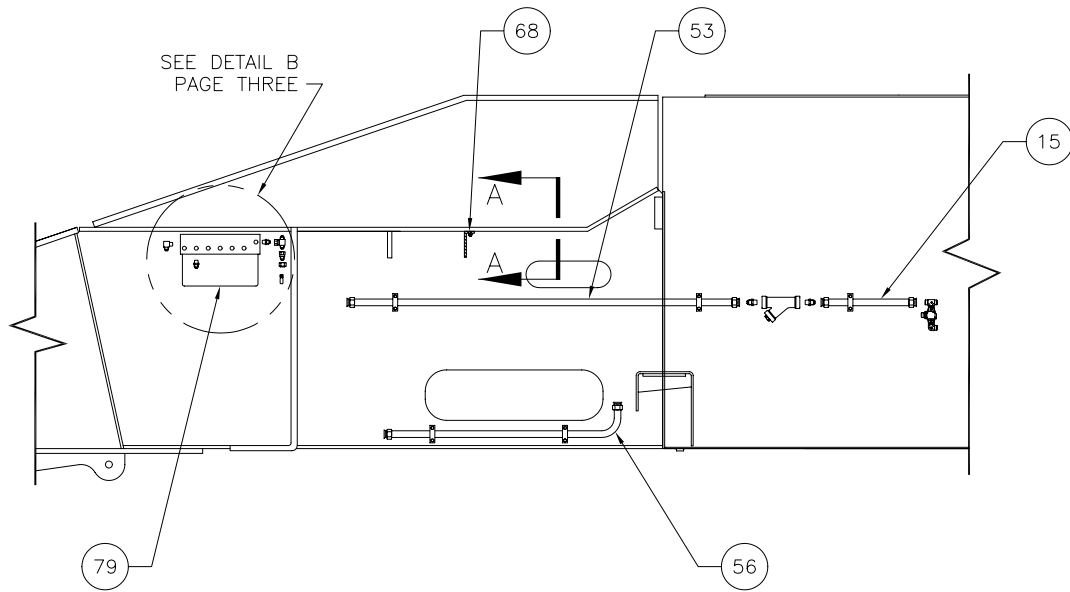
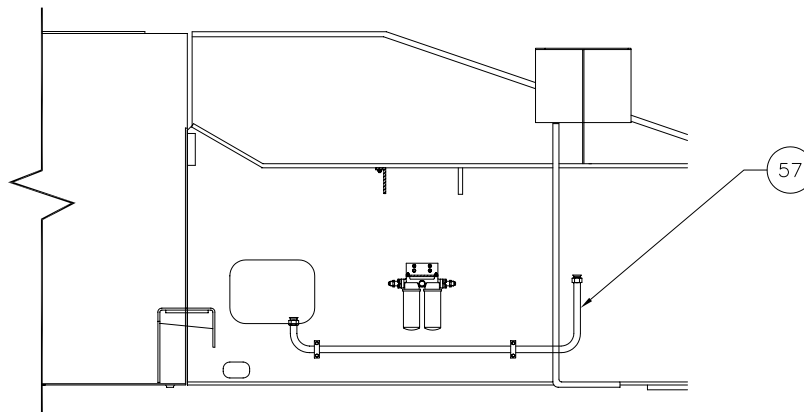

Transmission Circuit



REFERENCE VIEW

CHASSIS-INSIDE R.H.



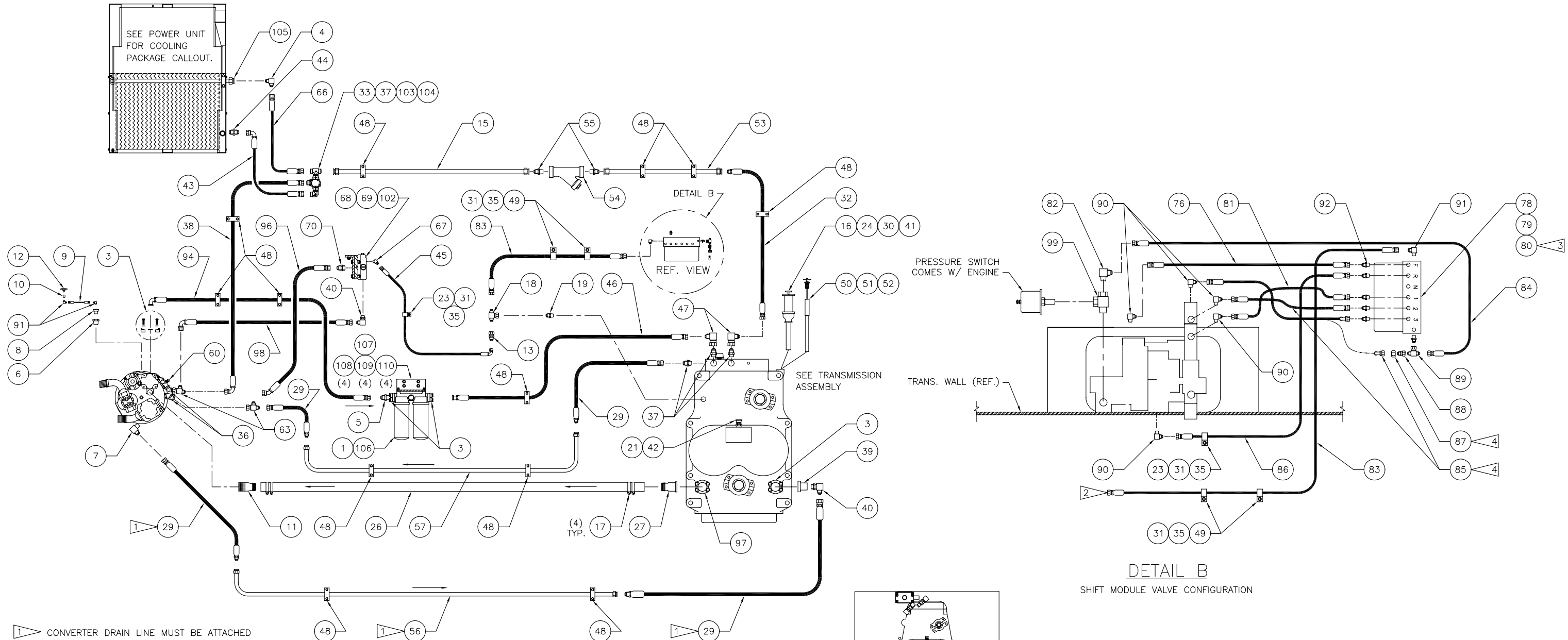
REFERENCE VIEW

CHASSIS-INSIDE L.H.

Transmission Circuit

Item	Part No.	Qty	Description	Item	Part No.	Qty	Description
	580843		Transmission Circuit				
1	247428	1	. Head Assy, Dual Spin-On Filter	52	564976	1	. Nipple, Pipe
	250359	2	. . Indicator, Filter	53	580882	1	. Tube Assembly
3	11767	4	. Kit, Split Flange	54	232994	1	. Strainer, Oil
	200604	4	. . Lockwasher	55	209191	2	. Fitting
	209537	2	. . Clamp Half	56	580883	1	. Tube Assembly
	222379	4	. . Capscrew	57	580884	1	. Tube Assembly
4	216027	1	. Fitting	60	249575	1	. Switch, Pressure
5	14248	1	. Fitting	63	214130	2	. Fitting
6	209510	1	. Fitting	66	245587	1	. Hose Assembly
7	209420	1	. Fitting	67	209794	1	. Fitting, Ff
8	240734	1	. Check Valve	68	562751	1	. Bracket
9	250128	1	. Hose Assembly	69	228640	1	. Converter, Bypass Reg
10	R13803988	1	. Fitting	70	209619	1	. Fitting
11	230466	1	. Fitting	76	208466	1	. Hose Assembly
12	240733	1	. Breather, Air	78	232054	4	. Capscrew
13	226904	1	. Fitting	79	* 578293	1	. Shift Valve, 24V
15	580881	1	. Tube Assembly	80	567040	1	. Bracket, Solenoid
16	521873	1	. Pipe	81	225872	1	. Hose Assembly
17	206289	4	. Hose Clamp	82	209409	1	. Fitting
18	211367	1	. Fitting	83	250167	1	. Hose Assembly
19	209757	1	. Fitting	84	20790	1	. Hose Assembly
21	209505	1	. Fitting	85	245839	2	. Hose Assembly
23	209588	1	. Clamp	86	237220	1	. Hose Assembly
24	225024	1	. Nipple, Pipe	87	212097	1	. Fitting
26	201439	5'	. Suction Hose	88	11906	1	. Fitting
27	218815	1	. Fitting	89	23578	1	. Fitting
29	241016	4	. Hose Assembly	90	209405	5	. Fitting
30	208202	1	. Fuel Cap	91	209411	1	. Fitting
31	223654	3	. Nut, Esna	92	209750	6	. Fitting
32	250162	1	. Hose Assembly	94	250166	1	. Hose Assembly
33	214129	1	. Fitting	96	250164	1	. Hose Assembly
35	222598	3	. Hard Washer	97	12721	1	. Kit, Split Flange
36	209167	2	. Fitting, Ff		200604	4	. . Lockwasher
37	210011	5	. Fitting		209538	2	. . Clamp Half
38	245835	1	. Hose Assembly		222379	4	. . Capscrew
39	506618	1	. Flange	98	250163	1	. Hose Assembly
40	209714	2	. Fitting	99	225105	1	. Fitting
41	209964	1	. Fitting	102	230338	2	. Capscrew
42	R238535	1	. Breather	103	246928	1	. Valve, Bypass
43	250121	1	. Hose Assembly	104	221140	1	. Fitting
44	209443	1	. Fitting	105	580441	1	. Tube Assembly
45	R11446	1	. Hose Assembly	106	247429	2	. Element
46	250165	1	. Hose Assembly	107	580324	1	. Bracket
47	210084	2	. Fitting	108	201604	4	. Capscrew
48	224347	12	. Clamp	109	230282	4	. Flat Washer
49	209696	2	. Clamp	110	225611	4	. Lockwasher
50	564977	1	. Dipstick Assembly				
51	229257	1	. Fitting				

* See Separate Coverage



1 CONVERSION DRAIN LINE MUST BE ATTACHED TO THE LOWEST CONVERTER DRAIN PORT & HAVE A CONTINUING SLOP TO THE TRANS.

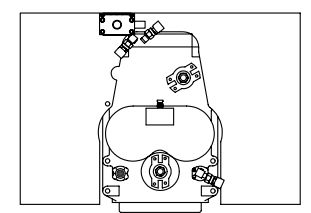
NOTE: THIS DIAGRAM IS FOR UNITS USING STD. HOSE WITH CAT 3406 ENGINE, CLARK 6000 TRANS. & 8000 CONVERTER WITH OUT LOCK UP.

SEE INSTRUMENT PANEL ASSY. FOR CONTINUATION OF CIRCUIT.

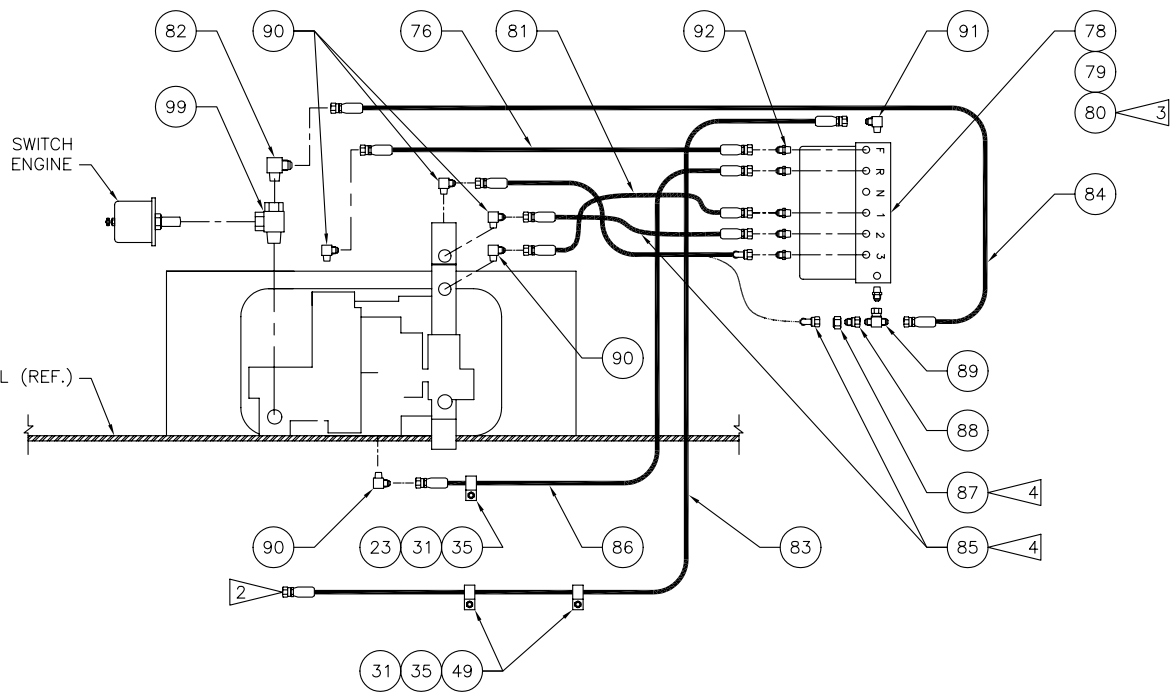
2 ATTACHES TO BUBBLE #18, SEE SHEET ONE.

3 SEE ANSI ELECTRICAL DIAGRAM FOR WIRE CONNECTIONS.

4 PLUMB AS SHOWN FOR STANDARD 4 SPEED RANGE. CAP PORT #3 AND PLUMB TO PRESSURE FOR OPTIONAL FOURTH GEAR LOCK OUT.



VIEW A-A
BYPASS REG. BRACKET LOCATION



DETAIL B
SHIFT MODULE VALVE CONFIGURATION