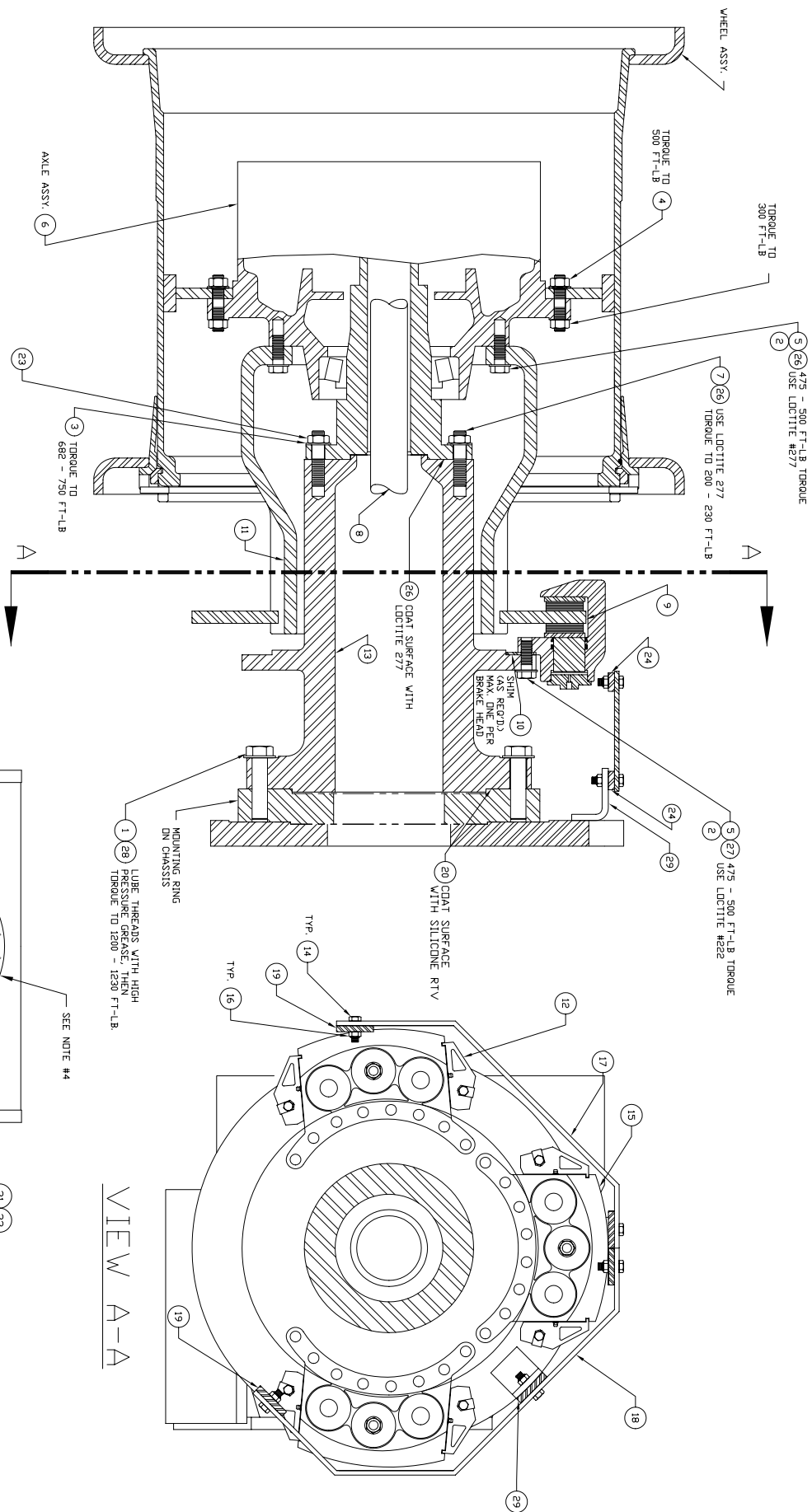

Axle Installation



NOTES:

1. MOUNT AXLE HOUSING SO THAT CALPERS WILL BE LOCATED FRONT, TOP AND REAR. USE MOBILE ATF-280 FOR BRAKE FLUID.
3. READ AND FOLLOW RFS54828 BURNISH INSTRUCTIONS WHENEVER NEW BRAKE PADS ARE INSTALLED.
4. DIFFERENTIAL AND CARRIER MUST BE MOUNTED WITH THE RING GEAR ON THE LEFT HAND SIDE OF THE PINION INPUT SHAFTS WHEN VIEWED FROM THE INPUT DRIVE YOKES.

Axle Installation

Item	Part No.	Qty	Description	Item	Part No.	Qty	Description
	580806		Axle Installation				
1	00223911	32	. Capscrew	17	574040	2	. Plate, LH Guard
2	204882	96	. Washer	18	574051	2	. Plate, RH Guard
3	248620	24	. Washer	19	563511	4	. Bracket
4	217768	68	. Nut	20	236308	1	. Silicone
5	218760	96	. Capscrew	21	200268	1	. Breather
6	* 249169	1	. Wheel End & Differential Kit	22	227807	1	. Fitting
7	219246	24	. Stud	23	223433	24	. Nut
8	547338	2	. Axle Shaft	24	574065	4	. Bracket
9	544408	2	. Plate, Disc Brake	25	201319	1	. Plate, Magnetic
10	545267	A/R	. Shim	26	222689	1	. Threadlock
11	545335	2	. Driver, Disc Brake	27	226202	1	. Threadlock
12	* 570733	4	. Caliper, Brake	28	225851	32	. Washer
13	574001	2	. Axle Extension	29	580795	4	. Bracket
14	201635	14	. Capscrew				
15	* 569926	2	. Caliper, Brake				
16	224202	14	. Nut				

* See Separate Coverage
A/R = As Required