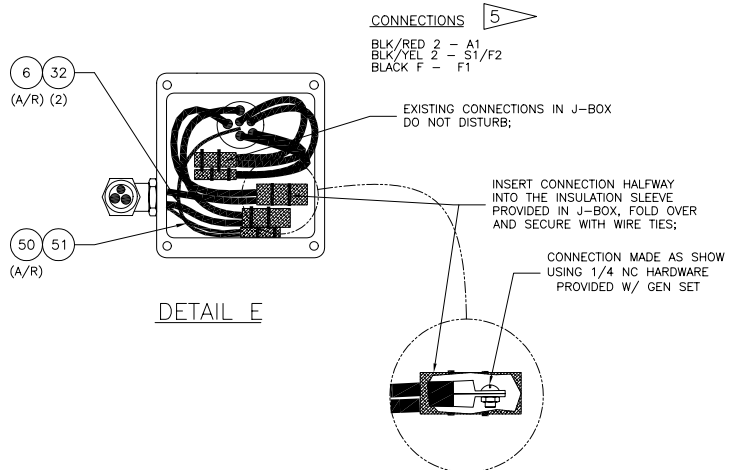
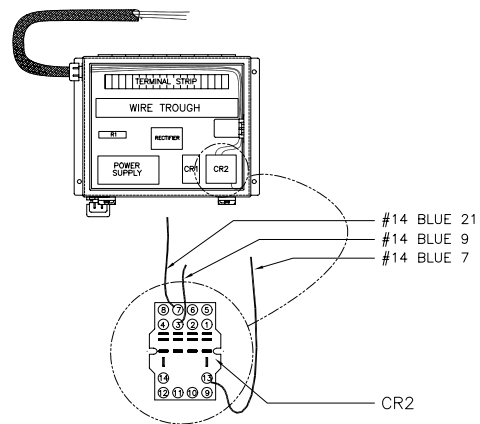
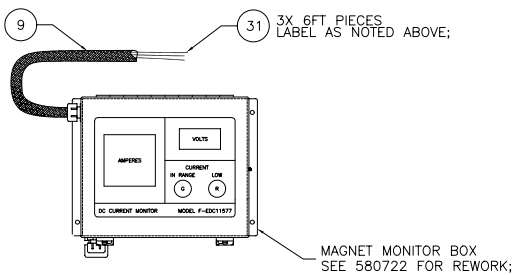
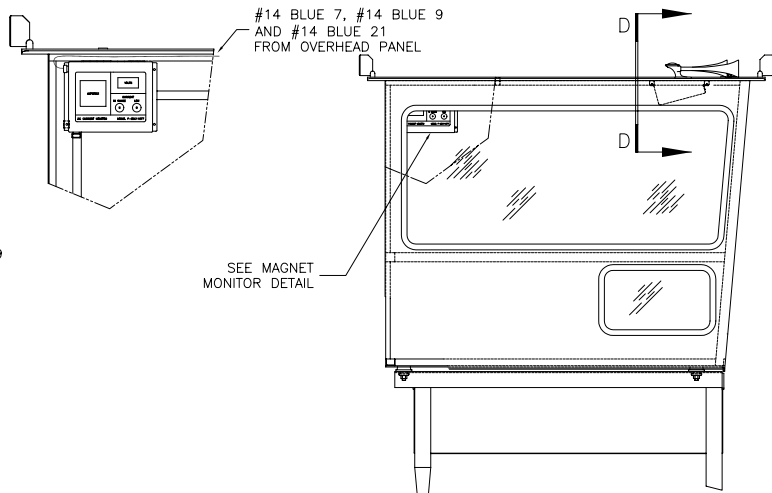
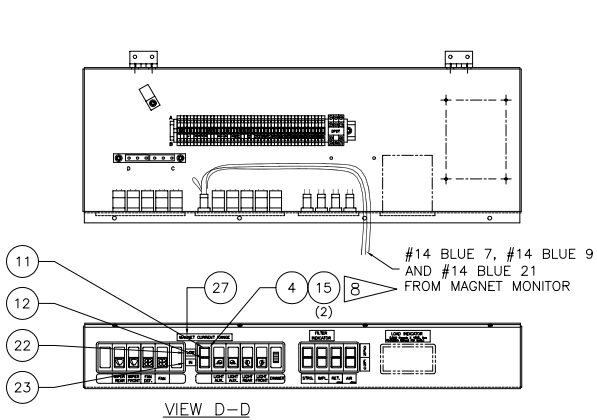
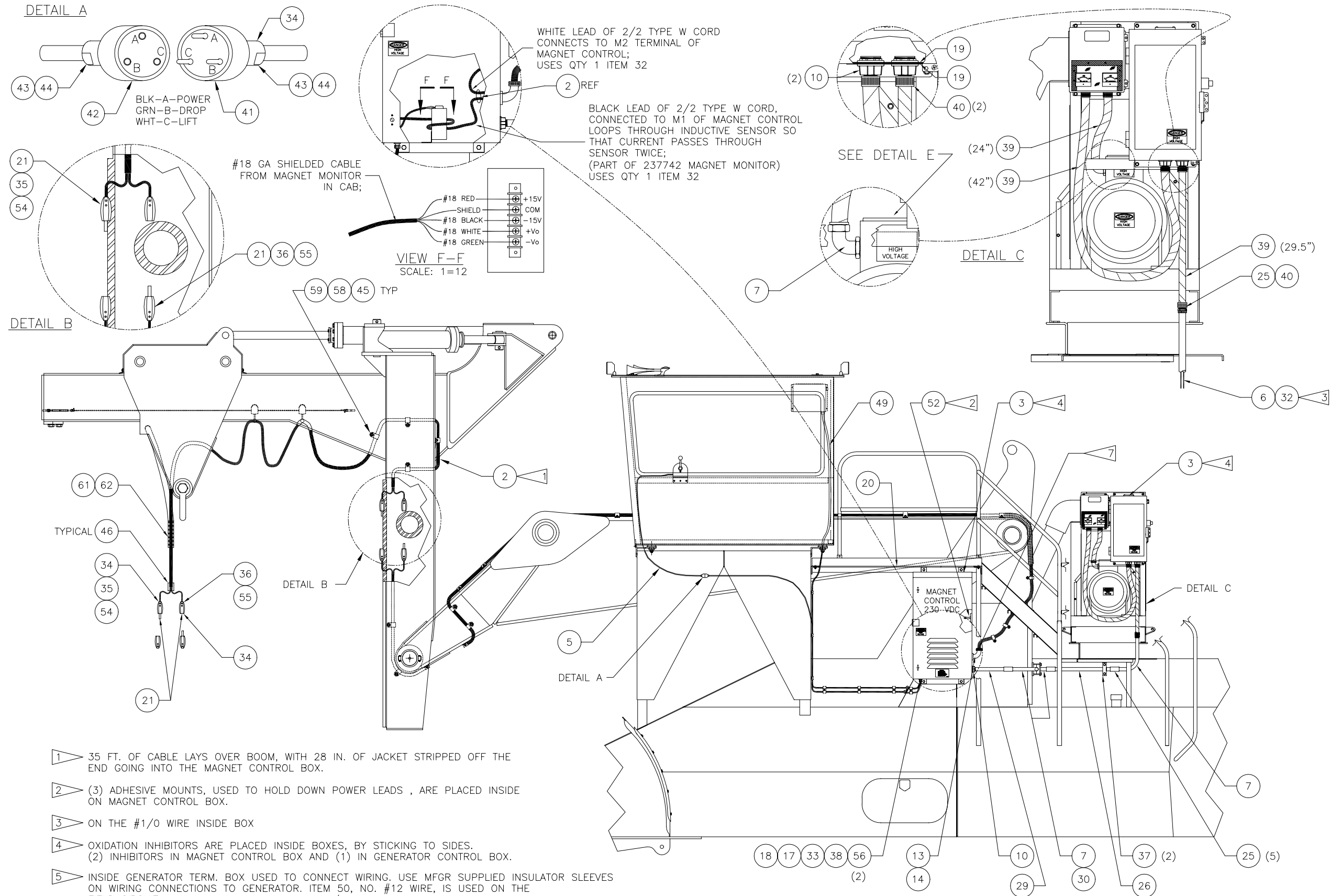

Electrical Assembly, Magnet



Electrical Assembly, Magnet

Item	Part No.	Qty	Description	Item	Part No.	Qty	Description
	580725		Electrical Assembly, Magnet				
1	* 580730	1	. Wiring Diagram, Magnet	31	219405	18'	. Wire
2	235371	80'	. Cable	32	235413	6	. Terminal Lug
3	20294	4	. Oxidation Inhibitor	33	223759	1	. Connector, Cord
4	236502	1	. Pilot Lamp	34	232620	2'	. Tube, Ht/Srk
5	208788	25'	. Cord, So	37	235441	2	. Clamp
6	230991	75'	. Cable	38	220057	1	. Ring Nut
7	17146	3	. Elbow, Conduit	39	20284	10'	. Conduit, Flex
8	22783	1	. Connector, Flex	40	20283	3	. Connector, Flex
9	219392	2'	. Loom, Auto	41	235414	1	. Receptacle
10	22785	3	. Hub	42	27655	1	. Plate, Str
11	236503	1	. Lens, Reducer	43	235415	2	. Clamp, Cable
12	236504	1	. Lens, Green	44	235416	2	. Bushing
13	226157	1	. Ring Nut	45	209699	20	. Clamp
14	232301	1	. Connector, Cord	46	250130	2	. Boot, Ht/Srk
15	237187	2	. Lamp, 12V	49	236917	18'	. Cord, Sdn
17	227374	1	. Connector, Cord	50	219431	5'	. Wire
18	220577	1	. Connector, Cord	51	221179	1	. Terminal Ring
19	580763	2	. Platereinf	52	220949	20	. Mount, Adhesive Back
20	571936	1	. Control Mount Weldment	53	225221	2'	. Tube, Ht/Srk
21	235266	4	. Connector Set	56	220582	2	. Ring Nut
22	572133	1	. Decal	57	225318	1	. Boot, Rubber
23	572134	1	. Decal	58	231706	20	. Stud
25	17147	6	. Coupling, Conduit	59	223654	22	. Nut
26	25206	1	. Conduit, Rigid	61	211790	10'	. Spirap
27	572135	1	. Decal	62	235396	1	. Grip, Support
29	569730	1	. Nipple, Conduit				
30	569729	1	. Nipple, Conduit				

* See Separate Coverage



- 1 35 FT. OF CABLE LAYS OVER BOOM, WITH 28 IN. OF JACKET STRIPPED OFF THE END GOING INTO THE MAGNET CONTROL BOX.
- 2 (3) ADHESIVE MOUNTS, USED TO HOLD DOWN POWER LEADS , ARE PLACED INSIDE ON MAGNET CONTROL BOX.
- 3 ON THE #1/0 WIRE INSIDE BOX
- 4 OXIDATION INHIBITORS ARE PLACED INSIDE BOXES, BY STICKING TO SIDES. (2) INHIBITORS IN MAGNET CONTROL BOX AND (1) IN GENERATOR CONTROL BOX.
- 5 INSIDE GENERATOR TERM. BOX USED TO CONNECT WIRING. USE MFR SUPPLIED INSULATOR SLEEVES ON WIRING CONNECTIONS TO GENERATOR. ITEM 50, NO. #12 WIRE, IS USED ON THE FIELD CIRCUIT. SEE ELECTRICAL SCHEMATIC P/N 580730 FOR WIRING.
- 6 USE STD PIPE THREAD SEALING COMPOUND ON HARD CONDUIT CONNECTIONS;
- 7 STRIP INSULATION BACK 56" BEFORE INSERTING CORD INTO CORD CONNECTOR. BE SURE SEAL ON CORD CONNECTOR IS OVER PORTION OF SO CORD JACKET PRIOR TO TIGHTENING;
- 8 REPLACE 24V LAMP WITH 12 V LAMP (ITEM 15) FOR EACH SOCKET IN PILOT LAMP ASSEMBLY;