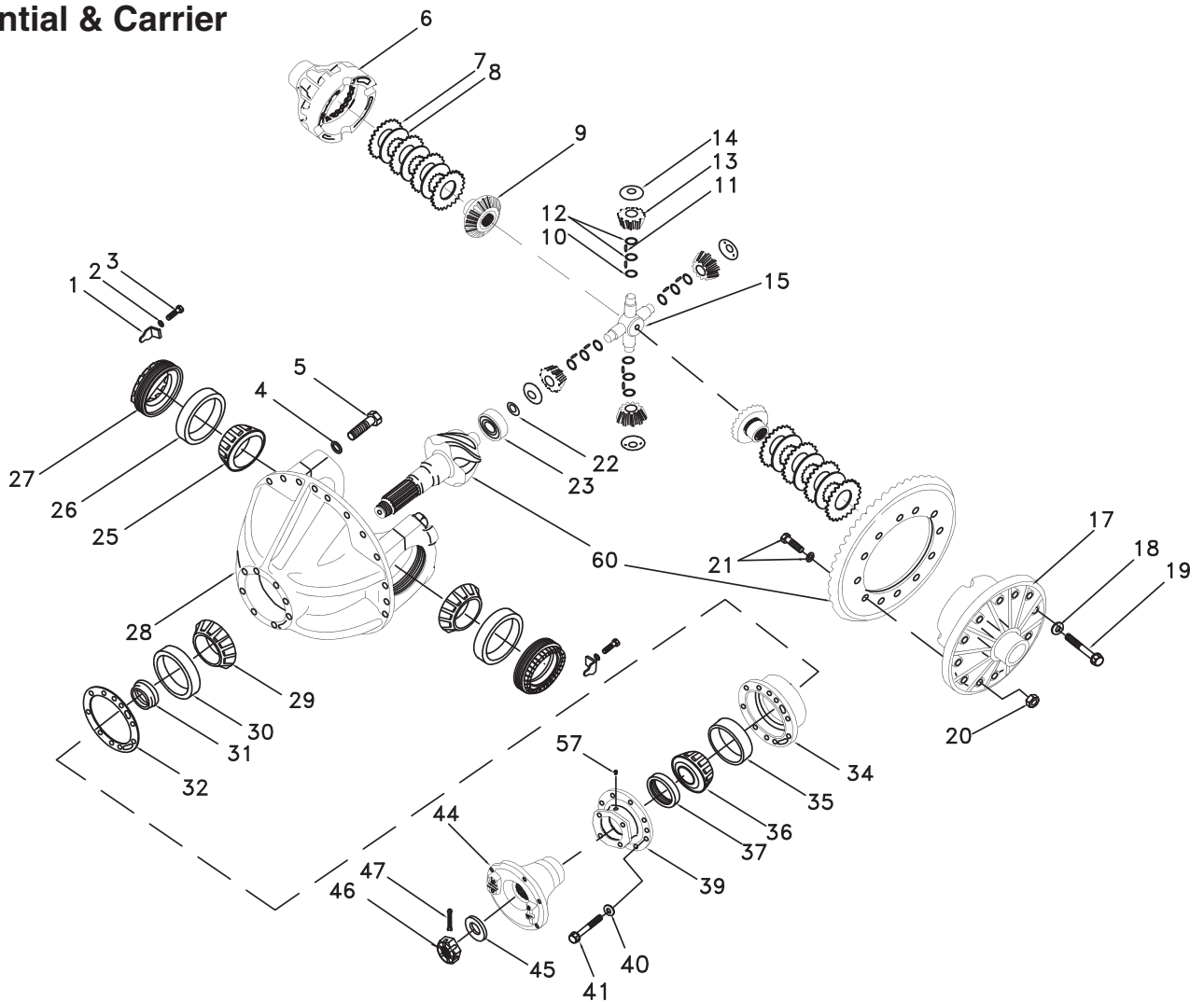


Differential & Carrier



Item	Part No.	Qty	Description	Item	Part No.	Qty	Description
	<b>580700</b>		<b>Differential &amp; Carrier</b>				
1	219339	2	. Lock	29	*e 217703	1	. Bearing Cone
2	R13800829	2	. Lockwasher	30	*e 217702	1	. Bearing Cup
3	201613	2	. Capscrew	31	*e 218182	1	. Shim Kit
4	232349	4	. Lockwasher	32	*e 218050	A/R	. Shim
5	224282	4	. Bolt	32	*e 218051	A/R	. Shim
6	*b*c NSS	1	. Case, Plain Half	34	217697	1	. Cage & Cup (Inc. items 30 & 35)
7	*c 240439	6	. Outer Disc, Clutch	35	*e 201141	1	. Bearing Cup
8	*c 240440	4	. Inner Disc, Inner	36	*e 213645	1	. Bearing Cone
9	*a*c 242482	2	. Side Gear	37	*e 205724	1	. Oil Seal
10	*c*e 240441	4	. Inner Spacer	39	218048	1	. Retainer
11	*c*e 240442	192	. Needle Roller	40	200608	8	. Lockwasher
12	*c*e 240443	8	. Outer Spacer	41	221659W	8	. Bolt
13	*a*c NSS	1	. Pinion Gear Kit	44	200949	1	. Flange
14	*c*e 211967	4	. Thrust Washer	45	200951	1	. Washer
15	*c 240445	1	. Spider	46	200950	1	. Nut
17	*b*c NSS	1	. Case, Flange Half	47	212141	1	. Cotter Pin
18	*b*c 207488	12	. Washer	57	200628	1	. Pipe Plug
19	*b*c 240446	12	. Bolt	60	217706	1	. Ring & Pinion Set
20	*e R13804178	12	. Nut				
20	*e R4094988	12	. Washer				
21	*e 240447	12	. Bolt				
22	*e 201095	1	. Snap Ring				
23	*e 201145	1	. Bearing				
25	*e 201139	2	. Bearing Cone				
26	*e 201138	2	. Bearing Cup				
27	219345	2	. Adjusting Nut				
28	*d 240449	1	. Carrier Assy (Inc. items 4 & 5)				

NSS Not Sold Separately

A/R As Required

\*a Included in 240444 Pinion & Side Gear Kit

\*b Included in 240454 Case Kit

\*c Included in 234545 Differential Sub-Assembly

\*d Includes twelve (12) 217874 Dowels - not illustrated

\*e Included in 584264 Service Kit