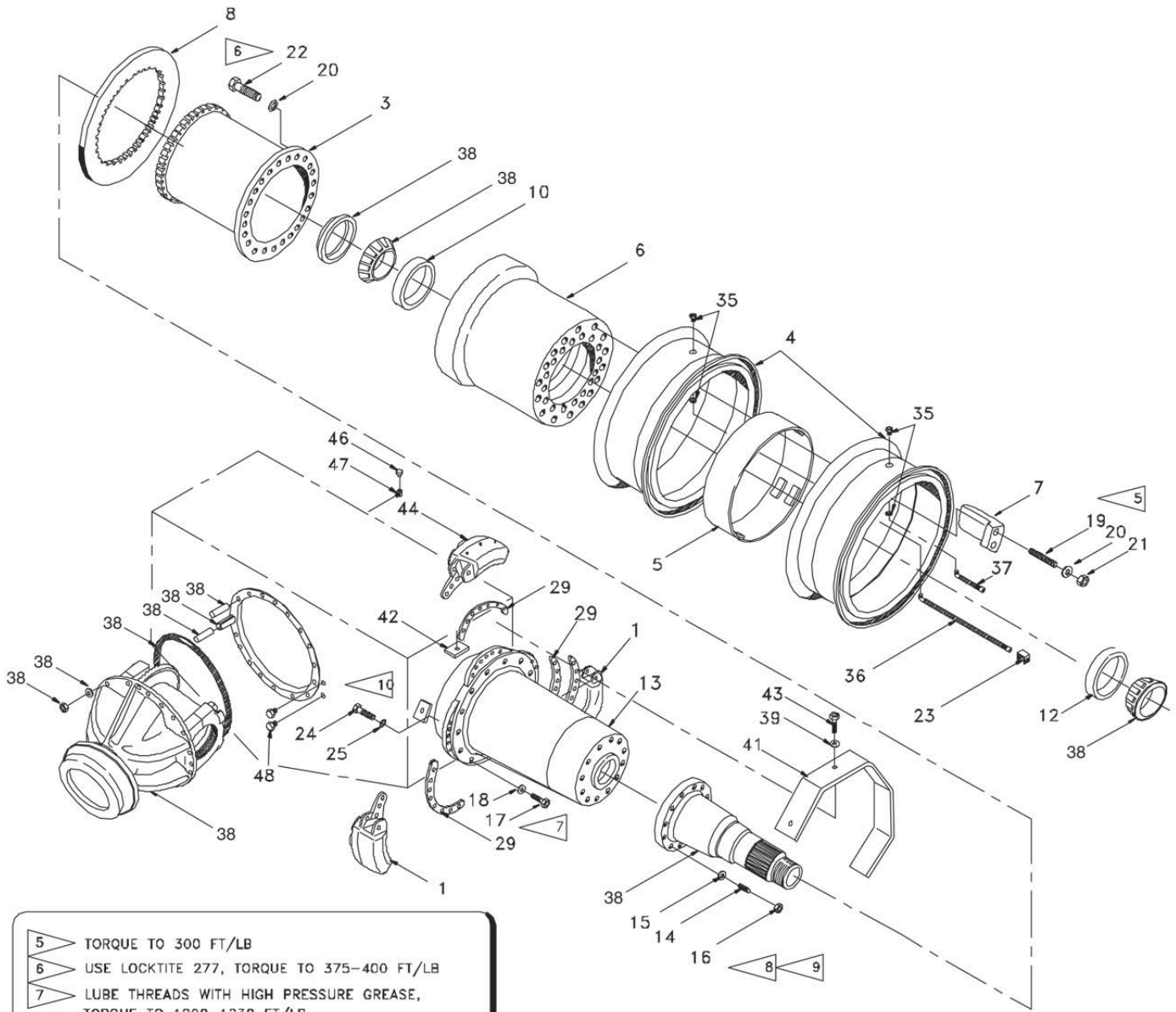

Drive Axle



- | | |
|----|---|
| 5 | TORQUE TO 300 FT/LB |
| 6 | USE LOCKTITE 277, TORQUE TO 375-400 FT/LB |
| 7 | LUBE THREADS WITH HIGH PRESSURE GREASE, TORQUE TO 1200-1230 FT/LB |
| 8 | USE LOCKTITE 277, TORQUE STUD TO 200-230 FT/LB |
| 9 | TORQUE NUT TO 682-750 FT/LB |
| 10 | USE LOCKTITE 272, TORQUE TO 475-500 FT/LB |

Drive Axle

Item	Part No.	Qty	Description	Item	Part No.	Qty	Description
	580684		Drive Axle				
1	* 570733	4	. Disc Brake Caliper Assembly	25	00103347	48	. Flat Washer
3	563899	2	. Driver,Disc Brake	28	547338	2	. Axle Shaft
4	* 229546	4	. Wheel Assembly, Drive	29	545267	6	. Shim
5	566386	2	. Wheel Spacer	35	219142	4	. Spud
6	566338	2	. Hub	36	233938	2	. Stem, Valve
7	563937	18	. Clamp,Dual Wheel	37	219144	2	. Stem, Valve
8	563921	2	. Plate	38	* 580699	1	. Wheel and Differential Kit
10	216147	2	. Bearing Cup	39	224202	6	. Nut, Esna
12	201143	2	. Bearing Cup	41	577169	1	. Guard, Rh
13	569905	2	. Axle Housing	42	572777	6	. Bar
14	219246	24	. Stud	43	201635	6	. Capscrew
15	248620	24	. Hard Washer	44	* 569926	2	. Disc Brake Caliper Assembly
16	223433	24	. Nut, Esna	45	236308	A/R	. Silicone
17	00223911	32	. Capscrew	46	200268	1	. Breather
18	225851	32	. Hard Washer	47	00120062	1	. Bushing, Reducer
19	225466	36	. Stud	48	209916	2	. Fitting
20	225176	84	. Hard Washer	49	242864	A/R	. Additive
21	225468	36	. Nut	50	NI 577170	1	. Guard Weldment, Lh
22	00186729	48	. Capscrew				
23	570913	2	. Tab				
24	00271656	48	. Capscrew				
					*		See Separate Coverage
					NI		Not Illustrated
					A/R		As Required