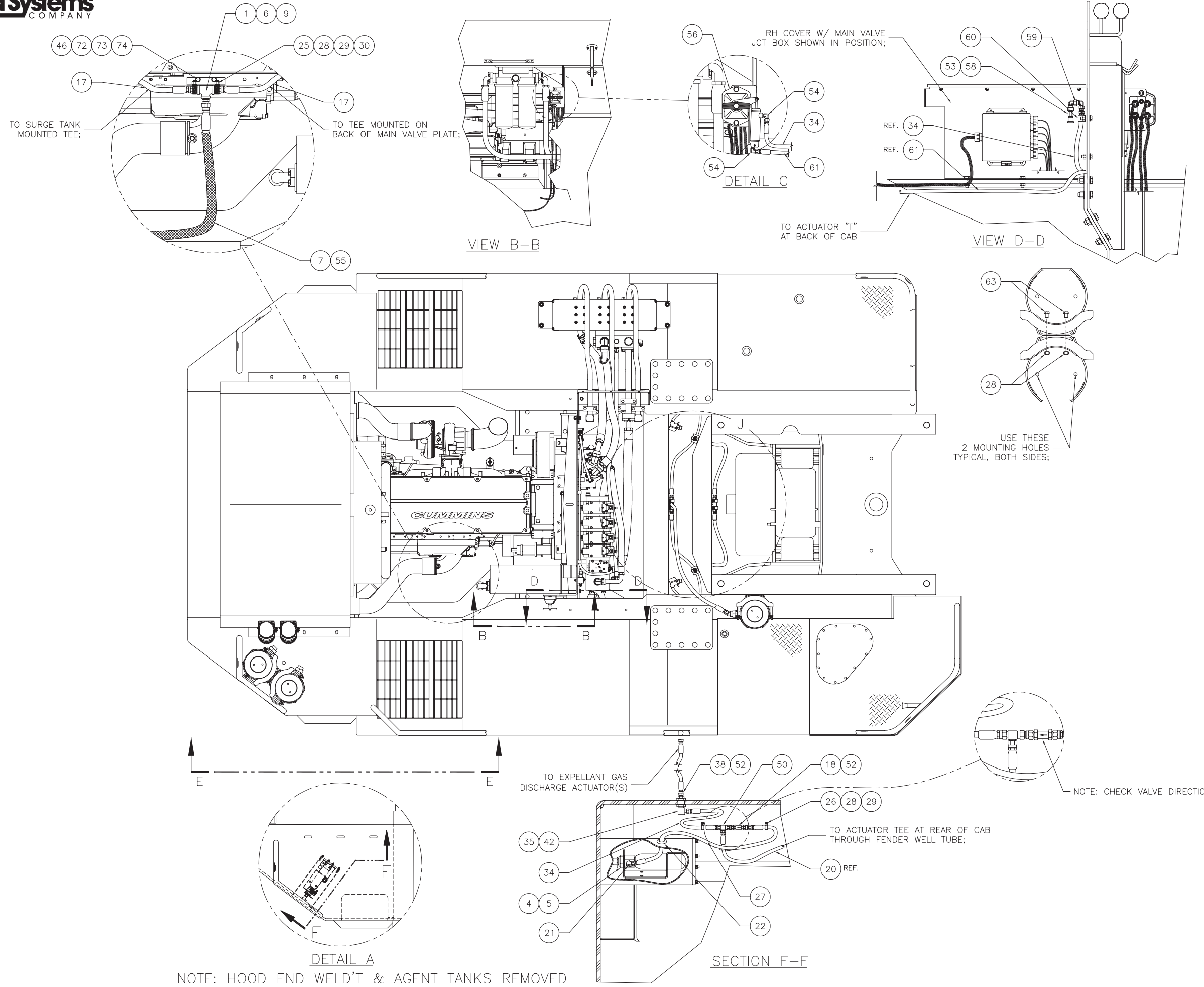
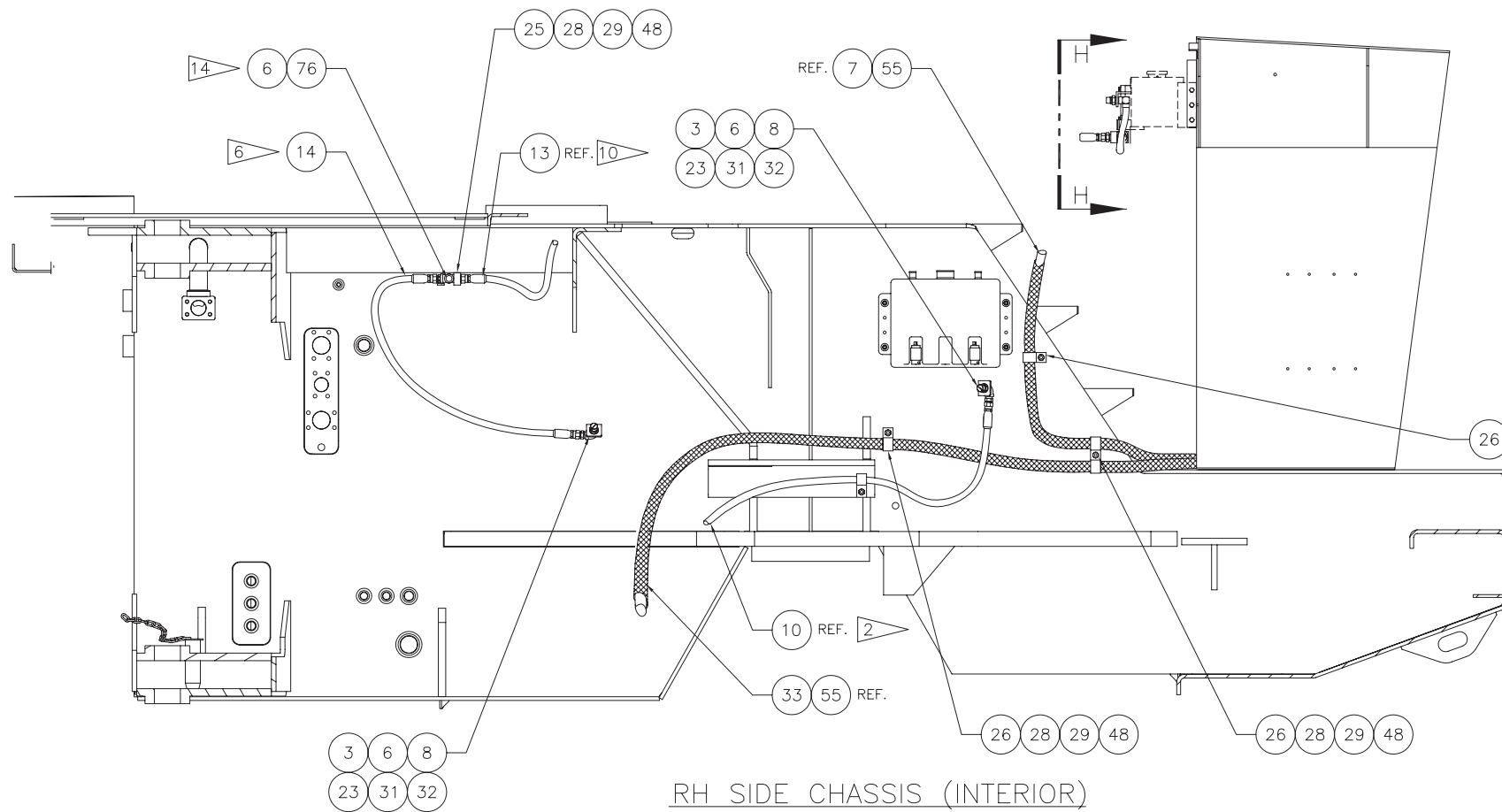

Fire Suppression System - Chassis

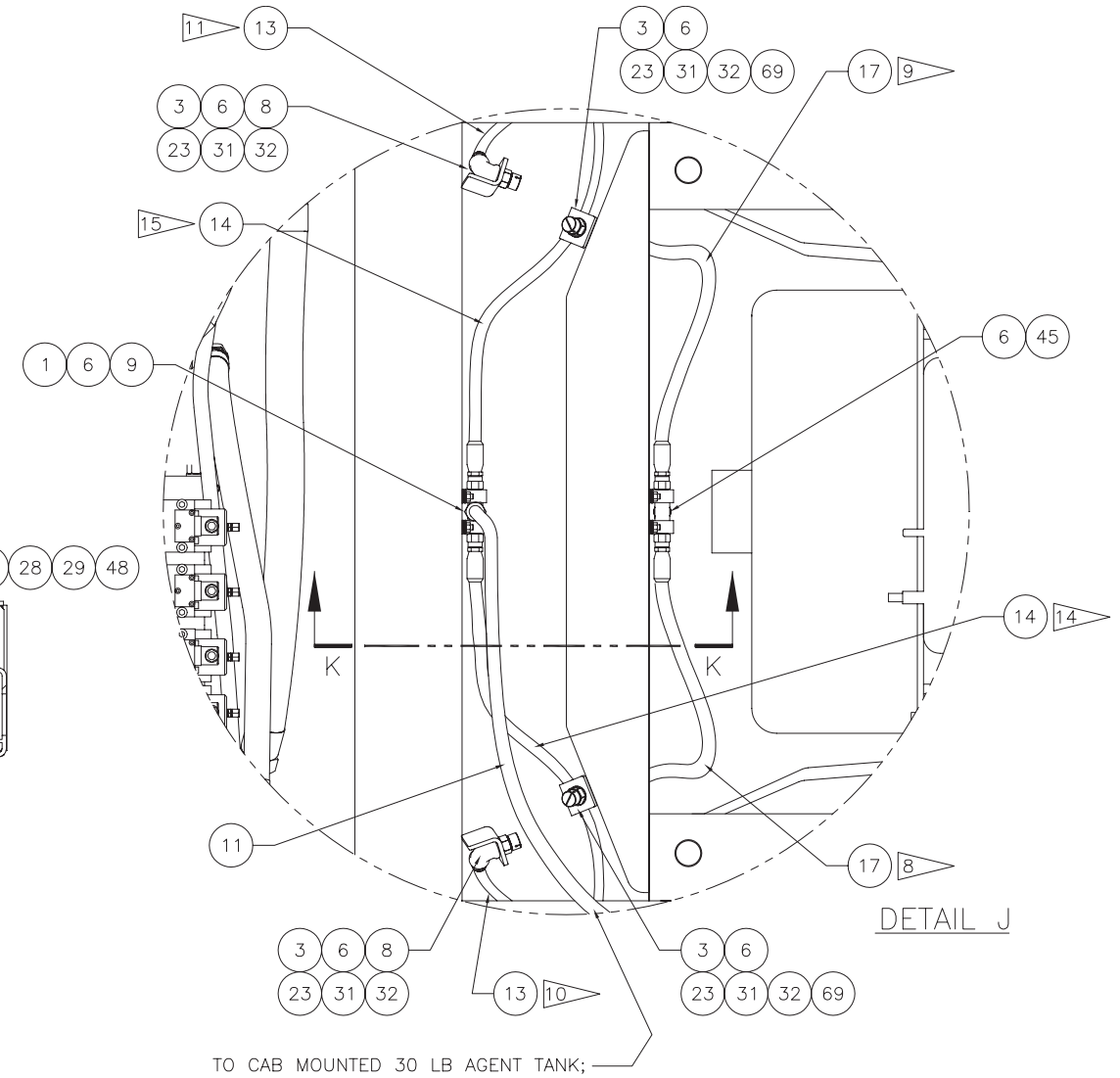
Fire Suppression System - Chassis

Item	Part No.	Qty	Description	Item	Part No.	Qty	Description
	580610		Fire Suppression Syst - Chassis				
1	252051	3	. Tee, Reducer	39	248751	2	. Tank, Dry Chem W/Bracket
2	201634	4	. Capscrew	40	221961	2	. Cartridge
3	225143	12	. Nozzle, Fire Ext	41	223326	2	. Actuator, Pneumatic
4	225172	1	. Actuator	42	241845	1	. Fitting
5	225177	1	. Cartridge, Nitrogen	43	222677	4	. Flat Washer
6	209393	36	. Fitting	44	227398	4	. Clamp
7	203972	1	. Hose Assembly	45	223041	2	. Bracket, Mounting
8	00119098	10	. Elbow, Pipe	46	00103340	18	. Flat Washer
9	209759	3	. Fitting	47	224209	8	. Nut, Esna
10	217437	2	. Hose Assembly	48	221468	10	. Stud, Weld
11	207479	1	. Hose Assembly	50	213883	1	. Fitting
12	217252	2	. Hose Assembly	51	R13810993	8	. Capscrew
13	216474	2	. Hose Assembly	52	209752	5	. Fitting
14	216450	6	. Hose Assembly	53	210299	1	. Air Cleaner
15	216481	2	. Hose Assembly	54	209405	2	. Fitting
16	225135	1	. Hose Assembly	55	242687	15'	. Sleeve, Fire
17	216455	4	. Hose Assembly	56	249106	1	. Switch, Batt Discnt
18	226271	1	. Check Valve	57	246927	-1	. Switch, Batt Discnt
20	217432	1	. Hose Assembly	58	209775	1	. Fitting
21	209394	1	. Fitting	59	212718	2	. Fitting
22	208264	1	. Grommet	60	209589	1	. Clamp
23	225250	24	. Lockwasher	61	216459	1	. Hose Assembly
24	209579	2	. Clamp	62	216457	1	. Hose Assembly
25	209696	10	. Clamp	63	201604	3	. Capscrew
26	209699	5	. Clamp	65	216477	3	. Hose Assembly
27	217146	1	. Hose Assembly	66	581949	1	. Tube Assembly
28	223654	20	. Locknut	67	R1939857	1	. Bracket
29	00103341	50	. Flat Washer	68	205128	1	. Lockwasher
30	201602	5	. Capscrew	69	252052	2	. Coupling, Pipe
31	218690	12	. Bracket	70	242755	1	. Clamp
32	237129	12	. Cap, Blow-Off	71	218701	1	. Hose Assembly
33	215073	1	. Hose Assembly	72	581959	1	. Angle, Mounting
34	217247	3	. Hose Assembly	73	R13809365	2	. Capscrew
35	209406	2	. Fitting	74	R13812513	2	. Lockwasher
36	209799	1	. Fitting	75	216489	1	. Hose Assembly
37	209512	1	. Fitting	76	249733	5	. Tee, Pipe
38	234109	2	. Hose Assembly				





RH SIDE CHASSIS (INTERIOR)

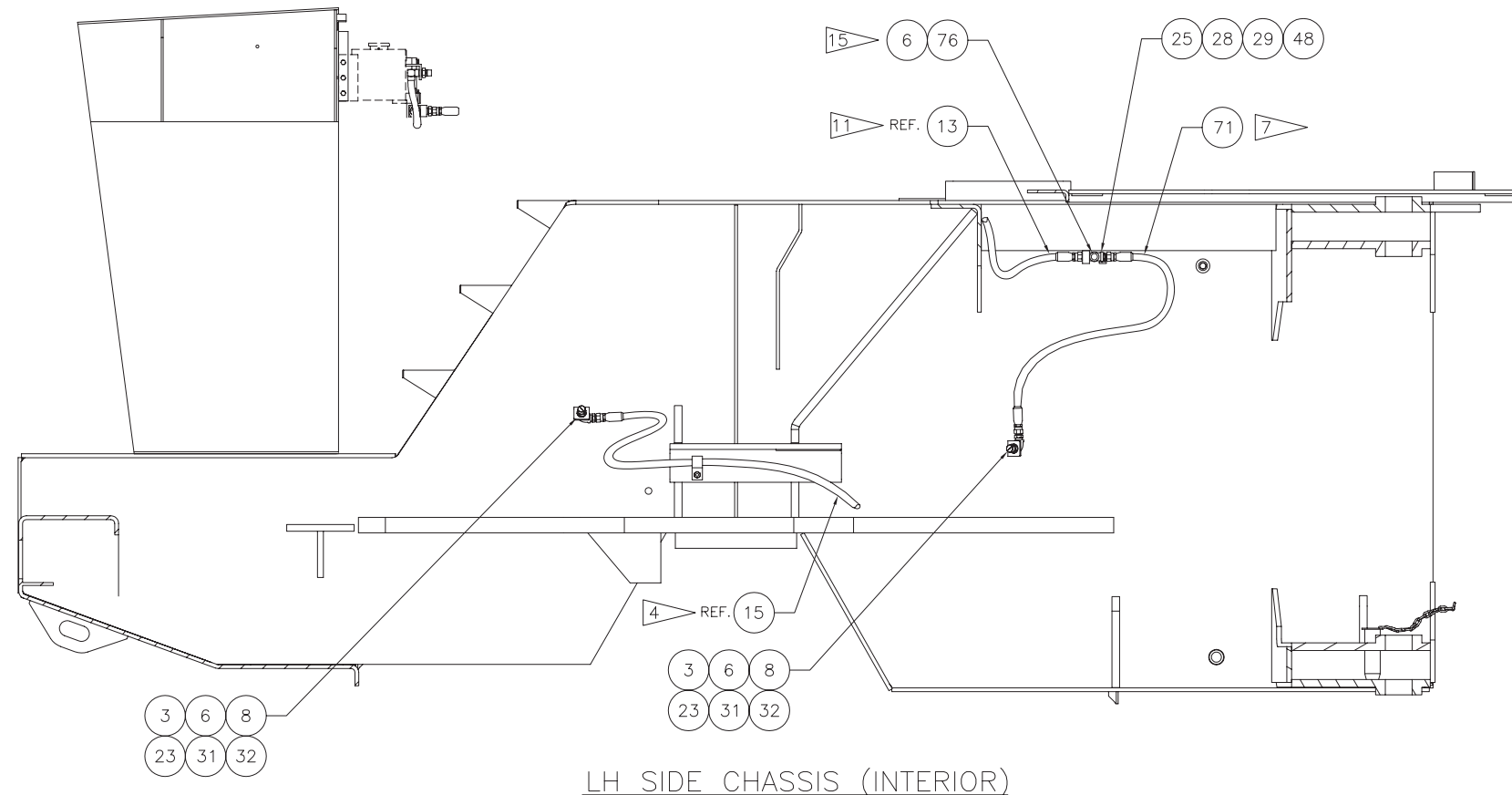


DETAIL J

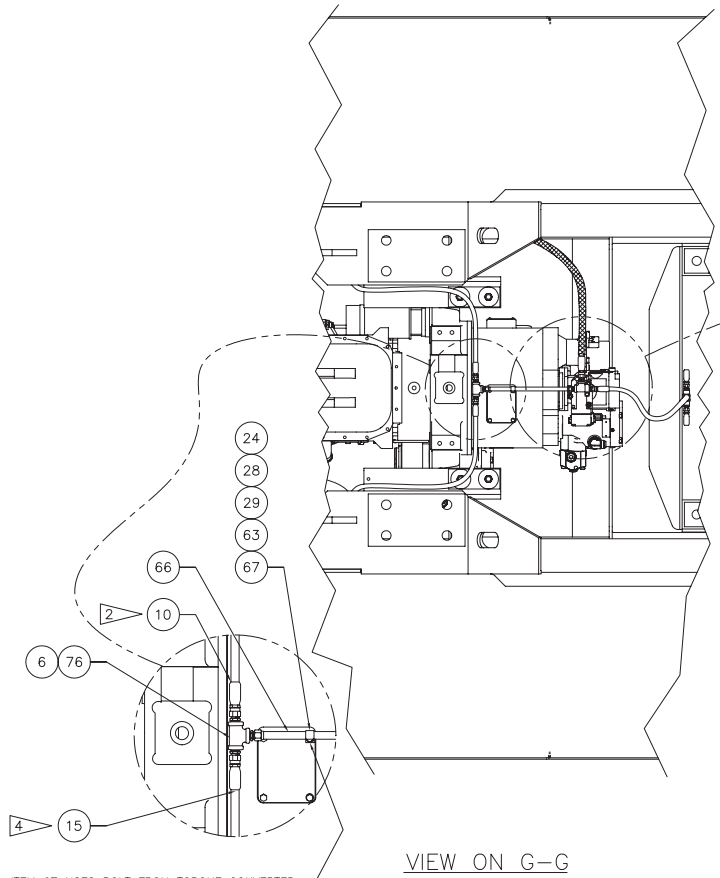
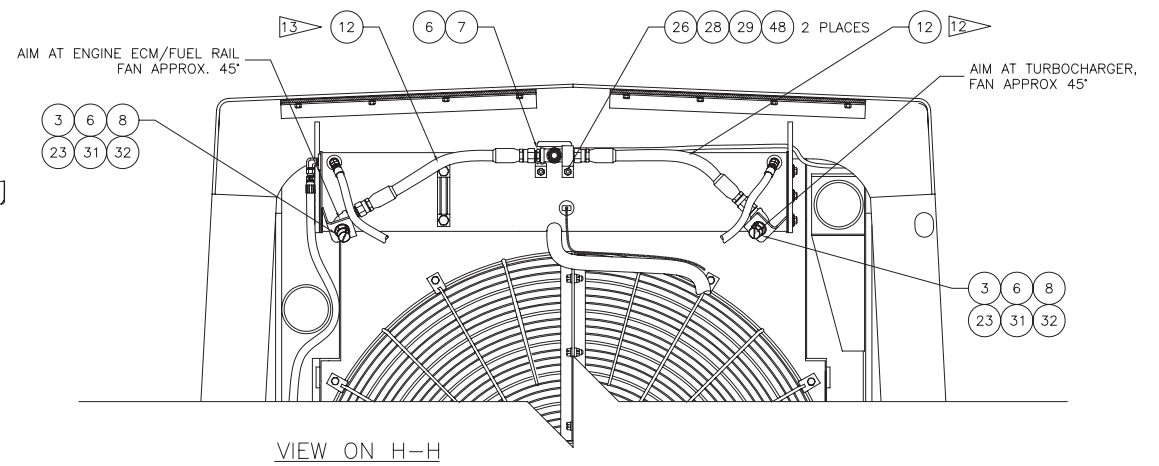
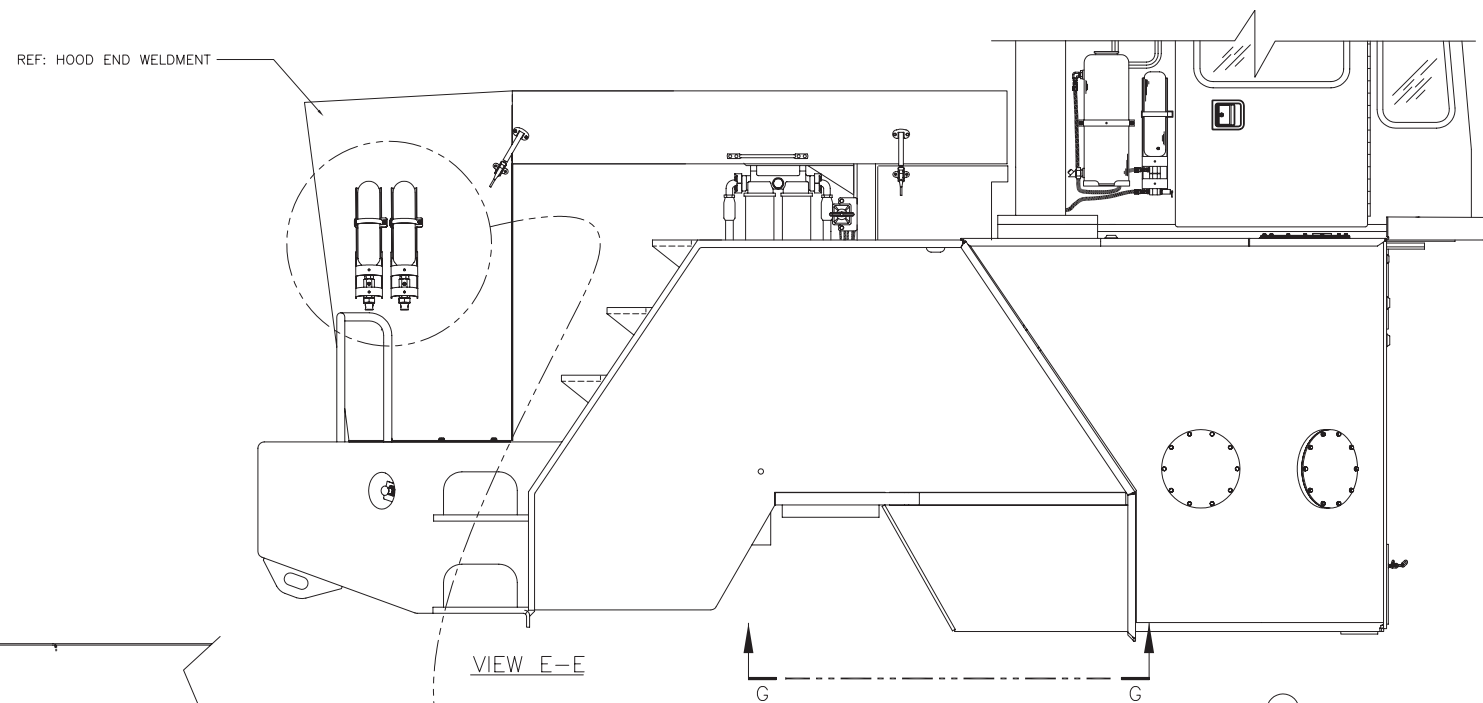
TO CAB MOUNTED 30 LB AGENT TANK;

NOTES:

- 1 ANSUL RECOMMENDS THAT THE FOLLOWING MINIMUM RADII: (MEASURED TO INSIDE OF HOSE RADIUS)
#8 HOSE 5.50 INCHES
#10 HOSE 7.50 INCHES
#12 HOSE 9.50 INCHES
- 2 TO NOZZLE DIRECTED FROM RH BELOW, AT STARTER, FUEL PUMP/FILTER HAZARD ZONE;
- 3 TO NOZZLE DIRECTED FROM RH ABOVE, AT STARTER, FUEL PUMP, BATTERY CABLE HAZARD ZONE;
- 4 TO NOZZLE DIRECTED FROM LH BELOW, AT TURBOCHARGER, EXHAUST HAZARD ZONE;
- 5 TO NOZZLE DIRECTED FROM LH ABOVE, AT TURBOCHARGER, EXHAUST HAZARD ZONE;
- 6 TO NOZZLE DIRECTED FROM RH BELOW, AT TORQUE CONVERTER AND PUMP HAZARD ZONE;
- 7 TO NOZZLE DIRECTED FROM LH BELOW, AT TORQUE CONVERTER AND PUMP HAZARD ZONE;
- 8 TO NOZZLE DIRECTED FROM RH SIDE AT MAIN VALVE PLATE HAZARD ZONE;
- 9 TO NOZZLE DIRECTED FROM LH SIDE AT MAIN VALVE PLATE HAZARD ZONE;
- 10 TO NOZZLE DIRECTED FROM ABOVE RH SIDE AT TRANSMISSION VALVE HAZARD ZONE;
- 11 TO NOZZLE DIRECTED FROM ABOVE LH SIDE AT TRANSMISSION VALVE HAZARD ZONE;
- 12 TO NOZZLE DIRECTED FROM ABOVE LH SIDE AT TURBOCHARGER, EXHAUST HAZARD ZONE; (SURGE TANK MOUNTED NOZZLE)
- 13 TO NOZZLE DIRECTED FROM RH ABOVE, AT TRANS FILTER, ECM, BATTERY CABLE HAZARD ZONE; (SURGE TANK MOUNTED NOZZLE)
- 14 FROM REDUCING TEE TO TEE MOUNTED ON RH CHASSIS INTERIOR;
- 15 FROM REDUCING TEE TO TEE MOUNTED ON LH CHASSIS INTERIOR;



LH SIDE CHASSIS (INTERIOR)



ITEM 67 USES BOLT FROM TORQUE CONVERTER INSPECTION COVER TO MOUNT. BEND/ADJUST BRACKET TO ACCOMMODATE ANGLE OF COVER;

