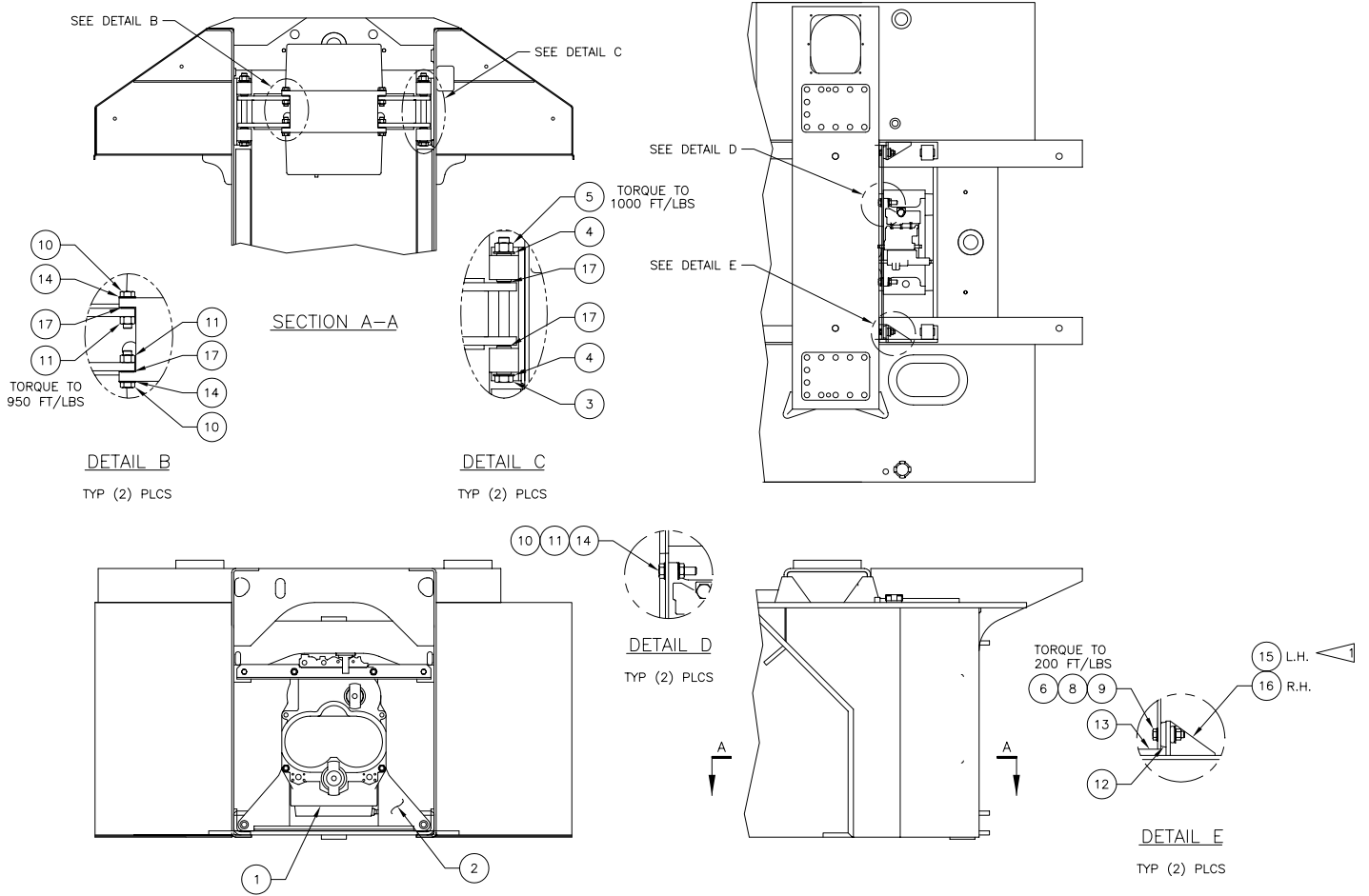


Transmission Installation



1 TORQUE ALL ISOLATION DAMPERS TO INDICATED VALUES BEFORE LOCATING UPPER TRANSMISSION MOUNTS ON CHASSIS SIDE PLATES.

Item	Part No.	Qty	Description	Item	Part No.	Qty	Description
580574 Transmission Installation							
1	* 581013	1	. Transmission	11	232024	6	. Nut, Esna
2	573697	1	. Cradle, Trans	12	224222	2	. Vibration Dampener
3	239953	2	. Capscrew	13	574280	1	. Angle
4	222887	4	. Flat Washer	14	557376	6	. Flat Washer
5	220918	2	. Nut, Esna	15	573587	1	. Plate, Trans Mt
6	223188	2	. Nut, Esna	16	573589	1	. Plate, Trans Mt
8	230096	2	. Capscrew	17	221259	8	. Mach Bush
9	00106268	2	. Flat Washer				* See Separate Coverage
10	224157	6	. Capscrew				