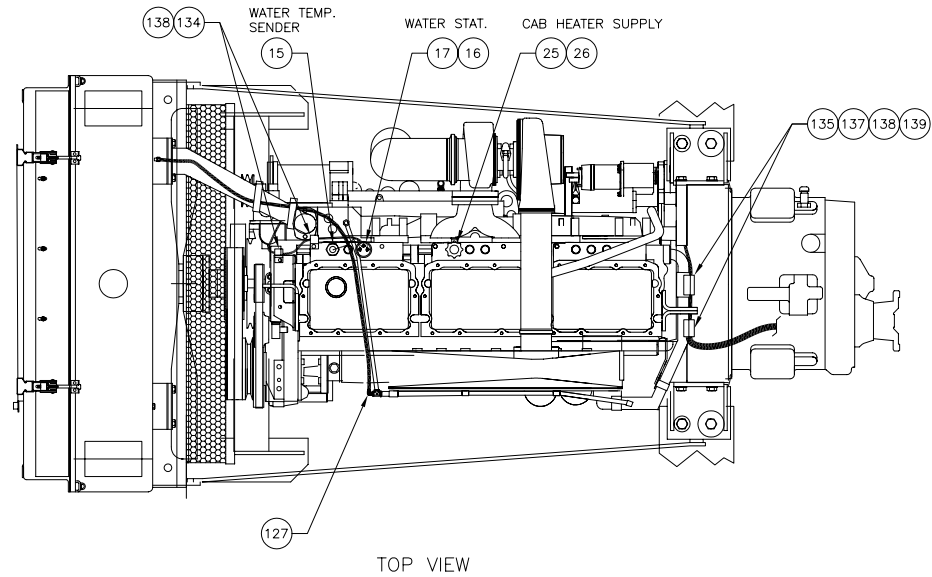


Power Unit

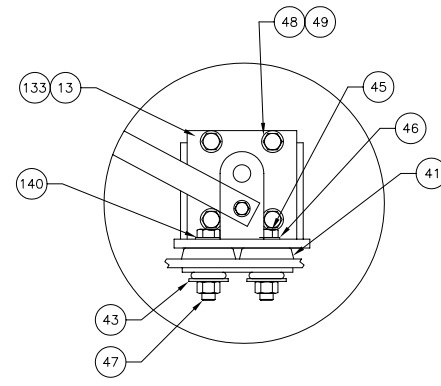
Power Unit

Item	Part No.	Qty	Description	Item	Part No.	Qty	Description
	580573		Power Unit				
1	* 241729	1	. Engine Specifications	81	223427	6	. Flat Washer
2	* 239794	1	. Converter	82	224131	6	. Nut, Esna
3	* 575501	1	. Radiator	88	224653	1	. Spring, Ext
4	* 573968	1	. Cooler, Oil (Trans. & Hydraulic)	89	226959	1	. Kit, Cable Clamp
8	* 247015	1	. Piggyback Pump	90	560328	1	. Bracket
9	* 245617	1	. Hydraulic Pump	91	00103374	2	. Cotter Pin
10	* 239790	1	. Pump, Brake/Pilot	92	224209	5	. Nut, Esna
	245973	1	. . Seal Kit	93	570775	1	. Ring Gear Assembly
12	581016	1	. Rail, Eng		237315	96	. . Washer, Bellville
13	575424	2	. Engine Mt, RH		237316	24	. . Nut
15	242462	1	. Sender, Water Temp		570735	1	. . Ring Gear
16	233406	1	. Alarmstat		570776	24	. . Stud
17	00144046	1	. Bushing, Reducer	95	16229	2	. Fitting
18	242461	1	. Oil Press Sender	96	217657	2	. Fitting, Ff
19	225565	1	. Pressure Stat	97	223794	1	. Fitting
20	229944	2	. Fitting	98	221186	1	. Fitting
21	575477	1	. Bracket	99	203519	1	. O-Ring
25	203274	2	. Shutoff Valve	100	230596	2	. Capscrew
26	209505	2	. Fitting	101	223909	12	. Lockwasher
29	242147	2	. Latch, Draw	102	505499	2	. Gasket
30	234177	8	. Capscrew	103	539968	2	. Sleeve, Pump
31	00103339	13	. Flat Washer	104	23390	2	. Kit, Split Flange
32	00103325	4	. Lockwasher		200604	4	. . Lockwasher
33	229932	4	. Capscrew		201621	4	. . Capscrew
34	516284	2	. Pad		203523	1	. . O-Ring
35	222615	8	. Flat Washer		209539	2	. . Clamp Half
36	00186689	4	. Capscrew	105	211693	2	. Fitting, Ff
37	562447	2	. Clamp, Block	106	573516	1	. Fitting
38	200325	2	. Stop, Door	107	11740	2	. Kit, Split Flange
39	223587	4	. Nut, Esna		201615	4	. . Capscrew
40	574375	3	. Spring Assembly		203446	1	. . O-Ring
41	224222	4	. Vibration Dampener		209536	2	. . Clamp Half
42	234497	2	. Vibration Dampener	108	00190724	1	. Nipple, Pipe
43	557376	6	. Flat Washer	109	224780	2	. Fitting
45	230096	6	. Capscrew	110	221140	2	. Fitting
46	00106268	6	. Flat Washer	111	229639	2	. Fitting
47	223188	8	. Nut, Esna	112	209714	2	. Fitting
48	223692	8	. Capscrew	113	209490	1	. Fitting
49	223694	8	. Lockwasher	114	215384	1	. Fitting
50	574130	2	. Angle	115	209166	1	. Fitting
51	223086	4	. Capscrew	116	209805	1	. Fitting
52	230095	2	. Capscrew	117	209083	1	. Fitting
53	221849	1	. Fitting	118	11767	1	. Kit, Split Flange
55	* 234183	1	. Alternator		200604	4	. . Lockwasher
57	206320	3'	. Hose, Bulk		209537	2	. . Clamp Half
58	202947	2	. Hose Clamp		222379	4	. . Capscrew
59	201635	14	. Capscrew	119	14274	1	. Fitting
60	200604	4	. Lockwasher	122	210769	1	. Fitting
61	506669	2	. Gasket	123	506670	1	. Flange
62	523605	1	. Connector Assembly, Rad Top	125	209304	1	. Fitting
63	242463	1	. Sender, Oil Temp	126	242154	1	. Hose Assembly
64	228784	1	. Sensor, Magnetic Speed	127	210224	1	. Fitting
65	574417	2	. Bar	133	575484	1	. Engine Mt
66	574414	2	. Shroud, Rubber	134	209578	5	. Clamp
67	574413	1	. Bar	135	209695	3	. Clamp
68	574387	1	. Guard, Rubber	136	209589	5	. Clamp
69	575486	1	. Engine Harness, 24V	137	209699	2	. Clamp
70	209512	1	. Fitting	138	R13803889	13	. Capscrew
71	209921	1	. Fitting	139	237316	2	. Nut, Esna
72	211791	3'	. Hose, Radiator	140	00103346	2	. Flat Washer
73	225369	4	. T-Bolt Clamp	141	575539	2	. Platekeeper
74	223872	6	. Tie Strap	142	577373	1	. Dipstick Hsg
75	203056	2	. Draincock	143	574359	1	. Dipstick Assembly
76	575439	1	. Tube, Rad	144	209507	1	. Fitting
77	211807	1'	. Hose, Radiator	145	209757	1	. Fitting
78	207146	2	. T-Bolt Clamp				
79	219460	2'	. Hose, Radiator				
80	225370	2	. T-Bolt Clamp				

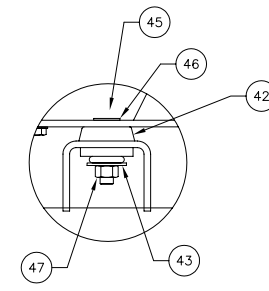
* See Separate Coverage



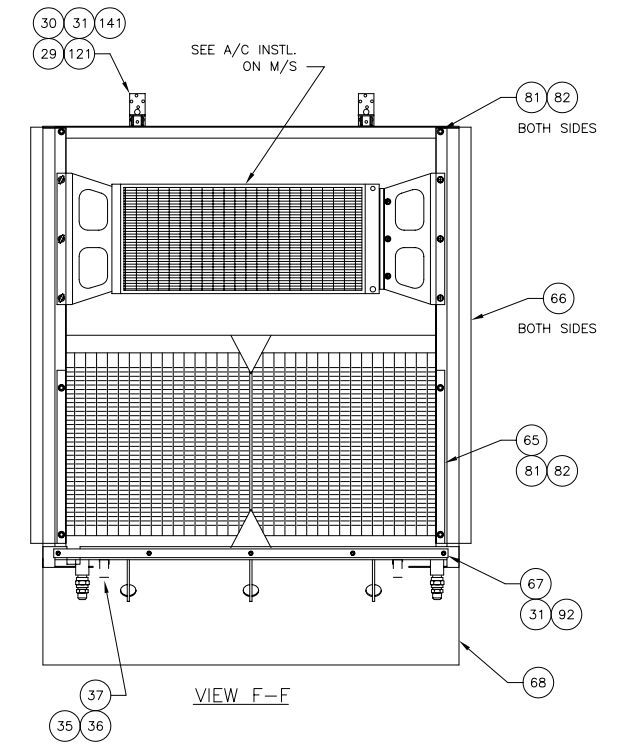
TOP VIEW



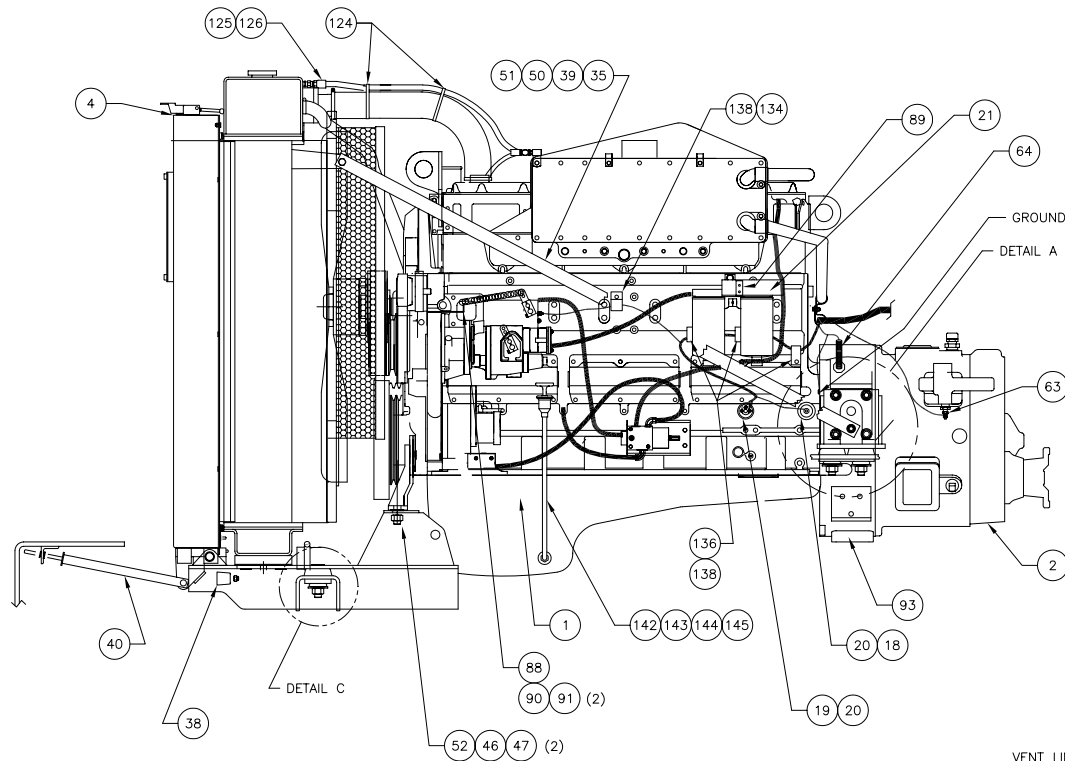
DETAIL A
TYP (2) PLCS



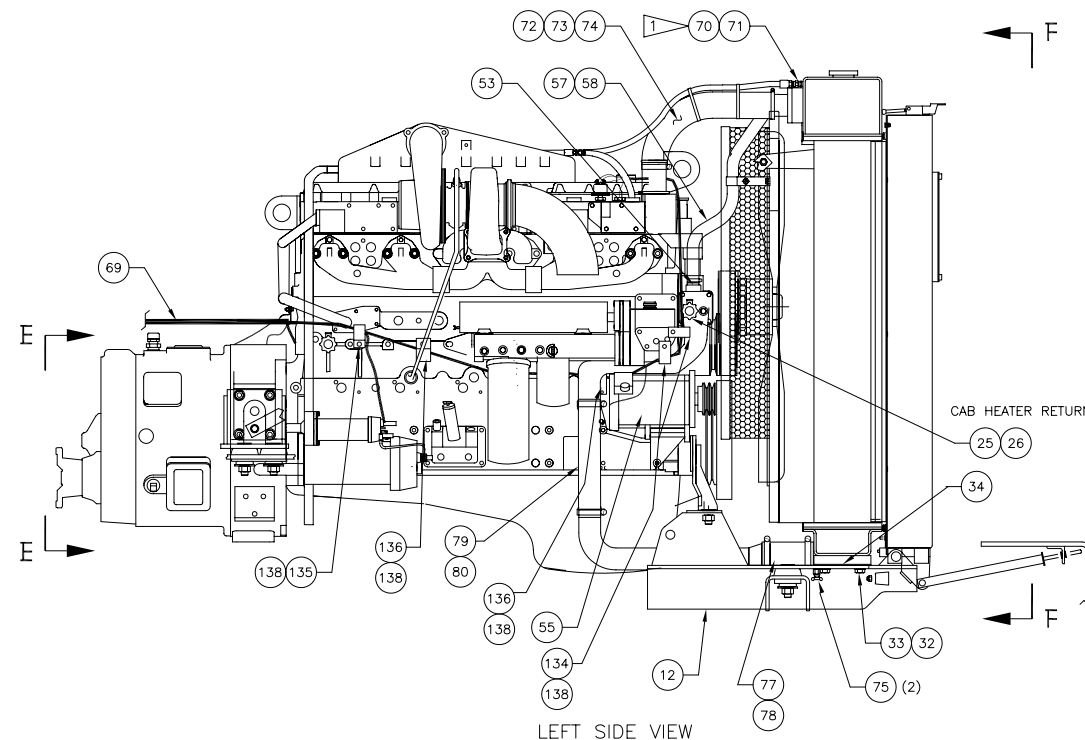
DETAIL C
TYP (2) PLCS



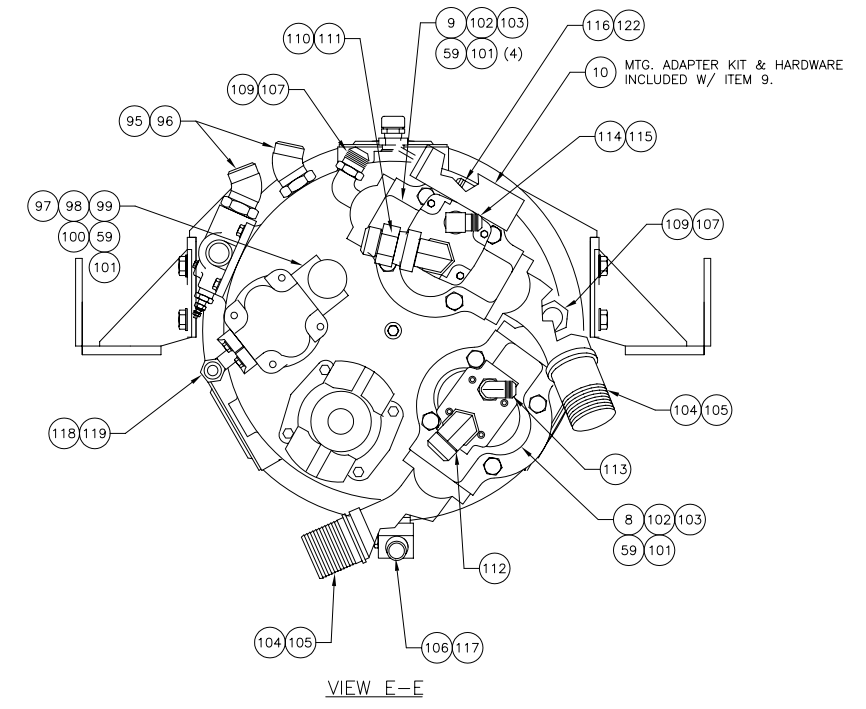
VIEW F-F



RIGHT SIDE VIEW

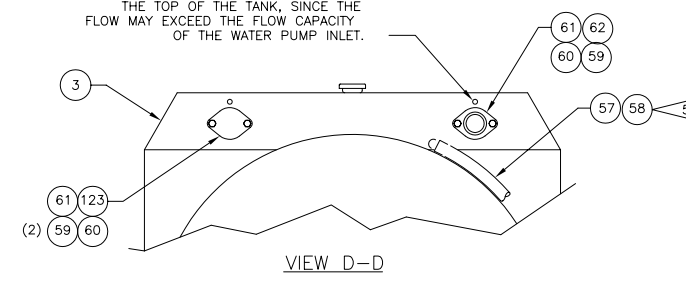


LEFT SIDE VIEW



VIEW E-E

VENT LINES TO BE LOCATED ABOVE WATER PLUMB INLET.
CAUTION: NO LINES OTHER THAN THE VENT LINE ARE TO BE PLUMBED TO THE TOP OF THE TANK, SINCE THE FLOW MAY EXCEED THE FLOW CAPACITY OF THE WATER PUMP INLET.



VIEW D-D

NOTES:

- 1 MAKE (2) HOSES 42" LG. EACH.
- 2 SEE ITEM 93 FOR RING GEAR PARTS AND INSTALLATION
- 4 SEAL ALL OPEN PORTS WITH PLASTIC PLUGS, CAPS, OR TAPE.
- 5 DO NOT TEE ANY OTHER LINE WITH THIS LINE AT WATER PUMP OR FLOW WILL BE ADVERSLY AFFECTED.