

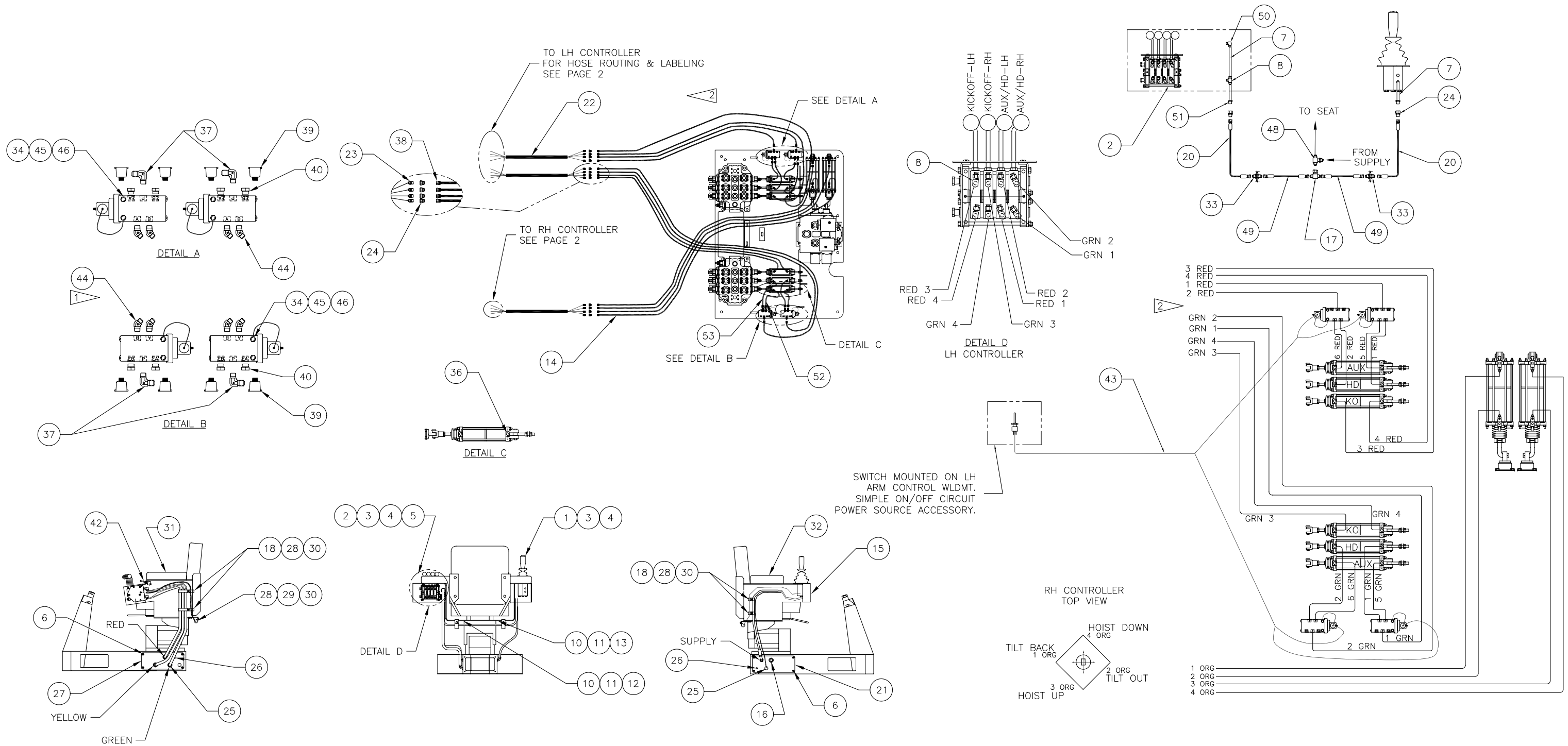
---

Air System - Implement Controls

## Air System - Implement Controls

Item	Part No.	Qty	Description	Item	Part No.	Qty	Description
	<b>580538</b>		<b>Air Syst - Implement Controls</b>				
1	* 227916	1	. Remote Control Valve	29	00103339	2	. Flat Washer
2	* 581012	1	. Air Valve Assembly	30	209588	6	. Clamp
3	00137352	8	. Capscrew	31	570705	1	. Armrest, LH
4	224189	8	. Nut, Esna	32	570534	1	. Armrest, RH
5	580803	1	. Plate, Cover	33	219502	2	. Fitting
6	234757	8	. Capscrew	34	248013	4	. Valve
7	215123	5'	. Hose, Plastic	36	209317	12	. Fitting
8	250041	1	. Fitting	37	209394	4	. Fitting
10	223654	2	. Nut, Esna	38	244839	36	. Fitting
11	201634	2	. Capscrew	39	210299	8	. Air Cleaner
12	570820	1	. Washer	40	12930015	8	. Fitting
13	570819	1	. Washer	42	230771	1	. Toggle Switch
14	209842	56'	. Hose, Push-On	43	220274	14'	. Cord, SO
15	576346	1	. Control	44	212194	8	. Fitting, Ff
16	220577	1	. Connector, Cord	45	R13801783	8	. Capscrew
17	13136	1	. Fitting	46	R13812512	8	. Lockwasher
18	209698	4	. Clamp	47	579752	1	. Decal
20	210234	2	. Hose Assembly	48	15374	1	. Fitting
21	568743	1	. Plate	49	212852	2	. Hose Assembly
22	218879	30'	. Tube, Poly	50	215512	1	. Fitting
23	215151	12	. Fitting	51	215235	2	. Fitting
24	209910	12	. Fitting	52	219220	4	. Hose Assembly
25	208264	4	. Grommet	53	207854	4	. Hose Assembly
26	200363	3	. Button Plate				
27	572379	1	. Plate				
28	222259	7	. Capscrew				

\* See Separate Coverage



1 INSTALL PIPE PLUGS HAND TIGHT TO ACCOMODATE SWITCHING OF LINE POSITIONS. THEY MUST BE TIGHTENED BEFORE THE VALVE IS OPERATED.

2 MARK INDIVIDUAL HOSES WITH THE COLOR AND NUMBER AS SHOWN WITH CABLE TIES. MARK EACH LOOM (ITEM 22) WITH COLOR TAPE.