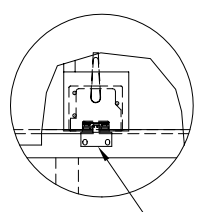
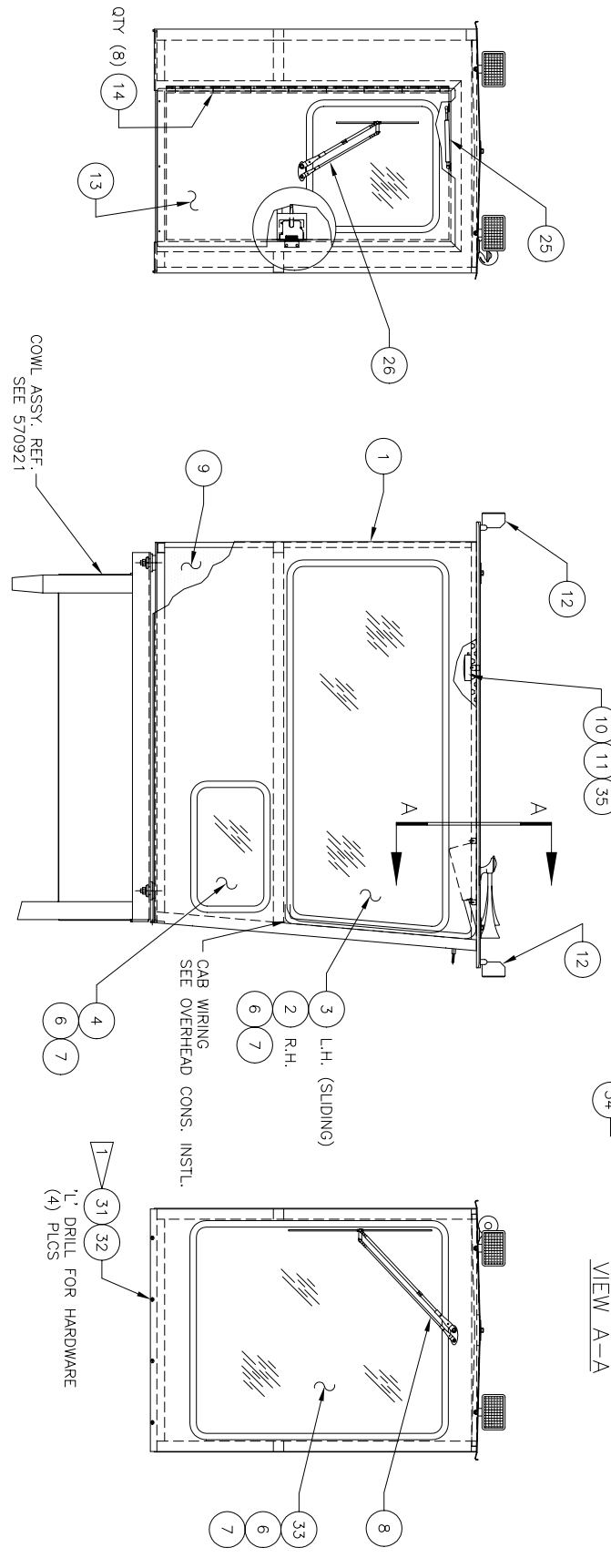
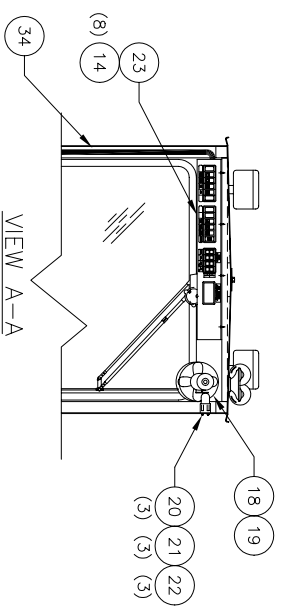
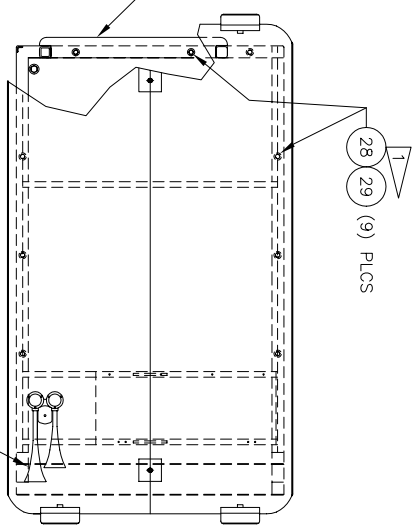

Cab Assembly

- 1 APPLY SILICONE SEALER TO COWL PRIOR TO INSTALLING CAB.
- 2 INSTALL AFTER FLOOR MAT IS IN PLACE. SEE M/S FOR WARNING LIGHT OPTIONS.



QTY (3) 14
QTY (2) 15
DRILL 25/64 FOR HARDWARE



COWL ASSY. REF. SEE 570921

CAB WIRING SEE OVERHEAD CONS. INSTL.

1/4\"/>

Cab Assembly

Item	Part No.	Qty	Description	Item	Part No.	Qty	Description
	580361		Cab Assembly				
1	570758	1	. Cab	21	00103338	3	. Washer
2	570852	1	. Glass	22	00190637	3	. Nut
3	570853	1	. Window, Sliding	23	* 580362	1	. Panel Assembly, Cab
4	571258	1	. Glass	24	569146	1	. Plate threshold
5	W2776	1	. Horn List	25	571456	1	. Gas Spring Installation
6	203037	55'	. Molding, Locking Key	26	* 580515	1	. Wiper Assembly, Rear
7	200326	55'	. Molding, Self Lock	28	201635	9	. Capscrew
8	* 580514	1	. Wiper Assembly, Fnt	29	570391	9	. Washer
9	571230	1	. Cab Insulation Installation	30	224202	9	. Nut
11	223154	2	. Screw, Sht Metal	31	234261	4	. Capscrew
12	R13659	4	. Light, Work	32	223428	4	. Washer
13	571673	1	. Door Assembly, Rear	33	570851	1	. Glass
14	09420904	15	. Capscrew	34	568622	3'	. Duct
15	571336	1	. Latch Striker Assembly	35	219435	9'	. Wire
16	222470	2	. Insert				
19	571626	1	. Wire Harness				
20	00109451	3	. Machine Screw				
							* See Seperate Coverage