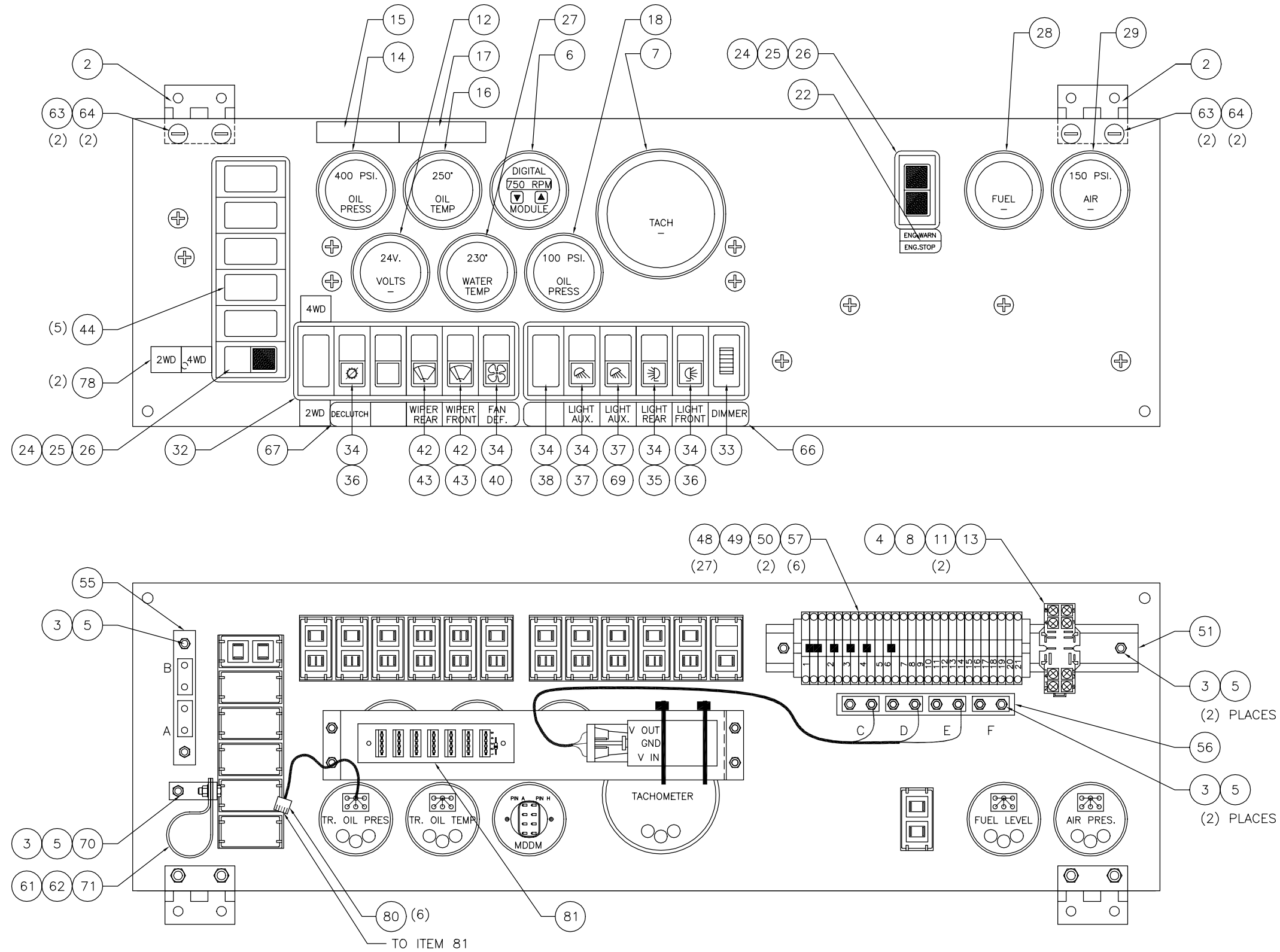


---

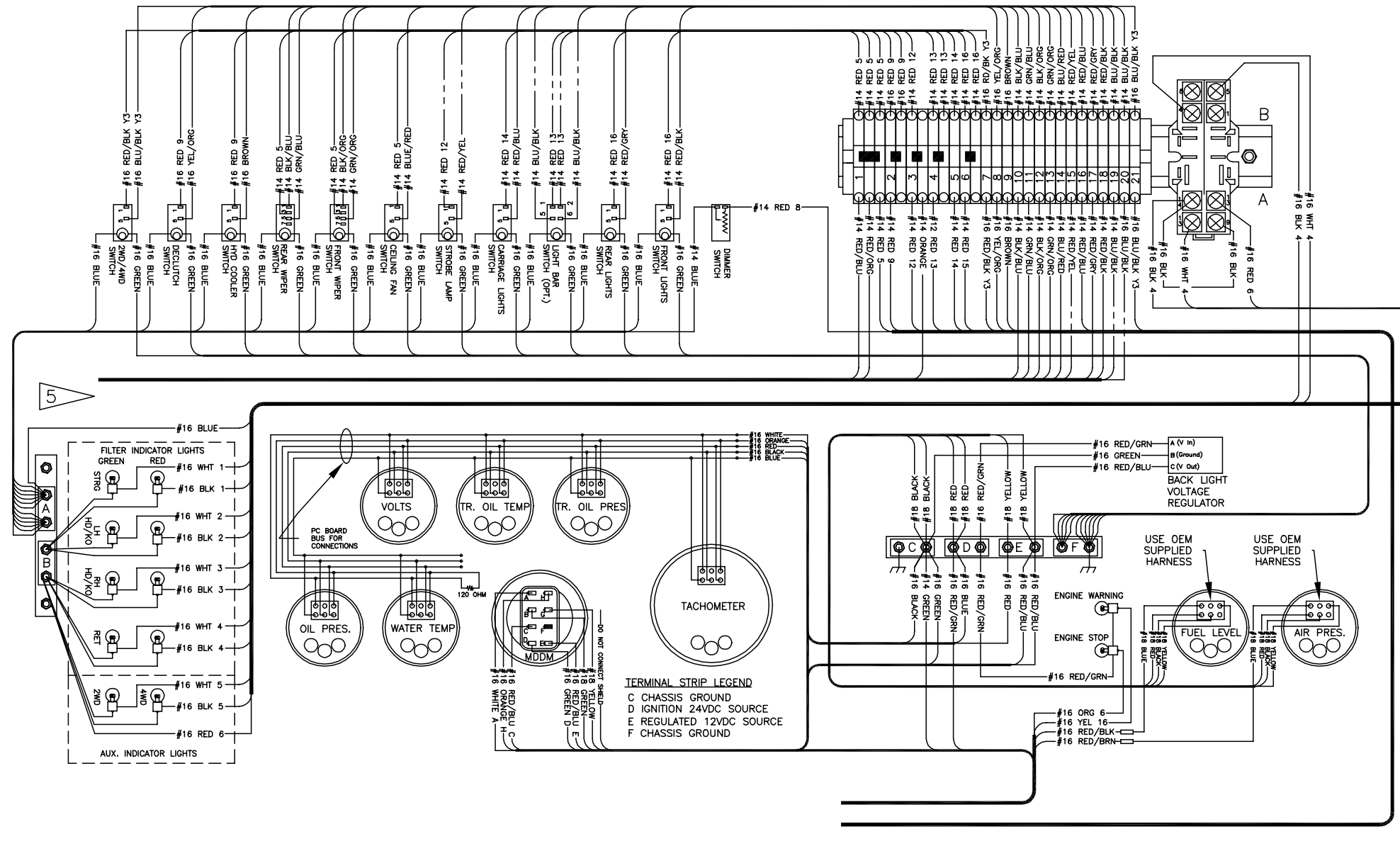
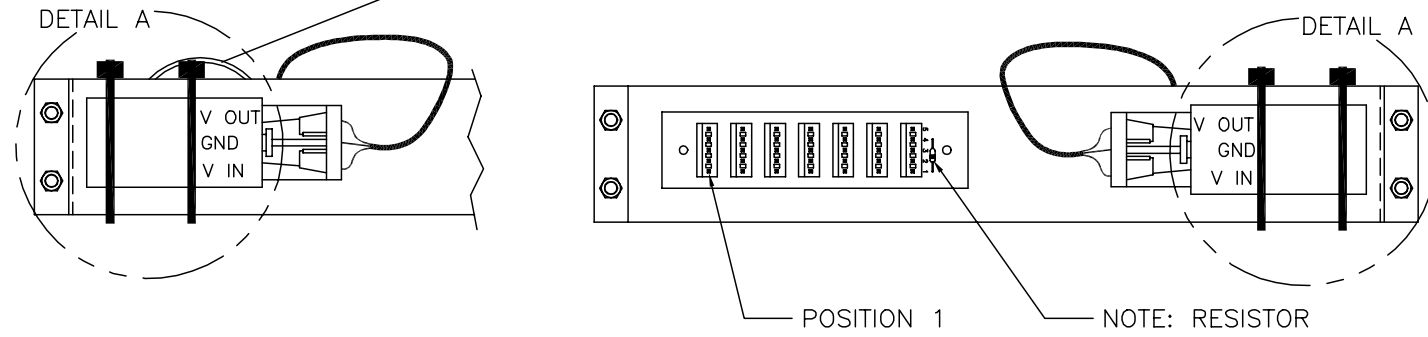
Instrument Panel Assembly

## Instrument Panel Assembly

Item	Part No.	Qty	Description	Item	Part No.	Qty	Description
	580323		Instrument Panel Assembly				
1	580326	1	. Panel Plate	43	236121	2	. Symbol, Wiper
2	568241	2	. Hinge	44	234509	6	. Cover, Blank
3	234495	11	. Capscrew	45	575679	1	. Wire Harness
4	28287	1	. Relay	46	575677	1	. Wire Harness
5	224191	11	. Nut	47	R10547	1	. Buzzer
6	246934	1	. Gauge, Mddm Unit	48	236924	27	. Terminal Block
7	246944	1	. Tachometer	49	236925	1	. End Plate
8	27637	1	. Relay Socket	50	241761	2	. End Stop
9	561919	1	. Decal	51	22628	1MT	. Rail, Din
10	579353	1	. Decal	52	575672	1	. Wire Harness
11	235842	2	. Clamp, Holddown	53	221964	3	. Terminal
12	246936	1	. Voltmeter Gauge	54	209695	1	. Clamp
13	232157	1	. Spring, Holddown	55	229881	1	. Terminal Block
14	246939	1	. Oil Press Gauge	56	229882	1	. Terminal Block
15	569264	1	. Decal	57	236926	6	. Jumper, Horizontal
16	246940	1	. Gauge, Oil Temp	58	570650	1	. Wiring, Misc Inst Panel
17	520687	1	. Decal	59	571676	1	. Decal
18	246937	1	. Oil Press Gauge	60	581075	1	. Decal
19	210744	1	. Button Plate	61	234177	1	. Capscrew
20	570214	1	. Decal	62	235620	1	. Nut
22	580120	1	. Decal	63	235633	4	. Capscrew
23	237346	1	. Lens	64	00190637	4	. Nut, Esna
24	236502	2	. Pilot Lamp	65	570509	1	. Tab
25	236503	1	. Lens, Reducer	66	570277	1	. Decal
26	236504	3	. Lens	67	570276	1	. Decal
27	246938	1	. Gauge, Coolant Temp	68	234846	1	. Symbol, Cooling
28	247294	1	. Gauge, Fuel Level	69	237688	1	. Switch
29	249542	1	. Gauge, Press	70	571729	1	. Bracket
32	236485	3	. Frame	71	209700	1	. Clamp
33	234739	1	. Dimmer Switch	74	572606	1	. Decal
34	234736	8	. Switch	75	704267	2	. Jumper
	234508	1	. . Socket	76	237495	1	. Symbol, Out-Of-Gear
	236901	1	. . Bulb	77	571677	1	. Decal
35	234742	1	. Symbol, Rear Lamp	78	573312	1	. Decal
36	236486	1	. Symbol, Light Front	79	246935	1	. Converter, Voltage
37	234741	2	. Symbol, Lamp	80	578956	6	. Harness, Gauge
38	236507	1	. Lens, Rotary Beacon	81	246943	1	. Board, Pc
40	234507	2	. Symbol, Fan	82	579155	1	. Bracket
42	236489	2	. Switch, Wiper				



CUT A SHORT PIECE OF DIN RAIL  
POSITION AS SHOWN  
SECURE W/ BLACK WIRE TIES



**TERMINAL STRIP LEGEND**  
 C CHASSIS GROUND  
 D IGNITION 24VDC SOURCE  
 E REGULATED 12VDC SOURCE  
 F CHASSIS GROUND

5 FILTER INDICATORS SHOWN IN WIRING FOR REFERENCE; SEE M/S FOR WIRING DIAGRAM AND OPTIONS;