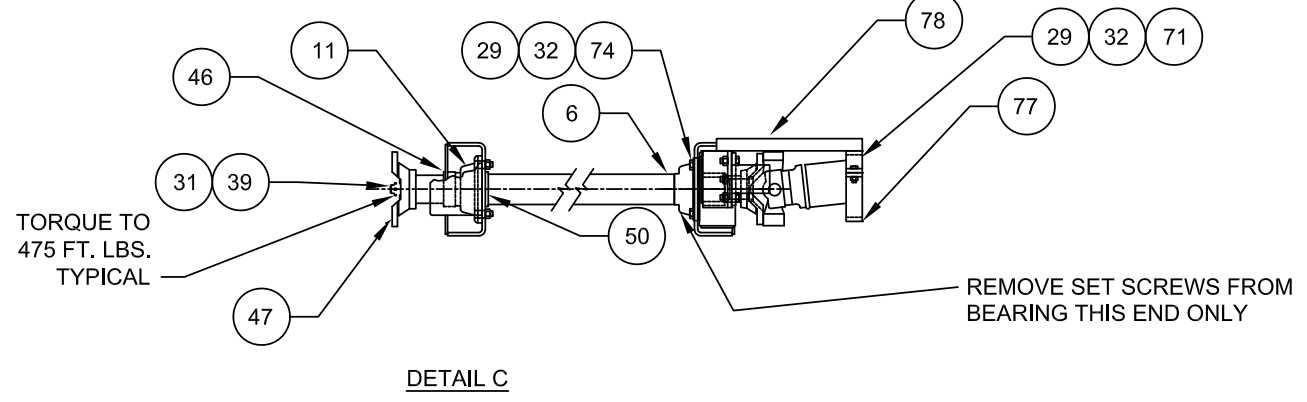
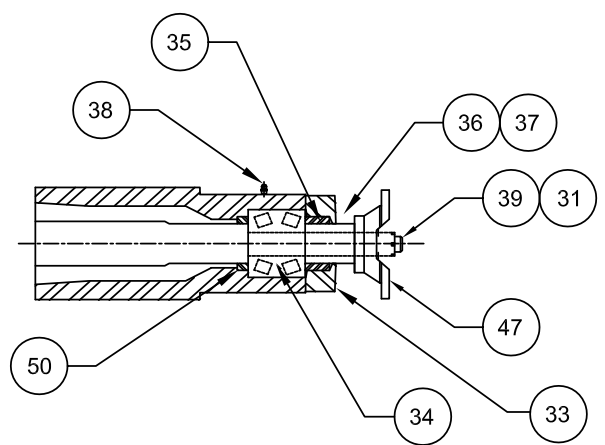
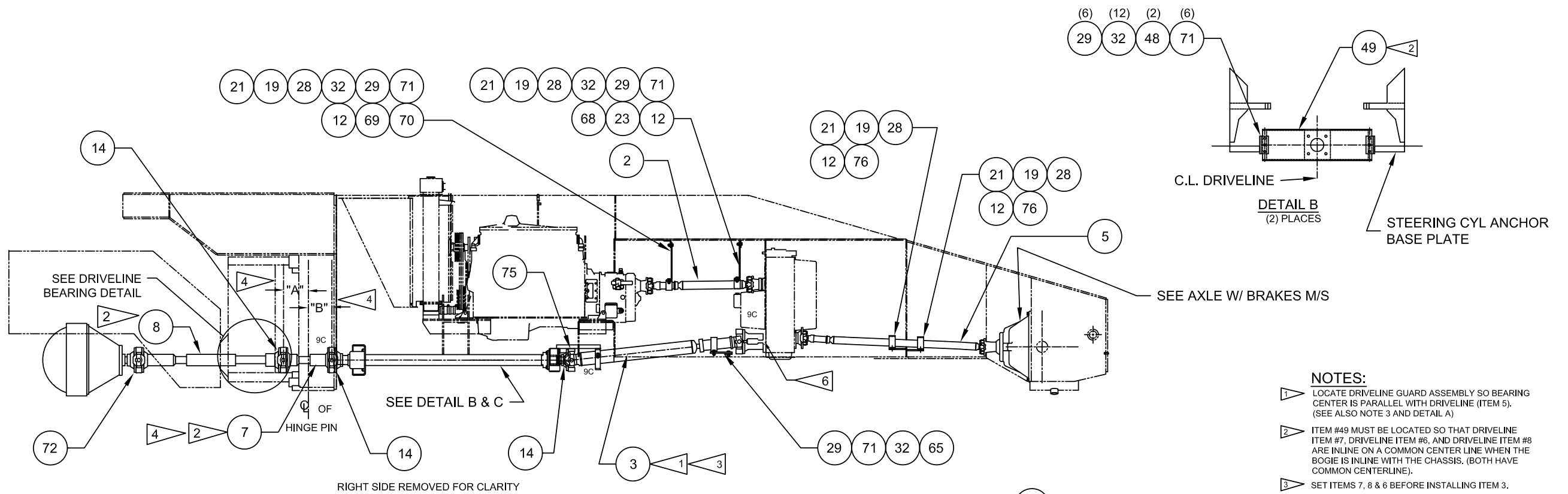
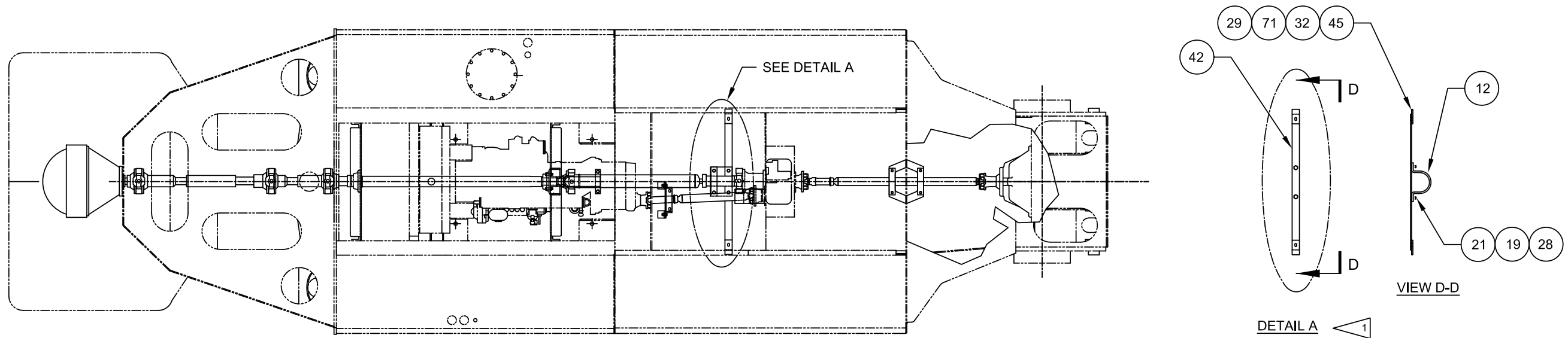

Driveline Installation

Driveline Installation

Item	Part No.	Qty	Description	Item	Part No.	Qty	Description
	580303		Driveline Installation				
2	* 249853	1	. Driveline Assembly	42	567949	1	. Bar,Mounting
3	* 249854	1	. Driveline Assembly	45	563477	2	. Bar
5	* 249020	1	. Driveline Assembly	46	580336	1	. Spacer
6	* 249303	1	. Driveline Assembly	47	545587	3	. Yoke, Splined
7	* 248963	1	. Driveline Assembly	48	563442	4	. Angle
8	* 249667	1	. Driveline Assembly	49	580162	2	. Bracket
11	249405	2	. Bearing, Flange Mount	50	580335	2	. Spacer
12	528830	5	. Shield	51	221499W	8	. Capscrew
14	221577W	12	. Capscrew	52	230282	8	. Flat Washer
19	Y17C-1032	10	. Capscrew	53	223654	8	. Locknut
21	00106267	20	. Flat Washer	65	578653	1	. Plate
23	590903	1	. Plate, Guard	68	590971	1	. Bracket
28	224121	10	. Nut, Esna	69	563451	2	. Angle
29	223188	30	. Locknut	70	590905	1	. Plate, Guard
31	504068	3	. Nut , Slotted	71	18622W	22	. Capscrew
32	00106268	60	. Flat Washer	72	185813W	4	. Capscrew
33	579939	1	. Retainer, Bearing	74	18624W	8	. Capscrew
34	248970	1	. Bearing, Spherical	75	215403	1	. Cross Assembly
35	580334	1	. Spacer	76	579443	2	. Plate, Guard
36	221569W	6	. Capscrew	77	563885	1	. Shield
37	201569	6	. Flat Washer	78	576257	1	. Bracket Weldment
38	11079	1	. Fitting				
39	00103387	3	. Cotter Pin				

* See Separate Coverage



- NOTES:**
- 1 LOCATE DRIVELINE GUARD ASSEMBLY SO BEARING CENTER IS PARALLEL WITH DRIVELINE (ITEM 5). (SEE ALSO NOTE 3 AND DETAIL A)
 - 2 ITEM #49 MUST BE LOCATED SO THAT DRIVELINE ITEM #7, DRIVELINE ITEM #6, AND DRIVELINE ITEM #8 ARE IN LINE ON A COMMON CENTER LINE WHEN THE BOGIE IS IN LINE WITH THE CHASSIS. (BOTH HAVE COMMON CENTERLINE).
 - 3 SET ITEMS 7, 8 & 6 BEFORE INSTALLING ITEM 3.
 - 4 WITH THE BOGIE IN LINE (ON COMMON CENTERLINE) WITH THE CHASSIS, DISTANCE "A" MUST EQUAL DISTANCE "B" WITHIN +/- 1/16.
 - 5 TORQUE ALL 1/2 UNF CPSCR'S IN DRIVETRAIN TO 110-130 FT. LBS.
 - 6 REFER TO THE TRANSMISSION W/DISCONNECT PARTS LIST ON THE UNIT MASTER FOR REAR DRIVE DISCONNECT CONTROLS.