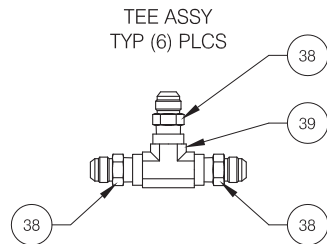
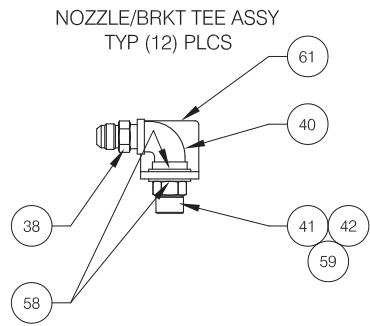
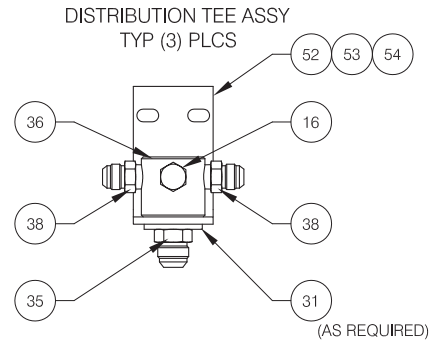

Fire Suppression System

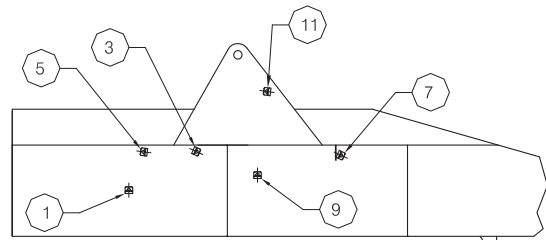
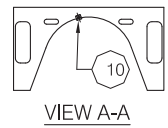
Fire Suppression System

Item	Part No.	Qty	Description	Item	Part No.	Qty	Description
	580258		Fire Suppression System				
1	248751	3	. Tank, Dry Chem W/Bracket	35	209759	3	. Fitting
	221366	1	. . Tank Mounting Bracket	36	224343	3	. Tee, Distribution
	223042	1	. . Tank, Dry Chemical	37	227627	2	. Fitting
3	221961	3	. Cartridge	38	209758	34	. Fitting
4	223041	3	. Bracket, Mounting	39	223168	6	. Fitting
5	225177	1	. Cartridge, Nitrogen	40	236248	12	. Fitting
6	225172	1	. Actuator	41	225143	6	. Nozzle, Fire Ext
	244425	1	. . Reducer Knob	42	225144	6	. Nozzle
7	12930006	3	. Fitting	43	217252	4	. Hose Assembly
8	209920	3	. Fitting	44	225137	4	. Hose Assembly
9	216784	3	. Hose Assembly	47	216786	2	. Hose Assembly
10	212718	3	. Fitting	49	219151	2	. Hose Assembly
11	209921	6	. Fitting	50	209589	8	. Clamp
12	218728	1	. Relief Valve	51	209697	12	. Clamp
13	209394	4	. Fitting	52	223654	36	. Locknut
14	216477	2	. Hose Assembly	53	201570	36	. Washer
15	232980	1	. Hose Assembly	54	560132	3	. Bracket
16	209917	3	. Fitting	55	* 578987	1	. Fire Detection System
17	220596	1	. Fitting	57	223326	3	. Actuator, Pneumatic
18	209436	1	. Fitting	58	225250	24	. Lockwasher
19	221280	2	. Fitting	59	237129	12	. Cap, Blow-Off
21	19368	1	. Fitting	61	218690	5	. Bracket
23	226271	2	. Check Valve	62	559213	1	. Nozzle Location, Cowl
24	216785	1	. Hose Assembly	65	249106	1	. Switch, Batt Disconnect
25	209405	2	. Fitting	66	230456	1	. Fitting
26	216453	2	. Hose Assembly	67	210299	1	. Air Cleaner
27	208264	1	. Grommet	68	583149	1	. Switch, Pressure
28	209578	8	. Clamp	69	541732	1	. Bracket
29	558723	1	. Plate, End	70	218857	1	. Hose Assembly
31	238021	6	. Washer	71	209317	1	. Fitting
32	209417	3	. Fitting	72	209800	2	. Fitting
33	225138	1	. Hose Assembly	73	210119	2	. Fitting
34	225152	1	. Hose Assembly	74	216479	1	. Hose Assembly

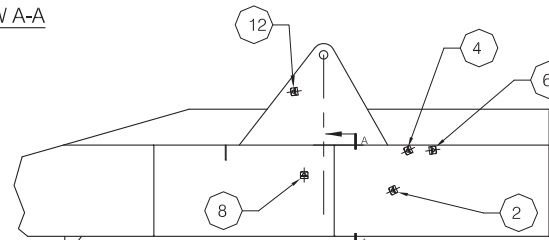
* See Separate Coverage



NOZZLE LOCATIONS



INSIDE CHASSIS, LEFT HAND SIDE



INSIDE CHASSIS, RIGHT HAND SIDE

