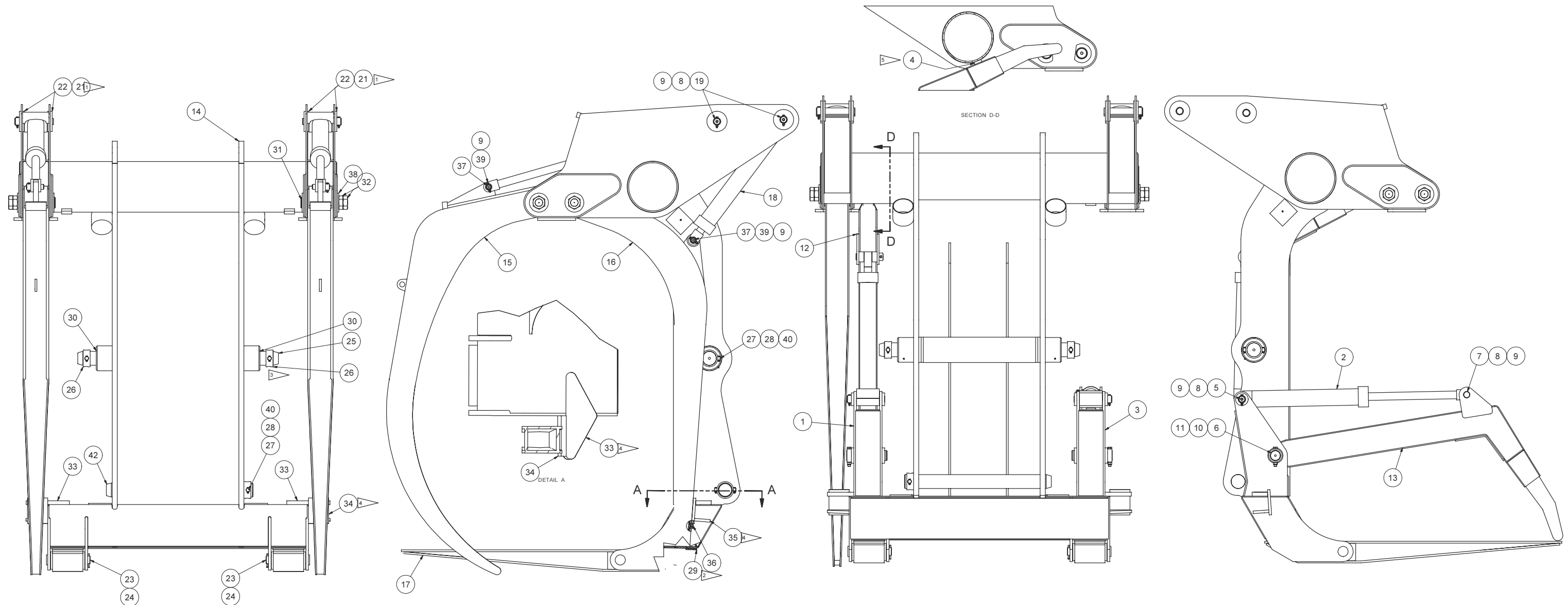

Carriage Assembly

Carriage Assembly

Item	Part No.	Qty	Description	Item	Part No.	Qty	Description
	580235		Carriage Assembly				
1	580288	1	. Anchor Weldment, LH	21	573718	8	. Boss
2	* 524403	2	. Hydraulic Cylinder	22	573813	8	. Boss
3	580289	1	. Anchor Weldment, RH	23	526294	2	. Pin Assembly
4	579225	2	. Plate	24	220275	2	. Cotter Pin
5	505202	2	. Pin	25	562852	1	. Pin,Pivot
6	525424	2	. Pin	26	563243	2	. Lock Collar
7	527477	2	. Pin	27	563280	3	. Pin
8	231625	8	. Capscrew	28	223374	6	. Capscrew
9	224202	12	. Nut, Esna	29	519440	2	. Plate
10	219901	2	. Capscrew	30	561170	2	. Bush
11	09419536	2	. Locknut	31	573783	4	. Pin Assembly
12	580280	1	. Arm Assembly, LH Aux HD	32	219928	8	. Jam Nut
13	580281	1	. Arm Assembly, RH Aux HD	33	528101	2	. Stop
14	574498	1	. Carriage Weldment	34	552393	2	. Plate
15	577522	2	. Holddown Assembly	35	552398	2	. Gusset
	501571	1	. . Bushing	36	563503	2	. Plate, KO Stop
	534117	2	. . Bushing	37	541616	4	. Pin
16	574516	2	. Kickoff Assembly	38	562555	4	. Spacer Plate
	501571	1	. . Bushing	39	230762	4	. Capscrew
	534117	2	. . Bushing	40	223654	6	. Nut, Esna
17	526133	2	. Tine Weldment	41	00191758	2	. Fitting, Lube
18	526164	4	. Cylinder Assembly	42	561517	1	. Pin
19	500418	4	. Pin				
20	508552	4	. Lock Collar				* See Separate Coverage



- 1 USE ITEM 8 & 9 IN ANY ORDER TO OBTAIN 9.13 -0.00 +0.13 WIDTH BETWEEN SIDE PLATES. USE PINS TO KEEP ITEMS 8 & 9 CONCENTRIC.
- 2 ADD SHIMS IF NEEDED TO LEVEL TINES WITH EACH OTHER. WELD SHIM IN BETWEEN ITEM 1 AND ITEM 16.
- 3 WELD TO STABILIZER AFTER INSTALLATION. TYP.
- 4 SET WITH 0.13 EXTENSION ON K.O. CYL.
- 5 SET STOP PAD WITH 0.13 EXTENSION ON AUX HD CYL. SHIM IF NECESSARY.