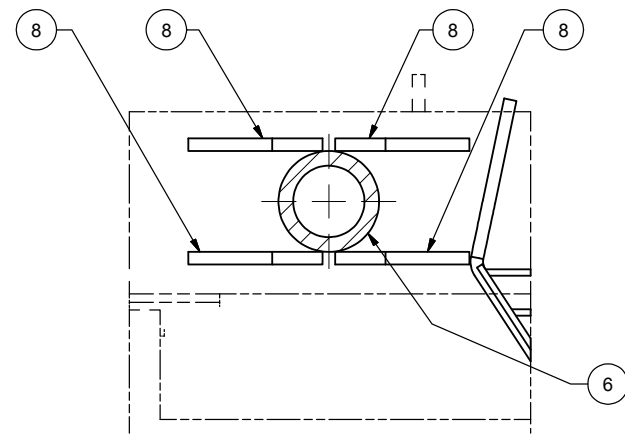

Cowl Assembly

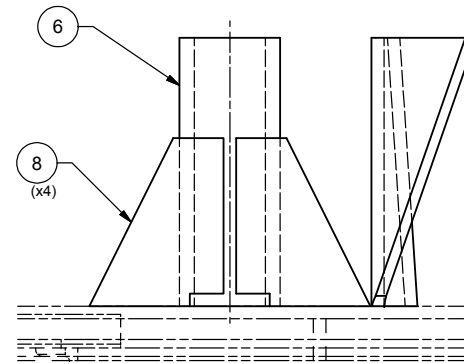
Cowl Assembly

Item	Part No.	Qty	Description	Item	Part No.	Qty	Description
	580222		Cowl Assembly				
1	240158	4	. Capscrew	33	240259	1	. Kit, Seatbelt Hardware
2	521106	8	. Pad	34	215096	1	. Belt, Safety
3	521125	4	. Spacer	35	131137W	4	. Capscrew
4	224121	8	. Nut, Esna	36	R13811432	8	. Hard Washer
5	221642W	4	. Capscrew	37	224119	4	. Nut, Esna
6	533716	4	. Pipe, Support	38	570639	1	. Plate, Mounting
8	562366	16	. Gusset	39	Y25G-0512	2	. Capscrew
9	* 577625	1	. Steering Column	40	563886	2	. Guard
10	* 577270	1	. Dash Panel Assembly	41	232182	1	. Knob, Spinner
11	580598	1	. Electric Shift Controller	42	R13806980	24	. Flat Washer
12	578489	1	. Plate	43	570391	16	. Washer
13	200301	4'	. Molding	44	237567	22	. Nut, Esna
14	580223	1	. Floor, Cowl	45	162572W	2	. Capscrew
15	235620	4	. Nut, Esna	46	540528	2	. Step Assembly
16	* 577614	1	. Junction Box Assembly	47	560858	4	. Bar, Spacer
17	* 580225	1	. Instrument Panel Assembly	48	574056	4	. Plate
18	Y09G-0408	8	. Capscrew	49	571495	4	. Bolt, Step
19	576834	1	. Superstructure	50	242377	4	. Capscrew
20	580226	1	. Cowl	51	R13808536	2	. Capscrew
21	159812W	2	. Capscrew	52	577424	1	. Spacer
22	578008	1	. Plate, Pedal Mounting	53	Y25G-0406	4	. Capscrew
23	244506	1	. Steering Wheel	54	Y25G-0408	17	. Capscrew
24	580583	1	. Bracket	55	Y09G-0420	4	. Capscrew
25	230496	1	. Cap, Horn	56	R13810856	2	. Capscrew
26	* 586069	1	. Terminal Panel Assembly	57	R13810858	2	. Capscrew
27	Y17C-0624	2	. Capscrew	58	221314	12	. Stud, Weld
28	* 586071	1	. Floor Mat Installation	59	200454W	11	. Capscrew
29	R13802914	2	. Hard Washer	60	201569	3	. Flat Washer
30	* 236982	1	. Seat W/O Arms	61	223587	7	. Nut, Esna
31	* 231800	1	. Seat Suspension	62	* 243342	1	. Pedal, Electronic Throttle
32	Y25G-0828	4	. Capscrew				

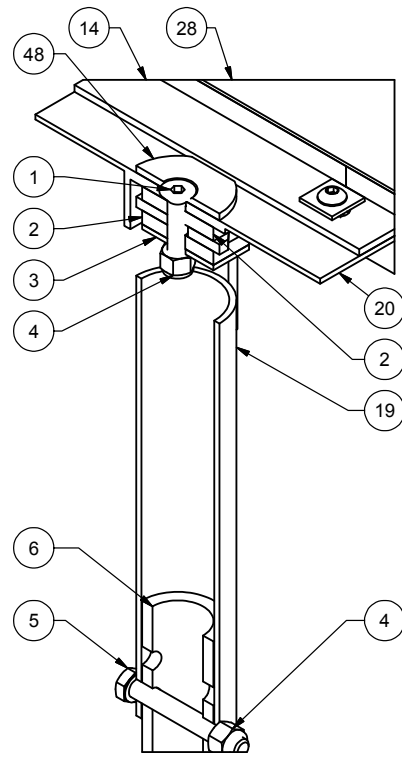
* See Separate Coverage



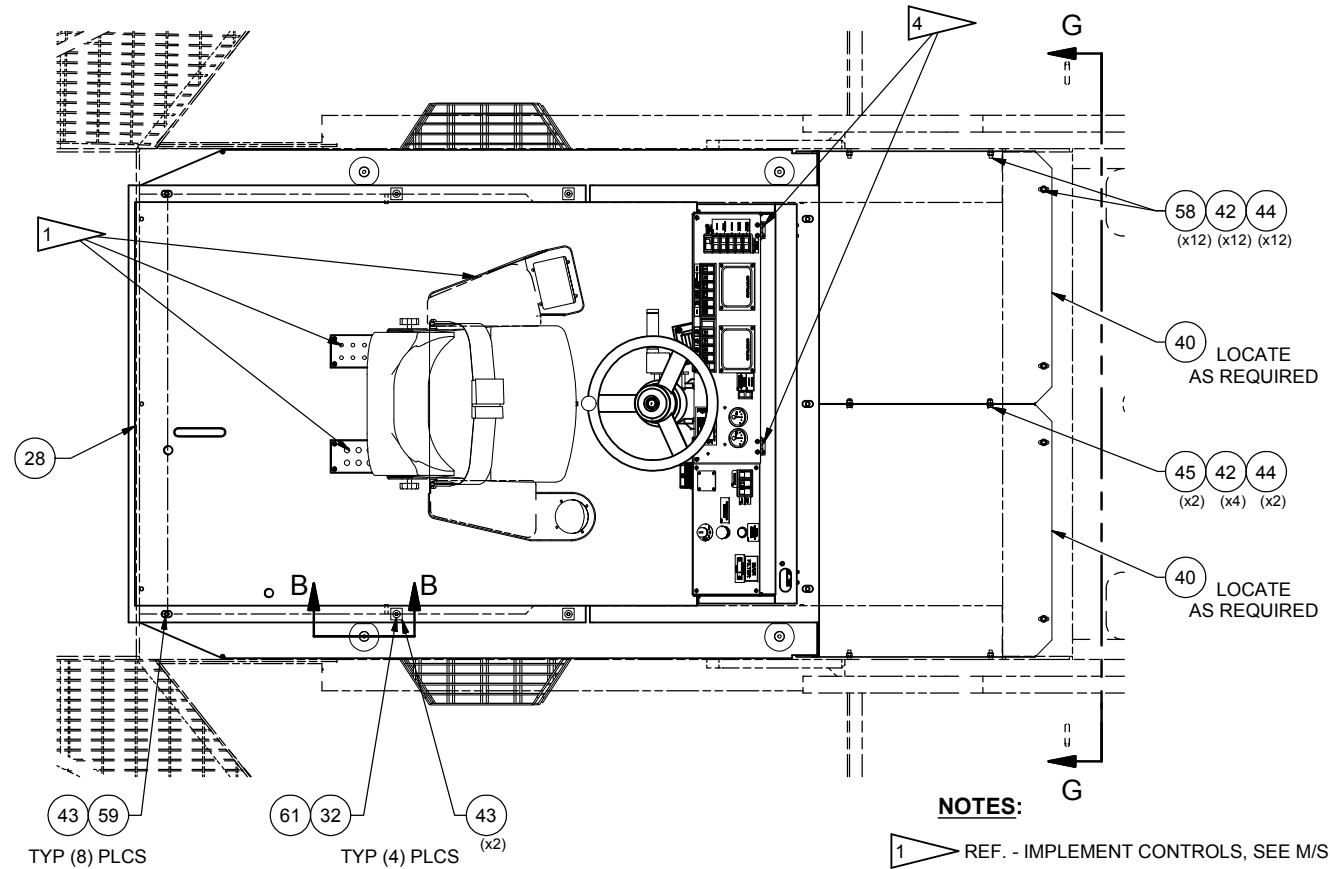
SECTION A-A



PROJECTED VIEW OF SECTION A-A

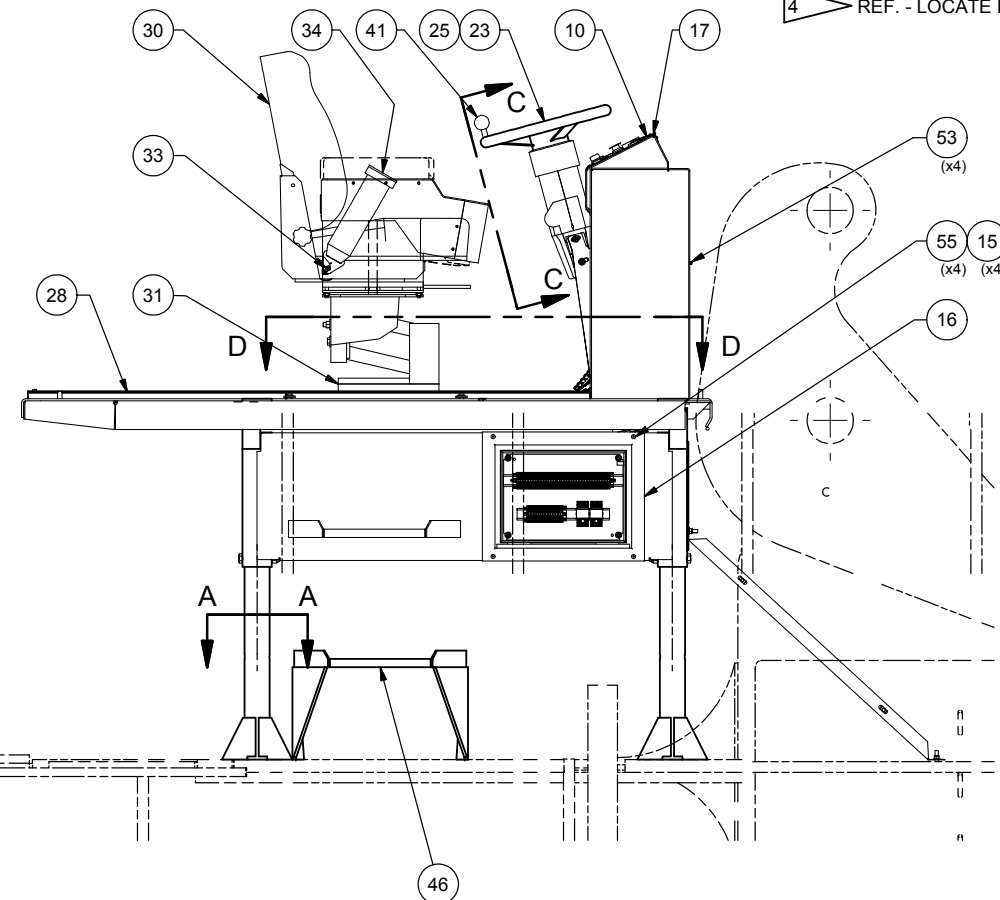
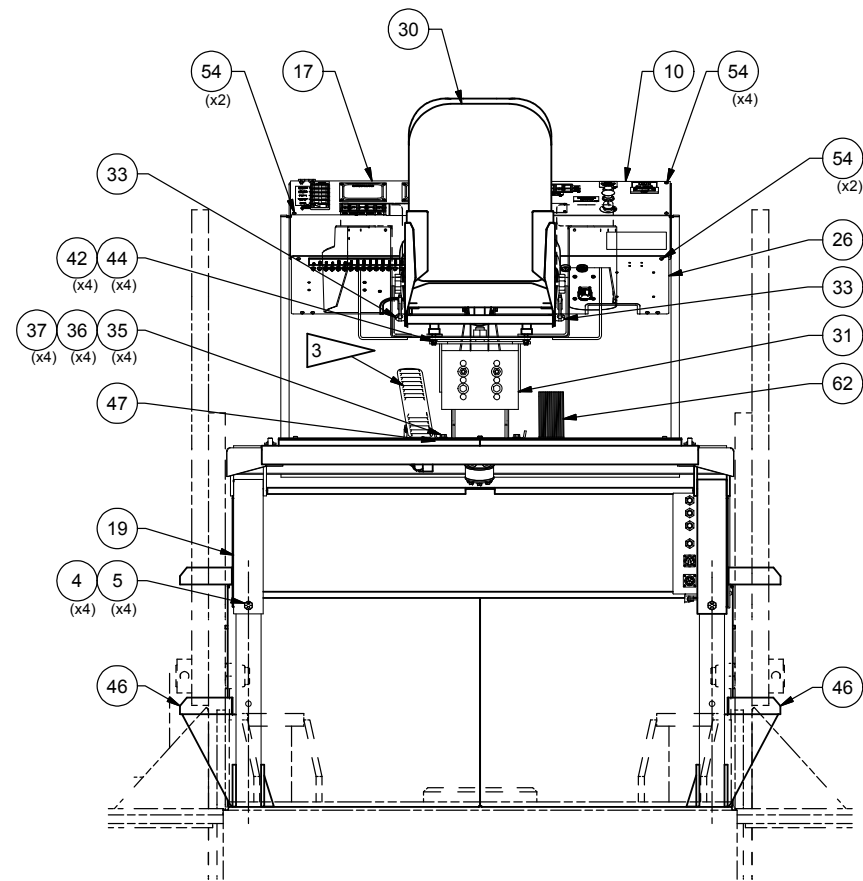


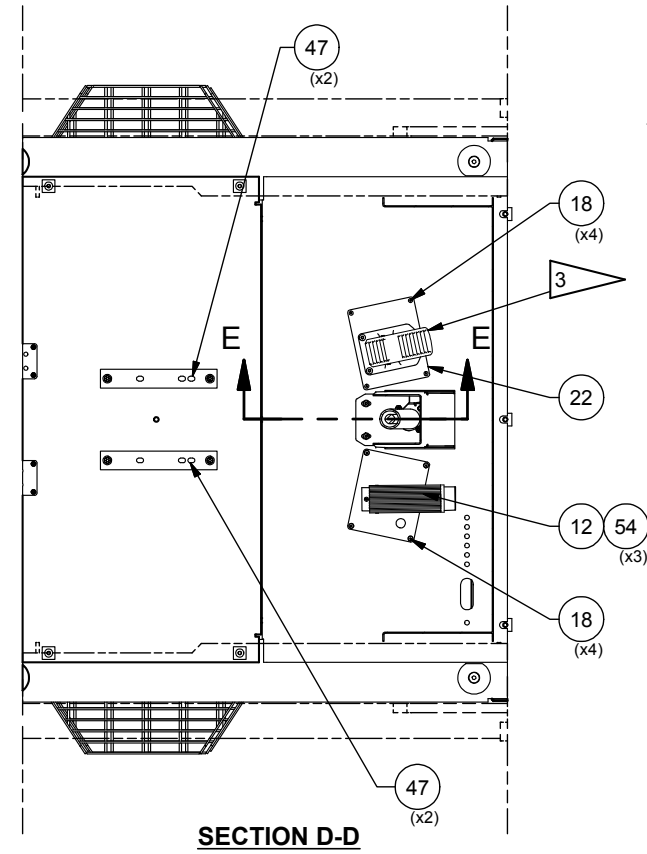
SECTION B-B
TYP (4) PLCS



NOTES:

- 1 REF. - IMPLEMENT CONTROLS, SEE M/S.
- 2 REF. - HYDRAULIC STEERING SYSTEM, SEE M/S.
- 3 REF. - HYDRAULIC BRAKE SYSTEM, SEE M/S.
- 4 REF. - LOCATE PANEL, DRILL, & TAP FOR 1/4-20UNC HDWE.





NOTE:
FLOORMAT NOT SHOWN
FOR DRAWING VIEW CLARITY.

