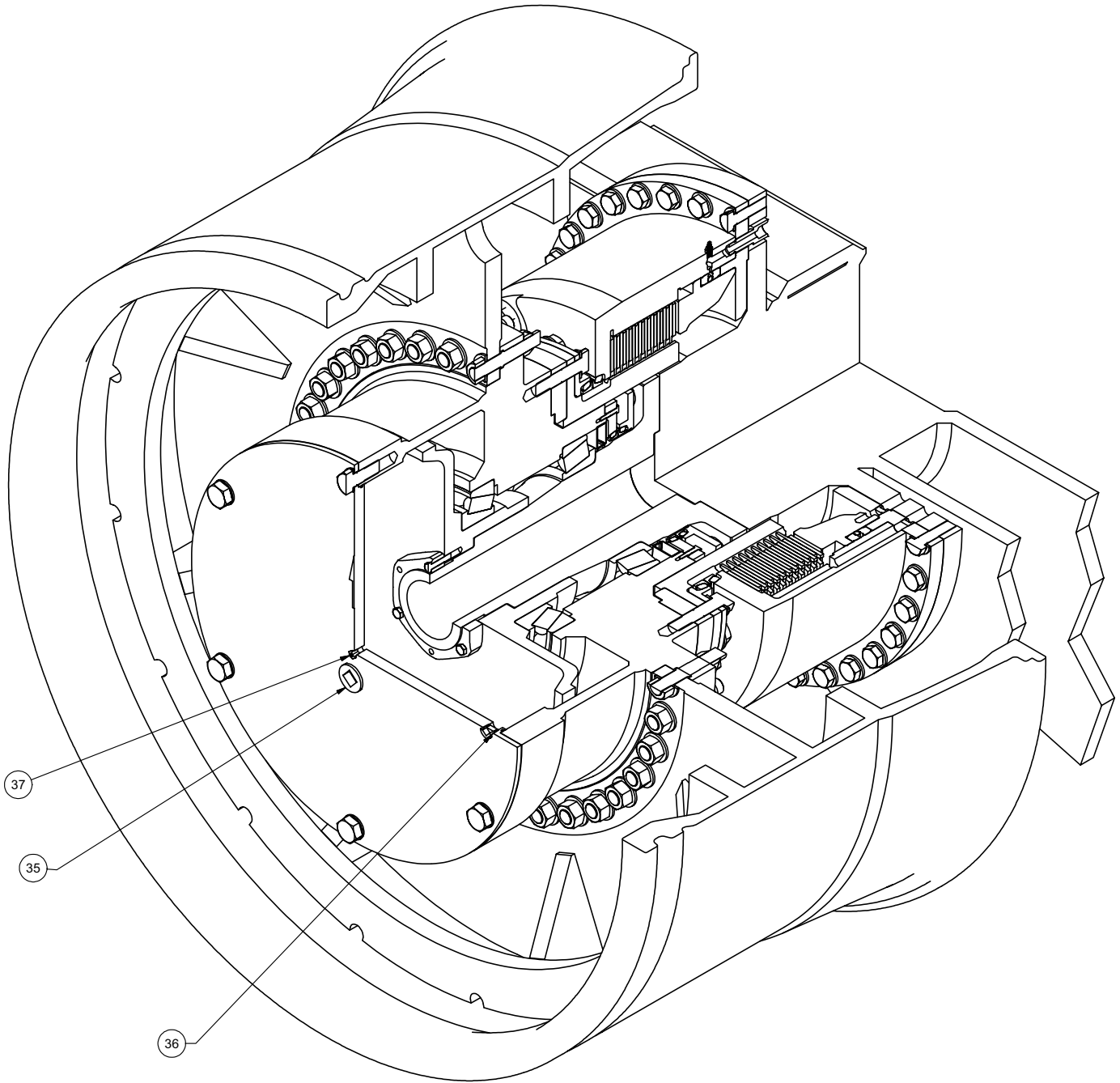


---

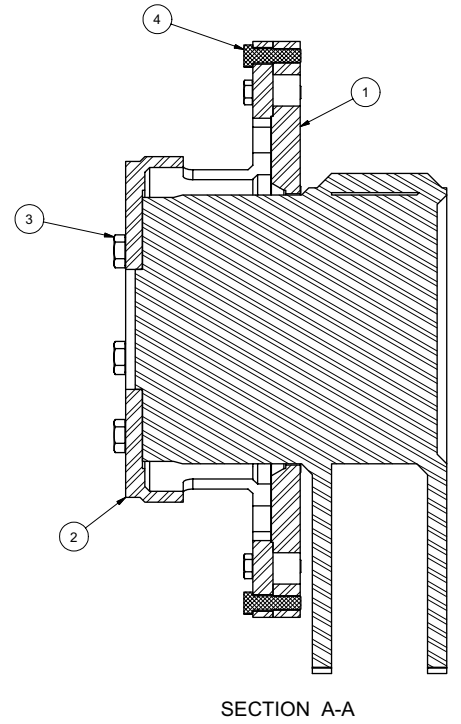
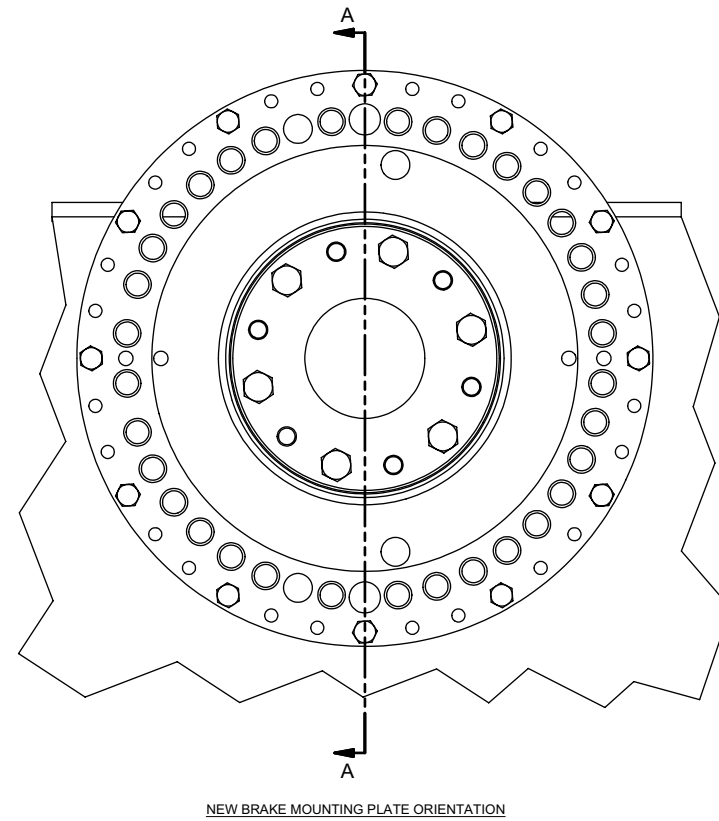
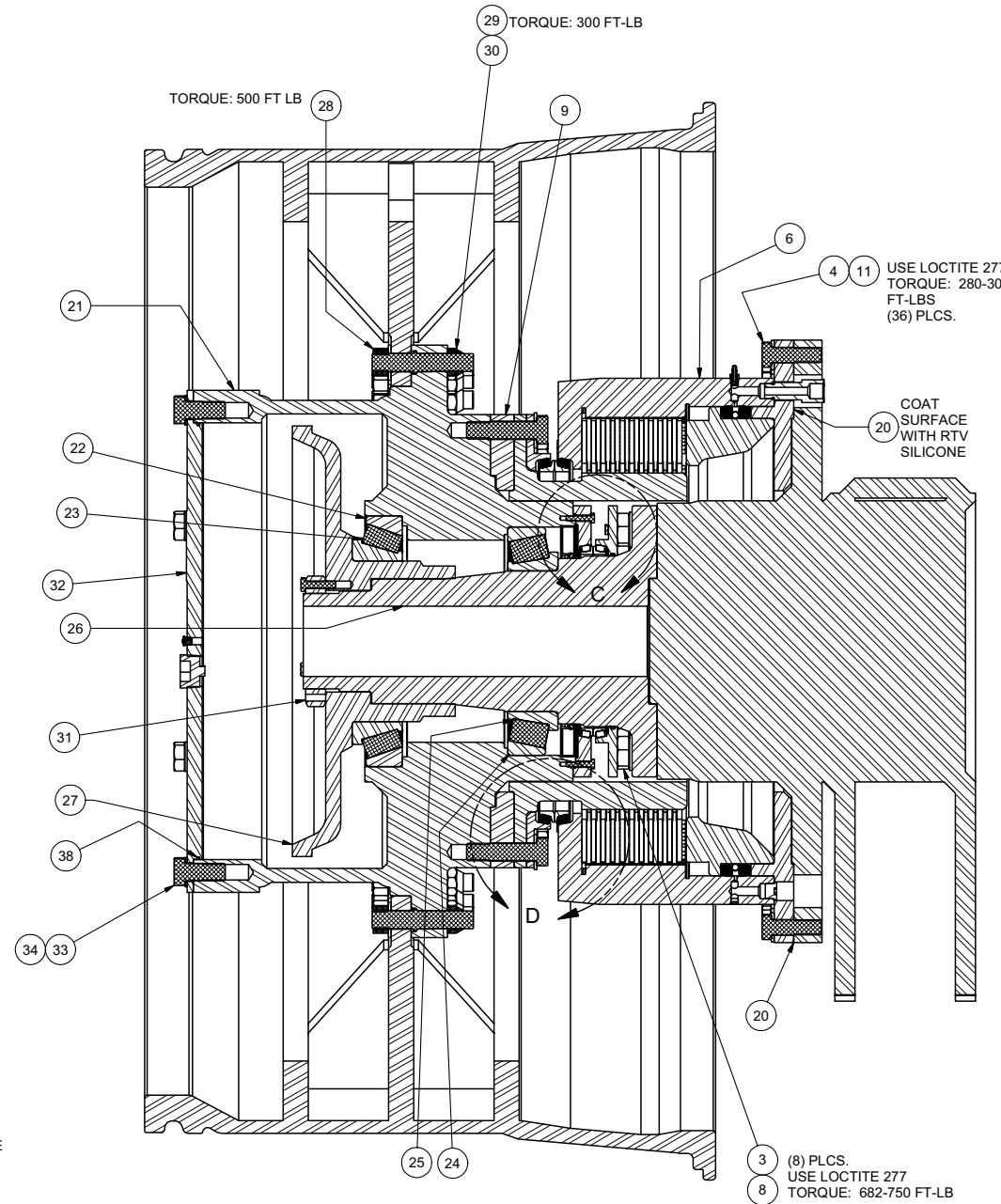
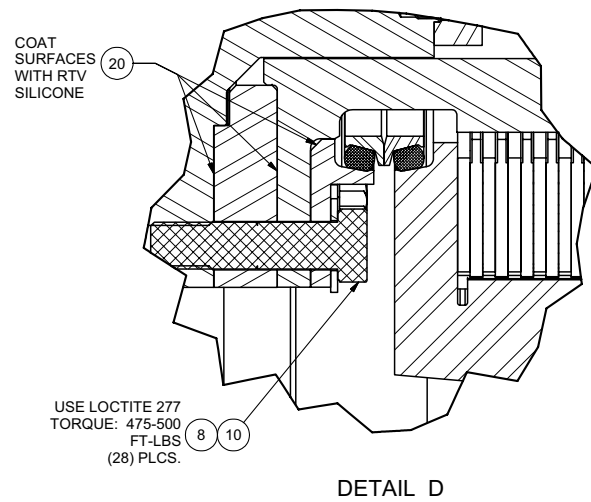
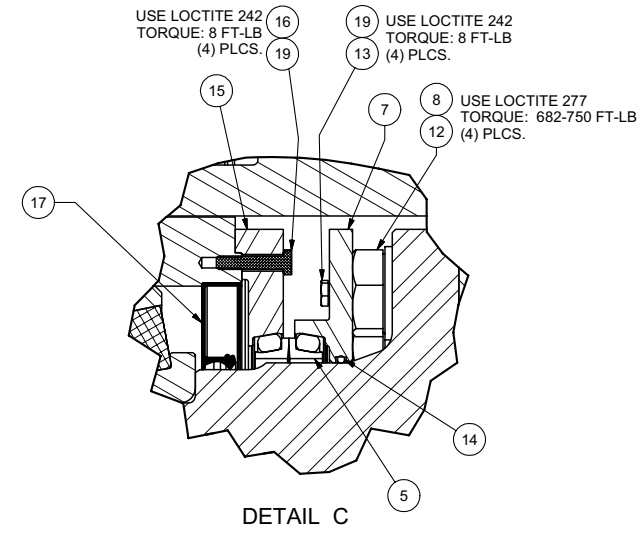
Wet Disc Brake Kit



## Wet Disc Brake Kit

Item	Part No.	Qty	Description	Item	Part No.	Qty	Description
	<b>580170</b>		<b>Wet Disc Brake Kit</b>				
1	580175	2	. Mounting Plate	12	578569	8	. Capscrew
2	580777	1	. Fixture	13	R13810992	8	. Capscrew
3	237928	22	. Capscrew	14	203559	2	. O-Ring
4	230095	84	. Capscrew	15	578274	2	. Plate, Ring
5	245412	2	. Seal, Duo-Cone	16	R13801782	8	. Capscrew
6	* 580171	2	. Brake Assembly	17	216156	2	. Seal, Oil
7	578275	2	. Plating	18	222689	1BTL	. Threadlock, Anaerobic
8	204882	152	. Washer	19	245231	1BTL	. Threadlock, Removable
9	580176	2	. Spacer Plate	20	236308	1CAN	. Silicone, Superflex Ultra Blue
10	00223474	56	. Capscrew				
11	00103346	72	. Washer				

\* See Separate Coverage



**NOTES:**  
WET-DISC BRAKE (ITEM 6) IS SPLIT APART AT THE SEAL RING TO MOUNT THE BRAKE DRIVER AND SPACER PLATE (ITEM 9) TO THE WHEEL HUB. THE BRAKE ASSEMBLY, LESS DRIVER, IS BOLTED TO THE MOUNTING PLATE (ITEM 1). FACE SEAL COMPONENTS ARE SEATED IN PREPARATION FOR FINAL ASSEMBLY. THE COMPLETED STACK OF WHEEL HUB, SPACER PLATE, AND BRAKE DRIVER IS CAREFULLY POSITIONED AND SLID INTO PLACE. ONCE THE INNER BEARING IS SEATED ON THE SPINDLE, THE OUTER BEARING, INTERNAL GEAR HUB (ITEM 27), AND REMAINING COMPONENTS ARE INSTALLED.