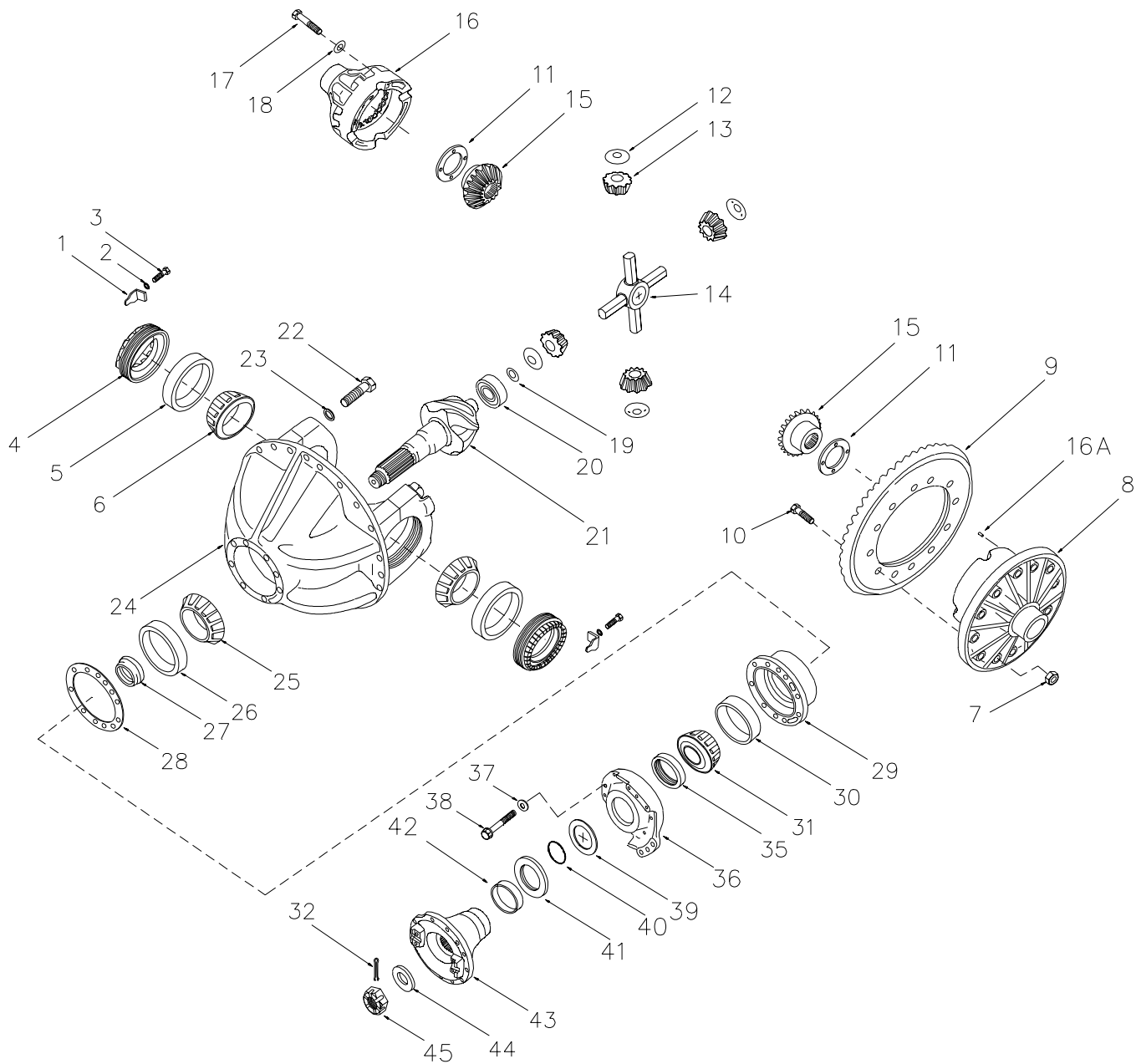

Differential & Carrier



Differential & Carrier

| Item | Part No. | Qty | Description | Item | Part No. | Qty | Description |
|------|---------------|-----|--|------|-----------|-----|---|
| | 580096 | | Differential & Carrier Assembly | | | | |
| 1 | R126468 | 2 | . Lock | 24 | 237735 | 1 | . Carrier & Cap-Inc. Items 22 & 23 |
| 2 | R13800829 | 2 | . Lock Washer | 25 | 201133 | 1 | . Bearing Cone |
| 3 | R13811054 | 2 | . Capscrew | 26 | 201132 | 1 | . Bearing Cap |
| 4 | 217785 | 2 | . Adjusting Nut | 27 | 203240 | 1 | . Kit, Spacer |
| 5 | R672004 | 2 | . Bearing Cup | 28 | 218062 | A/R | . Shim |
| 6 | 201137 | 2 | . Bearing Cone | 28A | 218063 | A/R | . Shim |
| 7 | R13804178 | 12 | . Nut | 29 | 208958 | 1 | . Cage Assembly-Inc. Items 26 & 30 |
| 8 | *b,*c NSS | 1 | . Case Half | 30 | 201130 | 1 | . Bearing Cup |
| 8A | *b,*c 214148 | 2 | . Dowel | 31 | 201129 | 1 | . Bearing Cone |
| 9 | *a NSS | 1 | . Ring Gear | 32 | R13804465 | 1 | . Pin |
| 10 | 214149 | 12 | . Capscrew | 35 | 205724 | 1 | . Oil Seal |
| 11 | *b,*c 208831 | 2 | . Thrust Washer | 36 | 240627 | 1 | . Retainer |
| 12 | *b,*c 208834 | 4 | . Thrust Washer | 37 | 200607 | 8 | . Lockwasher |
| 13 | *c 217570 | 1 | . Pinion Gear | 38 | 217571 | 8 | . Capscrew |
| 14 | *c 208272 | 1 | . Spider | 39 | 238462 | 1 | . Thrust Washer |
| 15 | *c 217784 | 2 | . Side Gear | 40 | 240629 | 1 | . V-Ring Seal |
| 16 | *b,*c NSS | 1 | . Case Half | 41 | 240630 | 1 | . Dust Shield |
| 16A | *b,*c 214148 | 2 | . Dowel | 42 | 218918 | 1 | . Wear Sleeve |
| 17 | *b,*c 200936 | 8 | . Capscrew | 43 | 240628 | 1 | . Flange-Inc. Items 40, 41 & 42 |
| 18 | *b,*c 221707 | 8 | . Washer | 44 | 200988 | 1 | . Washer |
| 19 | 200380 | 1 | . Retaining Ring | 45 | R12974639 | 1 | . Nut |
| 20 | 201144 | 1 | . Bearing | | | | |
| 21 | *a NSS | 1 | . Pinion Gear | | | | *a Included in 229518 Ring & Pinion Assembly |
| 22 | 217782 | 4 | . Capscrew | | | | *b Included in 219340 Case Kit |
| 23 | 208830 | 4 | . Lockwasher | | | | *c Included in 222994 Differential Sub-Assembly |