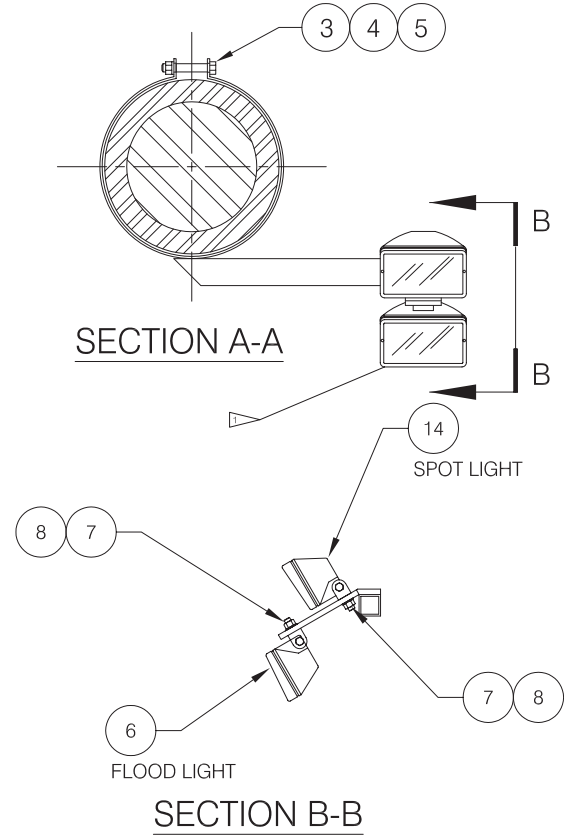
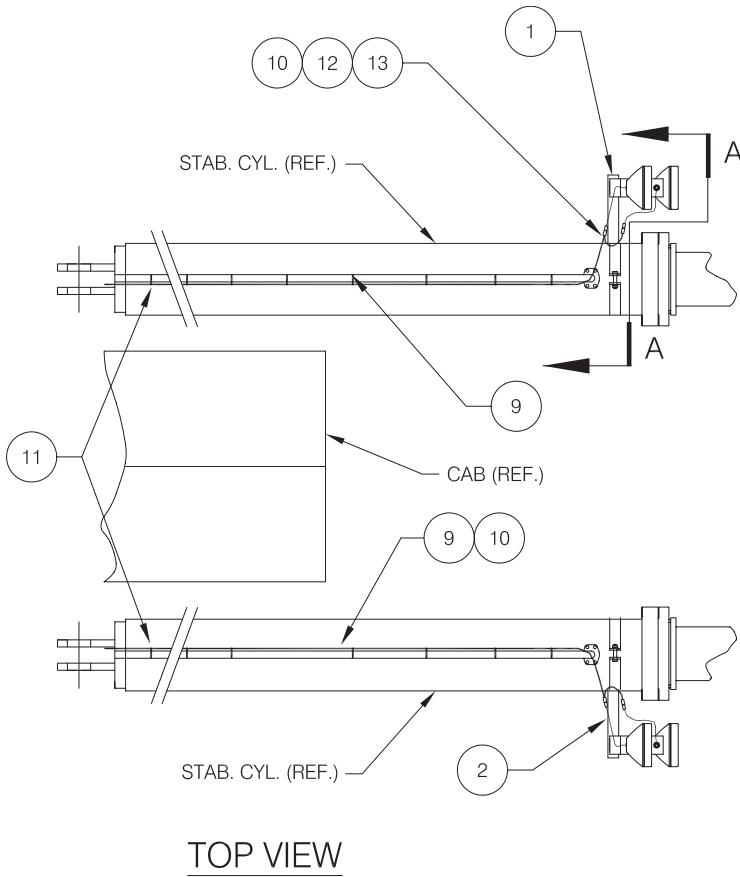


Tilt Cylinder Light Installation



▶ LIGHTS THAT ARE INSTALLED UPSIDE DOWN MUST HAVE THE BULB ASSEMBLY ROTATED 180 DEGREES FOR PROPER BEAM PATTERN & HEAT PROJECTION. SEE INSTRUCTIONS SHEET INCLUDED WITH THE LAMP ASSEMBLY FOR DETAILS.

| Item   | Part No. | Qty | Description                | Item | Part No. | Qty | Description                    |
|--|----------|-----|----------------------------|------|----------|-----|--------------------------------|
| <b>580070 Tilt Cylinder Light Installation</b> |          |     |                            |      |          |     |                                |
| 1  | 560836   | 1   | . Bracket, RH              | 8    | R11499   | 4   | . Locknut                      |
| 2  | 560839   | 1   | . Bracket, LH              | 9    | 220692   | 60' | . Cord, SO                     |
| 3  | 00179891 | 2   | . Capscrew                 | 10   | R740886  | 4   | . Connector, Wire              |
| 4  | 223587   | 2   | . Nut, Esna                | 11   | 223872   | 32  | . Tie Strap                    |
| 5  | 222615   | 2   | . Flat Washer              | 12   | R740874  | 8   | . Pin, Female                  |
| 6  | 249288   | 2   | . Lamp Assembly, Hid Flood | 13   | R740867  | 8   | . Seal, Wire                   |
| 7  | 223427   | 4   | . Flat Washer              | 14   | 249338   | 2   | . Lamp Assembly, Hid Trapezoid |