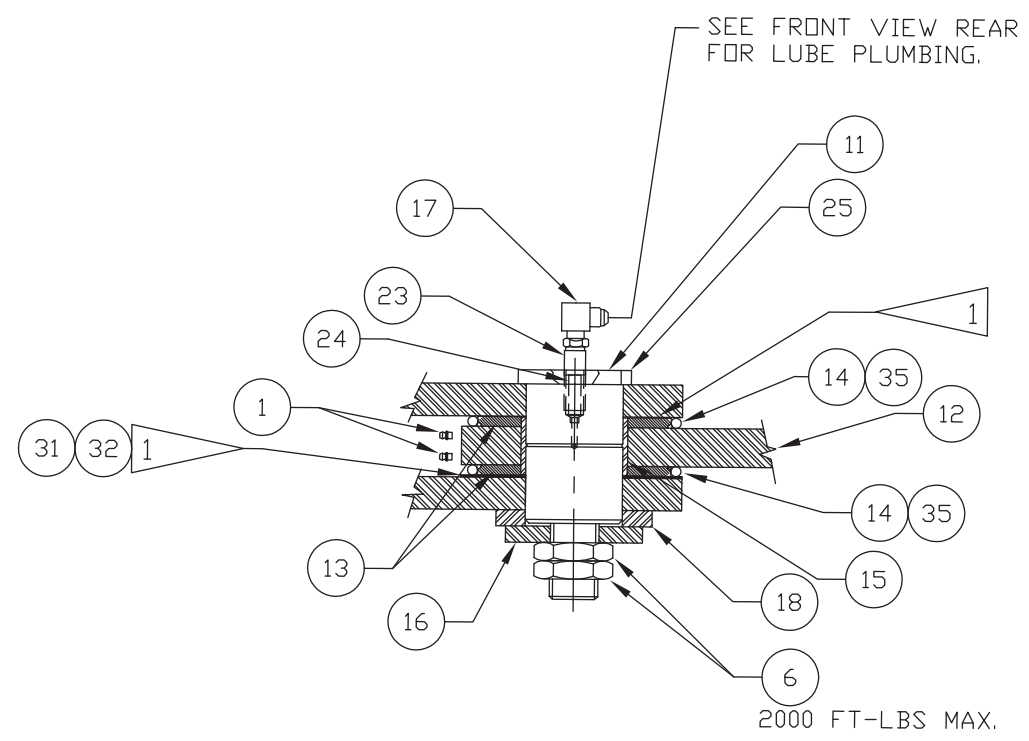
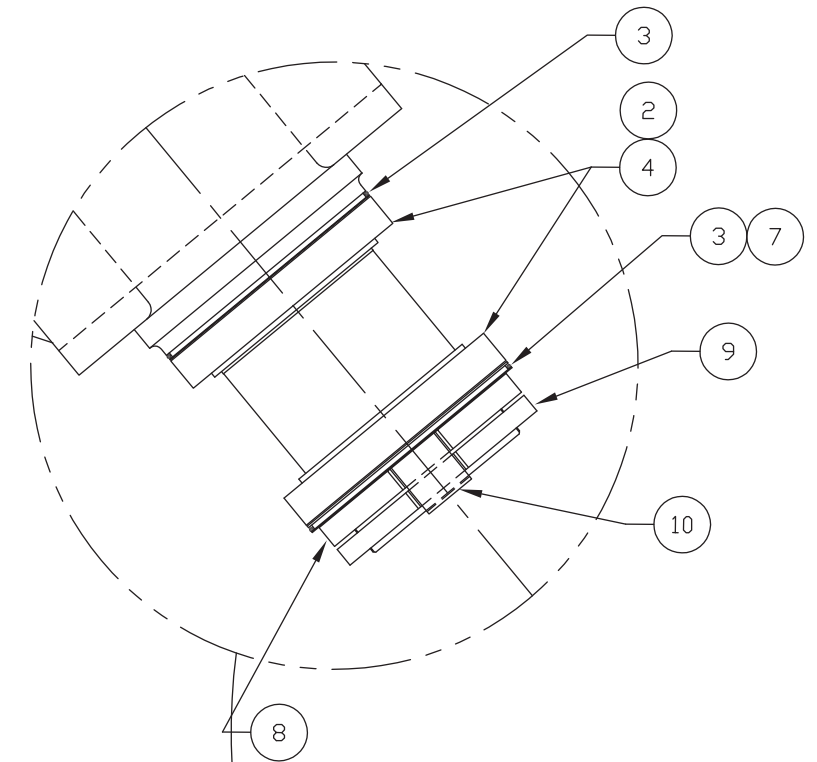
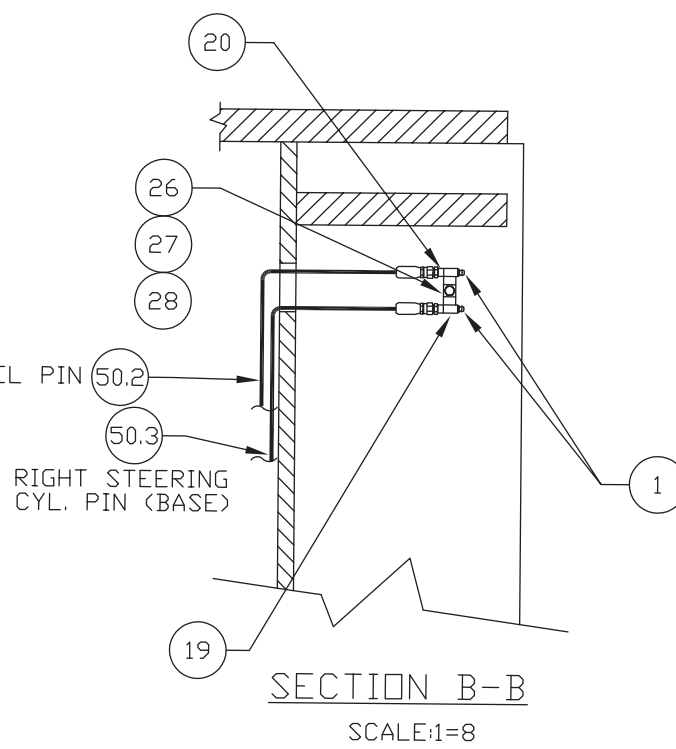
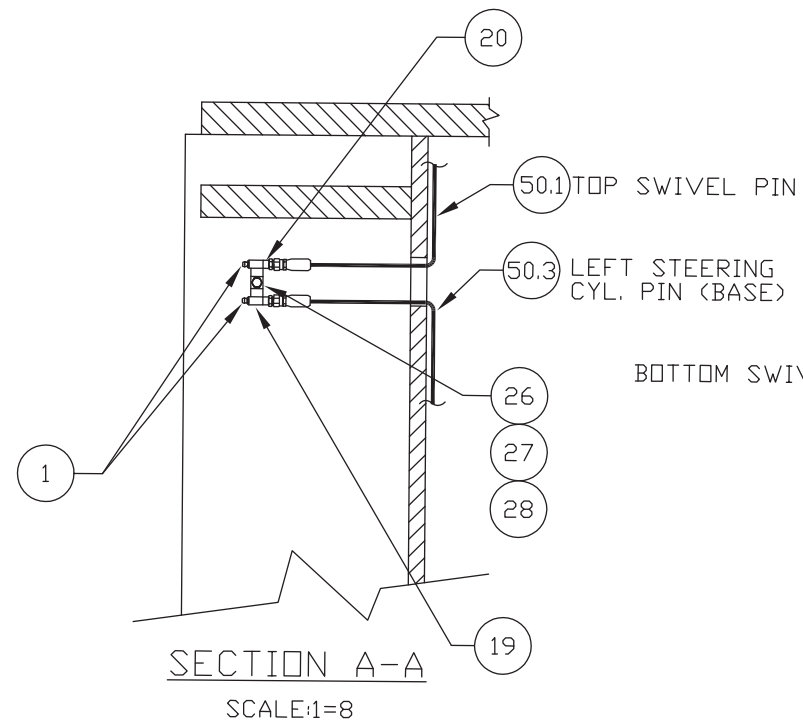

Swivel Box Installation

Swivel Box Installation

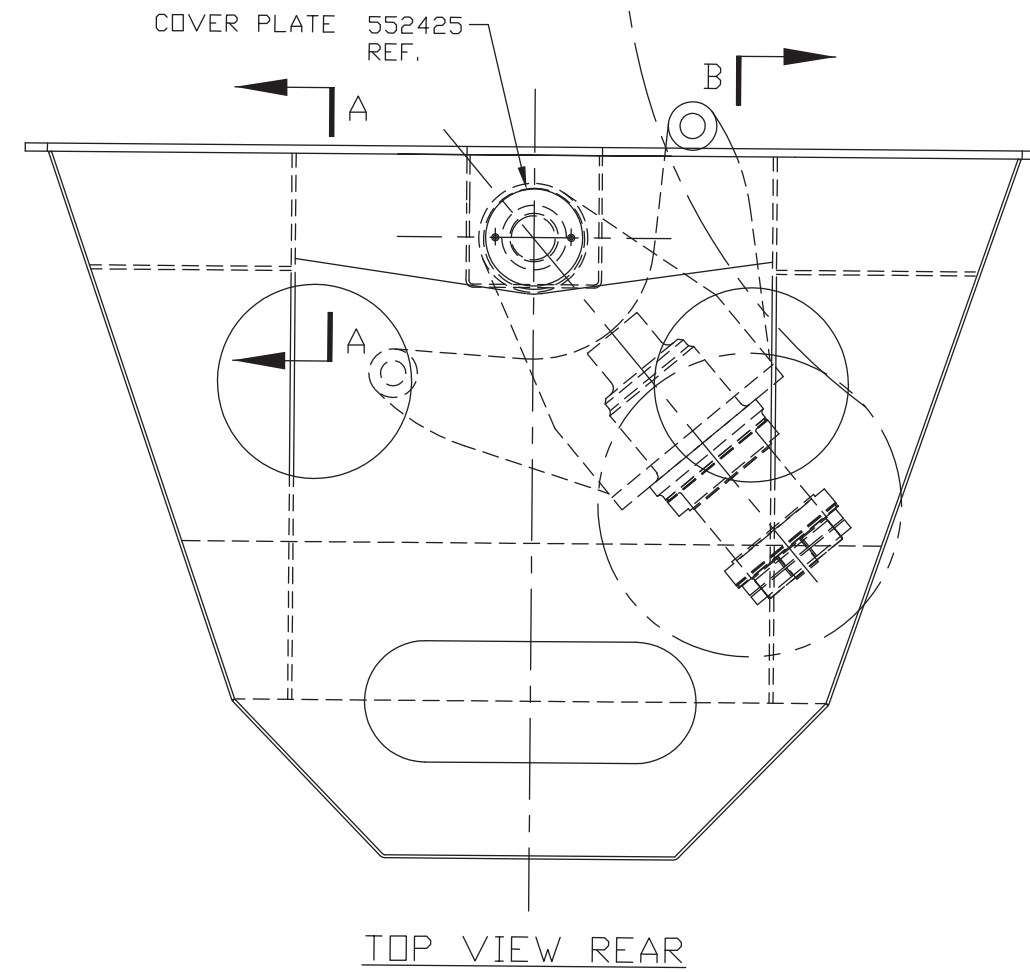
Item	Part No.	Qty	Description	Item	Part No.	Qty	Description
	580058		Swivel Box Installation				
1	00191758	16	. Fitting, Lube	19	508790	4	. Bracket Assembly
2	* 200219	2	. Bearing Cone	20	209750	12	. Fitting
3	* 203506	2	. O-Ring	22	209588	24	. Clip, Insulated
4	* 204605	2	. Bearing Cup	23	00105408	4	. Coupling, Pipe
6	219928	4	. Jam Nut	24	00114794	2	. Nipple, Pipe
7	501873	1	. Plate, Oil Seal	25	500243	2	. Bar, Spacer
8	539434	1	. Nut	26	221314	24	. Stud, Weld
9	501874	1	. Nut	27	230282	24	. Washer
10	534398	1	. Plate, Lock	28	223654	24	. Locknut
11	566851	2	. Pin	31	564412	2	. Shim
12	** 580059	1	. Swivel Box Assembly	32	564413	2	. Shim
13	580156	4	. Washer, Thrust	34	565020	4	. Manifold, Lube
14	* 550329	4	. Seal, Dirt	35	* 203498	4	. O-Ring
15	563163	2	. Bushing	50	596086	1	. Kit, Hose
16	556712	2	. Washer	50.1	233887	1	. . Hose Assembly
17	209405	12	. Fitting	50.2	220373	1	. . Hose Assembly
18	566850	2	. Washer	50.3	233001	2	. . Hose Assembly
				50.4	214102	8	. . Hose Assembly

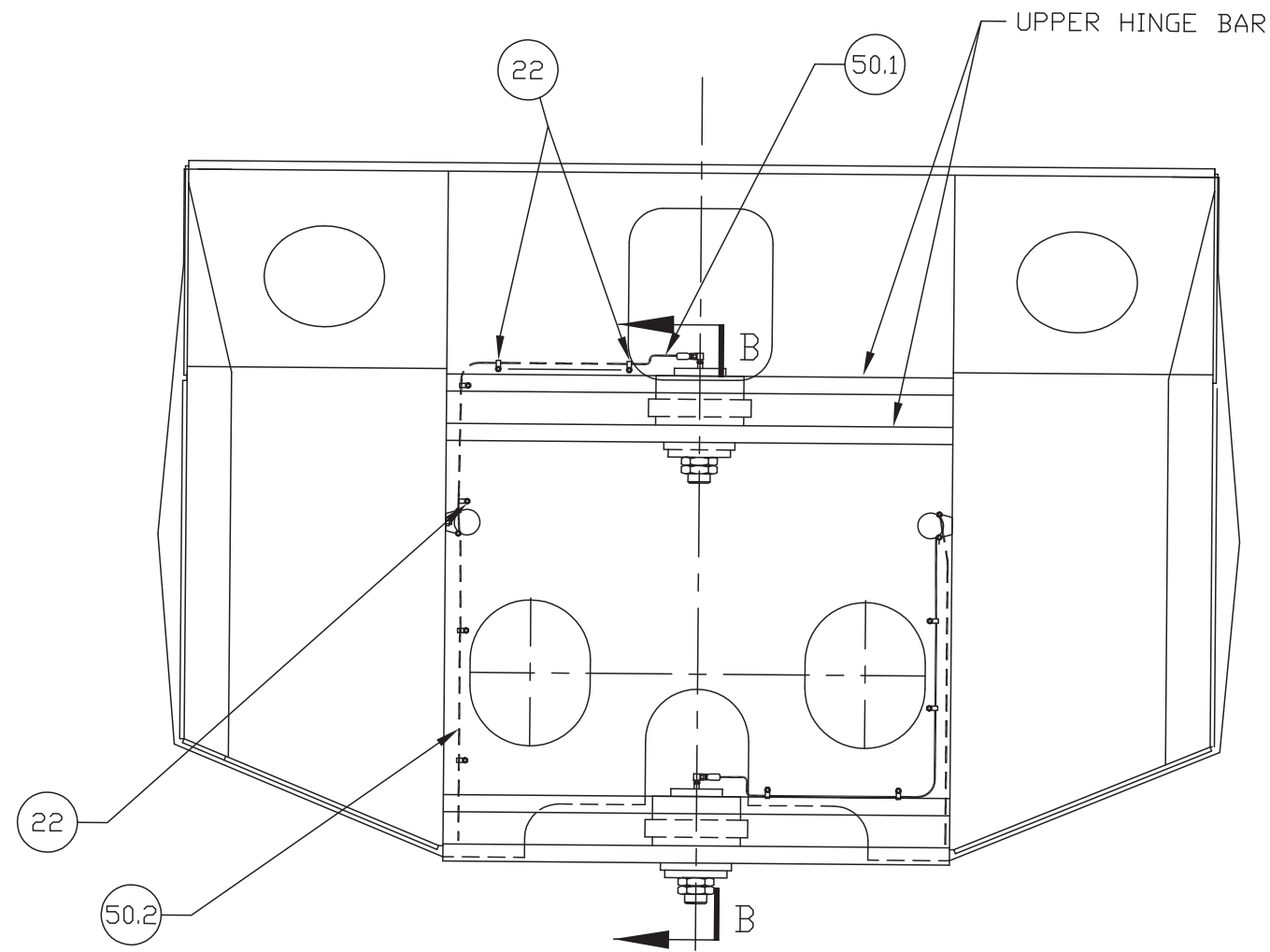
* Included in Service Kit 586131

** See Separate Coverage

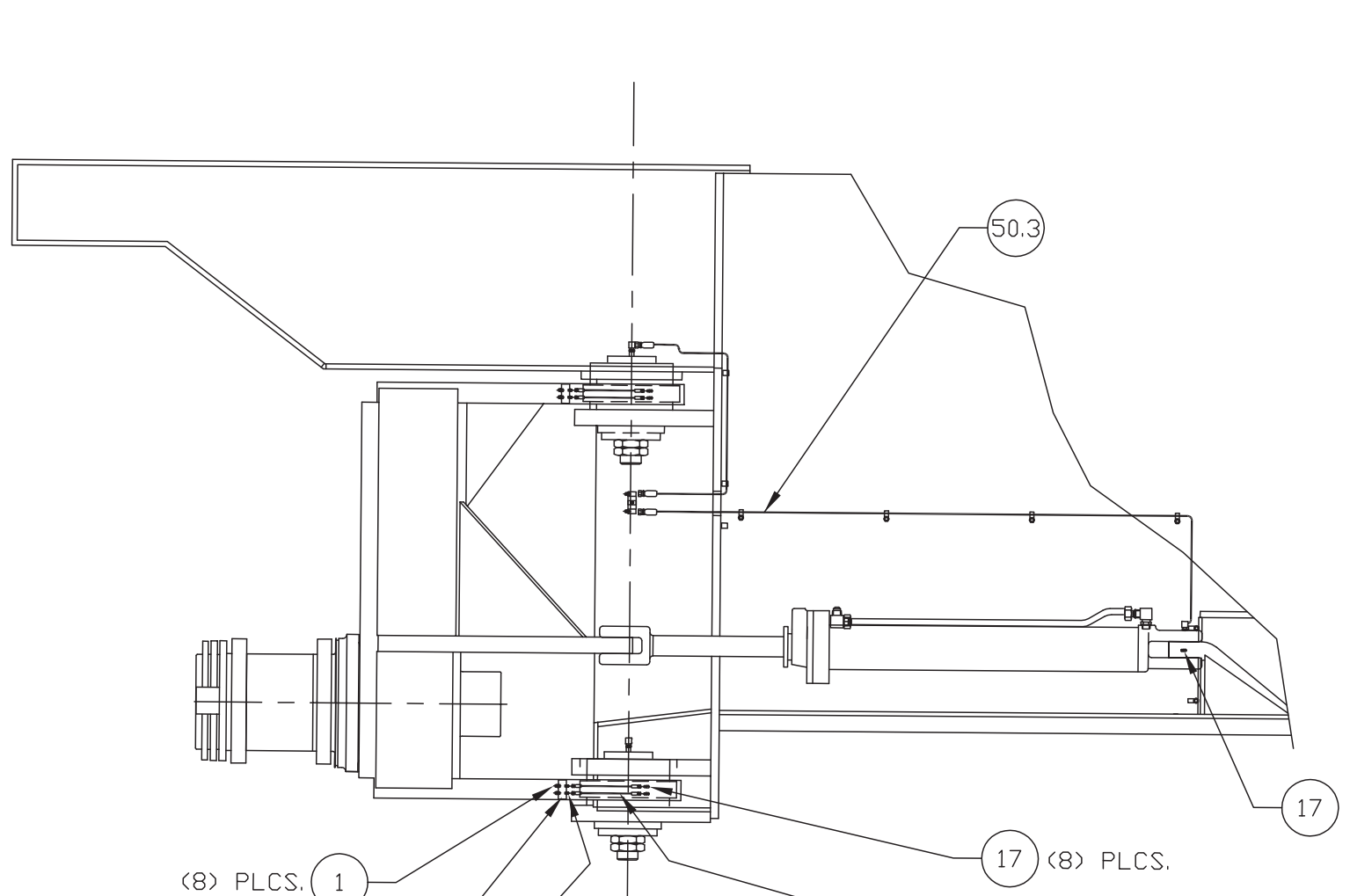


PIN ASSEMBLY
CROSS SECTION
1" = 8"





FRONT VIEW REAR



- (8) PLCS. 1
- (4) PLCS. 34
- (8) PLCS. 20
- 17 (8) PLCS.
- 50.4 (8) PLCS.

SECTION B-B

LUBE LINE FOR STEERING CYL.
TYPICAL FOR BOTH SIDES.

1 SHIM IF REQUIRED WITH
P/N 564412 OR P/N 564413
SO THAT CLEARANCE DOES
NOT EXCEED 1/16 OF AN INCH.
TACK WELD SHIMS IN PLACE.