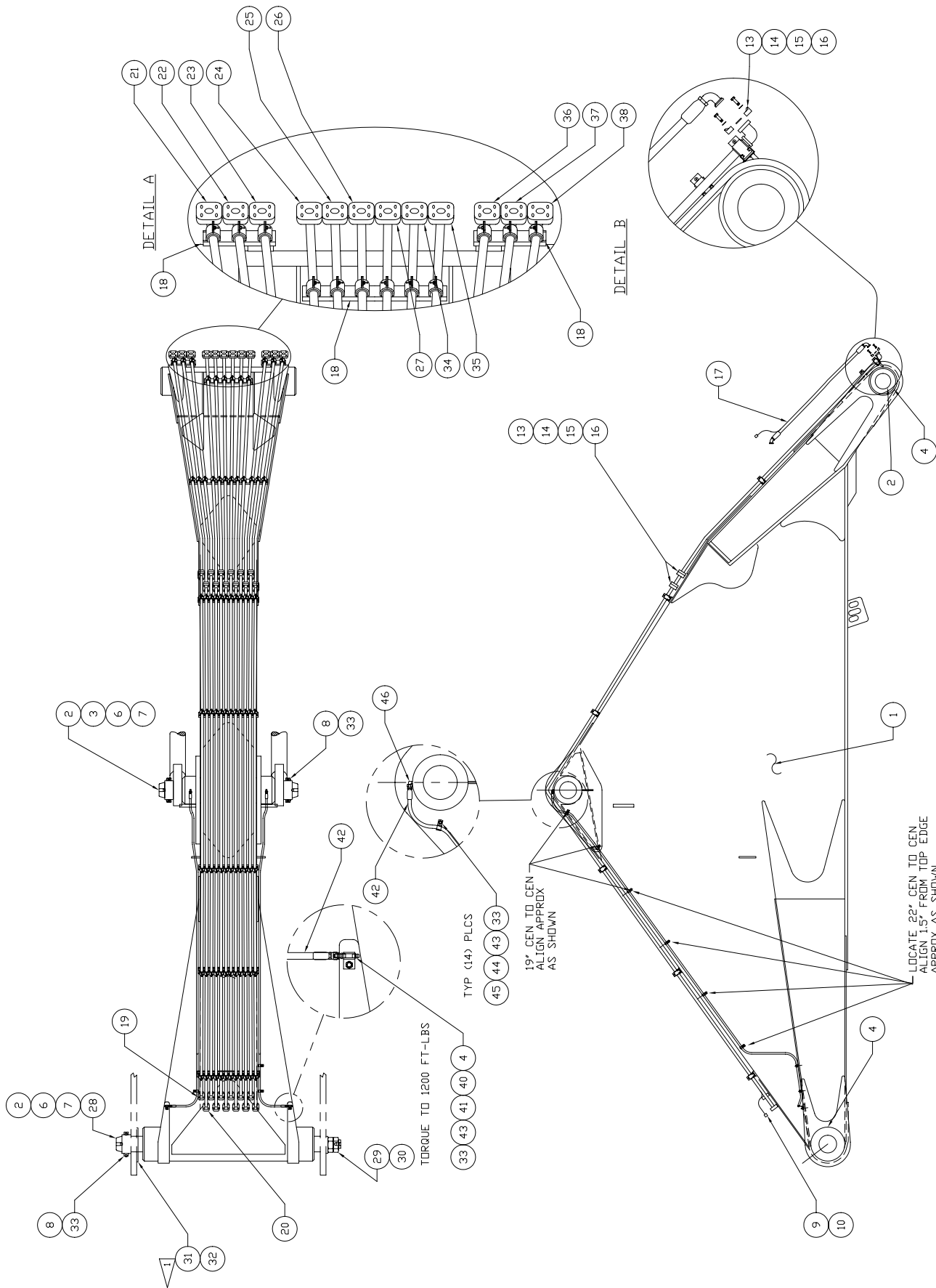


---

Boom Assembly



LOCATE 22" CEN TO CEN  
ALIGN 1.5" FROM TOP EDGE  
APPROX AS SHOWN  
BOTH SIDES

SHIM BOOM TO ELIMINATE MOVEMENT GREATER  
THAN 1/8". USE ITEMS 31 & 32 AS REQUIRED.

## Boom Assembly

Item	Part No.	Qty	Description	Item	Part No.	Qty	Description
	<b>580057</b>		<b>Boom Assembly</b>				
1	580027	1	. Boom Weldment	25	570382	1	. Tube
2	561170	6	. Bushing	26	570383	1	. Tube
3	561306	1	. Pin	27	570384	1	. Tube
4	00191758	6	. Fitting, Lube	28	561518	1	. Pin
6	563243	3	. Lock Collar	29	561846	1	. Washer
7	563280	3	. Pin	30	219928	2	. Jam Nut
8	223374	6	. Capscrew	31	564014	2	. Shim
9	552961	1	. Wire Harness	32	564023	2	. Shim
10	213257	40	. Tie Strap	33	223654	24	. Nut, Esna
13	209535	48	. Clamp Half	34	570385	1	. Tube
14	203443	24	. O-Ring	35	570386	1	. Tube
15	202201	96	. Capscrew	36	570387	1	. Tube
16	201567	96	. Lockwasher	37	570388	1	. Tube
17	245007	12	. Hose Assembly	38	570389	1	. Tube
18	231250	84	. Clamp	40	209750	2	. Fitting
19	570376	6	. Tube	41	508790	2	. Bracket Assembly
20	570377	6	. Tube	42	233718	2	. Hose Assembly
21	570378	1	. Tube	43	222297	18	. Stud, Weld
22	570379	1	. Tube	44	209588	16	. Clamp
23	570380	1	. Tube	45	230282	16	. Flat Washer
24	570381	1	. Tube	46	209405	2	. Fitting