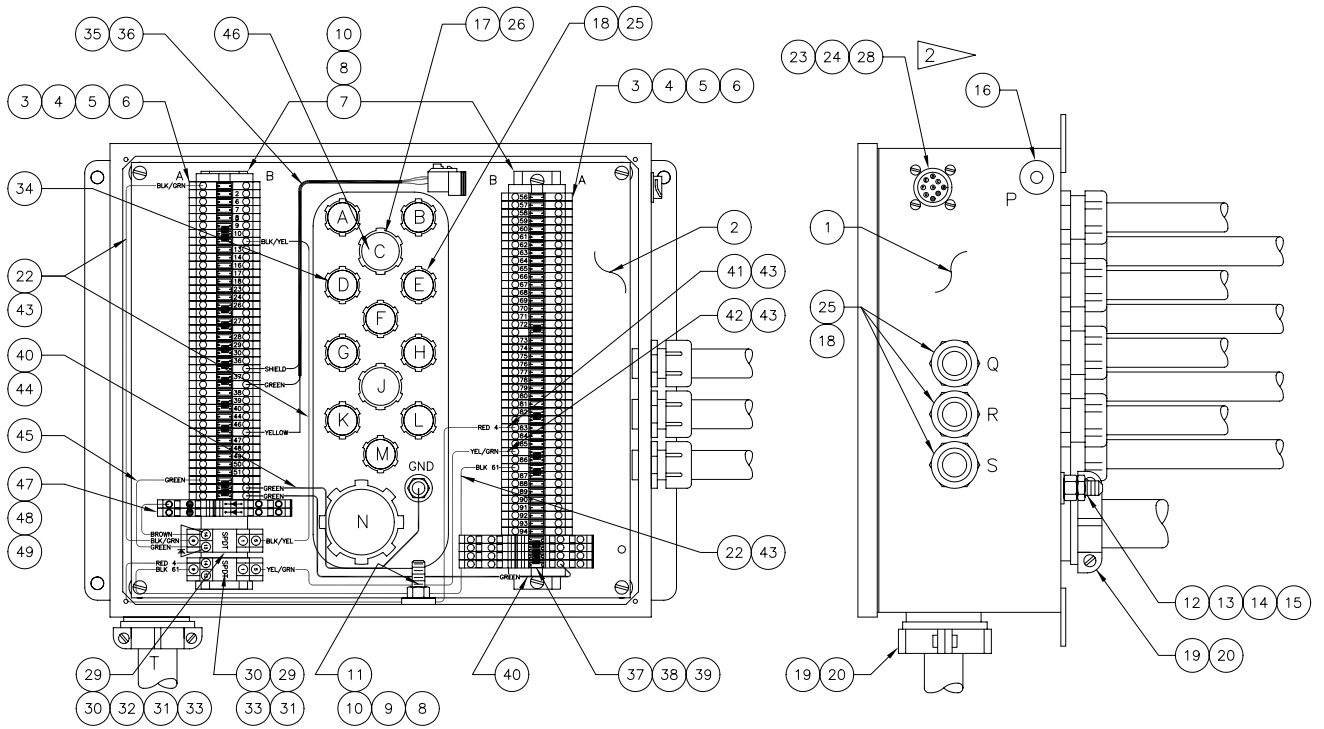


Junction Box Assembly



2 SEE ANSI WIRING SCHEMATIC FOR CONNECTION OF ITEM 23 TO WAGO TERMINAL BLOCKS.

Item	Part No.	Qty	Description	Item	Part No.	Qty	Description
	579839		Junction Box Assembly				
1	578969	1	. Box, Elec	26	220579	2	. Connector, Cord
2	578372	1	. Panel	27	29104	1	. Connector, Cord
3	236924	85	. Terminal Block	28	241831	4	. Nut, Esna
4	236925	2	. End Plate	29	238891	2	. Relay
5	236926	13	. Jumper, Horizontal	30	22632	2	. Relay Socket
6	241761	4	. End Stop	31	22639	2	. Spring, Holddown
7	22628	1MT	. Rail, Din	32	22635	1	. Diode
8	00100768	8	. Machine Screw	33	235842	4	. Clamp, Holddown
9	223799	2	. Nut, Esna	34	579427	1	. Wire Harness
10	00103338	8	. Flat Washer	35	579509	1	. Wire Harness, Short
11	562702	1	. Terminal Block	36	247975	1	. Receptacle
12	559513	1	. Rod	37	241757	4	. Terminal Block
13	223654	2	. Nut, Esna	38	241762	1	. End Plate
14	235708	2	. Jam Nut	39	241759	3	. Jumper
15	201570	2	. Spring Washer	40	219433	2'	. Wire
16	R3221996	1	. Grommet	41	219437	2'	. Wire
17	220057	2	. Ring Nut	42	219388	2'	. Wire
18	220582	13	. Ring Nut	43	189-0076	6	. Terminal Lug
19	226049	2	. Connector, Cord	44	200250	1	. Terminal Ring
20	226157	2	. Ring Nut	45	237628	1'	. Wire
21	11463	40'	. Cord, So	46	579739	1	. Wire Harness
22	219436	4'	. Wire	47	247209	2	. Terminal Block
23	578970	1	. Wire Harness, Diagnostic	48	247468	1	. End Plate
24	241827	4	. Machine Screw	49	241771	1	. Jumper
25	220577	13	. Connector, Cord				